



Installation Instructions

REV 3 01/08/2020

Part No. **1011**

Product: Running Boards

Application:

Audi Q7 2004-2015

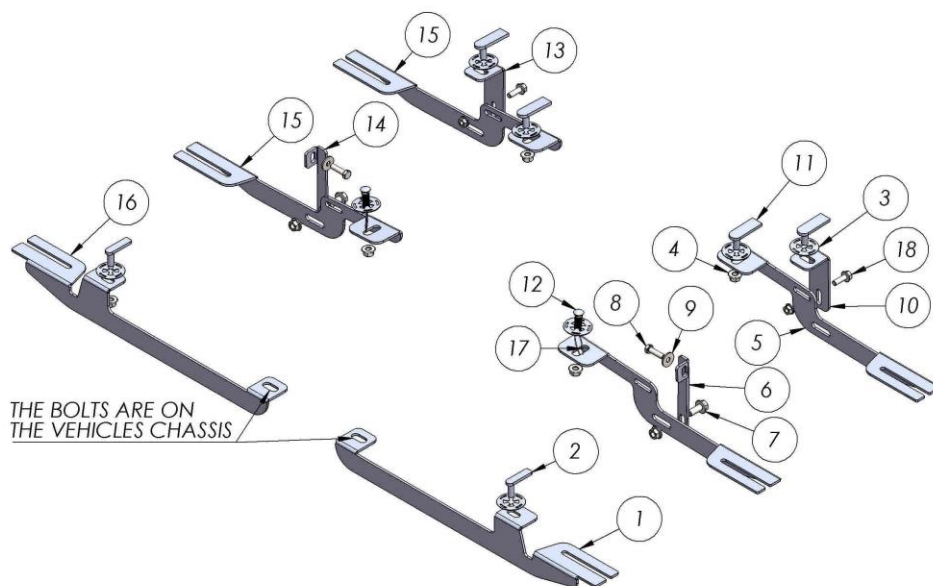
Level of Difficulty: 1 2 **3** 4 5

Installation Time: 90 Min

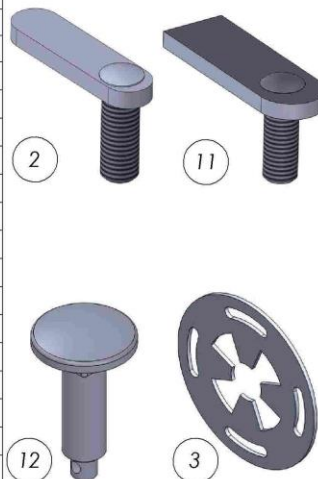
Hardware	Torque Specifications
M6 Bolt	3 ft-lbs.
M8 Bolt	7 ft-lbs.
M10 Bolt	16 ft-lbs.
M12 Bolt	28 ft-lbs.

ATTENTION: Use correct torque settings to avoid damaging the running boards and or mounting brackets. Failure to do so will void your warranty.

If you have any questions please contact our technical team at 1-866-717-6645



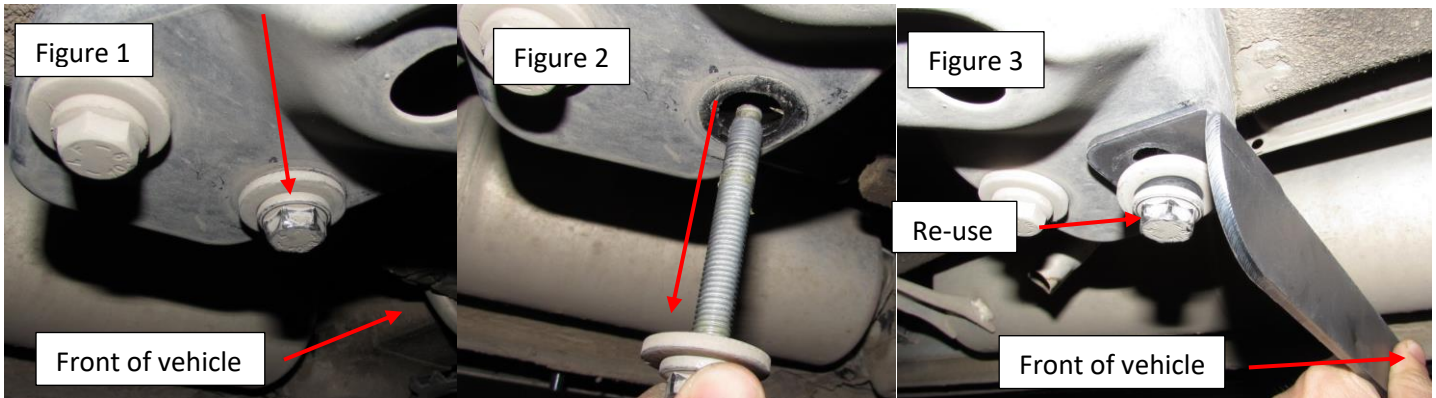
ITEM/NO	PART NUMBER	QTY
1	1011850F0 DRIVER	1
2	HTC 243 - M10x25	2
3	HTC 269 - KLIPS (M10)	8
4	DIN 6923 FLANGE NUT M10	8
5	1011850B0C0 DRIVER	2
6	1011850C1 DRIVER	1
7	DIN 6921 FLANGE BOLT M10 x 25	2
8	DIN933 BOLT - M8 x 30	2
9	DIN125 WASHER - M8	2
10	1011850B1 DRIVER	1
11	HTC 230 - M10x25	4
12	HTC 274 (M10 x 35)	2
13	1011850B1 PASSENGER	1
14	1011850C1 PASSENGER	1
15	1011850BC0 PASSENGER	2
16	1011850F0 PASSENGER	1
17	WIRE	2
18	DIN 6921 FLANGE BOLT - M8 x 25	2
19	DIN 6923 FLANGE NUT - M8	2



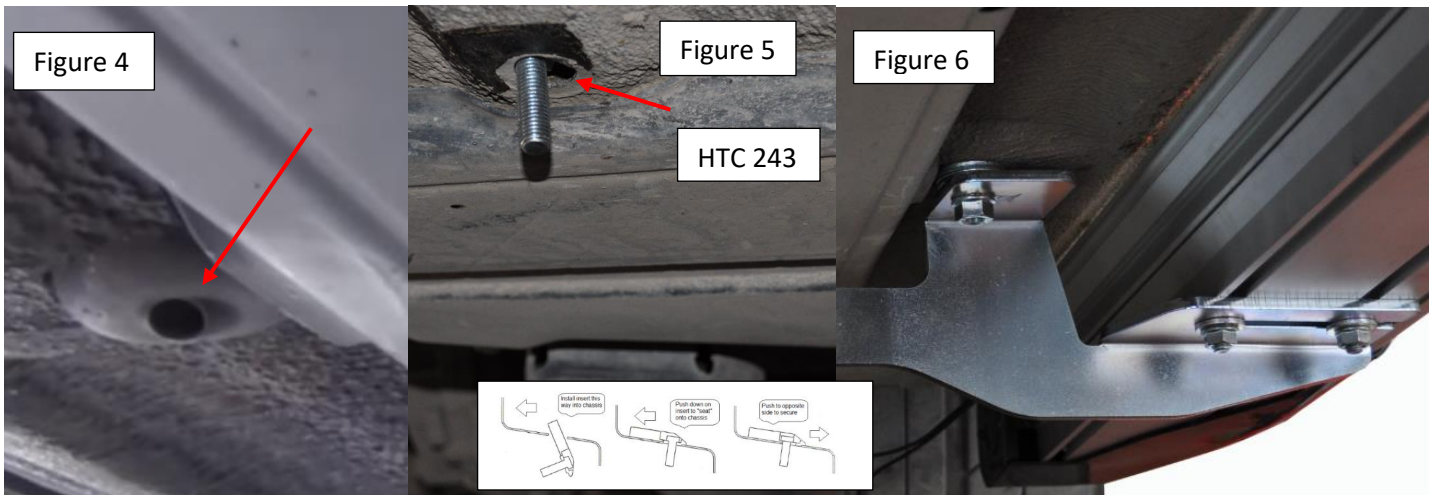


Step 1: Locate front mounting locations and hardware as per 1st page of this installation manual

Step 2: Remove factory crossmember bolt as shown on Figure 1, do not discard as it is re-used Figure 2. Install front mounting bracket as shown on Figure 3



Step 3: Locate outer front mounting points Figure 4 remove rubber plug. Install HTC 243 as shown on Figure 5 install front bracket as shown on Figure 6. Do not tighten



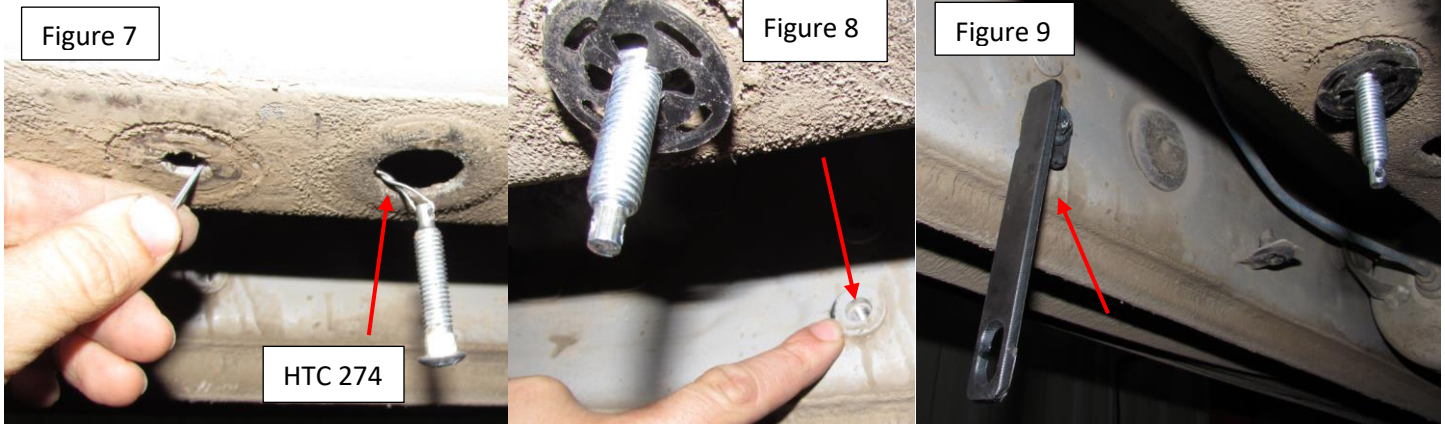
Step 4: Proceed to middle bracket

Installation Instructions 1011 Audi Q7 2004-2015

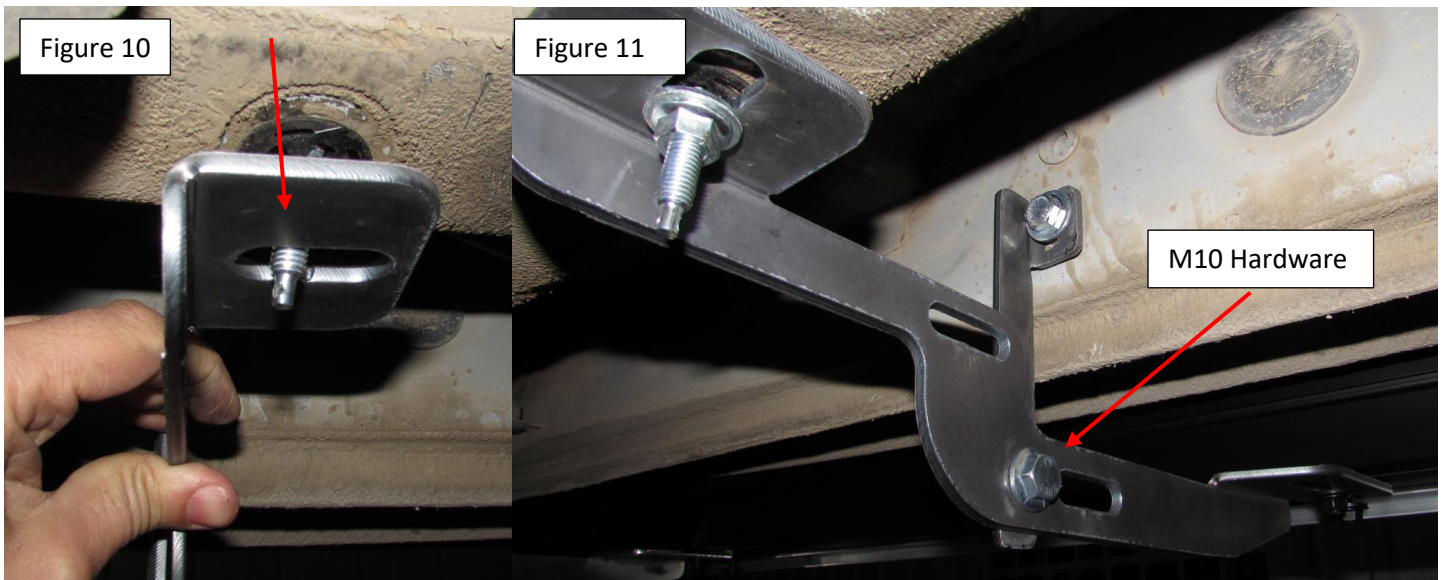
Step 5: Locate middle bracket location and hardware

Step 6: Install supplied M10 carriage bolt HTC 274 with HTC 269 as shown on Figure 7. Note you may have to remove rubber plug on some models.

Step 7: Locate extra support mounting point Figure 8, Install extra support as shown Figure 9



Step 8: Install middle bracket as shown on Figure 10, attach main bracket to extra support with provided M10 hardware as shown on figure 11 do not tighten.

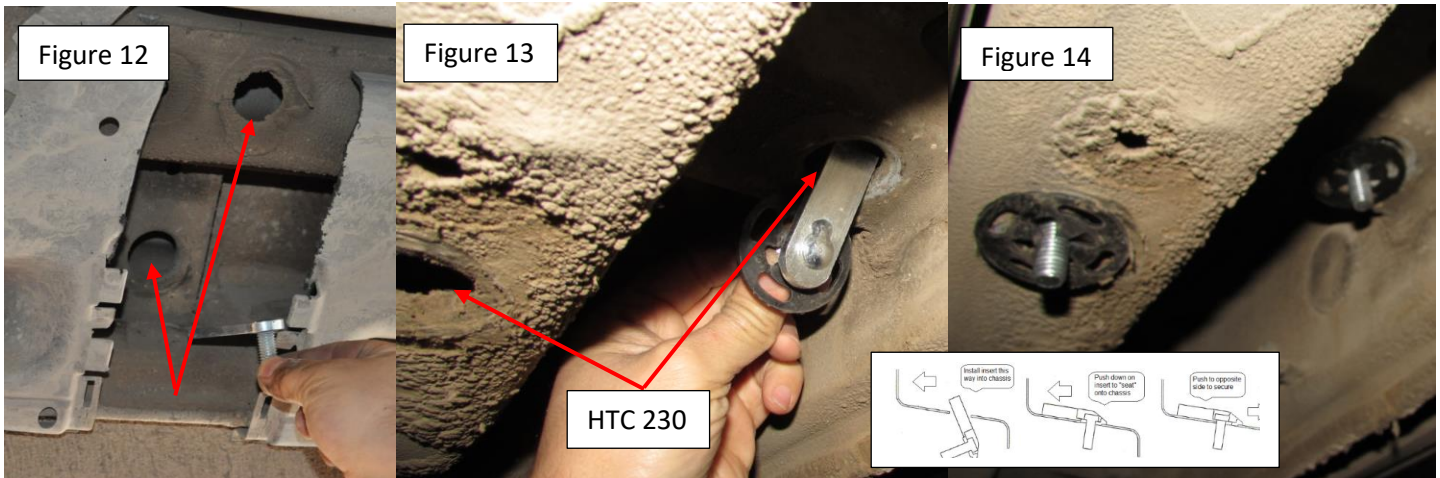


Step 9: Proceed to rear bracket.

Installation Instructions 1011 Audi Q7 2004-2015

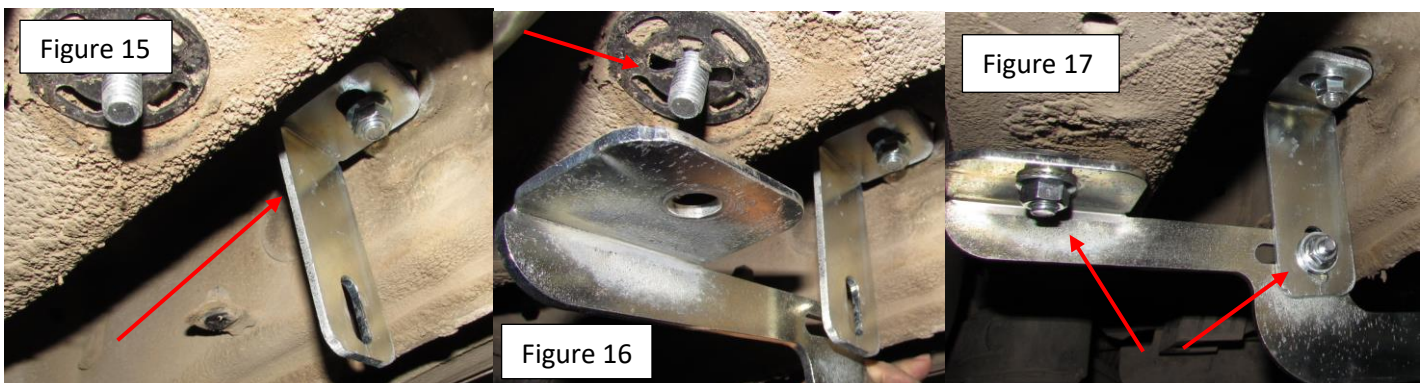
Step 10: Locate rear mounting area, Note you may have to remove a part of the plastic shield Figure 12

Step 11: Insert HTC 230 with HTC 269 as shown on Figure 13 and Figure 14.



Step 12: Install rear bracket extra support as shown on Figure 15 do not tighten.

Step 13: Install rear main bracket and attach to extra support as shown on Figure 16 and Figure 17. Do not tighten.



Step 14: Loosen M8 hardware on back of the running boards (see last page) and install onto brackets.

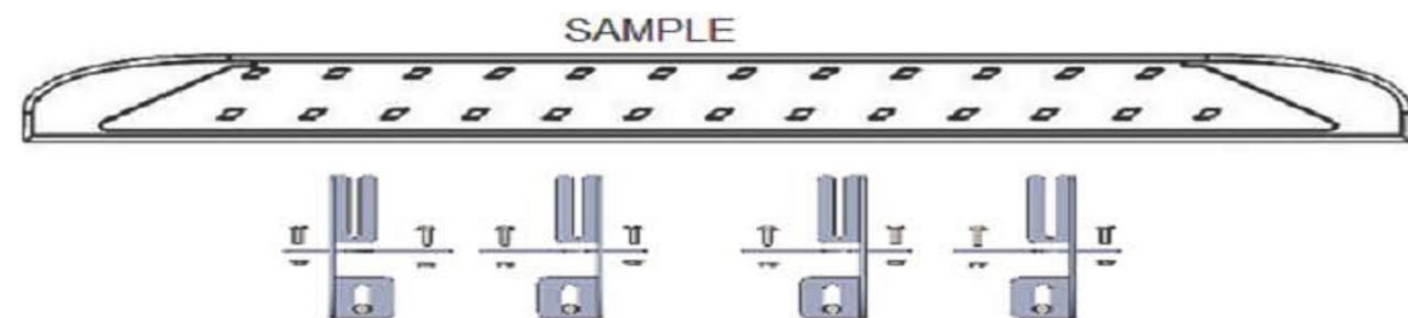
Step 15: Repeat procedure on opposite side

Step 16: Proceed to last page of this manual for running board install instructions and torque values

For Technicall support please call our team at 1-866-717-6645 and one of our experts will assist you with this installation

Thank you for choosing Romik.

Running Board Installation Instructions



RAL / RB2 / REC / RCV / RZR



ROB / ROF / RPD

- 1) Flip your Romik running boards onto a flat surface, make sure to place the running boards on a towel or cardboard in order to protect the surface Figure 1.
- 2) Loosen the M8 bolts on back of your running boards Figure 2. Depending on your model there will be either 6 or 8 bolts installed per side.
- 3) Once your brackets have been installed, place the running board onto the brackets as shown on Figure 3.
- 4) Adjust running boards, centering on vehicle. Hand tight M8 hardware on running boards.
- 5) Follow the torque procedures, torque M8 hardware to **7 ft-lbs** using a torque wrench.
- 6) Cleaning and maintaining your running boards is important, apply a light coat of a quality carnauba wax at least 2X per year. Wash often with mild soap and make sure to remove all soap residue. Many car automatic carwashes use a strong soap, make sure to use enough water to remove all residue.
- 7) Register your products at www.Romik.com/contact/productregistration
- 8) Warranty information at www.Romik.com/warranty