



## Installation Instructions

REV 3 01/08/2020

Part No. **1013**

Product: Running Boards

Application:

**Audi Q3 2014 - 2018**

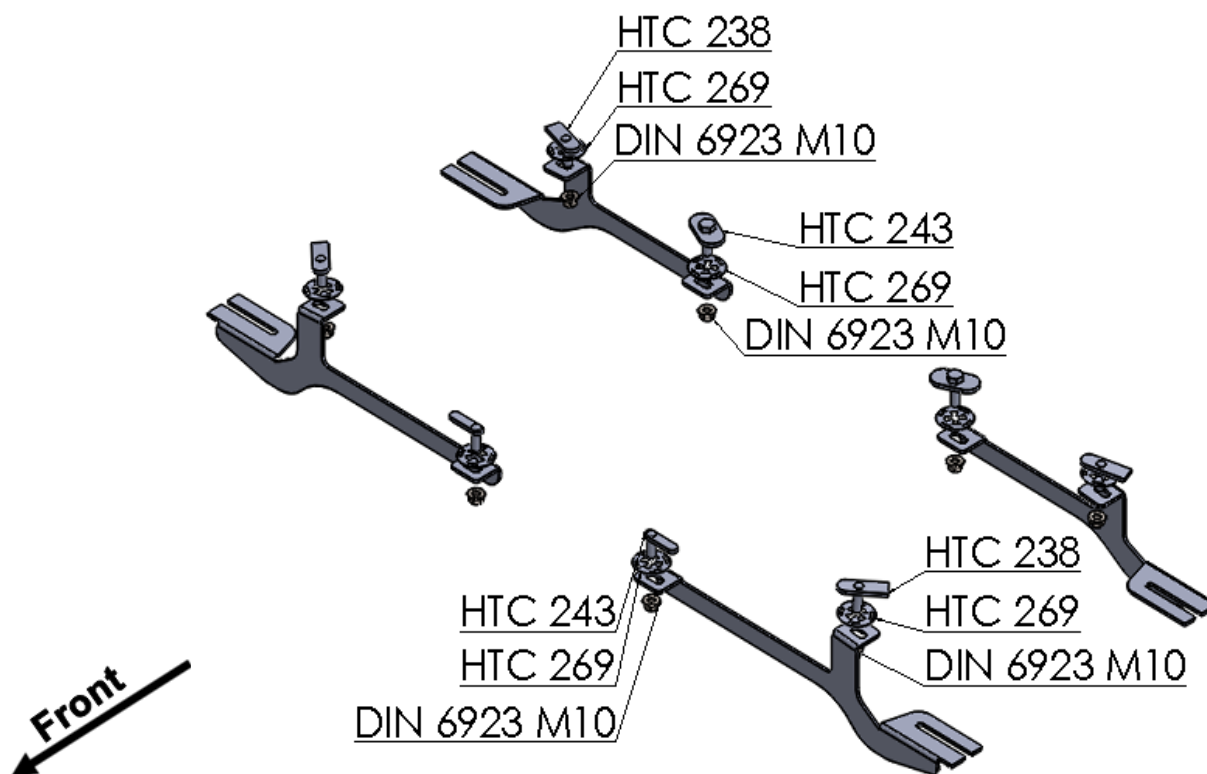
Level of Difficulty: 1 **2** 3 4 5

Installation Time: 90 Min

Hardware	Torque Specifications
M6 Bolt	3 ft-lbs.
M8 Bolt	7 ft-lbs.
M10 Bolt	16 ft-lbs.
M12 Bolt	28 ft-lbs.

**ATTENTION:** Use correct torque settings to avoid damaging the running boards and or mounting brackets. Failure to do so will void your warranty.

If you have any questions please contact our technical team at 1-866-717-6645

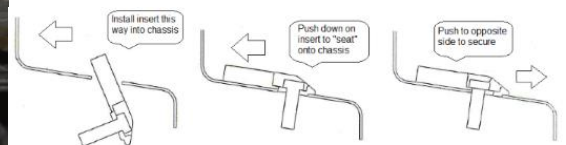


Item	Part Number	QT	Image
1	HTC 238 M10x30 (4x20x60)	4	
2	HTC 240 M10x30 (5x34x60)	2	
3	HTC 243 M10x25 (5x13x50)	2	
4	HTC 269 Klips (M10)	8	
5	M10 Flange Nut DIN 6923	8	

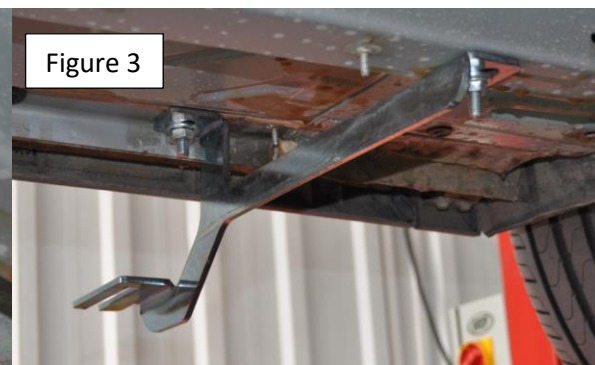
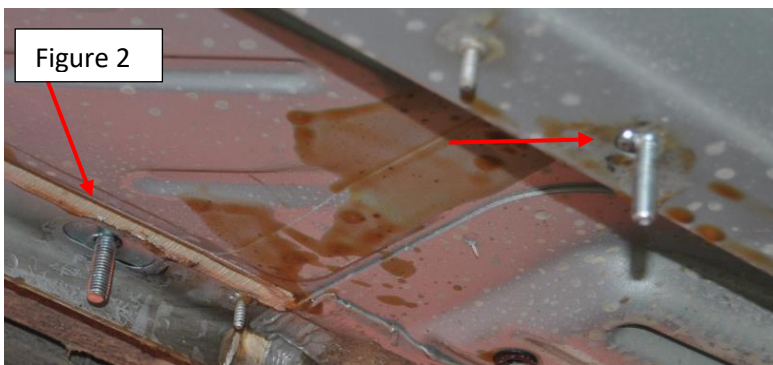
# Installation Instructions 1013 Audi Q3 2018 - 2018

**Step 1:** Remove plastic undercarriage panels, note panels will need trimming to allow access to brackets.

**Step 2:** Locate mounting points as shown on Figure 1 install HTC 243 and HTC 238 as shown below.

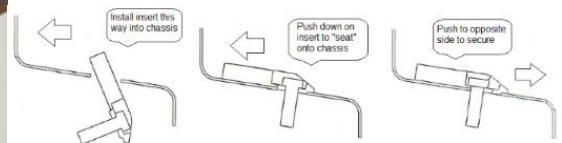


**Step 3:** Install front brackets as shown on Figure 2 and Figure 3. Do not tighten bracket hardware



**Step 4:** Proceed to rear bracket mounting area.

**Step 5:** Locate rear mounting holes Figure 4 install HTC 240 and HTC 238 as shown below



# Installation Instructions 1013 Audi Q3 2018 - 2018

Step 6: Install rear bracket as shown on Figure 5 and Figure 6 Do not tighten bracket hardware



Step 7: Loosen M8 hardware on back of the running boards (see last page) and install onto Brackets.

Step 8: Reinstall plastic panels and trim as necessary as shown on Figure 7.



Step 9: Repeat procedure on opposite side.

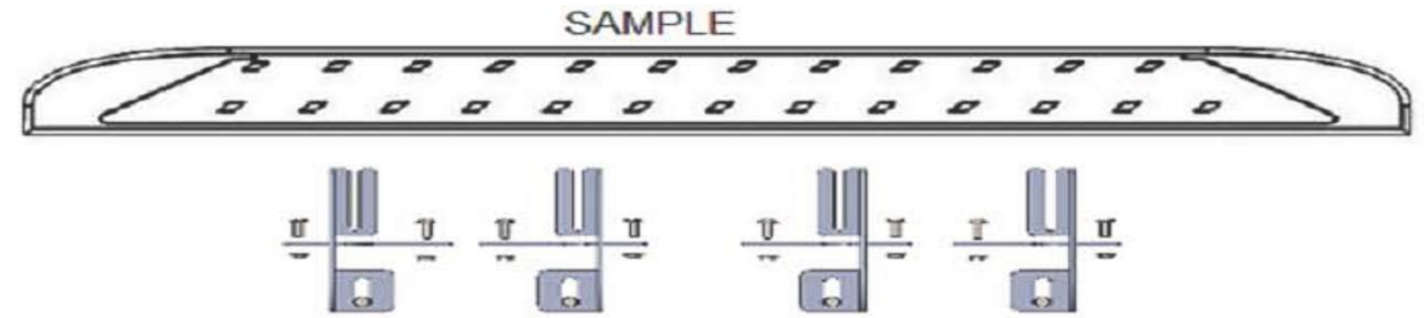
Step 10: Proceed to last page of this manual for running board install instructions and torque values.

For Technical support please call our team at 1-866-717-6645 and one of our experts will assist you with this installation.

***Thank you for choosing Romik.***



# Running Board Installation Instructions



**RAL / RB2 / REC / RCV / RZR**



**ROB / ROF / RPD**

- 1) Flip your Romik running boards onto a flat surface, make sure to place the running boards on a towel or cardboard in order to protect the surface Figure 1.
- 2) Loosen the M8 bolts on back of your running boards Figure 2. Depending on your model there will be either 6 or 8 bolts installed per side.
- 3) Once your brackets have been installed, place the running board onto the brackets as shown on Figure 3.
- 4) Adjust running boards, centering on vehicle. Hand tight M8 hardware on running boards.
- 5) Follow the torque procedures, torque M8 hardware to **7 ft-lbs** using a torque wrench.
- 6) Cleaning and maintaining your running boards is important, apply a light coat of a quality carnauba wax at least 2X per year. Wash often with mild soap and make sure to remove all soap residue. Many car automatic carwashes use a strong soap, make sure to use enough water to remove all residue.
- 7) Register your products at [www.Romik.com/contact/productregistration](http://www.Romik.com/contact/productregistration)
- 8) Warranty information at [www.Romik.com/warranty](http://www.Romik.com/warranty)