



Installation Instructions

REV 3 01/08/2020

Part No. **1012**

Product: Running Boards

Application:

Audi Q5 2009 - 2017

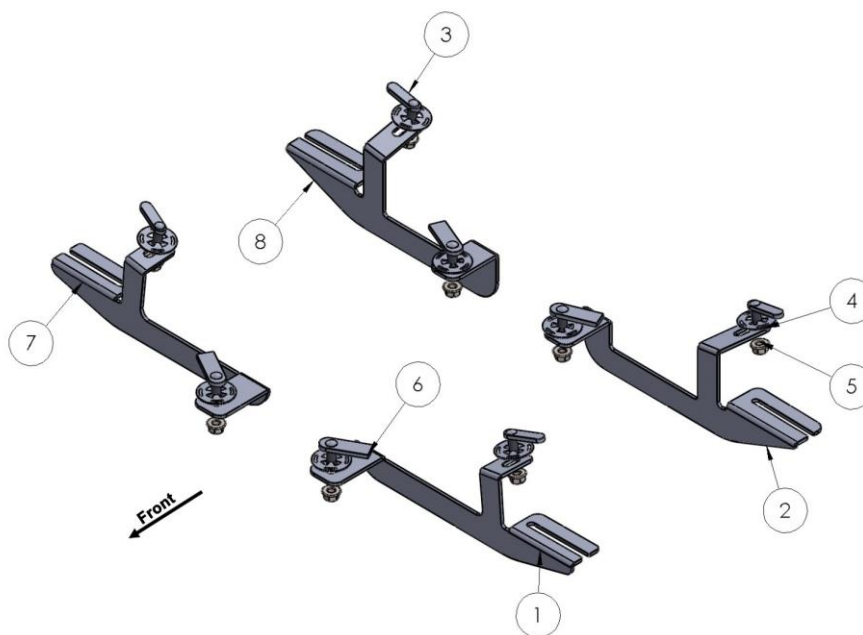
Level of Difficulty: 1 2 **3** 4 5

Installation Time: 90 min

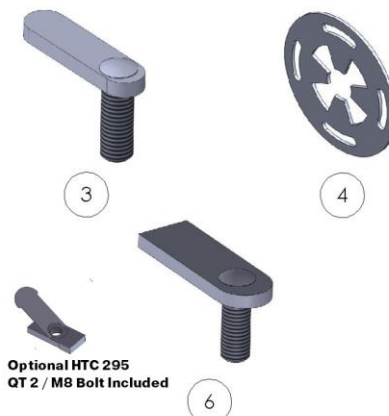
Hardware	Torque Specifications
M6 Bolt	3 ft-lbs.
M8 Bolt	7 ft-lbs.
M10 Bolt	16 ft-lbs.
M12 Bolt	28 ft-lbs.

ATTENTION: Use correct torque settings to avoid damaging the running boards and or mounting brackets. Failure to do so will void your warranty.

If you have any questions please contact our technical team at 1-866-717-6645



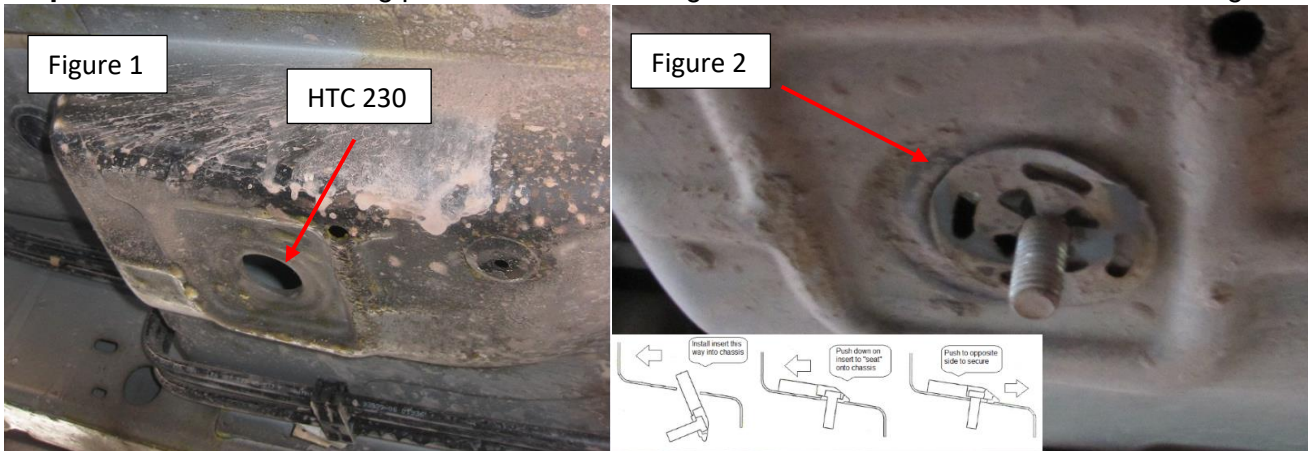
ITEM	PART NUMBER	QTY
1	1012850F0 DRIVER	1
2	1012850B0 DRIVER	1
3	HTC 243 - M10x25(5x13x50)	4
4	HTC 269 KLIPS (M10)	8
5	DIN 6923 FLANGE NUT M10	8
6	HTC 230 - M10x25(5x20x60)	4
7	1012850F0 PASSENGER	1
8	1012850B0 PASSENGER	1



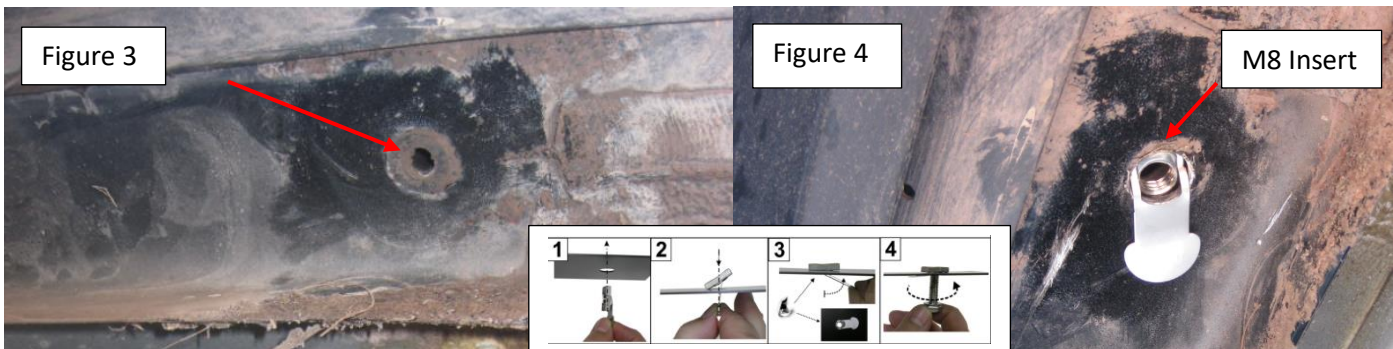


Step 1: Remove plastic undercarriage panels, note panels will need trimming to allow access to brackets

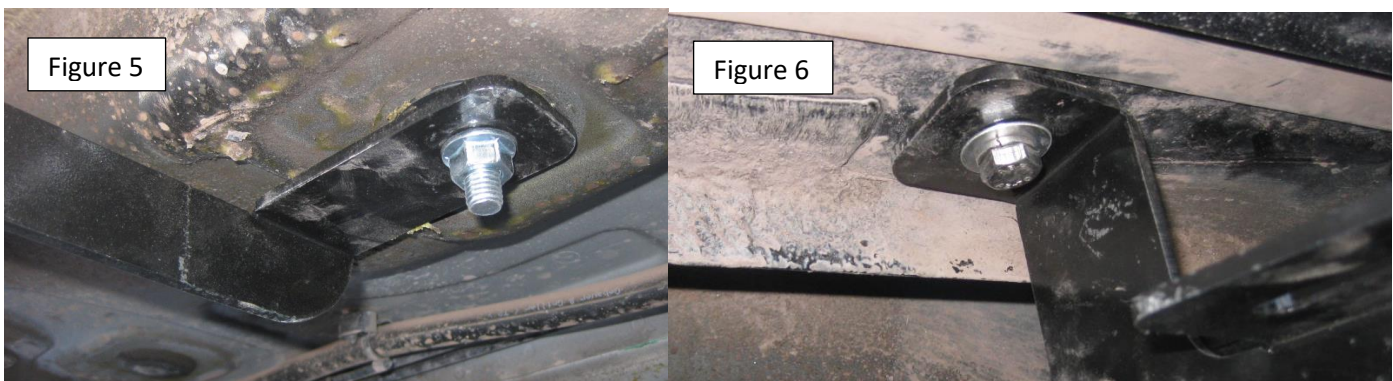
Step 2: Locate front mounting points as shown on Figure 1 install HTC 230 as shown below Figure 2.



Step 3: Locate outer mounting points as shown on Figure 3 your model may differ. Install special M8 insert as shown on Figure 4 please see how to install insert. It may be necessary to enlarge hole to 13mm.



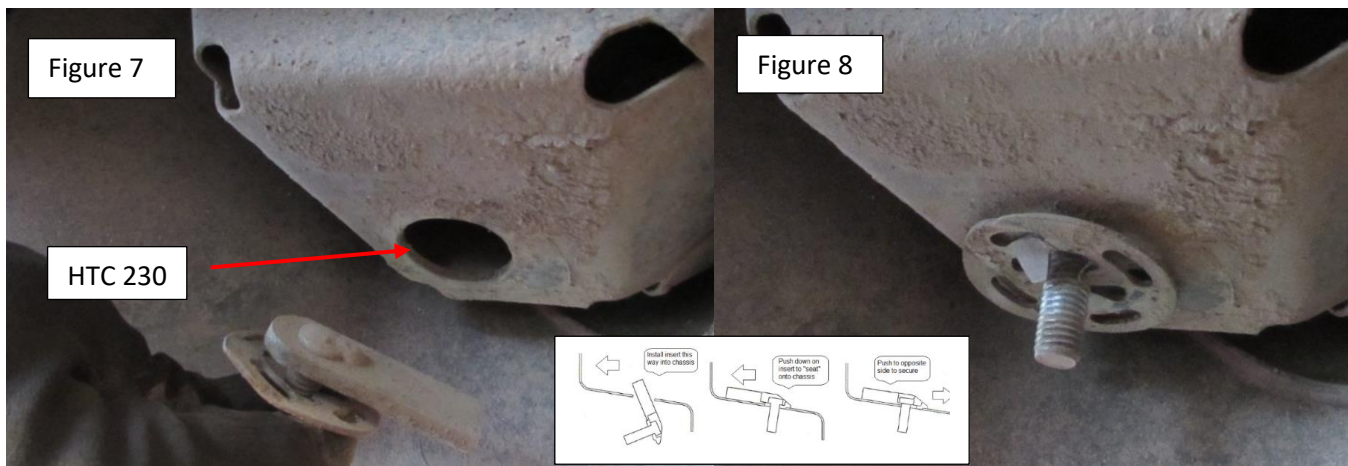
Step 4: Install front brackets as shown on Figure 5 and Figure 6. Do not tighten hardware



Step 5: Proceed to rear brackets.

Installation Instructions 1012 Audi Q5 2009-2017

Step 6: Locate rear mounting holes as shown on Figure 7 install HTC 230 as shown on Figure 8.



Step 7: Locate rear outer mounting points Figure 9 and install HTC 243 as shown on Figure 10.



Step 8: Install rear bracket as shown on Figure 11 and Figure 12. Do not tighten hardware



Step 9: Loosen M8 hardware on back of the running boards (see last page) and install onto brackets.

Installation Instructions 1012 Audi Q5 2009-2017

Step 10: Reinstall plastic panels and trim as necessary Figure 13 and Figure 14



Figure 13



Figure 14

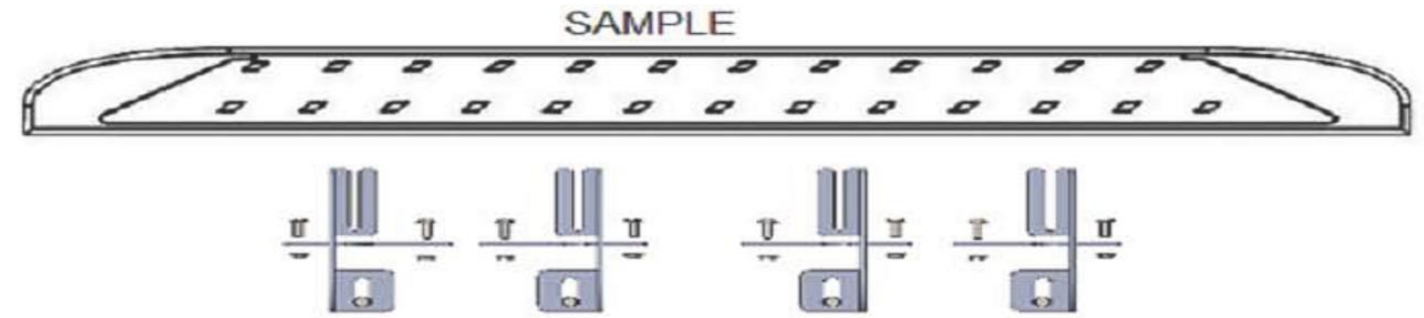
Step 11: Repeat procedure on opposite side.

Step 12: Proceed to last page of this manual for running board install instructions and torque values.

For Technical support please call our team at 1-866-717-6645 and one of our experts will assist you with this installation.

Thank you for choosing Romik.

Running Board Installation Instructions



RAL / RB2 / REC / RCV / RZR



ROB / ROF / RPD

- 1) Flip your Romik running boards onto a flat surface, make sure to place the running boards on a towel or cardboard in order to protect the surface Figure 1.
- 2) Loosen the M8 bolts on back of your running boards Figure 2. Depending on your model there will be either 6 or 8 bolts installed per side.
- 3) Once your brackets have been installed, place the running board onto the brackets as shown on Figure 3.
- 4) Adjust running boards, centering on vehicle. Hand tight M8 hardware on running boards.
- 5) Follow the torque procedures, torque M8 hardware to **7 ft-lbs** using a torque wrench.
- 6) Cleaning and maintaining your running boards is important, apply a light coat of a quality carnauba wax at least 2X per year. Wash often with mild soap and make sure to remove all soap residue. Many car automatic carwashes use a strong soap, make sure to use enough water to remove all residue.
- 7) Register your products at www.Romik.com/contact/productregistration
- 8) Warranty information at www.Romik.com/warranty