



## Installation Instructions

REV 3 02/24/20

Part No. **2015**

Product: Running Boards

Application: **Crew Cab**

**Dodge Ram 1500 2009-2018**

**Dodge Ram HD 2019+**

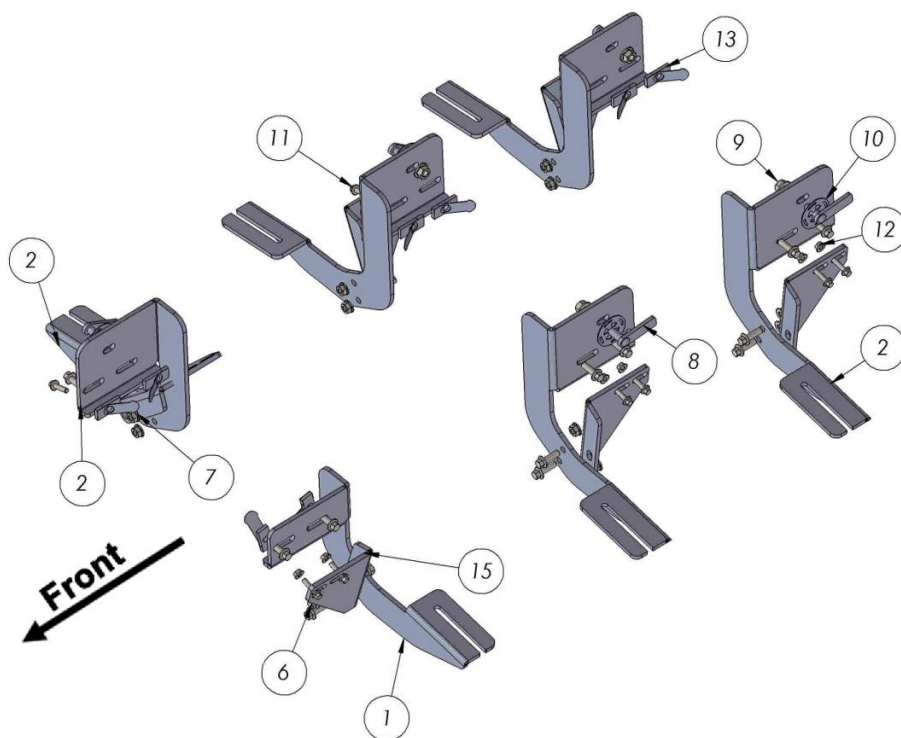
Level of Difficulty: **1** 2 3 4 5

Installation Time: 60 Min

Hardware	Torque Specifications
M6 Bolt	3 ft-lbs.
M8 Bolt	7 ft-lbs.
M10 Bolt	16 ft-lbs.
M12 Bolt	28 ft-lbs.

**ATTENTION:** Use correct torque settings to avoid damaging the running boards and or mounting brackets. Failure to do so will void your warranty.

If you have any questions please contact our technical team at 1-866-717-6645



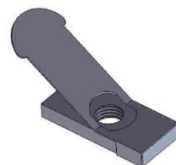
ITEM	PART NAME	QTY
1	2016850F0 DRIVER	1
2	2016850C0B0 DRIVER	3
3	2016850F0C0B0 PASSENGER	2
4	2016850FCB1 DRIVER	3
5	2016850FCB1 PASSENGER	2
6	DIN 6921 FLANGE BOLT M8 x 25	24
7	DIN 6923 FLANGE NUT M8	12
8	HTC 262 - M10x30(5x15x60)	5
9	DIN 6923 FLANGE NUT M10	4
10	HTC 269 CLIPS (M10)	5
11	DIN 6921 FLANGE BOLT M6 x 25	12
12	DIN 6923 FLANGE NUT M6	12
13	HTC 295 M8 SPECIAL NUT	12
15	2016850FCB1 DRIVER B	1



8



10



13



## Installation Instructions

REV 3 02/24/20

Part No. **2015**

Product: Running Boards

Application: **Quad Cab**

**Dodge Ram 1500 2009-2018**

**Dodge Ram HD 2019+**

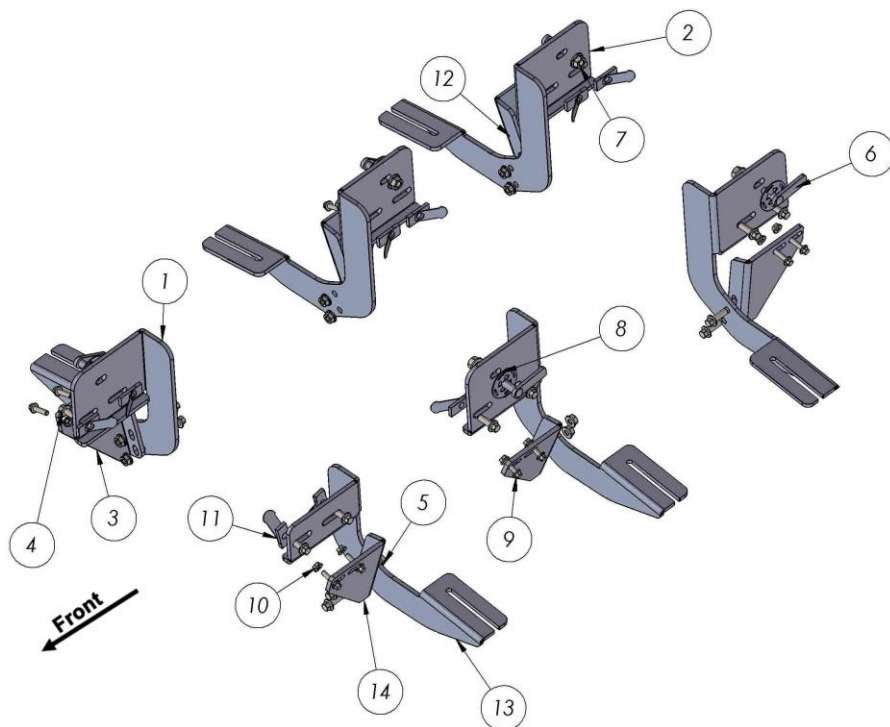
Level of Difficulty: **1** 2 3 4 5

Installation Time: 60 Min

Hardware	Torque Specifications
M6 Bolt	3 ft-lbs.
M8 Bolt	7 ft-lbs.
M10 Bolt	16 ft-lbs.
M12 Bolt	28 ft-lbs.

**ATTENTION:** Use correct torque settings to avoid damaging the running boards and or mounting brackets. Failure to do so will void your warranty.

If you have any questions please contact our technical team at 1-866-717-6645



ITEM	PART NAME	QTY
1	2015850C0B0	2
2	2015850F0C0B0	3
3	2015850FCB1	2
4	DIN 6921 FLANGE BOLT M8 x 25	24
5	DIN 6923 FLANGE NUT M8	12
6	HTC 262 - M10x30(5x15x60)	5
7	DIN 6923 FLANGE NUT M10	4
8	HTC 269 CLIPS (M10)	5
9	DIN 6921 FLANGE BOLT M6 x 25	12
10	DIN 6923 FLANGE NUT M6	12
11	HTC 295 M8 SPECIAL NUT	12
12	2015850FCB1	3
13	2015850F0	1
14	2015850FCB1 A	1



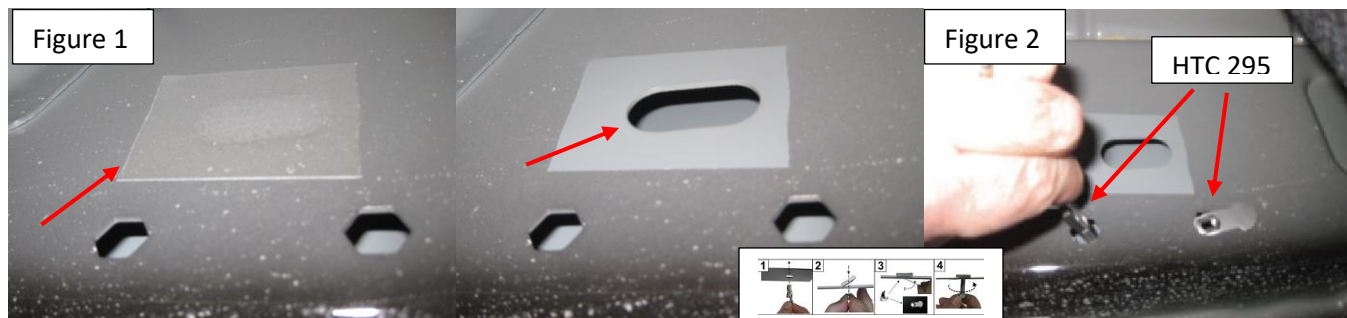
# Installation Instructions 2015 Bracket Kit

Video  
Installation  
Instruction:

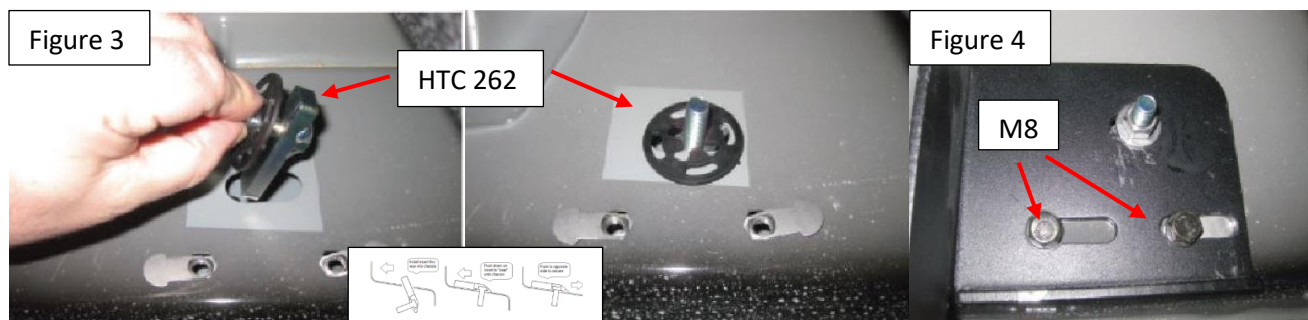


**Step 1:** Locate front mounting locations and hardware as per 1<sup>st</sup> page of this installation manual for Crew Cab use page one, for Quad Cab use page 2.

**Step 2:** Remove factory tape from all 3 locations, Insert HTC 295 on all 3 locations as shown Figure 2. Note some models come equipped with threaded inserts and this step may not be necessary.



**Step 3:** Install provided HTC 262 as shown on Figure 3, install main bracket as shown on Figure 4. Do not tighten



**Step 4:** Install extra support bracket with supplied M6 hardware on all 3 locations Figure 5, attach using supplied M6 hardware Figure 6. Attach main bracket to extra support using supplied M8 hardware Figure 7.

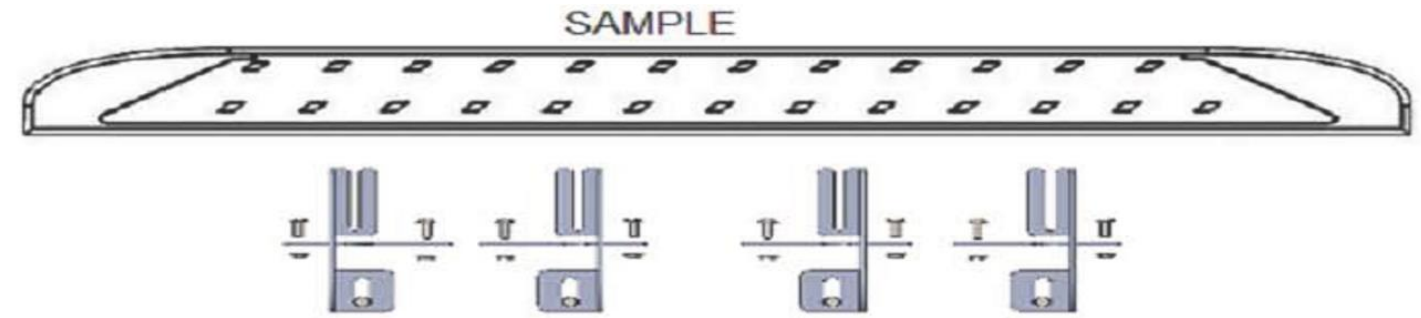


**Step 5:** Proceed to last page of this manual for running board install instructions and torque values.

For Technical support please call our team at 1-866-717-6645 and one of our experts will assist you with this installation.

**Thank you for choosing Romik.**

# Running Board Installation Instructions



**RAL / RB2 / REC / RCV / RZR**



**ROB / ROF / RPD**

- 1) Flip your Romik running boards onto a flat surface, make sure to place the running boards on a towel or cardboard in order to protect the surface Figure 1.
- 2) Loosen the M8 bolts on back of your running boards Figure 2. Depending on your model there will be either 6 or 8 bolts installed per side.
- 3) Once your brackets have been installed, place the running board onto the brackets as shown on Figure 3.
- 4) Adjust running boards, centering on vehicle. Hand tight M8 hardware on running boards.
- 5) Follow the torque procedures, torque M8 hardware to **7 ft-lbs** using a torque wrench.
- 6) Cleaning and maintaining your running boards is important, apply a light coat of a quality carnauba wax at least 2X per year. Wash often with mild soap and make sure to remove all soap residue. Many car automatic carwashes use a strong soap, make sure to use enough water to remove all residue.
- 7) Register your products at [www.Romik.com/contact/productregistration](http://www.Romik.com/contact/productregistration)
- 8) Warranty information at [www.Romik.com/warranty](http://www.Romik.com/warranty)