



## Installation Instructions

REV 6 12/26/24

Part No. **2219**

Product: Running Boards

**Acura MDX 2014 - 2020**

**Honda Pilot 2016 - 2022**

**Honda Passport 2019 - 2025**

**Honda Ridgeline 2017 - Present**

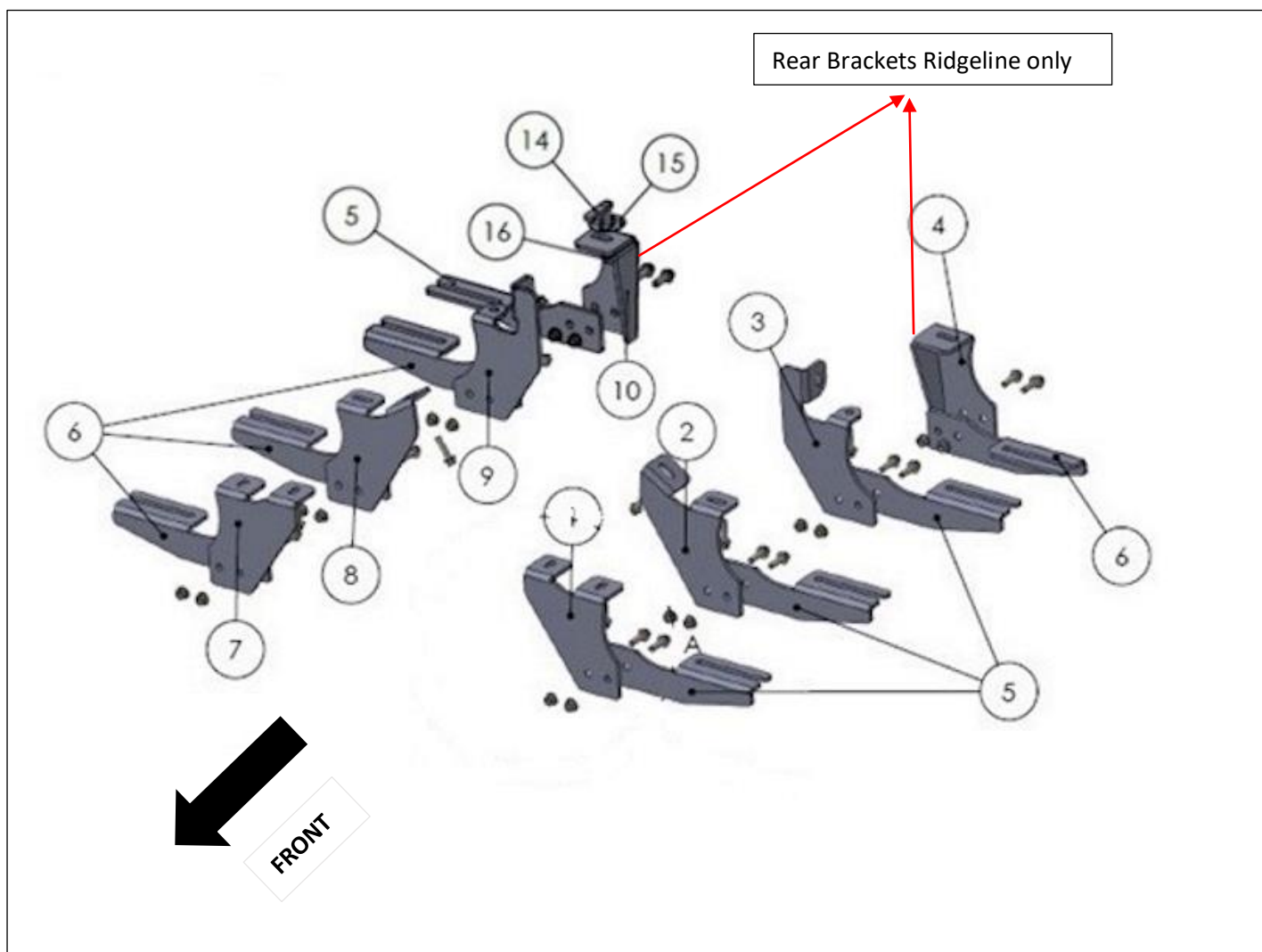
Level of Difficulty: 1 2 3 4 5

Hardware	Torque Aluminum	Torque Steel to Steel
M6 Bolt	3 ft-lbs.	14 ft-lbs.
M8 Bolt	7 ft-lbs.	35 ft-lbs.
M10 Bolt	16 ft-lbs.	64 ft-lbs.
M12 Bolt	28 ft-lbs.	112 ft-lbs.

**ATTENTION:** Use correct torque settings to avoid damaging the running boards and or mounting brackets. Failure to do so will void your warranty. If you have any questions, please contact our technical team at 1-866-717-6645

**Attention: Please make sure that you have the latest instructions from *Romik.com***

QR Scan



## 2219



1  
2219850F1  
DRIVER SIDE  
1 x QTY



2  
2219850C1  
DRIVER SIDE  
1 x QTY



3  
2219850B1  
DRIVER SIDE  
1 x QTY



4  
2219850B2  
DRIVER SIDE  
1 x QTY



5  
2219850F2  
DRIVER SIDE FRONT-CENTER  
PASSENGER SIDE REAR  
BRACKET  
4 x QTY



6  
2219850F2  
PASSENGER SIDE FRONT-CENTER  
DRIVER SIDE REAR  
BRACKET  
4 x QTY



7  
2219850F1  
PASSENGER SIDE  
1 x QTY



8  
2219850C1  
PASSENGER SIDE  
1 x QTY



9  
2219850B1  
PASSENGER SIDE  
1 x QTY



10  
2219850B2  
PASSENGER SIDE  
1 x QTY

## HARDWARE



11  
M8x30  
FLANGE BOLT  
12x



12  
M10 FLANGE  
NUT  
16x



13  
M10x25  
FLANGE  
BOLT  
16x



14  
HTC 243  
M10x25 (4x12x50)  
2x



15  
HTC 269  
M10 CLIPS  
2x



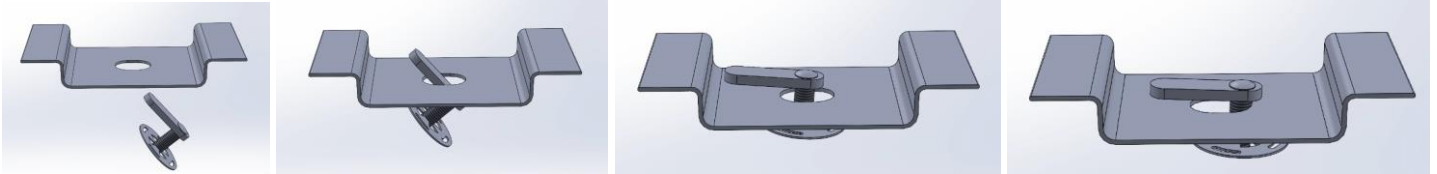
16  
M10 FLANGE  
NUT  
2x

# Installation Instructions 2219 Bracket Kit

**NOTE: For Honda Ridgeline models use 4 brackets all other models only use first 3 brackets**

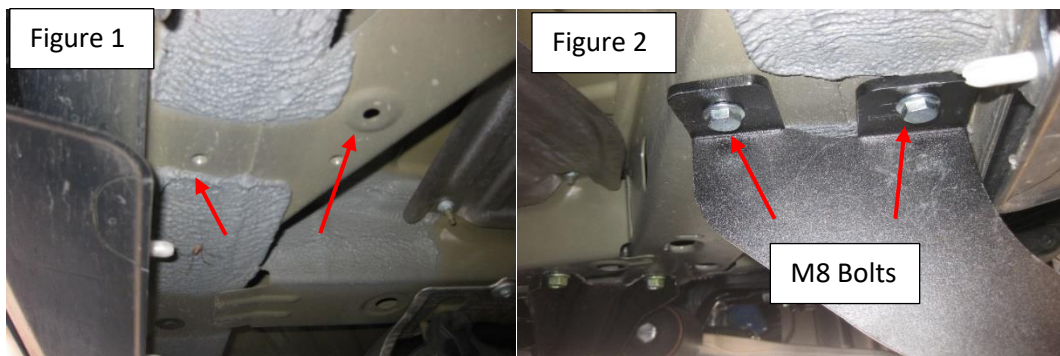
Due to body shape small visible gap in the middle of the vehicle. If not sure please review images on [www.Romik.com](http://www.Romik.com) before installing.

**Important Install Tip:** When installing Romik HTC inserts follow the sequence below. Make sure the HTC is seated correctly and do not use power tools as this will only spin the insert and possibly damage it. Test by tugging on it before installing bracket. Blue loctite is highly recommended.



**Step 1:** Pre-Assemble two-piece brackets as shown on first page of the instruction manual. **Do not tighten.** Brackets need to be snug, make sure they're not tightened.

**Step 2:** Install front bracket using supplied M8 hardware Figure 2 Do not tighten.



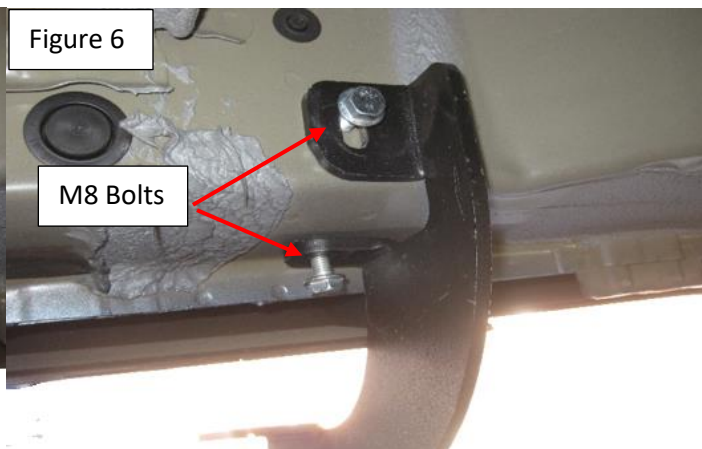
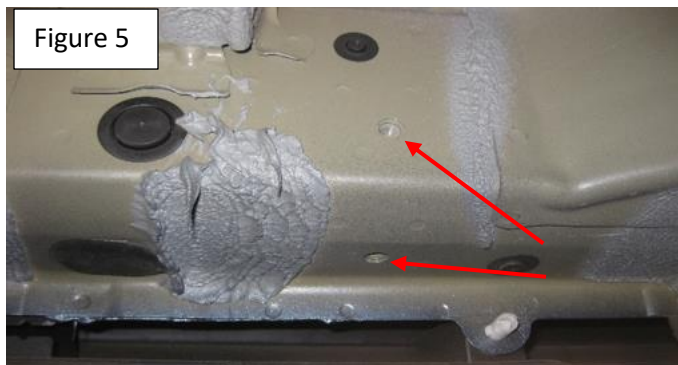
**Step 2:** Locate 2nd bracket mounting area Figure 3. Using supplied M8 hardware install middle bracket Figure 4 Do not tighten,





# Installation Instructions 2219 Bracket Kit

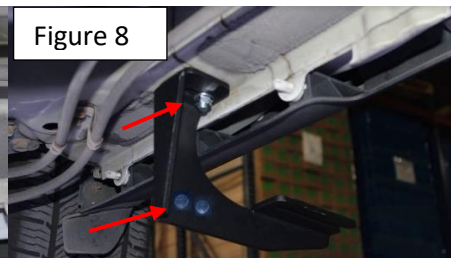
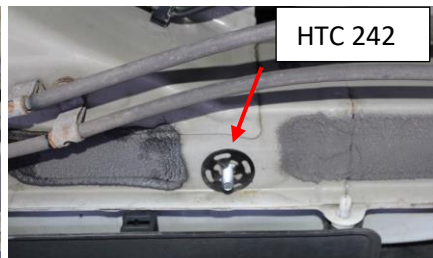
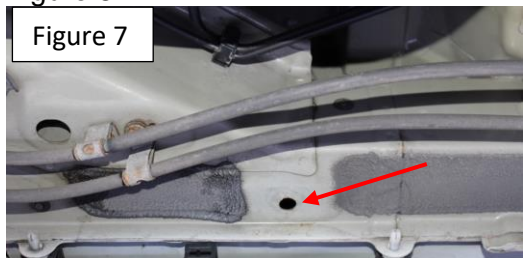
**Step 3:** Locate 3rd bracket mounting area Figure 5. Using supplied M8 hardware install middle bracket Figure 6 Do not tighten,



**Step 3:** Acura MDX, Honda Passport, Pilot proceed to step 5 . **Honda Ridgeline proceed to step 4**

**Step 4:** Locate Honda Ridgeline rear most bracket mounting location Figure 7, remove rubber plug and Install supplied HTC 242 as shown Install bracket Do not tighten.

**Step 5:** Tighten the main brackets (All) to the chassis Figure 8. Install running boards onto brackets hand tight only, level the running boards (A level is suggested) and tighten the lower portion of the brackets to 65 ft lbs. Figure 8.



**Step 6:** Proceed to last page of this manual for running board install instructions and torque values

For Technical support please call our team at 1-866-717-6645 and one of our experts will assist you with this installation.

***Thank you for choosing Romik.***

# Installation Instructions Running Boards

**NOTE: Use of power tools will damage the bottom of the running board and void your warranty.**

Step 1: loosen the M8 hardware on back of the running boards.

Step 2: Slide running board onto brackets

Step 3: Tighten hardware to 7 ft lbs.

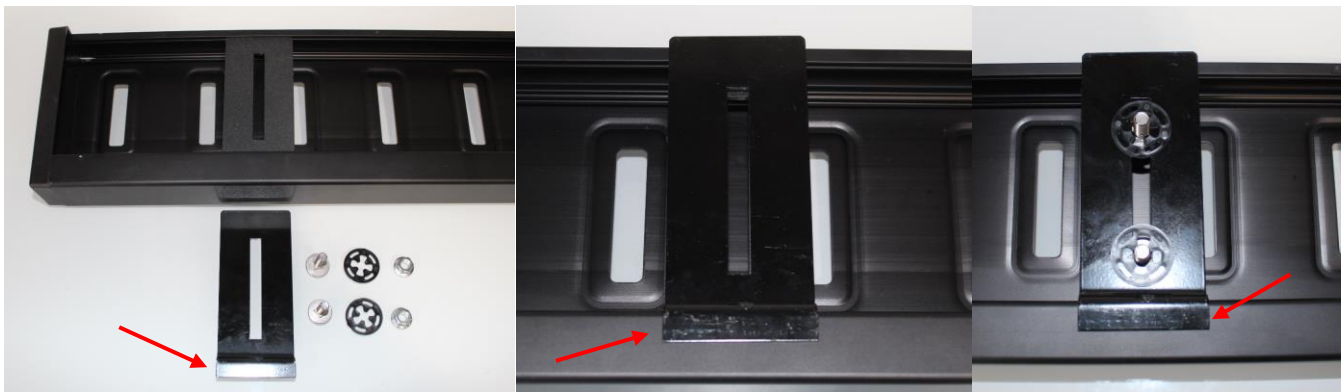


## ROF/RPD/ROB Running boards

Step 1: Place clamping plate on top of running board as shown below. Make sure clamping plate sits correctly on running board surface.

Step 2: Install carriage bolts and plastic retaining clips as shown below.

Step 3: Install and tighten hardware to 7 ft lbs.



## Product Registration and Warranty Information

- Register your Romik products at <https://romik.com/productregistration>
- Warranty information at <http://www.romik.com/warranty>



## Cleaning and maintaining your Romik Running boards

Cleaning and maintaining your running boards is important, apply a light coat of a quality carnauba wax at least 2X per year. Wash often with mild soap and make sure to remove all soap residue. Many car automatic carwashes use a strong soap, make sure to use enough water to remove all residue.

For video instructions on how to clean your Romik products please click here <https://romik.com/cleaning>