



Installation Instructions

Part No. **2018**

Product: Running Boards

Application: **RAM 1500 2019 – Present**

Level of Difficulty: **1** 2 3 4 5

Installation Time: 90 Min.

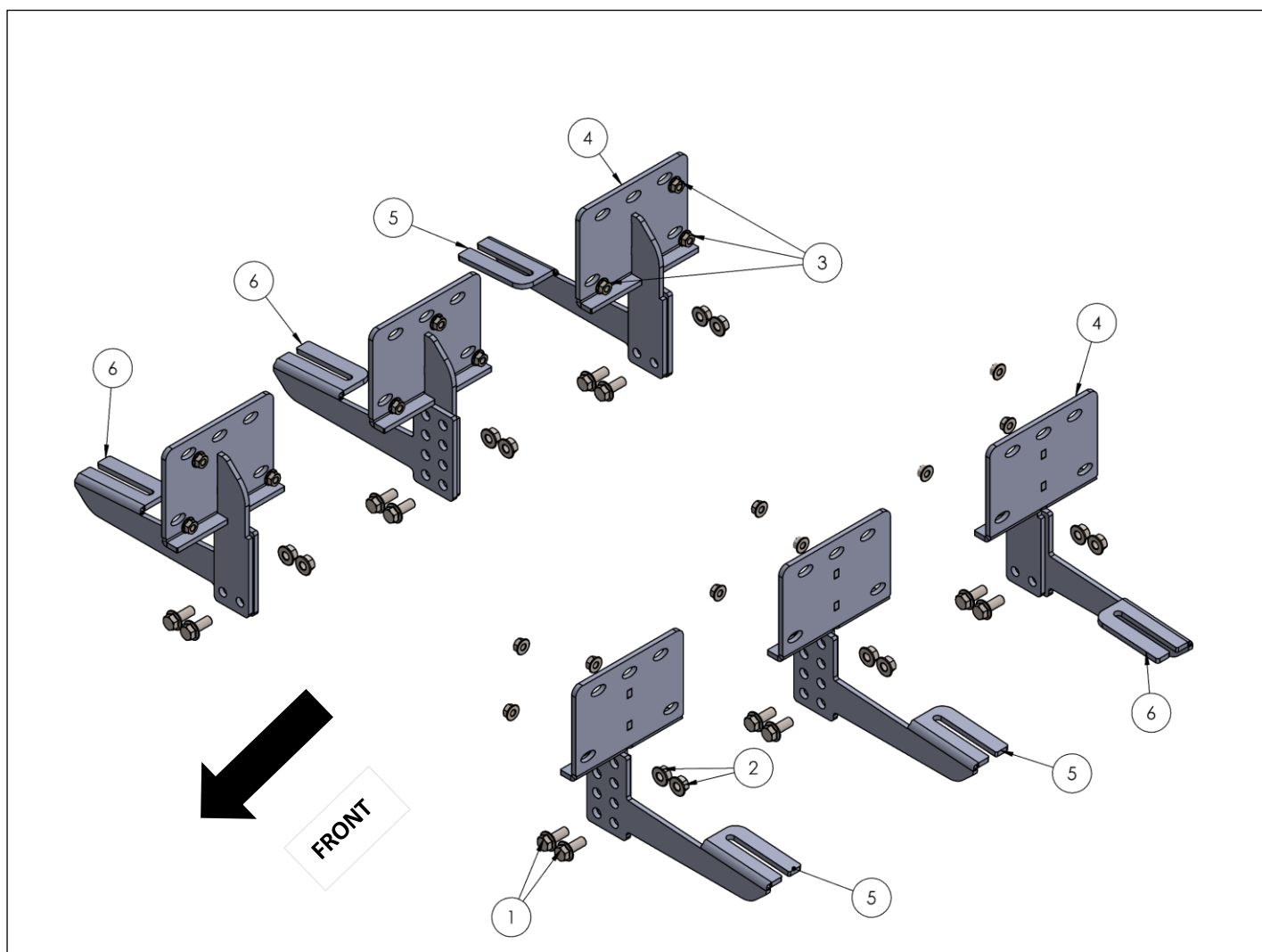
REV 3 08/15/23

| Hardware | Torque Aluminum | Torque Steel to Steel |
|----------|-----------------|-----------------------|
| M6 Bolt | 3 ft-lbs. | 14 ft-lbs. |
| M8 Bolt | 7 ft-lbs. | 35 ft-lbs. |
| M10 Bolt | 16 ft-lbs. | 64 ft-lbs. |
| M12 Bolt | 28 ft-lbs. | 112 ft-lbs. |

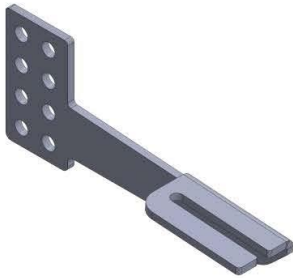
ATTENTION: Use correct torque settings to avoid damaging the running boards and or mounting brackets. Failure to do so will void your warranty. If you have any questions, please contact our technical team at 1-866-717-6645

Attention: Please make sure that you have the latest instructions from **Romik.com**

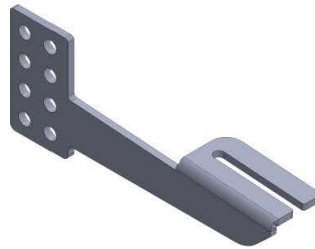
QR Scan



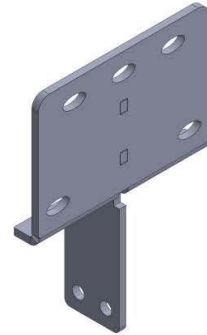
2018



PART NO 6
2018850FCB0-1
QT 3

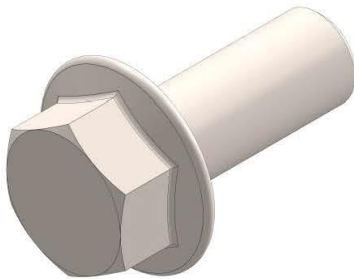


PART NO 5
2018850FCB0-2
QT 3



PART NO 4
2018850FCB1
QT 6

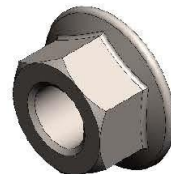
HARDWARE



PART NO 1
DIN 6921 M10X25
QT 12



PART NO 2
DIN 6923 M10
QT 12



PART NO 2
DIN 6923 M8
QT 18

Installation Instructions 2018 Bracket Kit

Thank you for choosing the Romik DRP System. This system allows you to adjust the brackets from 0 to 3-inch drop. If you ordered the **optional** DRP cover you can customize them to match the desired height by cutting on the lines inside the cover. Please test before cutting, in many cases you will be able to tuck the cover behind the body of the vehicle without cutting. NOTE: **Blue Loctite is recommended on all metal parts**

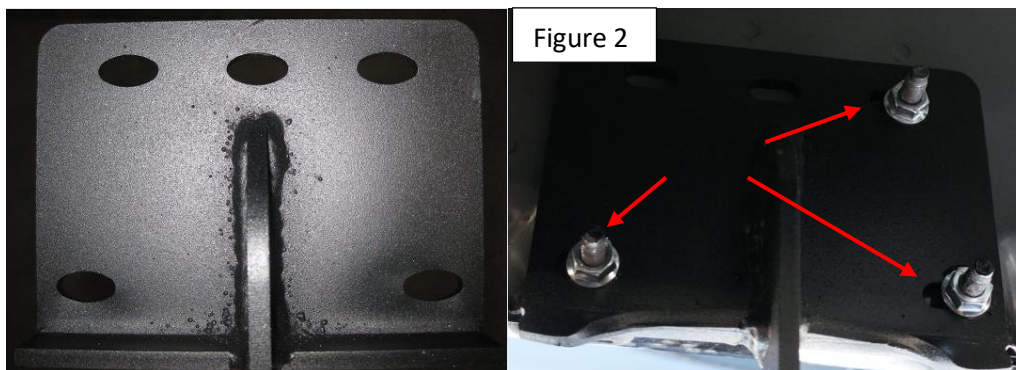


Step 1: Locate front mounting points Figure . Assemble DRP bracket and set to desired height. Attach to vehicle do not tighten figure 2.

Step 2: Using a 8mm tap and die kit clean the threads before installation Figure 1

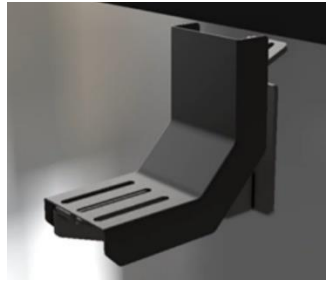


Step 3: Once threaded studs are clean proceed to install brackets using supplied M8 hardware Figure 2. Do not tighten.



Installation Instructions “DRP” Bracket Kit

Step 3: Install DRP covers on brackets use slots to center the covers. The DRP covers are placed between the running board and the bracket



Step 4: Torque bracket M8 bolts to 35 lbs. Torque M10 bolts to 64 lbs proceed to last page of this manual for running board install instructions and torque values. Use of a level is recommended and **do not exceed the recommended torque values for Aluminum running boards** .

NOTE: DRP system is designed to assist you getting in and out of the vehicle. However the lower you place the brackets the lower the weight rating. For maximum weight capacity use DRP brackets at zero.

For Technical support please call our team at 1-866-717-6645 and one of our experts will assist you with this installation.

Thank you for choosing Romik.

Installation Instructions Running Boards

NOTE: Use of power tools will damage the bottom of the running board and void your warranty.

Step 1: loosen the M8 hardware on back of the running boards.

Step 2: Slide running board onto brackets

Step 3: Tighten hardware to 7 ft lbs.

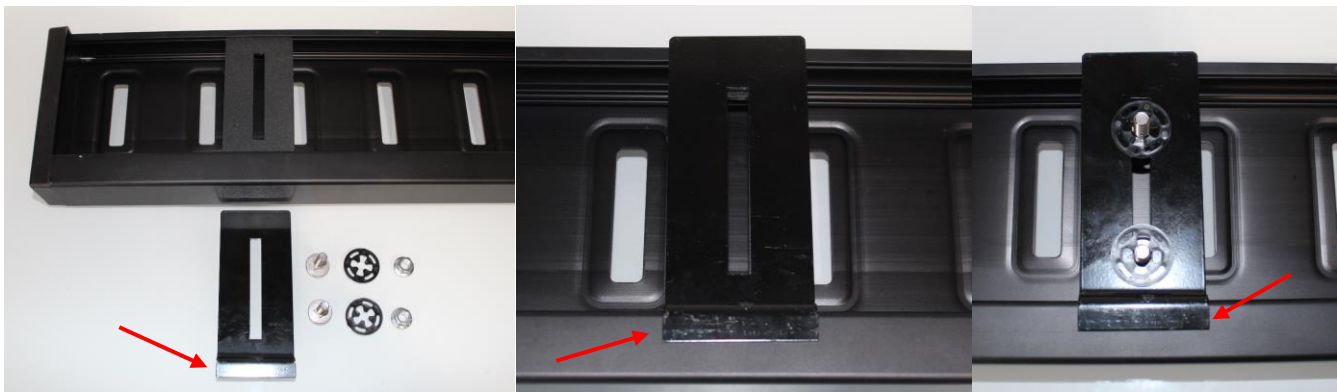


ROF/RPD/ROB Running boards

Step 1: Place clamping plate on top of running board as shown below. Make sure clamping plate sits correctly on running board surface.

Step 2: Install carriage bolts and plastic retaining clips as shown below.

Step 3: Install and tighten hardware to 7 ft lbs.



Product Registration and Warranty Information

- Register your Romik products at <https://romik.com/productregistration>
- Warranty information at <http://www.romik.com/warranty>

Cleaning and maintaining your Romik Running boards

Cleaning and maintaining your running boards is important, apply a light coat of a quality carnauba wax at least 2X per year. Wash often with mild soap and make sure to remove all soap residue. Many car automatic carwashes use a strong soap, make sure to use enough water to remove all residue.

For video instructions on how to clean your Romik products please click here <https://romik.com/cleaning>