



## Installation Instructions

Part No. **3617**

Product: Running Boards

Application: **Subaru Ascent 2019 – Present**

Level of Difficulty: 1 2 **3** 4 5

Installation Time: 90 Min.

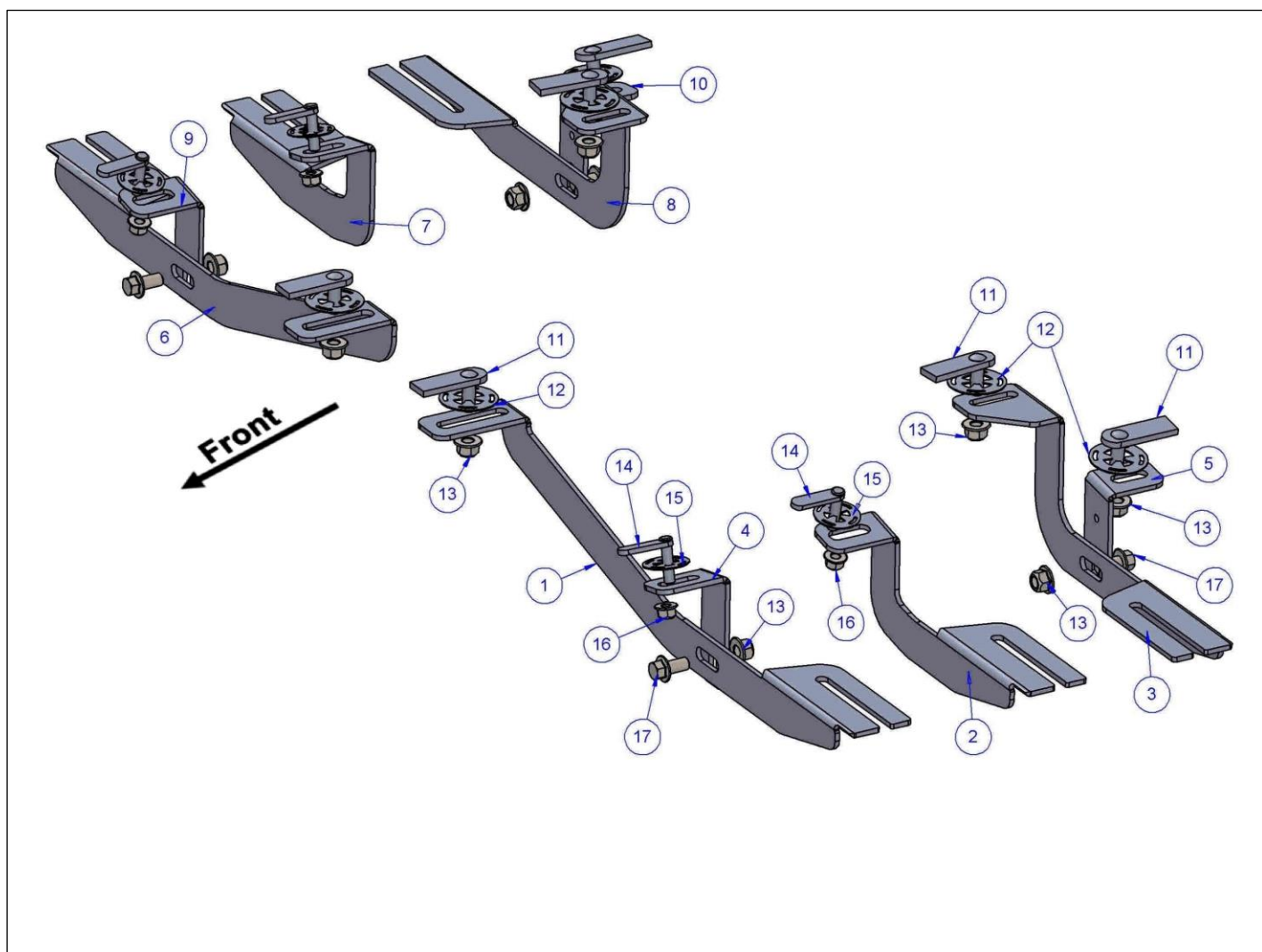
REV 2 02/01/23

Hardware	Torque Aluminum	Torque Steel to Steel
M6 Bolt	3 ft-lbs.	14 ft-lbs.
M8 Bolt	7 ft-lbs.	35 ft-lbs.
M10 Bolt	16 ft-lbs.	64 ft-lbs.
M12 Bolt	28 ft-lbs.	112 ft-lbs.

**ATTENTION:** Use correct torque settings to avoid damaging the running boards and or mounting brackets. Failure to do so will void your warranty. If you have any questions, please contact our technical team at 1-866-717-6645

Attention: Please make sure that you have the latest instructions from **Romik.com**

QR Scan



## 3617

1



DRIVER SIDE  
FRONT BRACKET

1 x QTY

2



DRIVER SIDE  
CENTER BRACKET

1 x QTY

3



DRIVER SIDE  
BACK BRACKET

1 x QTY

4



DRIVER SIDE  
FRONT SUPPORT BRACKET

1 x QTY

5



DRIVER SIDE  
BACK SUPPORT BRACKET

1 x QTY

6



PASSENGER SIDE  
FRONT BRACKET

1 x QTY

7



PASSENGER SIDE  
CENTER BRACKET

1 x QTY

8



PASSENGER SIDE  
BACK BRACKET

1 x QTY

9



PASSENGER SIDE  
FRONT SUPPORT BRACKET

1 x QTY

10



PASSENGER SIDE  
BACK SUPPORT BRACKET

1 x QTY

## HARDWARE

11



HTC 230 – M10x25  
(5x20x60)

6x

12



HTC 269 –  
CLIPS M10

6x

13



M10  
FLANGE NUT

10x

14



HTC 226 – M8x25  
(4x10x37)

4x

15



HTC 271 -  
CLIPS M8

4x

16



M8  
NUT

4x

17

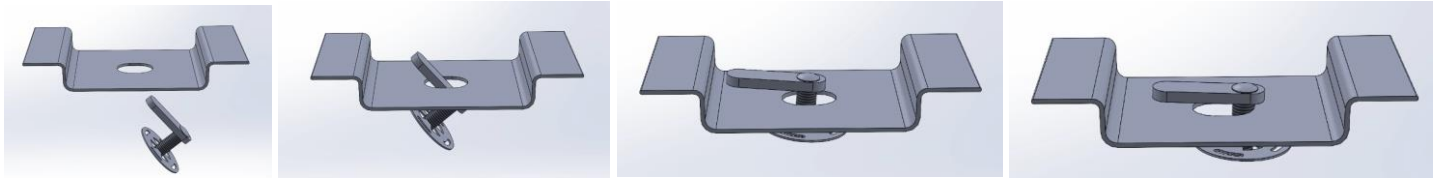


M10x25  
FLANGE BOLT

4x

# Installation Instructions 3617 Bracket Kit

**Important Install Tip:** When installing Romik HTC inserts follow the sequence below. Make sure the HTC is seated correctly and do not use power tools as this will only spin the insert and possibly damage it. Test by tugging on it before installing bracket. Blue loctite is highly recommended on all metal parts.



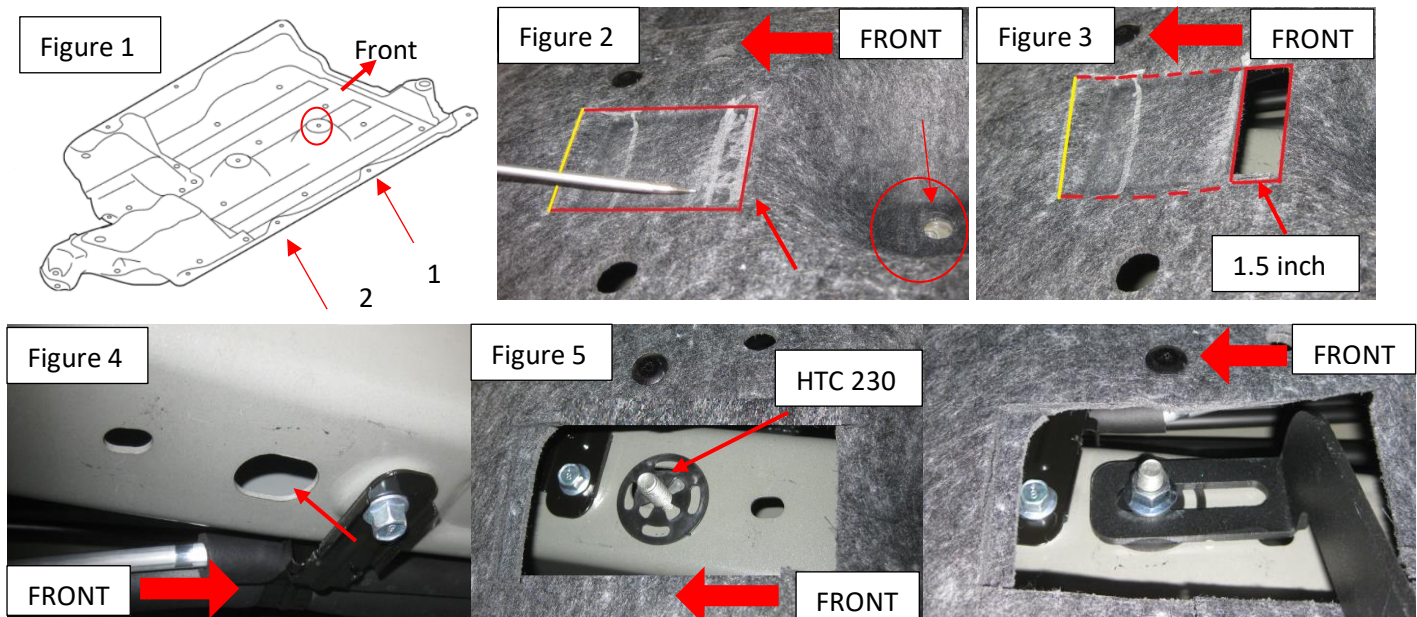
**NOTE:** This vehicle requires undercarriage panel trimming and 4 holes enlarged to complete. If you do not want to perform these two steps, please do not continue.

**Step 1:** Locate front mounting locations and hardware as per 1<sup>st</sup> page of this installation manual

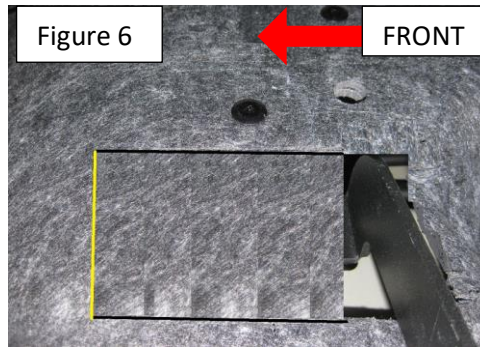
**Step 2:** The illustration below shows the locations of where you need to trim the panel. Please take your time reading this step so that you can have a clean install. Use red circle as reference to start this process.

**Step 3:** Note panel has an indentation that you will be modifying. Use the red lines as reference and mark a 5x3 inch square Figure 2. Remove a 1 inch by 3 inch portion as shown on Figure 3. Make a cut along the red dotted line. **DO NOT CUT YELLOW LINE.** Fold back to expose oval holes Figure 4.

**Step 4:** For instructional purposes we removed the panel and cut more to show how the insert is installed. Figure 5 Once bracket is installed and final adjustments performed you may fold cover back to hide as much as possible Figure 6.



# Installation Instructions 3617 Bracket Kit

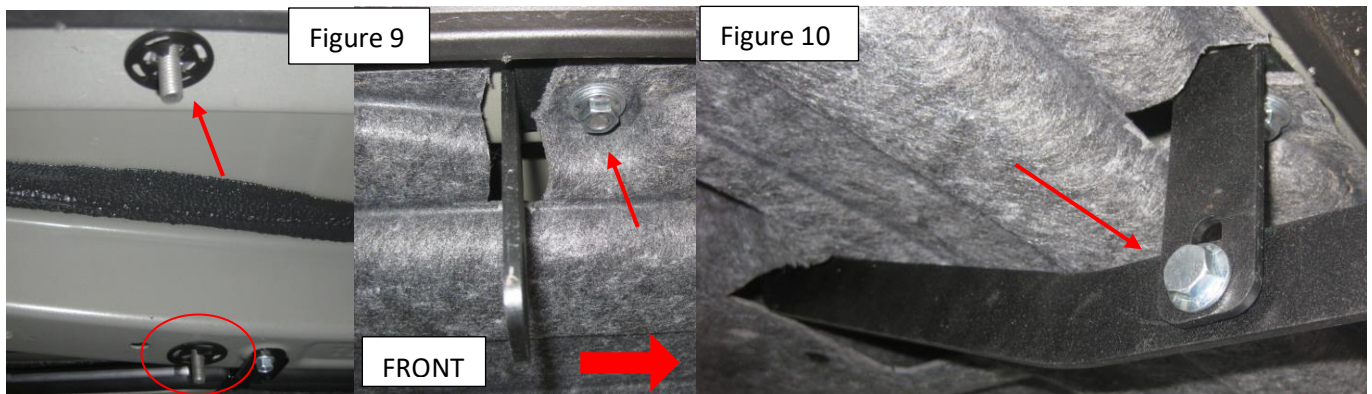


**Step 5:** Using the main insert as reference (red circle) locate the outer extra support area Figure 7 #1 on panel picture. Red arrow shows front of vehicle. Remove a 1x3 inch wide section of the panel to allow extra support to come out.

**Step 6:** Using a 14mm (9/16) drill bit enlarge the factory hole to accommodate the supplied HTC 226 insert Figure 8.

**Step 7:** Attach extra support and fasten panel at the same time Figure 9. Torque to specs.

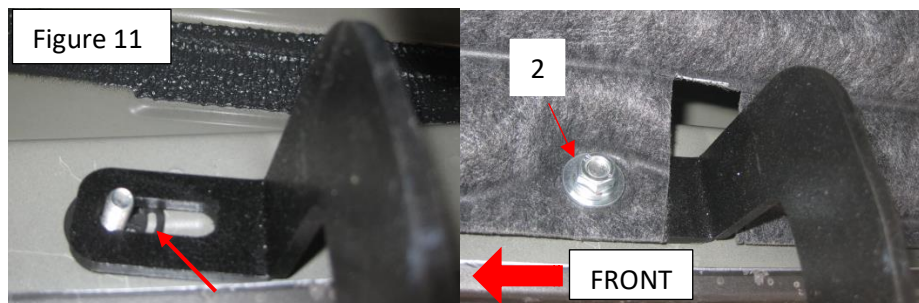
**Step 8:** Attach main bracket to extra support using supplied M10 hardware. Figure 10 Do not tighten.



**Step 9:** Locate the middle bracket area #2 as shown on Figure 1 of this manual. **Repeat Step 6 Figure 7, 8 and 9.** Using a 14mm (9/16) drill bit enlarge the factory hole to accommodate the supplied HTC 226 insert Figure 8.

# Installation Instructions 3617 Bracket Kit

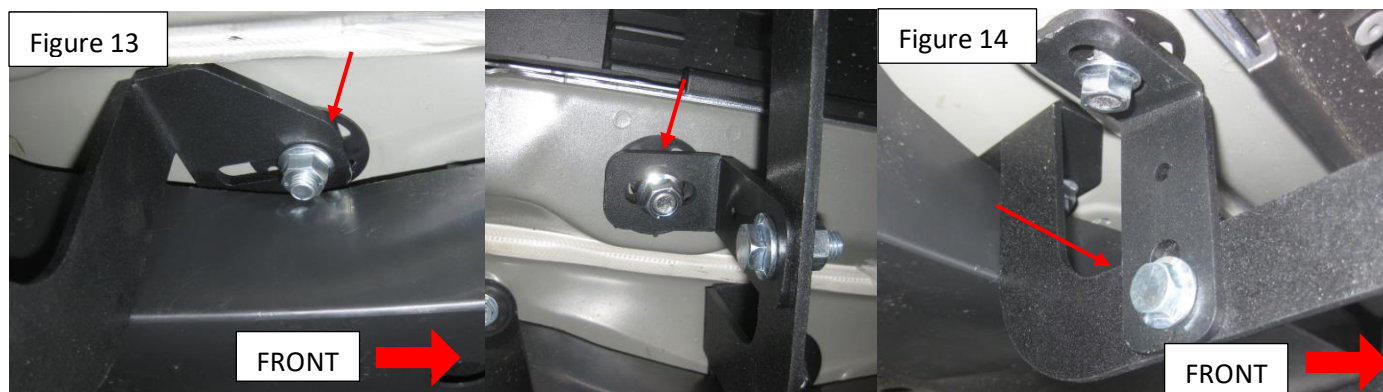
**Step 10:** Install middle bracket Figure 11. do not tighten,



**Step 11:** Locate rear bracket area, remove two rubber plugs as shown Figure 12. Install provided HTC 230.  
HINT: using your thumbs push the plastic panel inward to install the insert. If you cannot than loosen the panel.

**Step 12:** Install rear bracket as shown Figure 13 Do not tighten

**Step 13:** Install extra support and attach to main bracket using supplied M10 hardware. Do not tighten



**Step 14:** Proceed to last page of this manual for running board install instructions and torque values

For Technical support please call our team at 1-866-717-6645 and one of our experts will assist you with this installation

***Thank you for choosing Romik.***

# Installation Instructions Running Boards

**NOTE: Use of power tools will damage the bottom of the running board and void your warranty.**

**Step 1: loosen the M8 hardware on back of the running boards.**

**Step 2: Slide running board onto brackets**

**Step 3: Tighten hardware to 7 ft lbs.**



## ROF/RPD/ROB Running boards

**Step 1: Place clamping plate on top of running board as shown below. Make sure clamping plate sits correctly on running board surface.**

**Step 2: Install carriage bolts and plastic retaining clips as shown below.**

**Step 3: Install and tighten hardware to 7 ft lbs.**



## Product Registration and Warranty Information

- Register your Romik products at <https://romik.com/productregistration>
- Warranty information at <http://www.romik.com/warranty>

## Cleaning and maintaining your Romik Running boards

Cleaning and maintaining your running boards is important, apply a light coat of a quality carnauba wax at least 2X per year. Wash often with mild soap and make sure to remove all soap residue. Many car automatic carwashes use a strong soap, make sure to use enough water to remove all residue.

For video instructions on how to clean your Romik products please click here <https://romik.com/cleaning>