

Installation Instructions

REV 3 04/15/20

Part No. 3927 / 6310

Product: Running Boards

Application: Toyota / Lexus

RAV4 2013-2018

NX 2015+

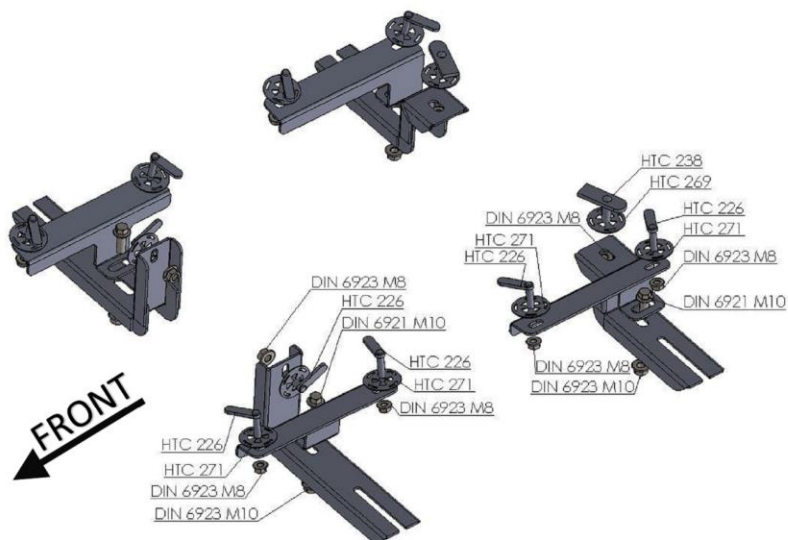
Level of Difficulty: 1 **2** 3 4 5

Installation Time: 60 Min








Hardware	Torque Specifications
M6 Bolt	3 ft.-lbs.
M8 Bolt	7 ft.-lbs.
M10 Bolt	16 ft.-lbs.
M12 Bolt	28 ft.-lbs.

ATTENTION: Use correct torque settings to avoid damaging the running boards and or mounting brackets. Failure to do so will void your warranty.

If you have any questions please contact our technical team at 1-866-717-6645



HARDWARE

2		HTC 238 - M10x30(4x20x60)	2		HTC 269 KLIPS (M10)	6		FLANGE NUT DIN 6923 (M10)
10		HTC 226 - M8X30 (4x10x37)	10		HTC 271 KLIPS (M8)	10		FLANGE NUT DIN 6923 (M8)
4		FLANGE BOLT DIN 6921 M10x30						

BRACKETS



(x2)



(x2)



(x2)



(x2)

Installation Instructions 3927 / 6310 Bracket Kit

Video
Installation
Instruction:



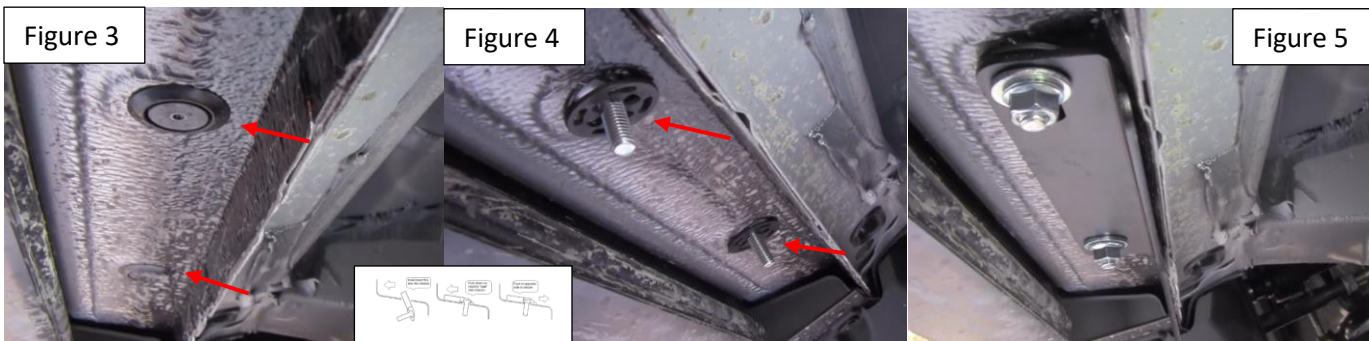
Note: Video install shows Toyota RAV4, use as reference

Step 1: Locate front mounting locations and hardware as per 1st page of this installation manual

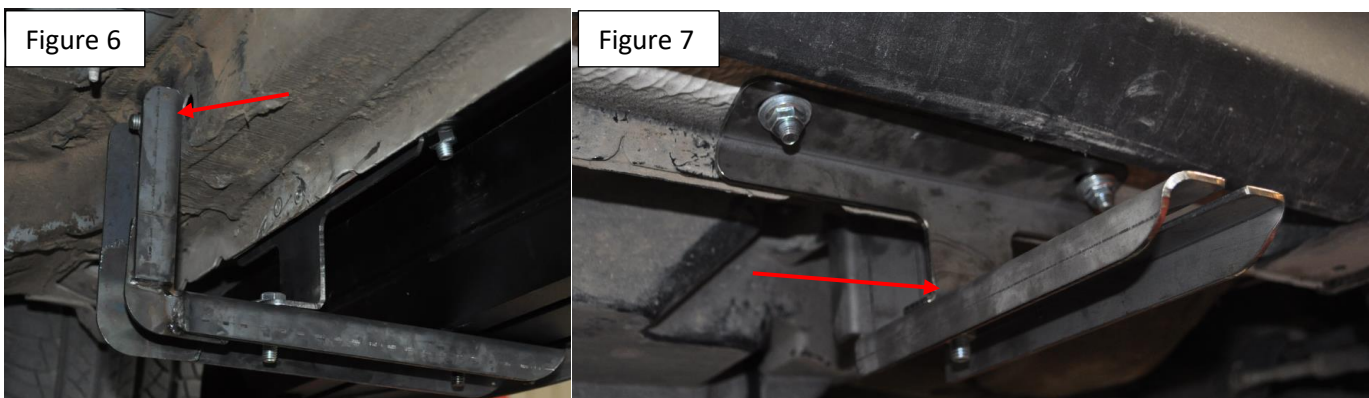
Step 2: Using a sharp object “pick” and locate front mounting point removing factory painted tape Figure 1. Install provided HTC 226 as shown Figure 2



Step 3: Remove first and second plug on outer panel Figure 3, Install provided HTC 226 as shown Figure 4 and attach front bracket support Figure 5. Do not tighten

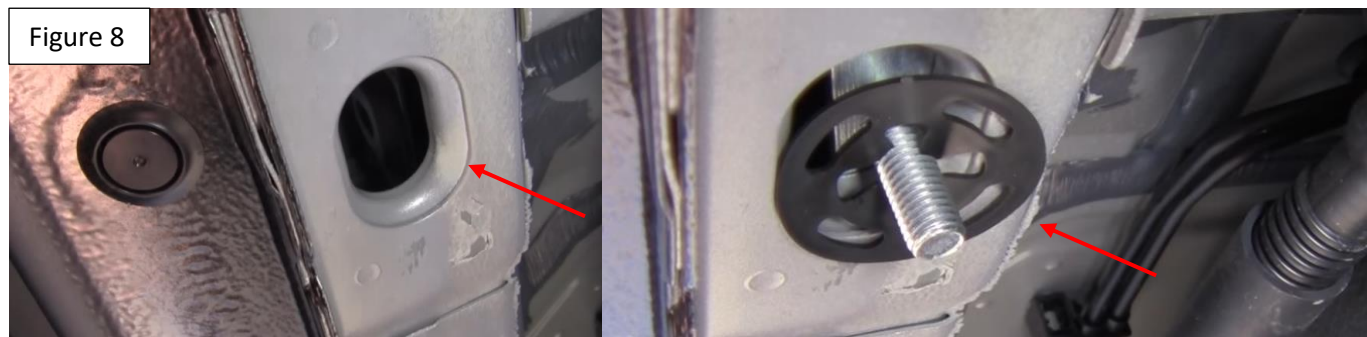


Step 4: Install front main bracket as shown on Figure 6. Attach main bracket to extra support using supplied M10 hardware Figure 7. Do not tighten

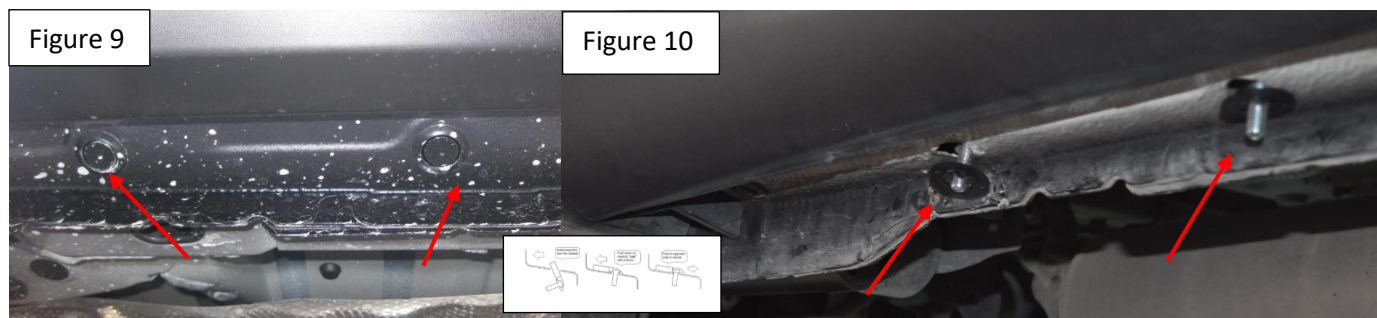


Installation Instructions 3927 / 6310 Bracket Kit

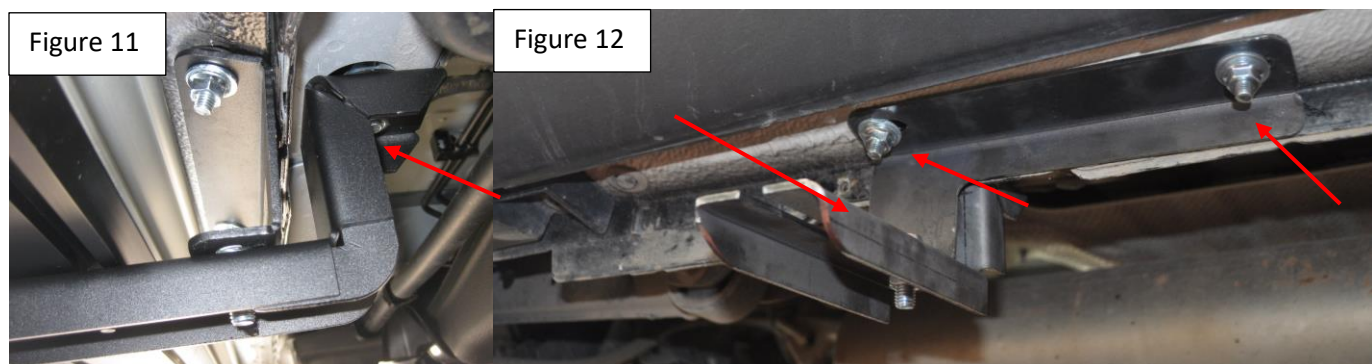
Step 5: Locate rear mounting area, Install provided HTC 230 as shown Figure 8



Step 6: Remove 2nd and 3rd to last rubber plugs as shown Figure 9. Install provided HTC 226 as shown Image 10.



Step 7: Install rear main bracket as shown Figure 11. Install rear support and attach to main bracket using supplied M10 hardware as shown Figure 12. Do not tighten

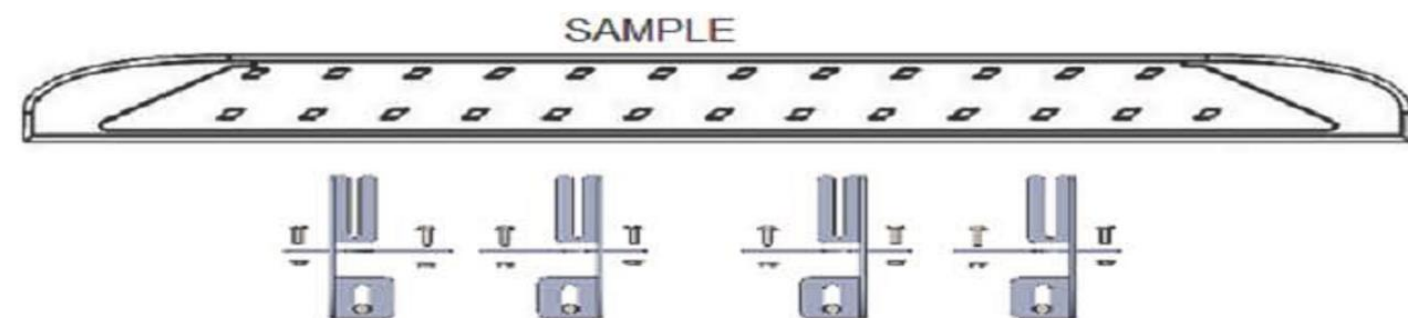


Step 8: Proceed to last page of this manual for running board install instructions and torque values

For Technical support please call our team at 1-866-717-6645 and one of our experts will assist you with this installation.

Thank you for choosing Romik.

Running Board Installation Instructions



RAL / RB2 / REC / RCV / RZR



ROB / ROF / RPD

- 1) Flip your Romik running boards onto a flat surface, make sure to place the running boards on a towel or cardboard in order to protect the surface Figure 1.
- 2) Loosen the M8 bolts on back of your running boards Figure 2. Depending on your model there will be either 6 or 8 bolts installed per side.
- 3) Once your brackets have been installed, place the running board onto the brackets as shown on Figure 3.
- 4) Adjust running boards, centering on vehicle. Hand tight M8 hardware on running boards.
- 5) Follow the torque procedures, torque M8 hardware to **7 ft-lbs** using a torque wrench.
- 6) Cleaning and maintaining your running boards is important, apply a light coat of a quality carnauba wax at least 2X per year. Wash often with mild soap and make sure to remove all soap residue. Many car automatic carwashes use a strong soap, make sure to use enough water to remove all residue.
- 7) Register your products at www.Romik.com/contact/productregistration
- 8) Warranty information at www.Romik.com/warranty