



Installation Instructions

REV 2 06/15/20

Part No. **4115**

Product: Running Boards

Application: **Volvo**

XC90 2015+

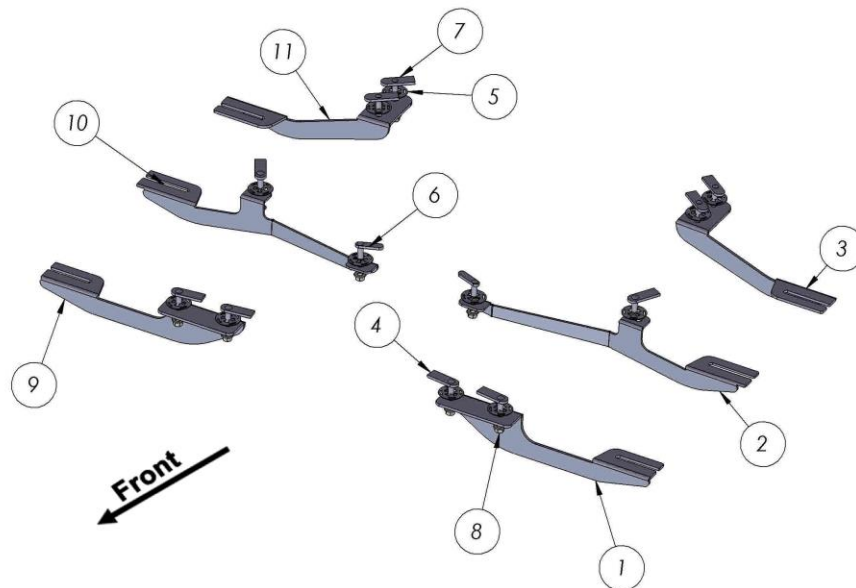
Level of Difficulty: 1 2 **3** 4 5

Installation Time: 90 Min

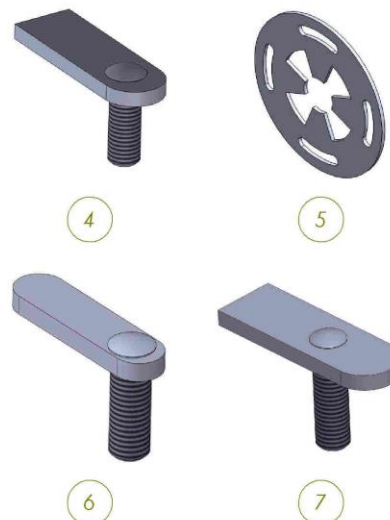
Hardware	Torque Specifications
M6 Bolt	3 ft-lbs.
M8 Bolt	7 ft-lbs.
M10 Bolt	16 ft-lbs.
M12 Bolt	28 ft-lbs.

ATTENTION: Use correct torque settings to avoid damaging the running boards and or mounting brackets. Failure to do so will void your warranty.

If you have any questions please contact our technical team at 1-866-717-6645



ITEM	PART NAME	QTY
1	4115850F0 DRIVER	1
2	4115850C0 DRIVER	1
3	4115850B0 DRIVER	1
4	HTC 230 - M10x25(5x20x60)	6
5	HTC 269 CLIPS (M10)	12
6	HTC 243 - M10x25(5x13x50)	2
7	HTC 238 - M10x30(5x20x60)	4
8	DIN 6923 FALANGE NUT M10	12
9	4115850F0 PASSENGER	1
10	4115850C0 PASSENGER	1
11	4115850B0 PASSENGER	1



Installation Instructions 4115 Bracket Kit

Video
Installation
Instruction:

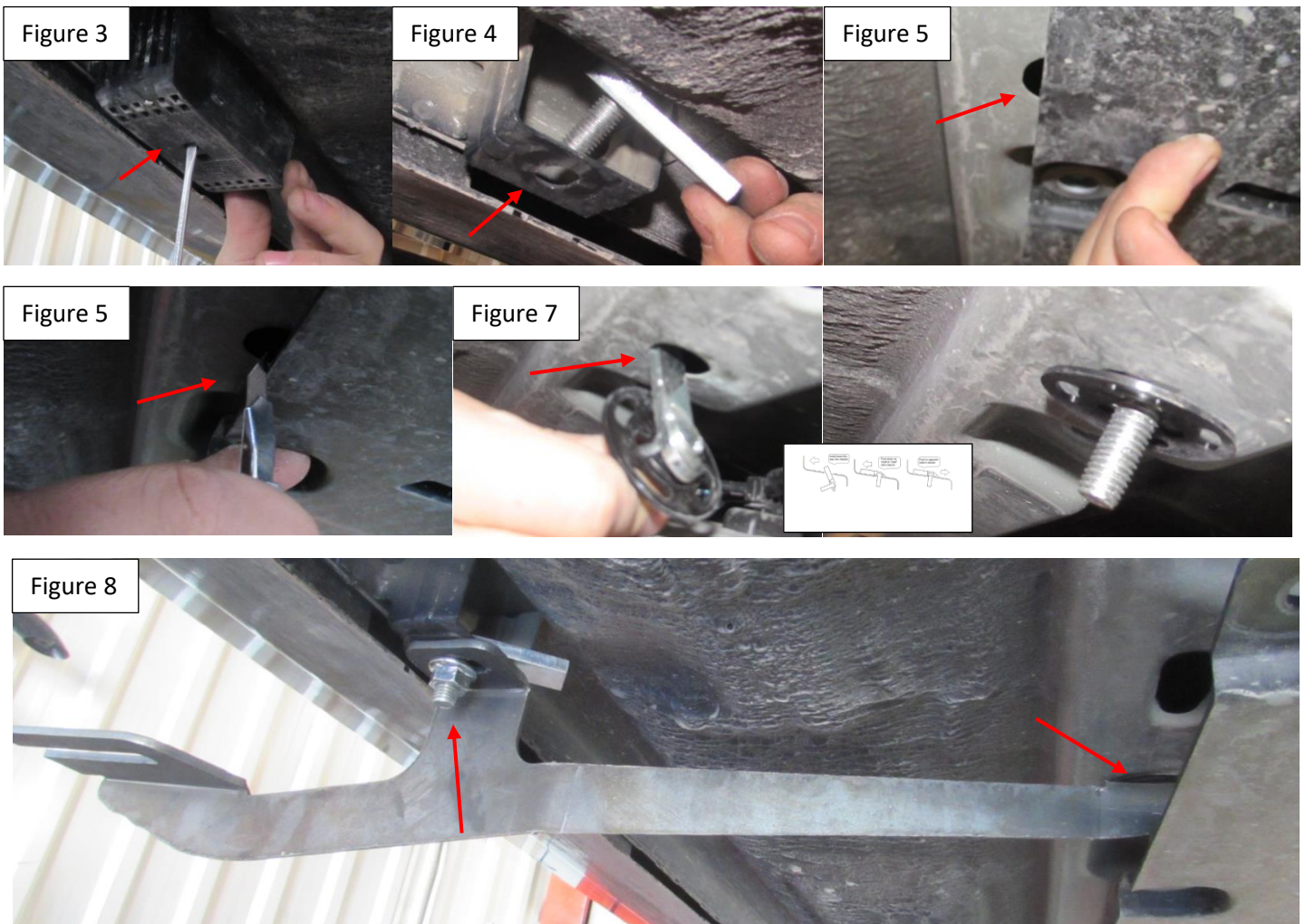
Note: Minor trimming of undercarriage plastic panel, removal of jack pad.

Step 1: Locate front mounting locations and hardware as per 1st page of this installation manual

Step 2: Install provided HTC 230 on front locations Figure 1. Attach front bracket Figure 2. Do not tighten

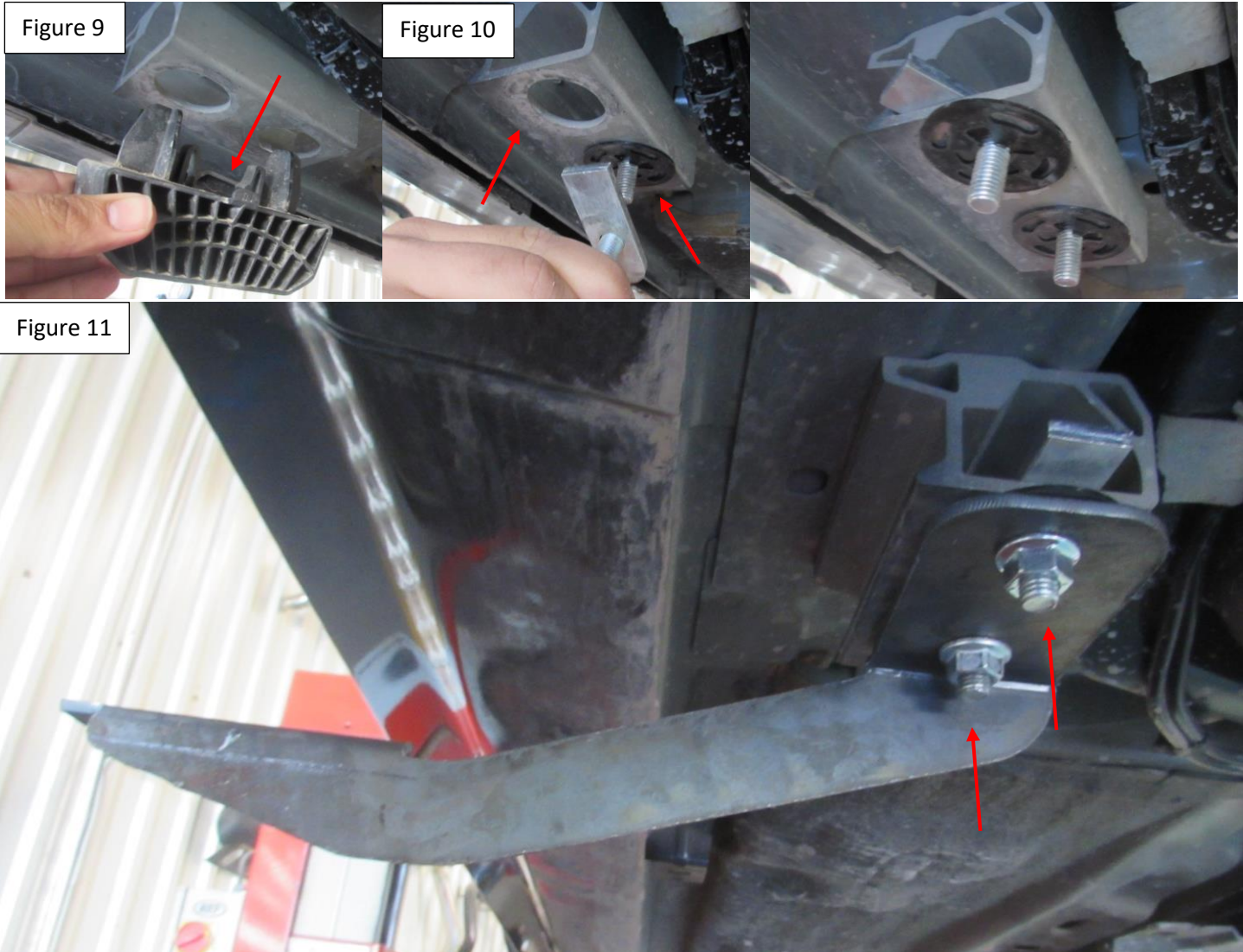


Step 3: Remove rubber pad as shown Figure 3. Install provided HTC 230 Figure 4. Using a utility knife remove material from inner position to expose entire hole. Install provided HTC 243 as shown Figure 7. Install center bracket as shown Figure 8. Do not tighten.



Installation Instructions 4115 Bracket Kit

Step 4: Remove rubber pad as shown Figure 9. Install provided HTC 230 Figure 10. Install rear bracket as shown Figure 11. Do not tighten.

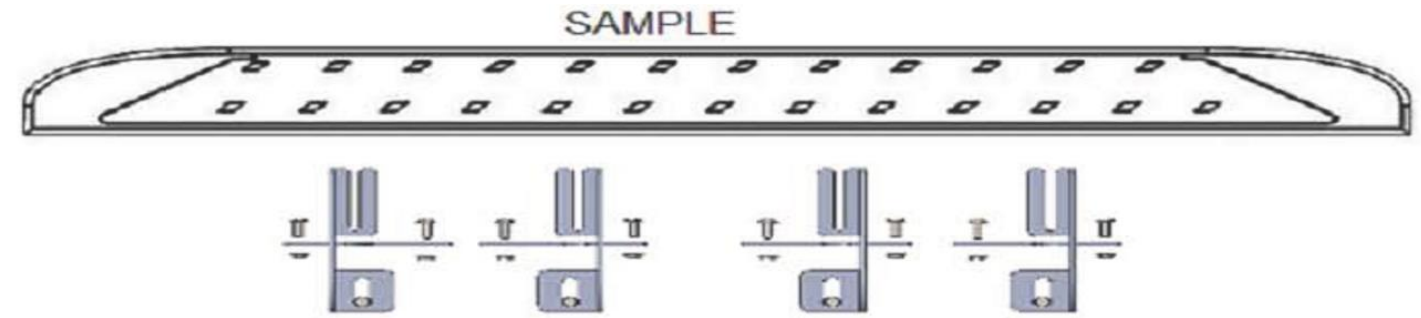


Step 5: Proceed to last page of this manual for running board install instructions and torque values.

For Technical support please call our team at 1-866-717-6645 and one of our experts will assist you with this installation.

Thank you for choosing Romik.

Running Board Installation Instructions



RAL / RB2 / REC / RCV / RZR



ROB / ROF / RPD

- 1) Flip your Romik running boards onto a flat surface, make sure to place the running boards on a towel or cardboard in order to protect the surface Figure 1.
- 2) Loosen the M8 bolts on back of your running boards Figure 2. Depending on your model there will be either 6 or 8 bolts installed per side.
- 3) Once your brackets have been installed, place the running board onto the brackets as shown on Figure 3.
- 4) Adjust running boards, centering on vehicle. Hand tight M8 hardware on running boards.
- 5) Follow the torque procedures, torque M8 hardware to **7 ft-lbs** using a torque wrench.
- 6) Cleaning and maintaining your running boards is important, apply a light coat of a quality carnauba wax at least 2X per year. Wash often with mild soap and make sure to remove all soap residue. Many car automatic carwashes use a strong soap, make sure to use enough water to remove all residue.
- 7) Register your products at www.Romik.com/contact/productregistration
- 8) Warranty information at www.Romik.com/warranty