



Installation Instructions

REV 2 12/15/20

Part No. **1434**

Product: Running Boards

Application:

Buick Enclave 2018+

Chev Traverse 2018+

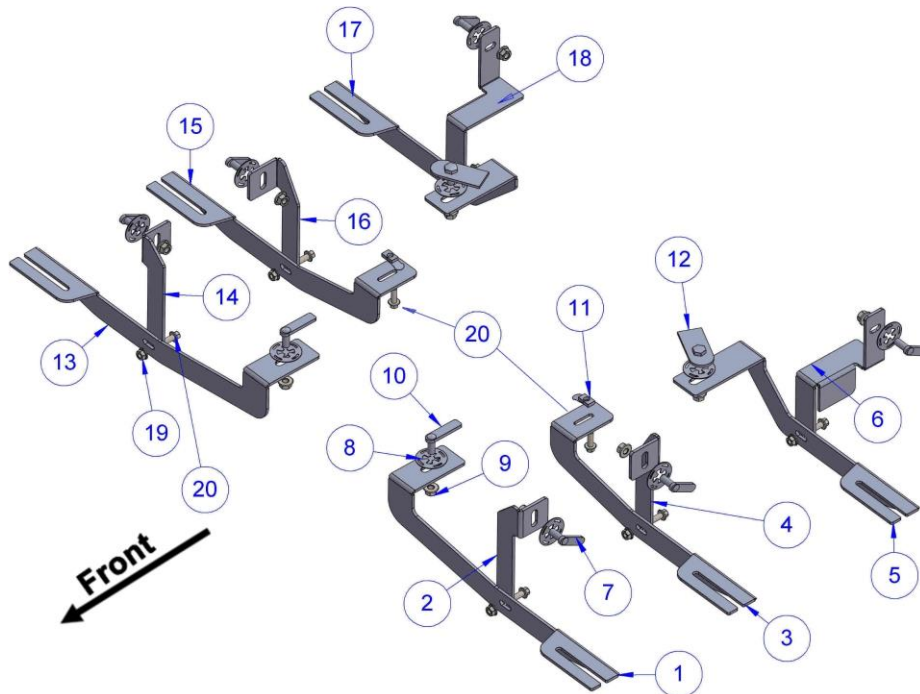
Level of Difficulty: 1 **2** 3 4 5

Installation Time: 90 min

Hardware	Torque Specifications
M6 Bolt	3 ft-lbs.
M8 Bolt	7 ft-lbs.
M10 Bolt	16 ft-lbs.
M12 Bolt	28 ft-lbs.

ATTENTION: Use correct torque settings to avoid damaging the running boards and or mounting brackets. Failure to do so will void your warranty.

If you have any questions please contact our technical team at 1-866-717-6645



ITEM NO	PART NUMBER	QTY.
1	1434850F0 Driver	1
2	1434850F1 Driver	1
3	1434850C0 Driver	1
4	1434850C1 Driver	1
5	1434850B0 Driver	1
6	1434850B1 Driver	1
7	HTC243-M10X25	6
8	HTC269 -CLIPS (M10)	10
9	M10 FLANGE NUT	10
10	HTC262-M10X30	2
11	HTC311-M8	2
12	HTC284-M10X25	2
13	MIRROR 1434850F0 Pas.	1
14	MIRROR 1434850F1 Pas.	1
15	MIRROR 1434850CO Pas.	1
16	MIRROR 1434850CO Pas.	1
17	MIRROR 1434850B0 Pas.	1
18	MIRROR 1434850B1 Pas.	1
19	M8 FLANGE NUT	6
20	M8X25 FLANGE BOLT	8

Installation Instructions 1434 Bracket Kit

NOTE: Due to the body design on this vehicle there is a visible gap. Please review images on www.Romik.com before installing.

Pre-assemble brackets before starting the installation. Note Front bracket is longer than middle bracket



Front Driver side

Middle Driver side

Rear Driver Side

Step 1: Locate front mounting locations and hardware as per 1st page of this installation manual

Step 2: Install provided HTC 263 as shown on Figure 1. Remove factory rubber plug as shown on Figure 2
Install provided HTC 243 as shown Figure 3.

Step 3: Install front bracket Figure 4. Do not tighten

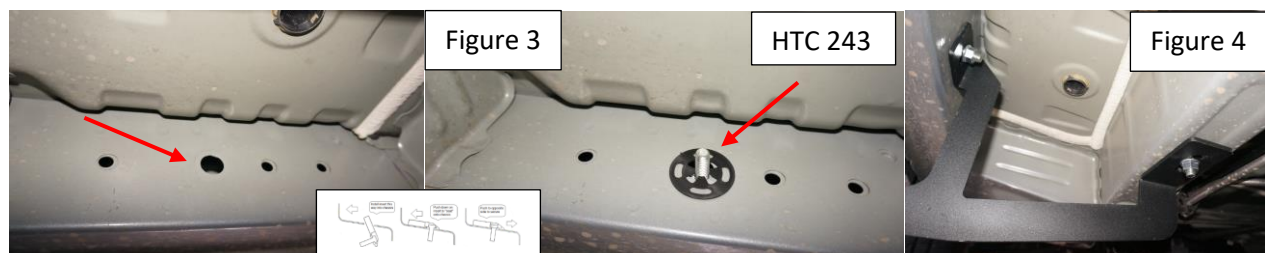
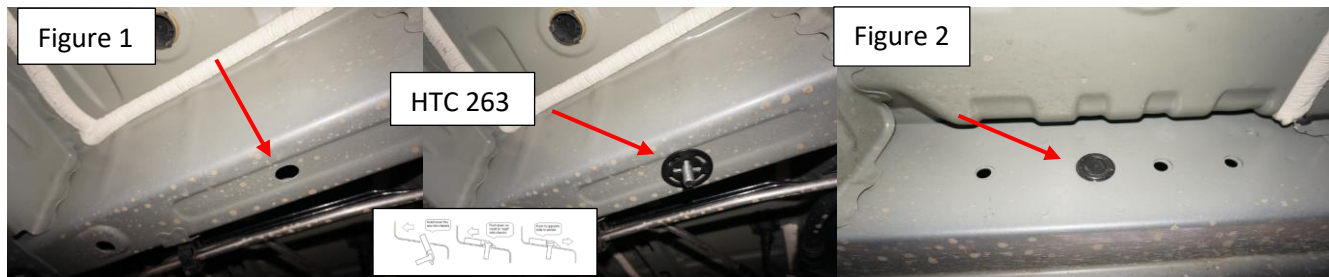


Image shows pass front bracket installed

Installation Instructions 1434 Bracket Kit

Step 4: Locate middle bracket position, Install provided HTC 311 as shown Figure 5, Remove factory rubber plug as shown Figure 6. Install provided HTC 243 Figure 7.

Step 5: Install middle bracket Figure 8. Do not tighten

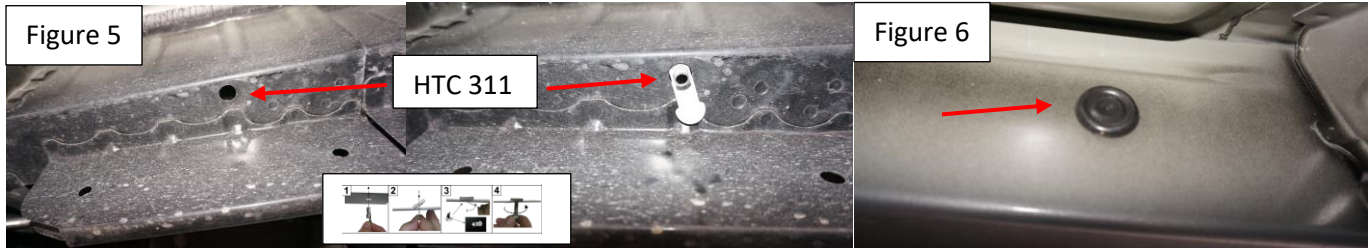


Image shows pass middle bracket installed

Installation Instructions 1434 Bracket Kit

Step 6: Locate rear bracket position Figure 8, Install provided HTC 284. Remove factory rubber plug Figure 9 and install provided HTC 243 Figure 10.

Step 7: Install rear bracket as show Figure 11 and 12 Do not tighten



Image shows pass rear bracket installed

Step 8: Proceed to last page of this manual for running board install instructions and torque values
For Technical support please call our team at 1-866-717-6645 and one of our experts will assist you with this installation.

Thank you for choosing Romik.

Running Board Installation Instructions

NOTE: Use of power tools will damage the bottom of the running board and void your warranty.



RAL / RB2 / REC / RCV / RZR



ROB / ROF / RPD

- 1) Flip your Romik running boards onto a flat surface, make sure to place the running boards on a towel or cardboard in order to protect the surface Figure 1.
- 2) Loosen the M8 bolts on back of your running boards Figure 2. Depending on your model there will be either 6 or 8 bolts installed per side.
- 3) Once your brackets have been installed, place the running board onto the brackets as shown on Figure 3.
- 4) Adjust running boards, centering on vehicle. Hand tight M8 hardware on running boards.
- 5) Follow the torque procedures, torque M8 hardware to **7 ft-lbs** using a torque wrench.
- 6) Cleaning and maintaining your running boards is important, apply a light coat of a quality carnauba wax at least 2X per year. Wash often with mild soap and make sure to remove all soap residue. Many car automatic carwashes use a strong soap, make sure to use enough water to remove all residue.
- 7) Register your products at <https://romik.com/productregistration>
- 8) Warranty information at www.Romik.com/warranty