



Installation Instructions

REV 2 03/09/20

Part No. **2221**

Product: Running Boards

Application:

Honda CRV 2017+

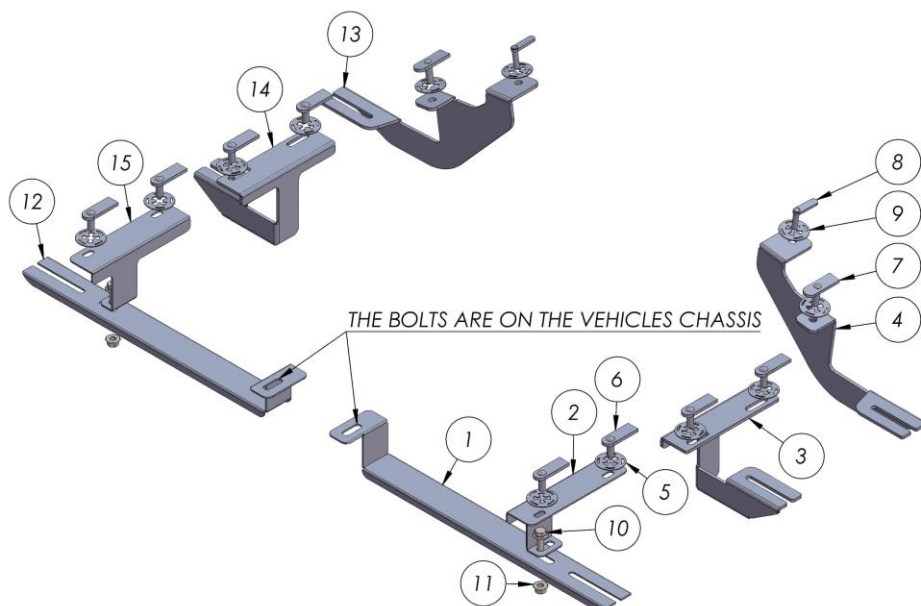
Level of Difficulty: 1 **2** 3 4 5

Installation Time: 60 Min

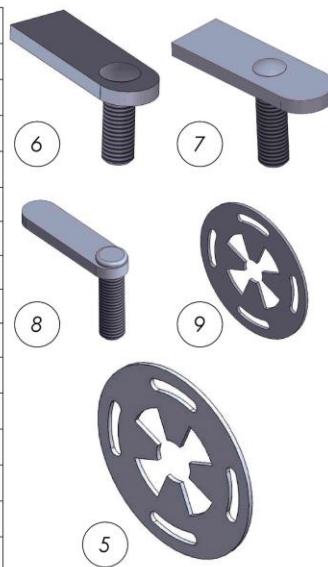
Hardware	Torque Specifications
M6 Bolt	3 ft-lbs.
M8 Bolt	7 ft-lbs.
M10 Bolt	16 ft-lbs.
M12 Bolt	28 ft-lbs.

ATTENTION: Use correct torque settings to avoid damaging the running boards and or mounting brackets. Failure to do so will void your warranty.

If you have any questions please contact our technical team at 1-866-717-6645



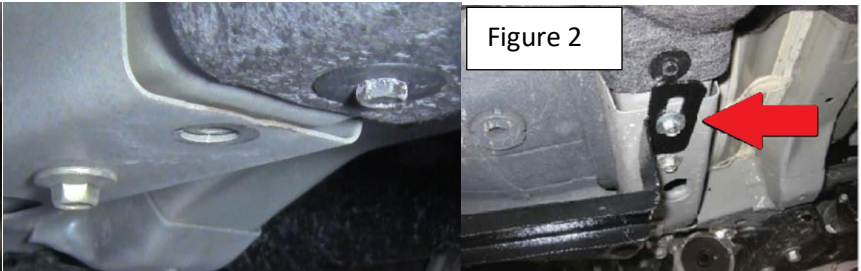
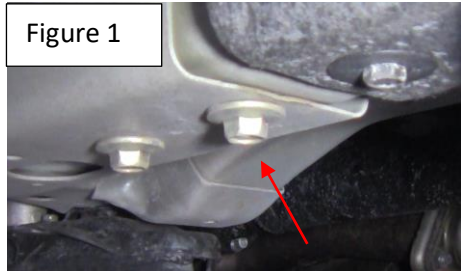
ITEM/NO	PART NAME	QTY
1	2221850F0 DRIVER	1
2	2221850F1 DRIVER	1
3	2221850C0 DRIVER	1
4	2221850B0 DRIVER	1
5	HTC 269 - CLIPS (M10)	10
6	HTC 230 - M10x25	8
7	HTC 238 - M10x25(4x20x60)	2
8	HTC 226 - M8X30 (4X10X37)	2
9	HTC 271 - CLIPS (M8)	2
10	DIN 6921 FLANGE BOLT - M10 x 25	2
11	DIN 6923 FLANGE NUT - M10	2
12	2221850F0 PASSENGER	1
13	2221850B0 PASSENGER	1
14	2221850C0 PASSENGER	1
15	2221850F1 PASSENGER	1



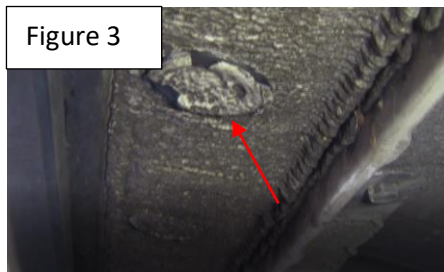
Installation Instructions 2221 Bracket Kit

Step 1: Locate front mounting locations and hardware as per 1st page of this installation manual

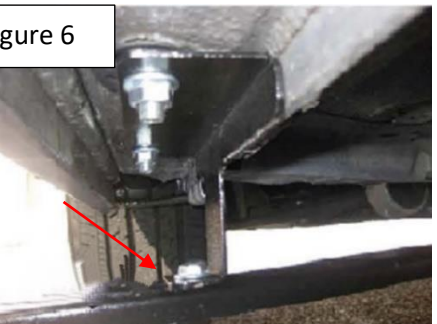
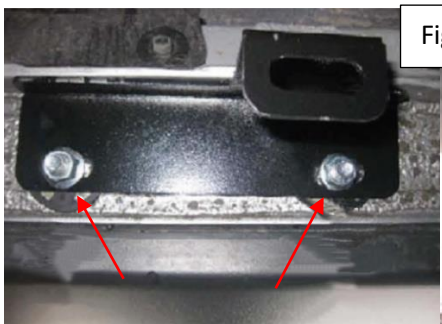
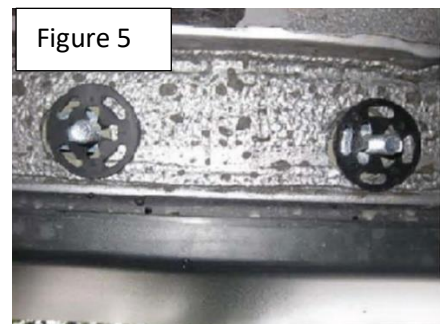
Step 2: Remove factory front bolt as shown on Figure 1. Do not discard as it is used to install main bracket. Install main bracket as shown Figure 2. Do not tighten



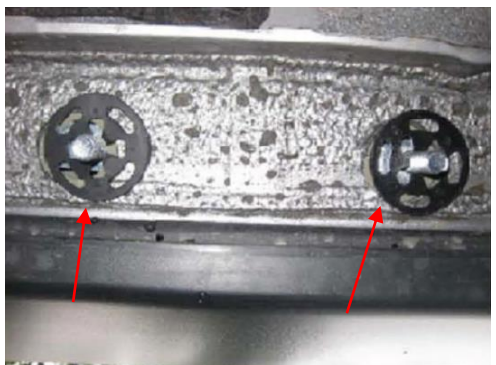
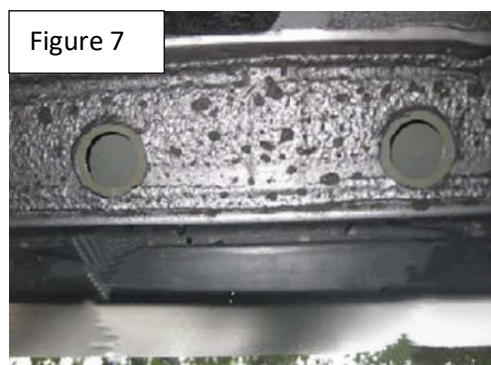
Step 3: Remove factory rubber plugs inline with main bracket shown on Figure 3. Install provided HTC 230 As shown on Figure 4.



Step 4: Install extra support bracket as shown in Figure 5. Attach extra support to main bracket using supplied M10 hardware Figure 6. Do not tighten



Step 5: Remove factory plugs to install middle bracket. Note plugs are directly between the front door and rear door. Install provided HTC 230 Please see Figure 7. Install middle bracket but do not tighten Figure 8.



Installation Instructions 2221 Bracket Kit

Figure 8



Step 6: Locate rear mounting area and install provided HTC 226 on inner most Figure 9 and HTC 238 on outer most position Figure 10. Install rear bracket as show Figure 11 Do not tighten

Figure 9

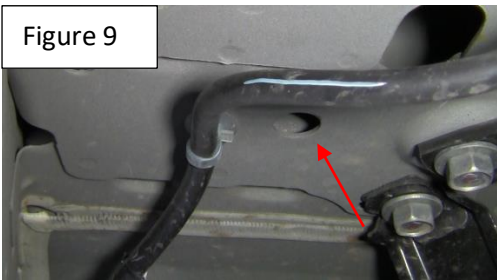


Figure 10

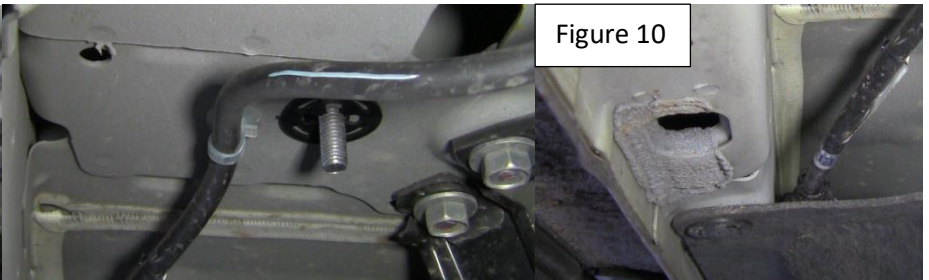
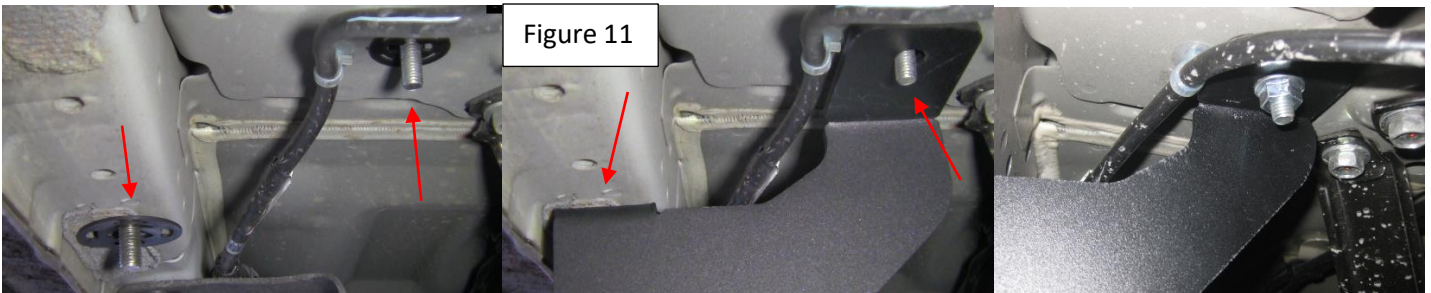


Figure 11



Step 7: Proceed to last page of this manual for running board install instructions and torque values

For Technical support please call our team at 1-866-717-6645 and one of our experts will assist you with this installation.

Thank you for choosing Romik

Running Board Installation Instructions

NOTE: Use of power tools will damage the bottom of the running board and void your warranty.



RAL / RB2 / REC / RCV / RZR



ROB / ROF / RPD

- 1) Flip your Romik running boards onto a flat surface, make sure to place the running boards on a towel or cardboard in order to protect the surface Figure 1.
- 2) Loosen the M8 bolts on back of your running boards Figure 2. Depending on your model there will be either 6 or 8 bolts installed per side.
- 3) Once your brackets have been installed, place the running board onto the brackets as shown on Figure 3.
- 4) Adjust running boards, centering on vehicle. Hand tight M8 hardware on running boards.
- 5) Follow the torque procedures, torque M8 hardware to **7 ft-lbs** using a torque wrench.
- 6) Cleaning and maintaining your running boards is important, apply a light coat of a quality carnauba wax at least 2X per year. Wash often with mild soap and make sure to remove all soap residue. Many car automatic carwashes use a strong soap, make sure to use enough water to remove all residue.
- 7) Register your products at <https://romik.com/productregistration>
- 8) Warranty information at www.Romik.com/warranty