



## Installation Instructions

Part No. **1619**

Product: Running Boards

Application: **RAM ProMaster 2014 – Present**  
**136 & 159 models only.**

Level of Difficulty: 1 2 3 **4** 5

Installation Time: 120 Min.

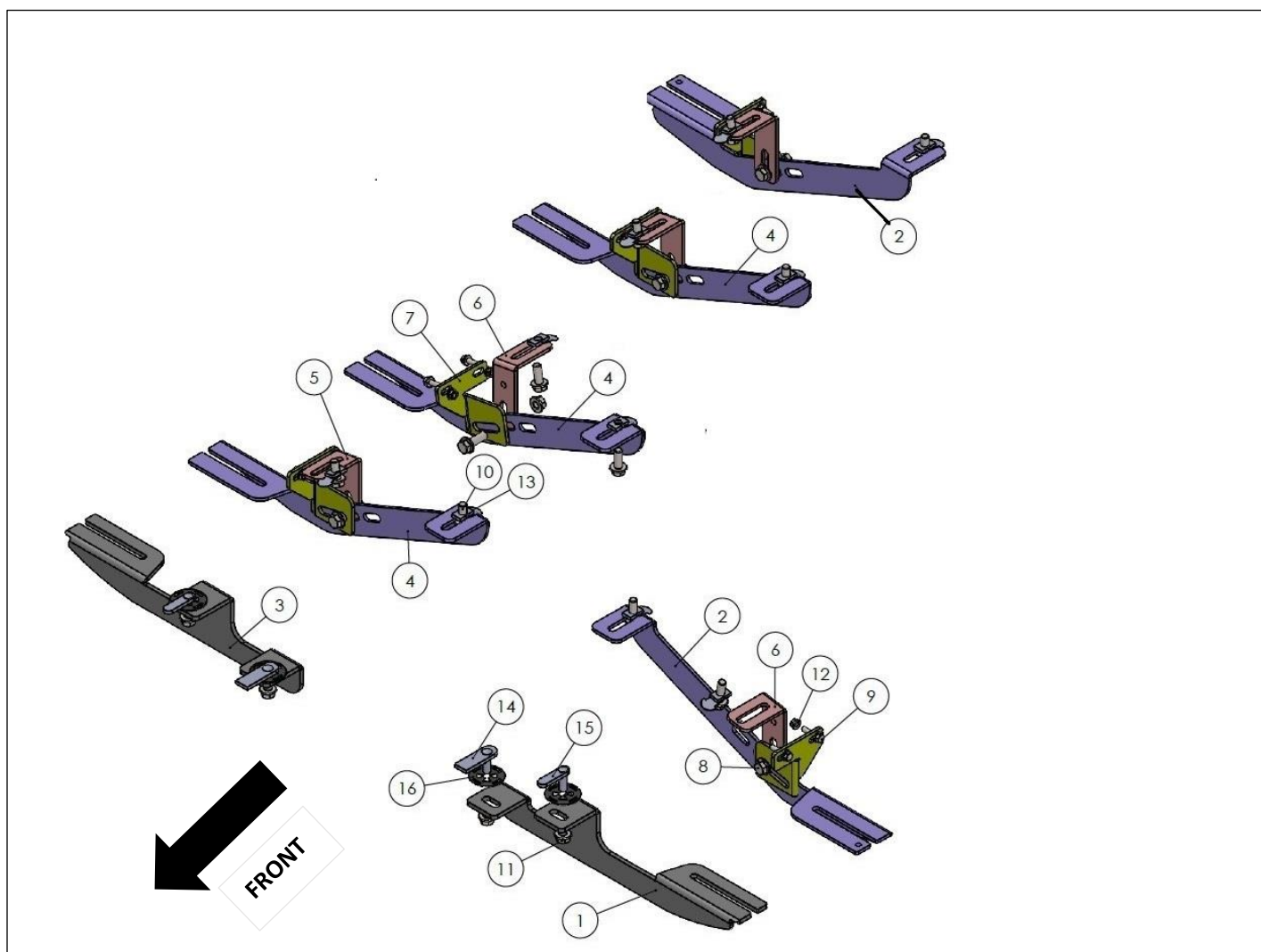
REV 8 03/15/25

Hardware	Torque Aluminum	Torque Steel to Steel
M6 Bolt	3 ft-lbs.	14 ft-lbs.
M8 Bolt	7 ft-lbs.	35 ft-lbs.
M10 Bolt	16 ft-lbs.	64 ft-lbs.
M12 Bolt	28 ft-lbs.	112 ft-lbs.

**ATTENTION:** Use correct torque settings to avoid damaging the running boards and or mounting brackets. Failure to do so will void your warranty. If you have any questions, please contact our technical team at 1-866-717-6645

Attention: Please make sure that you have the latest instructions  
from *Romik.com*

QR Scan



# 1619

1



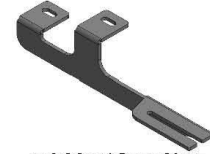
**DRIVER SIDE  
FO BRACKET  
1 x QTY**

2



**DRIVER/PASSENGER SIDE  
BRACKET-1  
2 x QTY**

3



**PASSENGER SIDE  
FO BRACKET  
1 x QTY**

4



**PASSENGER SIDE  
BRACKET-1  
3 x QTY**

5



**PASSENGER SIDE  
BRACKET-2  
3 x QTY**

6



**DRIVER/PASSENGER SIDE  
BRACKET-2  
2 x QTY**

7



**DRIVER/PASSENGER SIDE  
BRACKET-3  
5 x QTY**



**2 x QTY**



**7 QT Plates  
14 Carriage bolts  
14 M8 nuts  
14 HTC 271**

## HARDWARE

8



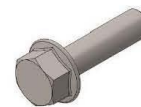
**M10x30 –  
FLANGE BOLT  
5x**

9



**M6x25 –  
FLANGE BOLT  
10x**

10



**M10x25 –  
FLANGE BOLT  
10x**

11



**M10 –  
FLANGE NUT  
9x**

12



**M6 –  
FLANGE NUT  
10x**

13



**HTC 325 – M10  
(23,4x1,8x4)**

14



**HTC 230 M10x25  
(5x20x60)  
2x**

15



**HTC 243 M10x25  
(4x12x50)  
2x**

16



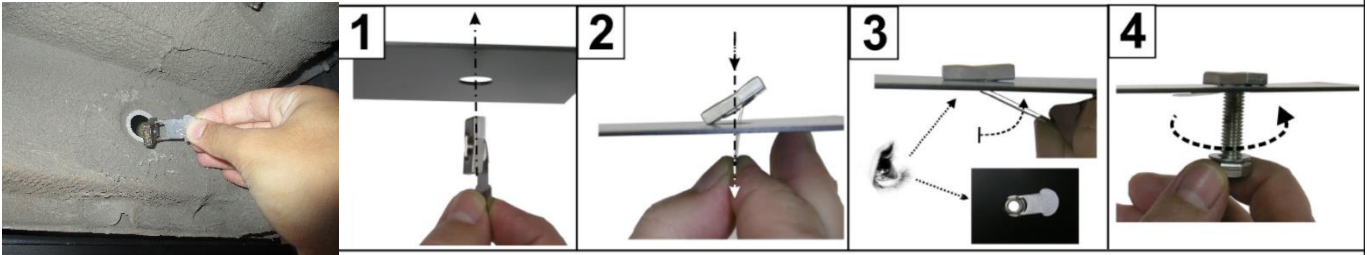
**HTC 269  
CLIPS M10  
4x**

# Installation Instructions 1619 Bracket Kit

**Important Install Tip:** When installing Romik HTC inserts. Test by tugging on it before installing bracket.

Blue loctite is highly recommended.

Make sure the HTC is seated correctly and do not use power tools as this will only spin the insert and possibly damage it.



**Step 1: Install** supplied HTC230 #14 and HTC 243 #15 as shown on figure 1. Attach the main front bracket but do not tighten.



**Step 2: Pre-assemble** Driver's rear bracket #2 as shown Figure 2 Install supplied M10 HTC 325 as shown Figure 3. This bracket sits at 35 inches from the front.

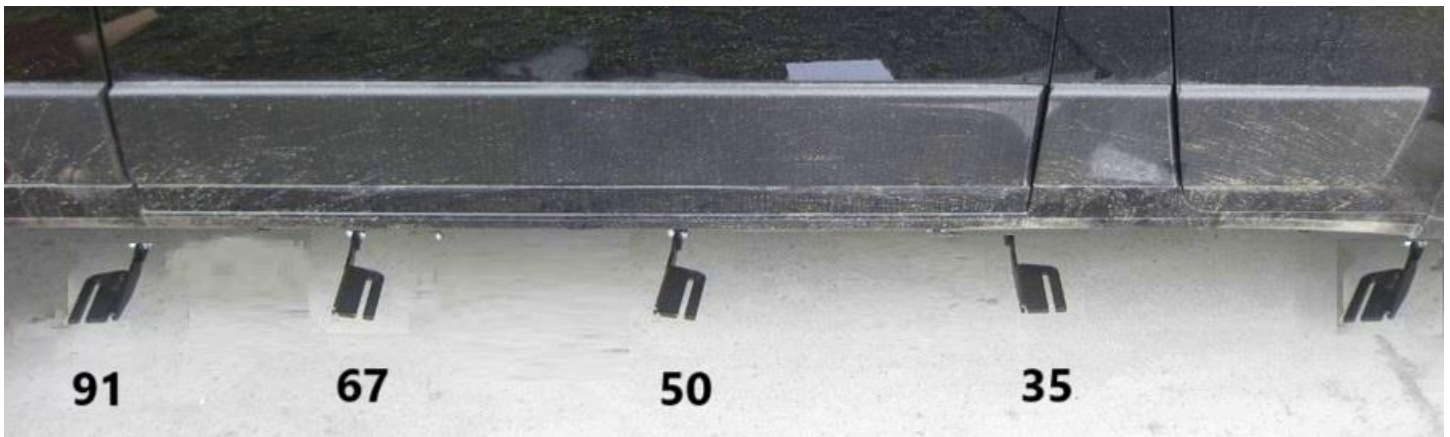


**Step 3: Install** bracket using supplied M10 bolts Figure 4. **Optional:** For heavy commercial use Included extra support brackets #7 that require drilling. Using the support bracket as a template place it against the pinch weld at its highest position and drill 2 15/64 holes install with provided M6 hardware #8 and #9. Snug all hardware. Repeat step 1 and 2 on the passenger side.

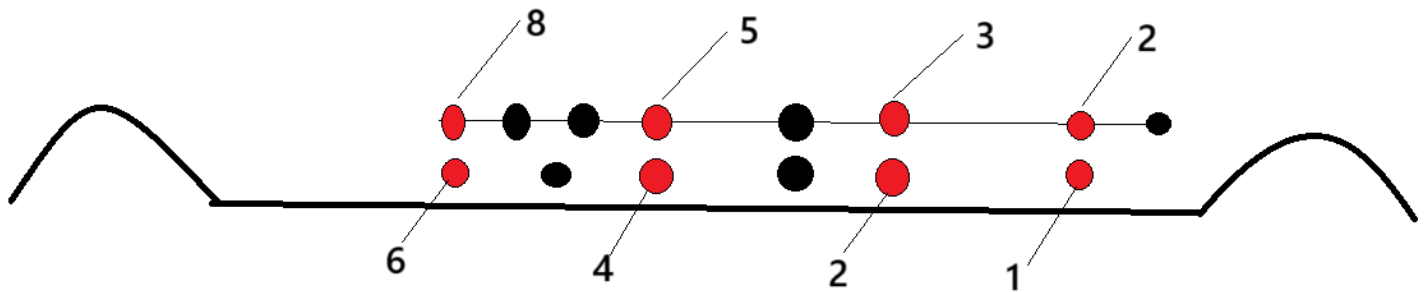


# Installation Instructions 1619 Bracket Kit

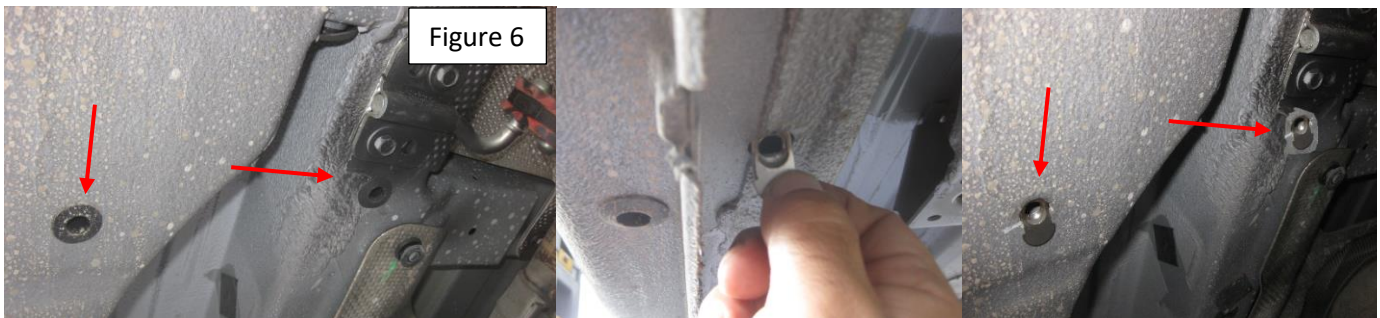
## Passenger Side note bracket positioning (Long wheel base shown)



Remover bottom rubber plugs 2, 3, 5 and 8 are inner plugs.



**Step 4:** Locate and remove rubber plugs from the first mounting location approx. 35 inches from the front mudflap area. Install provided HTC 325 as shown in Figure 6.





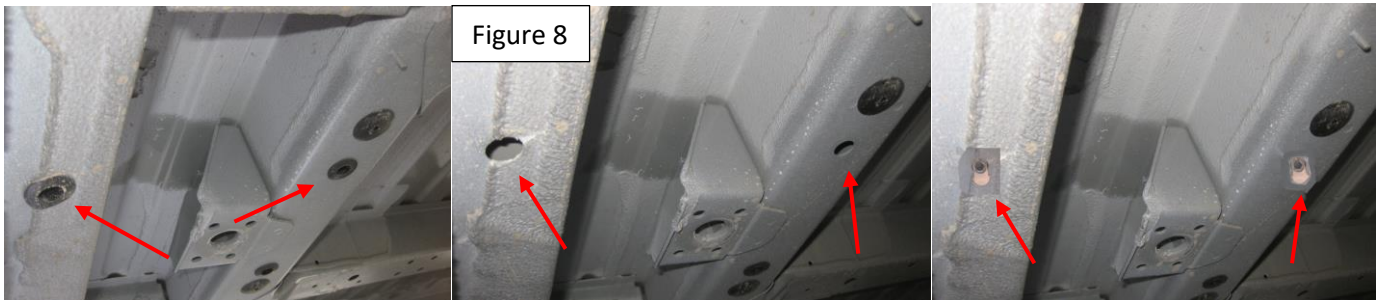
# Installation Instructions 1619 Bracket Kit

**Step 3:** Install bracket #4 and support bracket #6 as shown on Figure 7 snug but do not tighten. mounting location approx. 50 inches from the front mudflap area. Optional: For heavy commercial use use Included extra support brackets that require drilling. Using the support bracket as a template place it against the pinch weld at its highest position and drill 2 15/64 holes install with provided M6 hardware #8 and #9. Snug all the hardware.

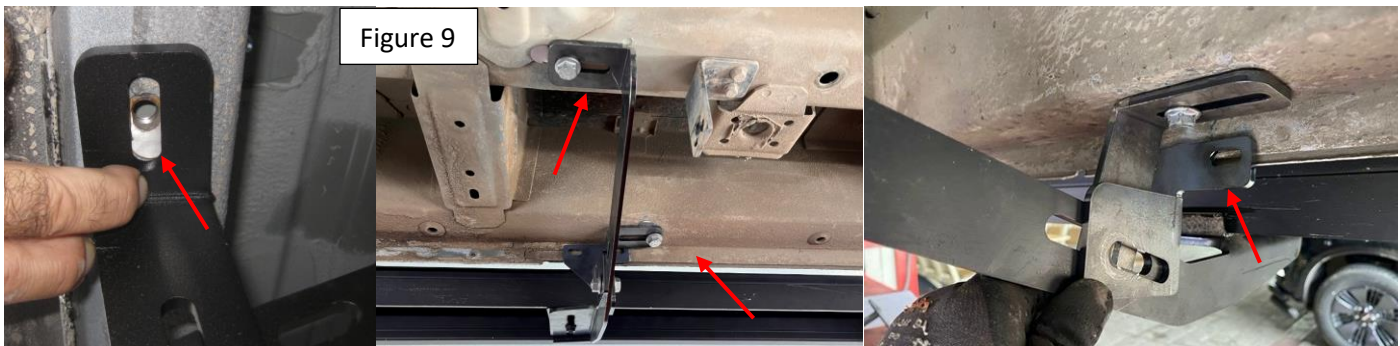


159 Inch wheelbase bracket position shown for 136 WB reverse rear bracket and middle bracket

**Step 4:** Locate and remove rubber plugs as per diagram. Install provided HTC 325 as shown in Figure 8.

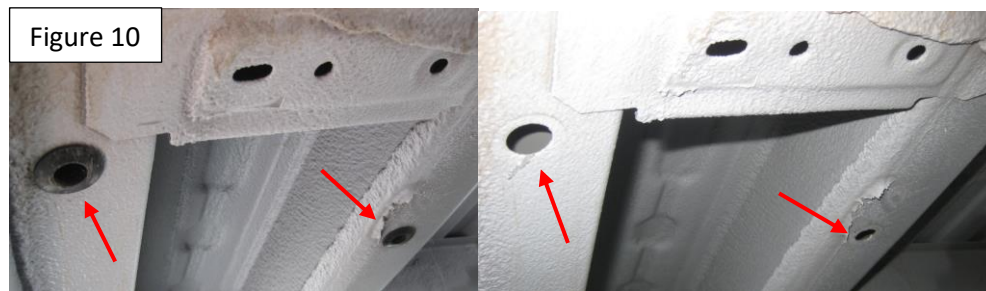


**Step 5:** Install main bracket #4 and support bracket #5 as shown on Figure 9 snug but do not tighten. Mounting location approx. 67 inches from the front mudflap area. For heavy commercial use Included extra support brackets that require drilling. Using the support bracket as a template place it against the pinch weld at its highest position and drill 2 15/64 holes install with provided M6 hardware #8 and #9. Snug all the hardware.

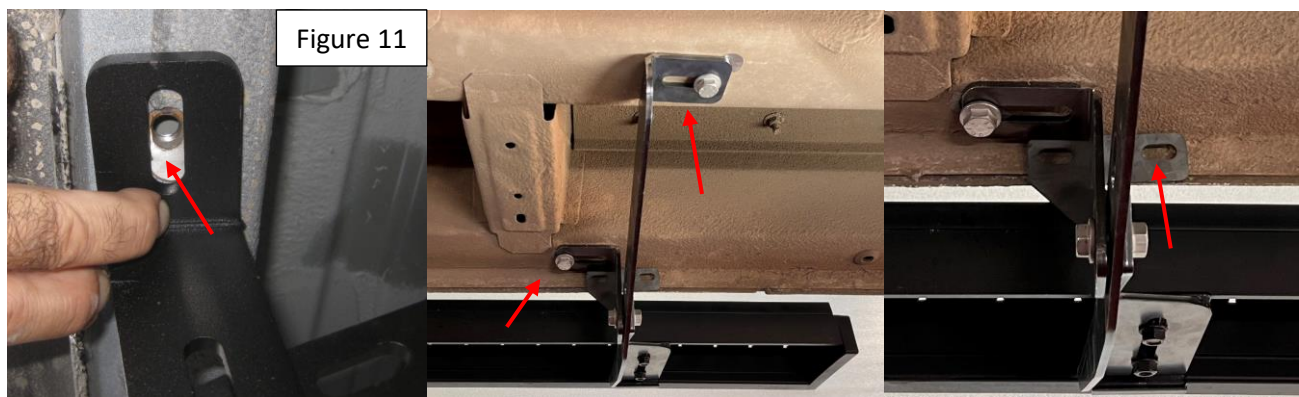


# Installation Instructions 1619 Bracket Kit

**Step 5** Locate and remove rubber plugs as per diagram. Install provided HTC 325 as shown Figure 10.



**Step 6:** Install main bracket #2 and support bracket #5 as shown on Figure 11 snug but do not tighten. Mounting location approx. 91 inches from the front mudflap area. For heavy commercial use Included extra support brackets that require drilling. Using the support bracket as a template place it against the pinch weld at its highest position and drill 2 15/64 holes install with provided M6 hardware #8 and #9. Snug all the hardware.



**Step 7:** Torque hardware to specs. 10 mm hardware to 64 ft. lbs. 8 mm hardware to 35 ft. lbs. and 6 mm hardware to 14 ft. lbs. Recheck hardware after 1,000 miles of use.

**Step 8:** Once all the brackets are installed proceed and assemble the Romik “connect” running boards. See the next page for detailed instructions. Place the boards on the brackets and tighten them to our torque specs. NOTE: if necessary, use a level to make sure the running boards are properly installed

For Technical support please call our team at 1-866-717-6645 and one of our experts will assist you with this installation.

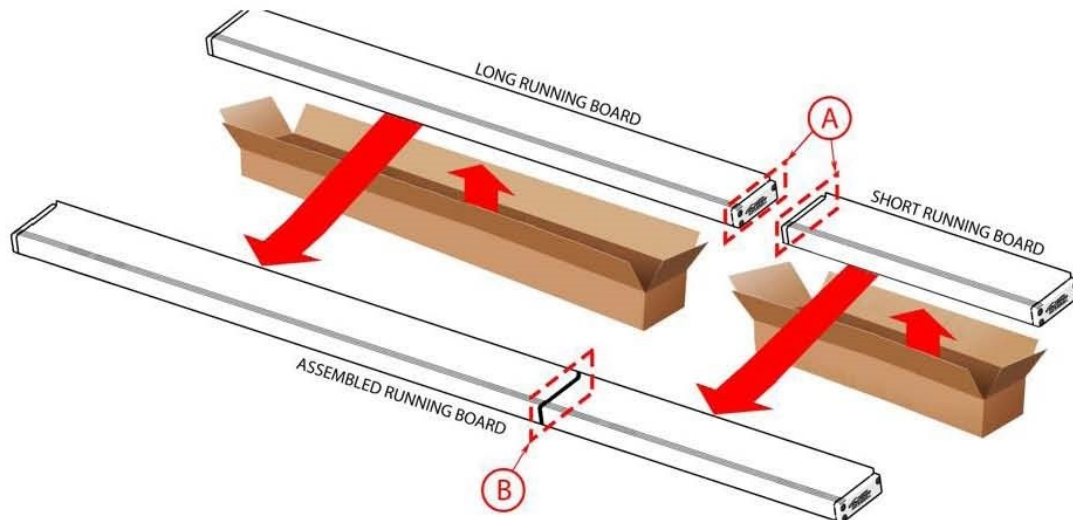
**Thank you for choosing Romik.**



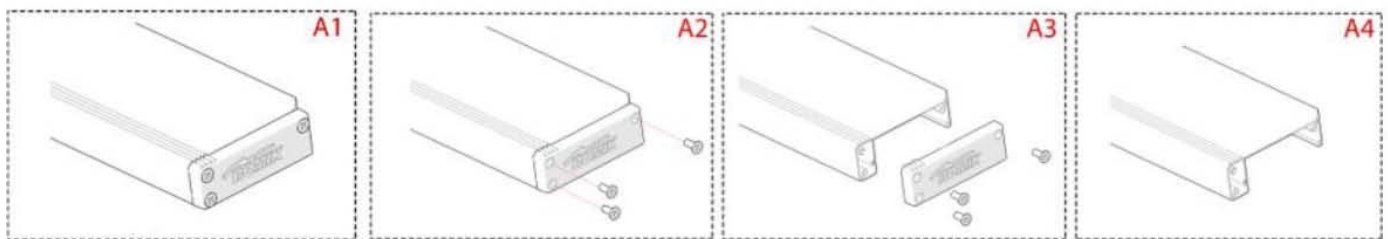
# ROF / ROB / RPD 2 PC Romik Connect instructions

Please follow these steps to successfully “join” the 2 PC running boards together.

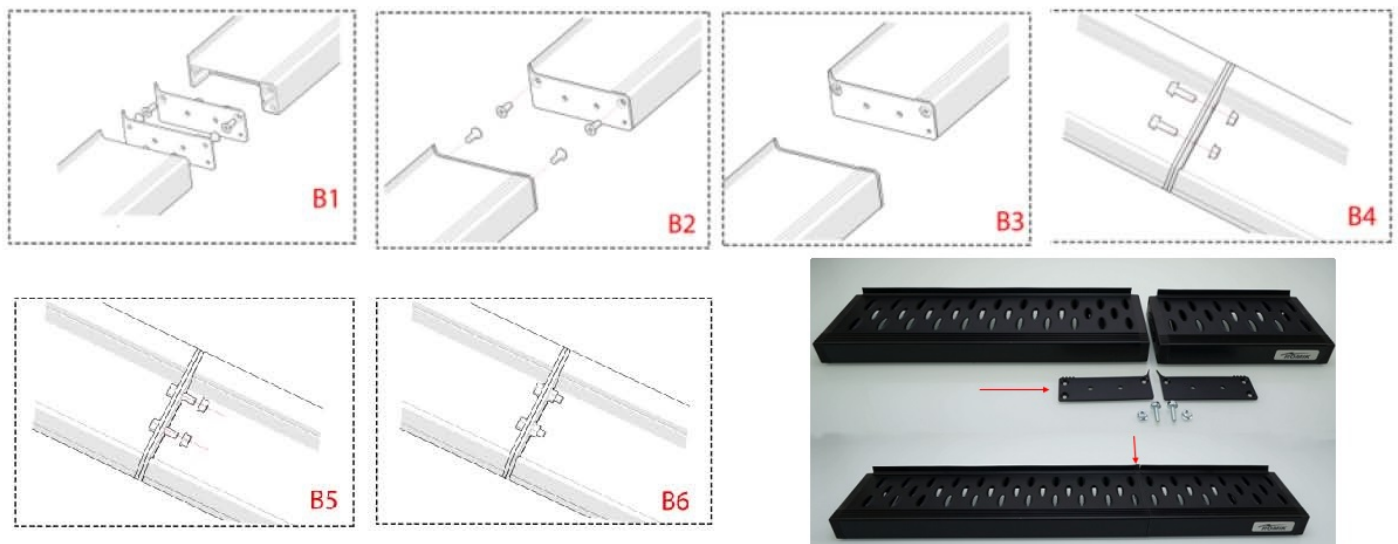
Step 1: Remove products from box and placed on a soft surface to avoid scratching.



Step 2: Remove plastic endcap as shown on Figure A1 – A4 keep screws as they will be re-used.



Step 3: Remove Romik Connect plate and assemble as show on Figure B1 – B3 using original screws. Join two running boards together using supplied M8 bolts torque to 7 ft lbs.



Step 4: Install running boards as per last page of this manual.

# Installation Instructions Running Boards

**NOTE: Use of power tools will damage the bottom of the running board and void your warranty.**

Step 1: loosen the M8 hardware on back of the running boards.

Step 2: Slide running board onto brackets

Step 3: Tighten hardware to 7 ft lbs.

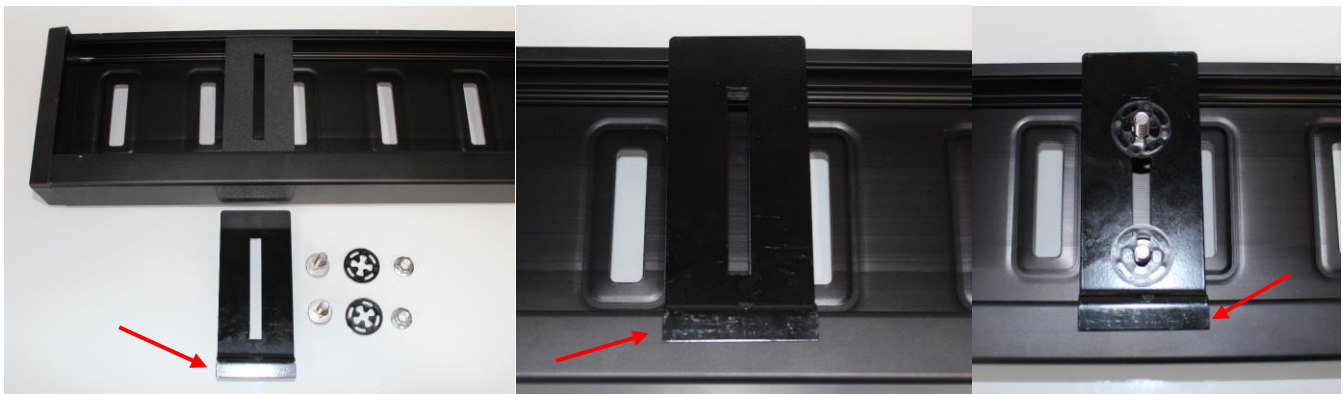


## ROF/RPD/ROB Running boards

Step 1: Place clamping plate on top of running board as shown below. Make sure clamping plate sits correctly on running board surface.

Step 2: Install carriage bolts and plastic retaining clips as shown below.

Step 3: Install and tighten hardware to 7 ft lbs.



## Product Registration and Warranty Information

- Register your Romik products at <https://romik.com/productregistration>
- Warranty information at <http://www.romik.com/warranty>



## Cleaning and maintaining your Romik Running boards

Cleaning and maintaining your running boards is important, apply a light coat of a quality carnauba wax at least 2X per year. Wash often with mild soap and make sure to remove all soap residue. Many car automatic carwashes use a strong soap, make sure to use enough water to remove all residue.

For video instructions on how to clean your Romik products please click here <https://romik.com/cleaning>