



## Installation Instructions

REV 3 01/14/20

Part No. **5811**

Product: Running Boards

Application:

**Cadillac XT5 2017+**

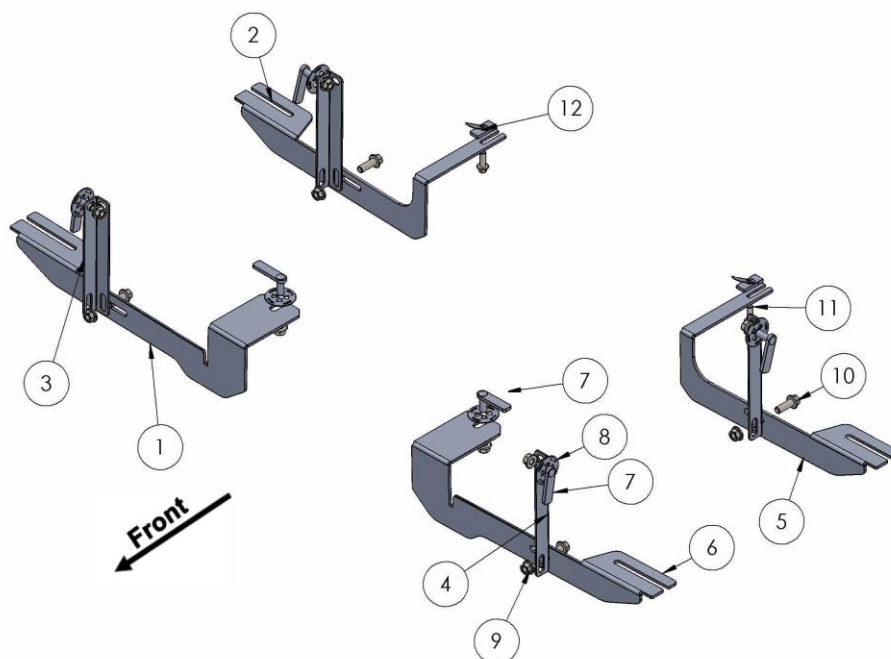
Level of Difficulty: 1 **2** 3 4 5

Installation Time: 60 Min

Hardware	Torque Specifications
M6 Bolt	3 ft-lbs.
M8 Bolt	7 ft-lbs.
M10 Bolt	16 ft-lbs.
M12 Bolt	28 ft-lbs.

**ATTENTION:** Use correct torque settings to avoid damaging the running boards and or mounting brackets. Failure to do so will void your warranty.

If you have any questions please contact our technical team at 1-866-717-6645



ITEM	PART NAME	QTY
1	5811850F0 PASSENGER	1
2	5811850B0 PASSENGER	1
3	5811850FB1 PASSENGER	2
4	5811850FB1 DRIVER	2
5	5811850B0 DRIVER	1
6	5811850F0 DRIVER	1
7	HTC 243 - M10x25(4x12x50)	6
8	HTC 269 CLIPS (M10)	6
9	DIN 6923 FLANGE NUT M10	10
10	DIN 6921 FLANGE BOLT M10 x 30	4
11	DIN 6921 FLANGE BOLT M8 x 25	2
12	HTC 295 M8 SPECIAL NUT	2



# Installation Instructions 5810 Bracket Kit

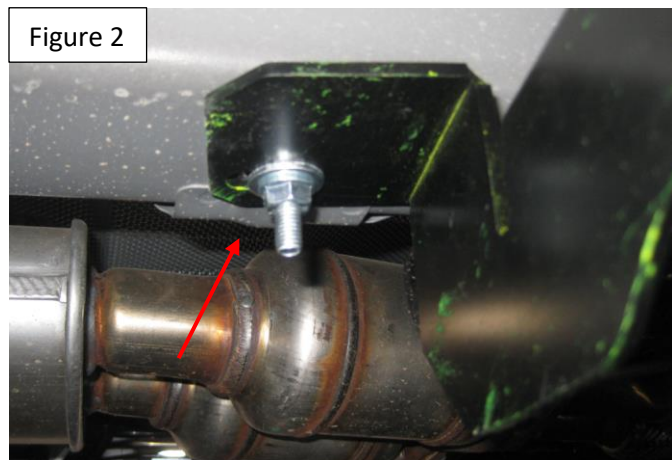
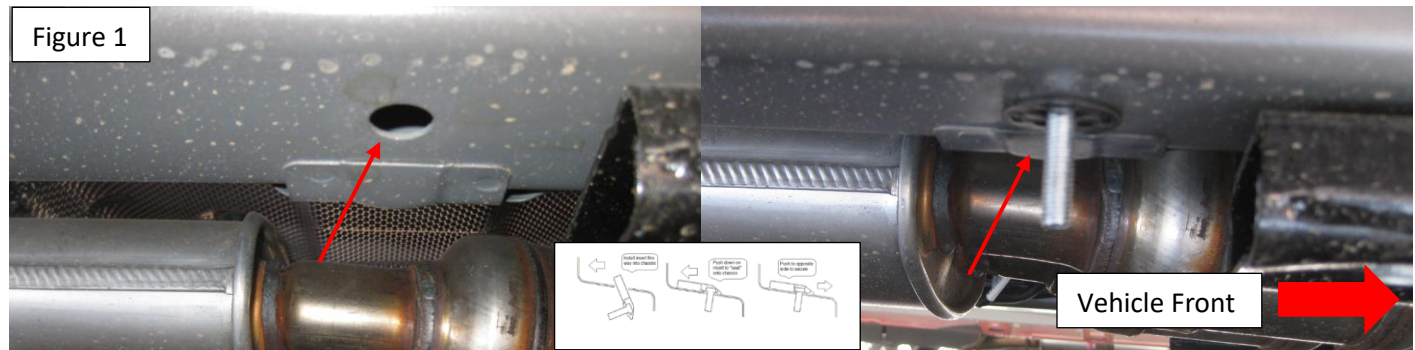
Video  
Installation  
Instruction:



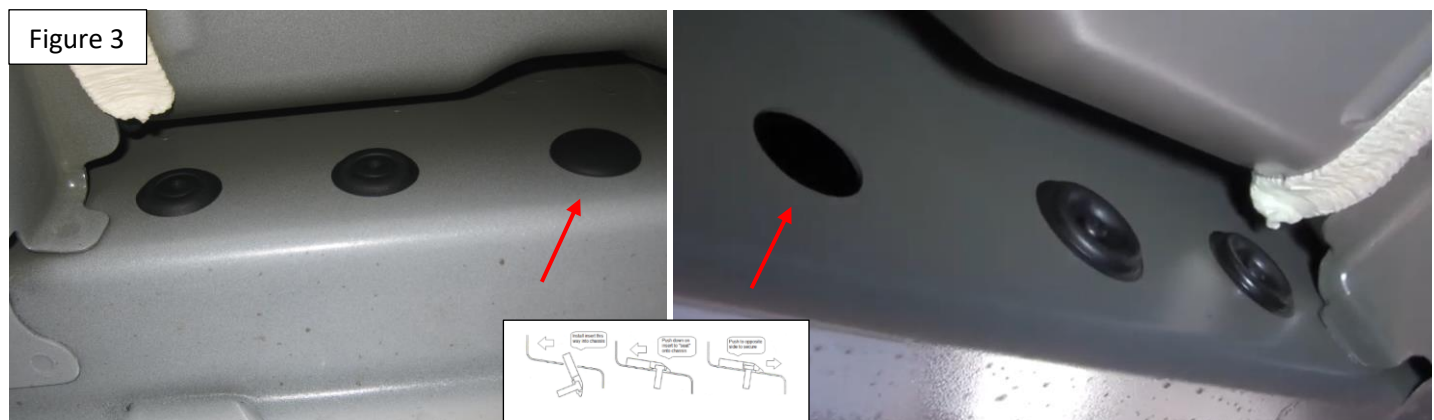
**Note:** Use of a level is recommended to adjust height.

**Step 1:** Locate front mounting locations and hardware as per 1<sup>st</sup> page of this installation manual

**Step 2:** Install provided HTC 243 as shown on Figure 1, attach main front bracket and use as guide to locate front extra support position Figure 2. Do not tighten



**Step 3:** Using front bracket as guide locate and remove front rubber plug Figure 3 install provided HTC 262 Figure 4



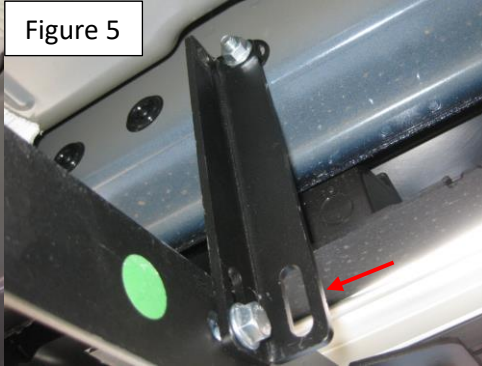
# Installation Instructions 5810 Bracket Kit

**Step 4:** Install extra support using provided M10 hardware, make sure the slotted part is pointing towards the bottom this is so you can make your final adjustments Figure 5. Do not tighten

Figure 4



Figure 5

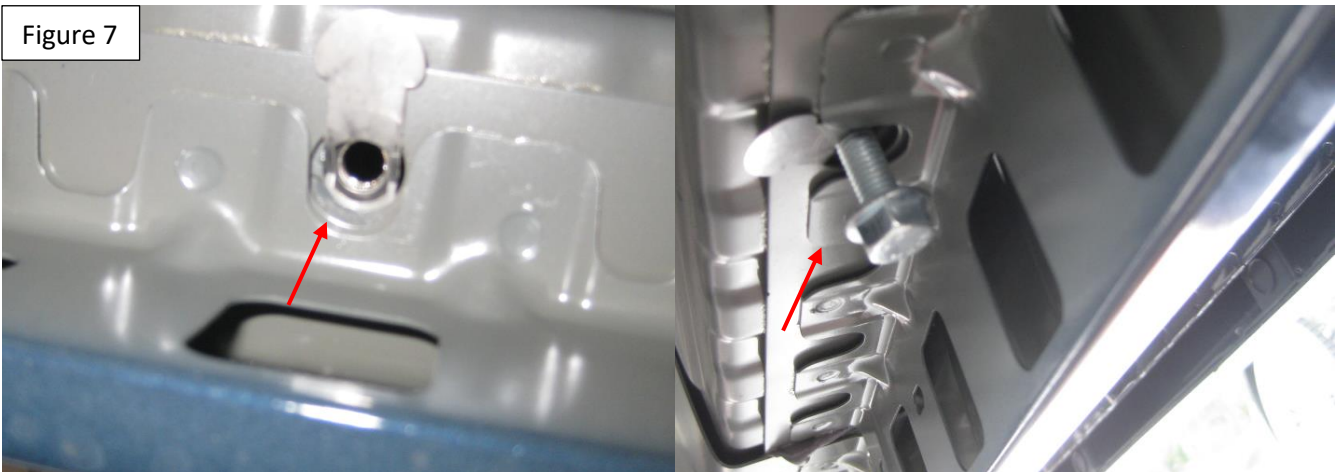


**Step 5:** Locate rear bracket mounting area, note the needed hole sits behind the metal skirt on your vehicle. Figure 6. Install provided HTC 308. Install provided M8 bolt as shown Figure 7. Do not tighten

Figure 7



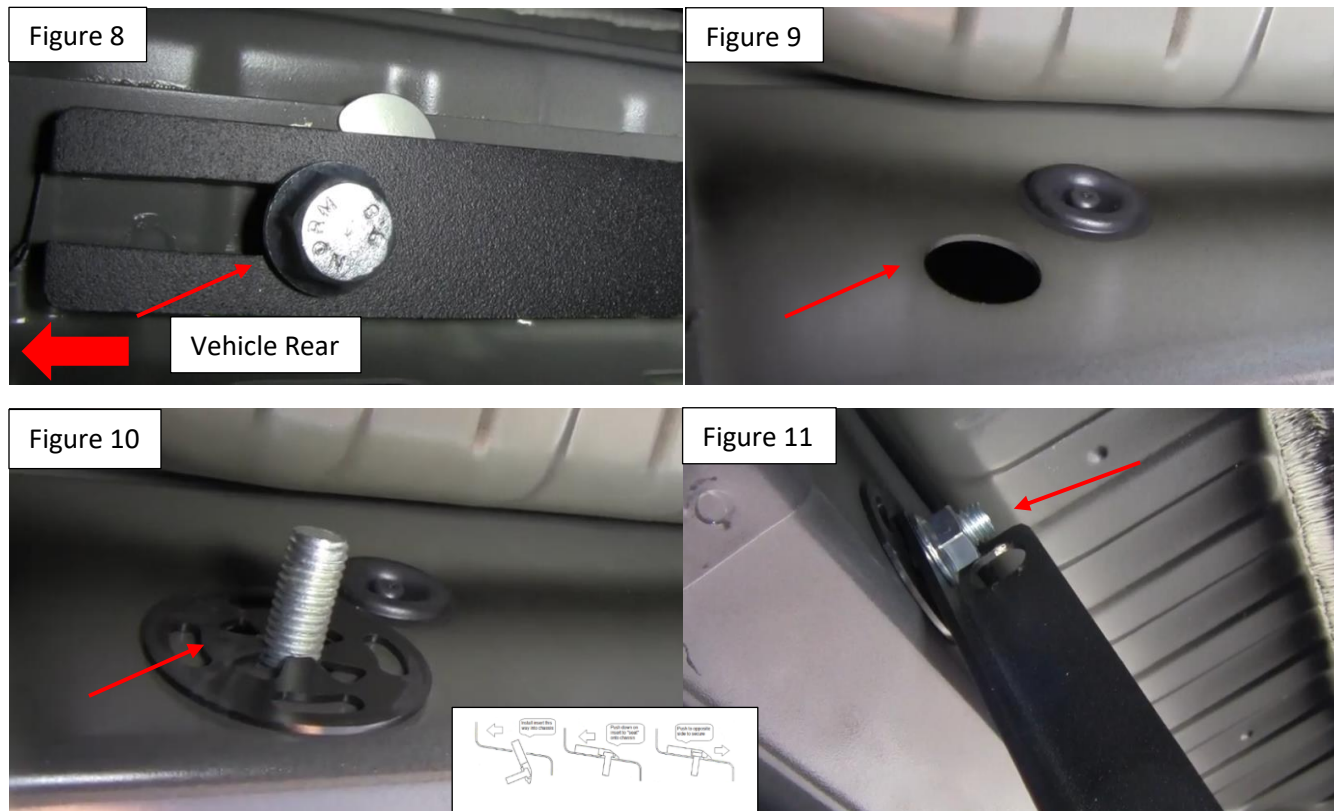
Figure 7



# Installation Instructions 5810 Bracket Kit

**Step 6:** Install rear bracket as shown Figure 8. Do not tighten. Remove factory rubber plug and install provided HTC 262 as shown Figure 9 and 10.

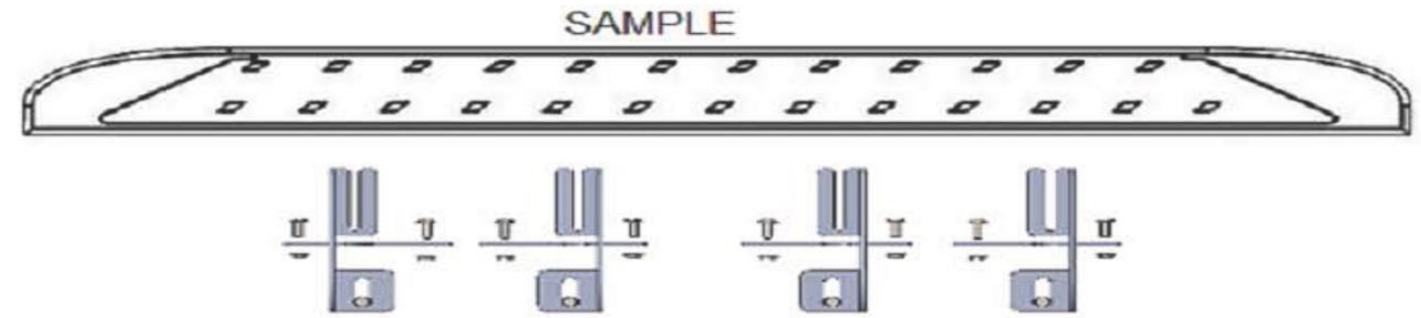
**Step 7:** Install extra support using provided M10 hardware, make sure the slotted part is pointing towards the bottom this is so you can make your final adjustments Figure 11. Do not tighten



**Step 8:** Proceed to last page of this manual for running board install instructions and torque values  
For Technical support please call our team at 1-866-717-6645 and one of our experts will assist you with this installation.

***Thank you for choosing Romik.***

# Running Board Installation Instructions



**RAL / RB2 / REC / RCV / RZR**



**ROB / ROF / RPD**

- 1) Flip your Romik running boards onto a flat surface, make sure to place the running boards on a towel or cardboard in order to protect the surface Figure 1.
- 2) Loosen the M8 bolts on back of your running boards Figure 2. Depending on your model there will be either 6 or 8 bolts installed per side.
- 3) Once your brackets have been installed, place the running board onto the brackets as shown on Figure 3.
- 4) Adjust running boards, centering on vehicle. Hand tight M8 hardware on running boards.
- 5) Follow the torque procedures, torque M8 hardware to **7 ft-lbs** using a torque wrench.
- 6) Cleaning and maintaining your running boards is important, apply a light coat of a quality carnauba wax at least 2X per year. Wash often with mild soap and make sure to remove all soap residue. Many car automatic carwashes use a strong soap, make sure to use enough water to remove all residue.
- 7) Register your products at [www.Romik.com/contact/productregistration](http://www.Romik.com/contact/productregistration)
- 8) Warranty information at [www.Romik.com/warranty](http://www.Romik.com/warranty)