

# ROMIK

## Installation Instructions

Part No. **2823**

Product: Running Boards

Application: **Land Rover Defender 90/110/130**

Level of Difficulty: 1 2 **3** 4 5

Installation Time: 90 Min

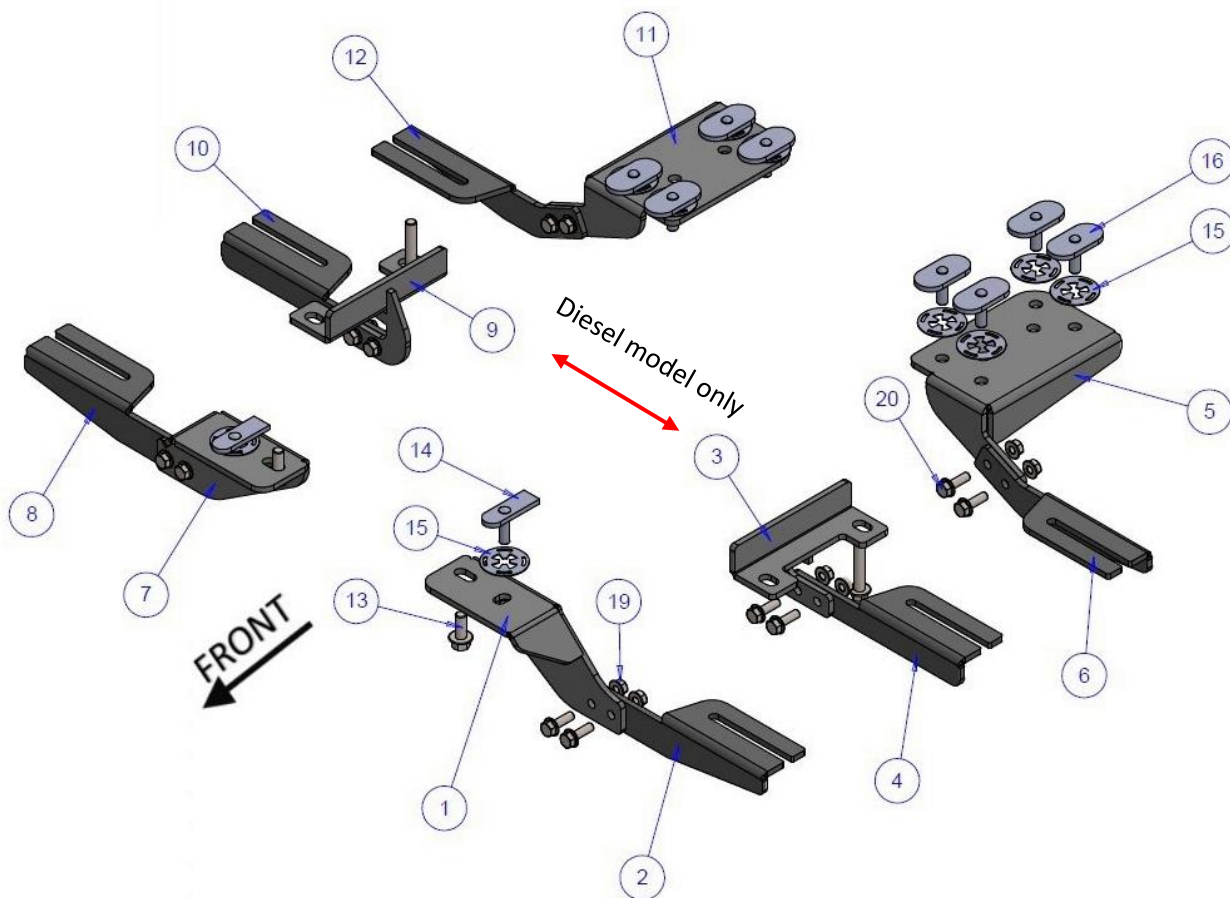
REV 3 10/01/23

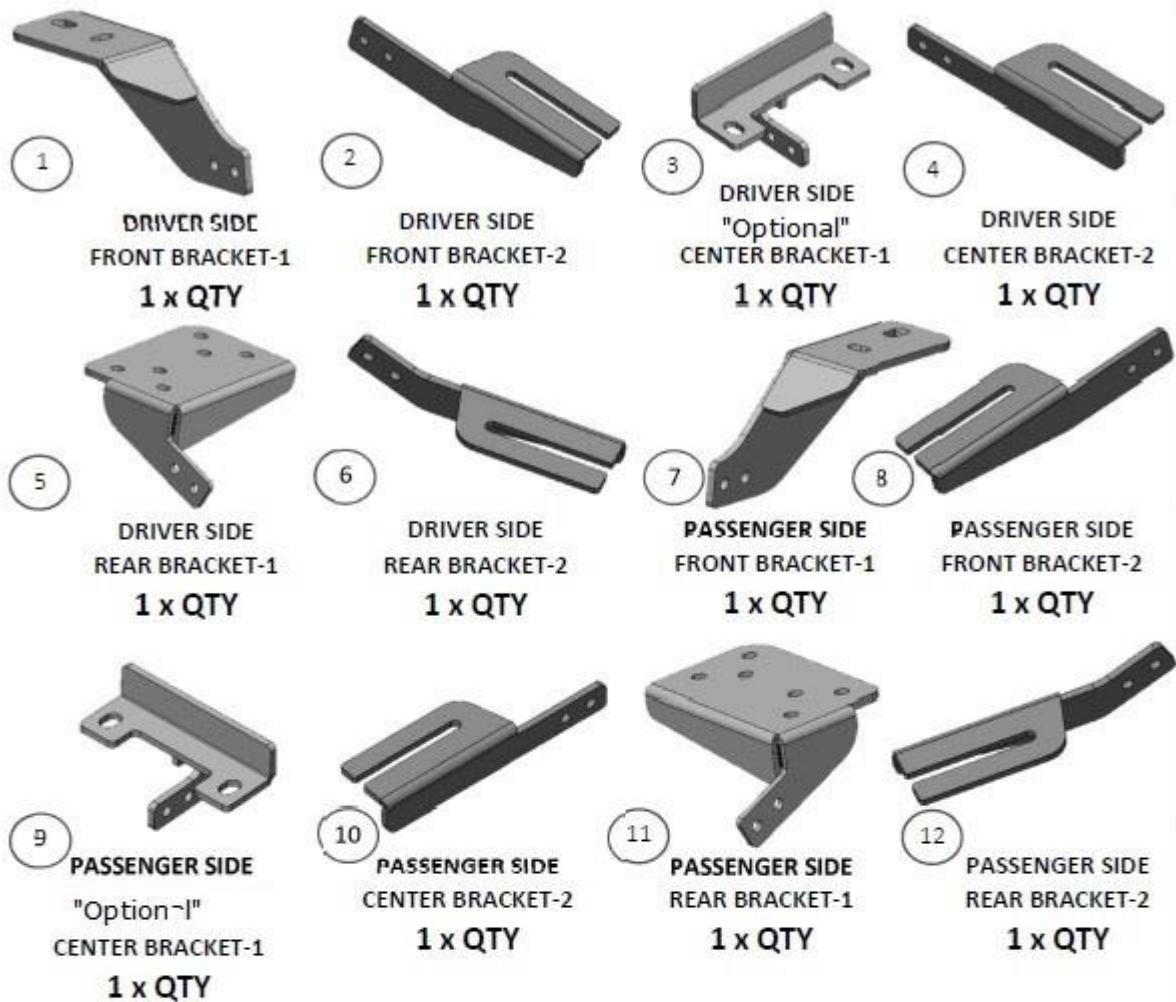
Hardware	Torque Aluminum	Torque Steel to Steel
M6 Bolt	3 ft-lbs.	14 ft-lbs.
M8 Bolt	7 ft-lbs.	65 ft-lbs.
M10 Bolt	16 ft-lbs.	84 ft-lbs.
M12 Bolt	28 ft-lbs.	112 ft-lbs.

**ATTENTION:** Use correct torque settings to avoid damaging the running boards and or mounting brackets. Failure to do so will void your warranty. If you have any questions, please contact our technical team at 1-866-717-6645

Attention: Please make sure that you have the latest instructions from **Romik.com**

QR Scan



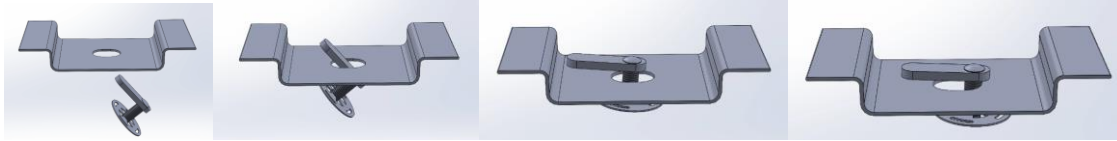


**HARDWARE**

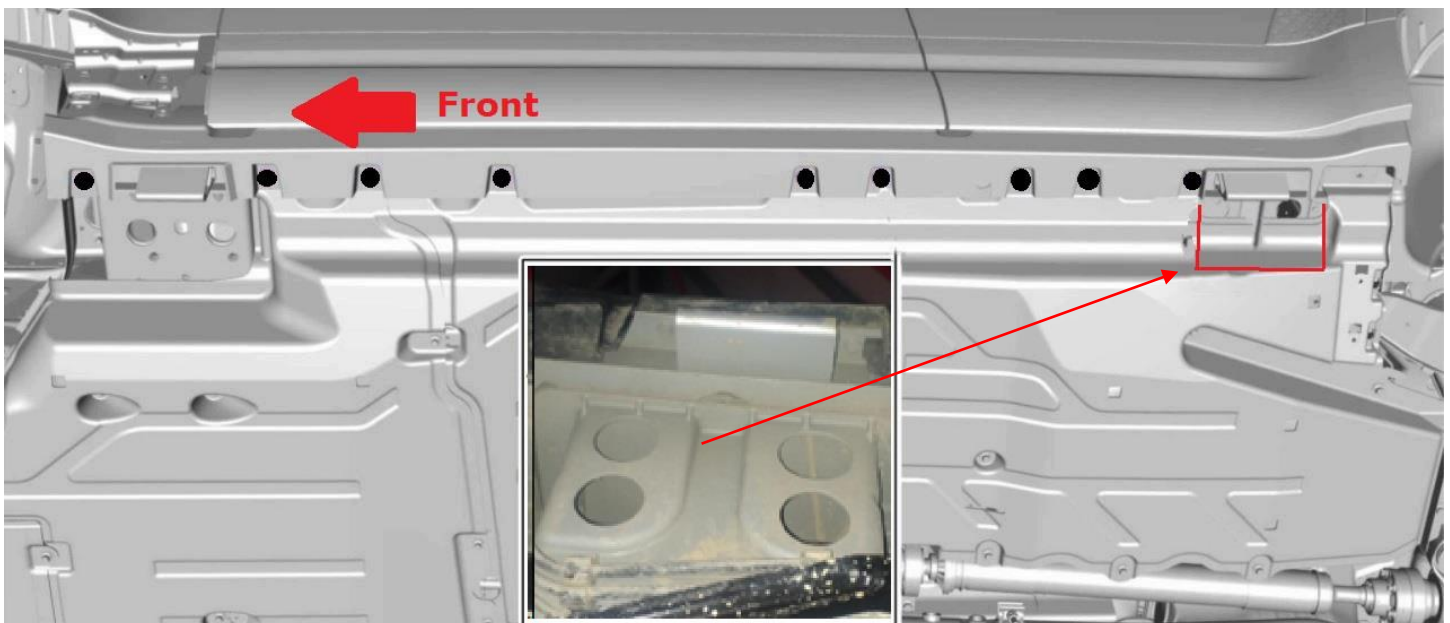


# Installation Instructions 2823 Bracket Kit

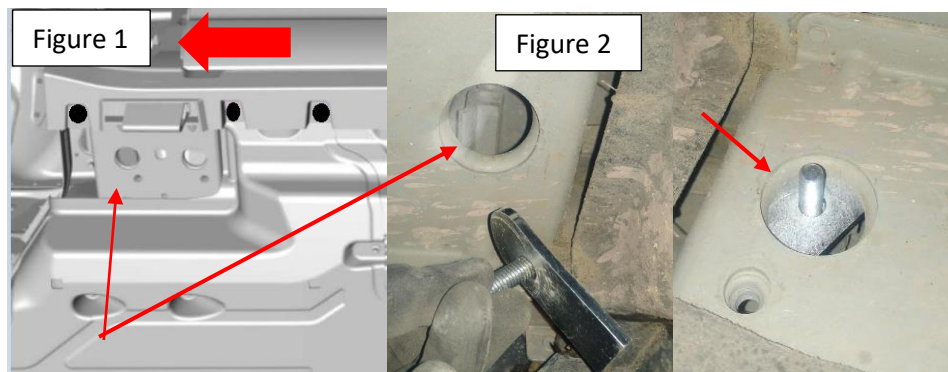
**Important Install Tip:** When installing Romik HTC inserts follow the sequence below. Make sure the HTC is seated correctly and do not use power tools as this will only spin the insert and possibly damage it. Test by tugging on it before installing bracket. Blue loctite is highly recommended.



**NOTE:** Minor trimming is required. Please read below and follow instructions. Cut a 5 x 7-inch section on the felt material as shown below. You must expose the mounting points indicated by the red arrow. **ATTENTION** do not remove panels; this procedure must be done with panels installed.



**Step 1:** Locate front mounting locations as show on Figure 1. Note red arrow points towards the front of the vehicle. Install provided HTC 238 as shown Figure 2





# Installation Instructions 2823 Bracket Kit

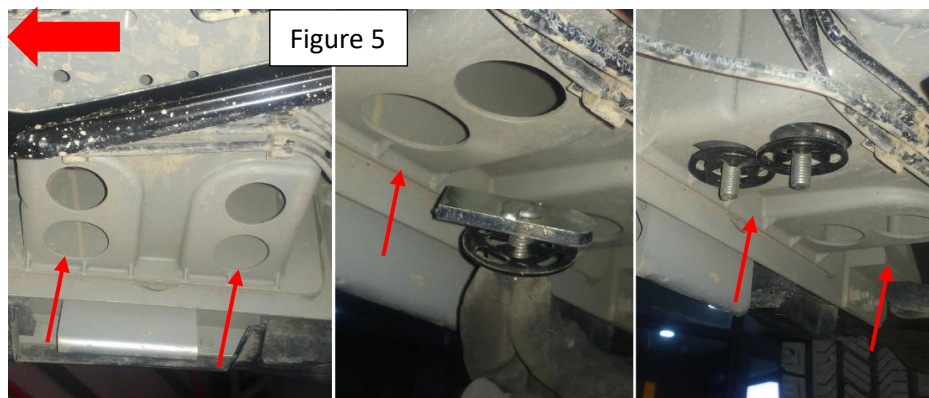
**Step 2:** Assemble and install front bracket using supplied M10 bolt and HTC 238 as shown on Figure 3 Note: Some vehicles may require chasing the threads to remove extra paint or dirt before installing 10mm bolt. Do not fully tighten.



**Step 3: OPTIONAL DIESEL MODEL ONLY** In order to install the optional middle bracket you must trim excess material from underpanel. Remove factory bolt as shown on Figure 4. Assemble and install middle bracket as shown using supplied and factory hardware. On some vehicles this may not be possible to install due to extra lines from Land Rover. **NOTE: Do not use on Defender 90 2 door models or US gas models.**



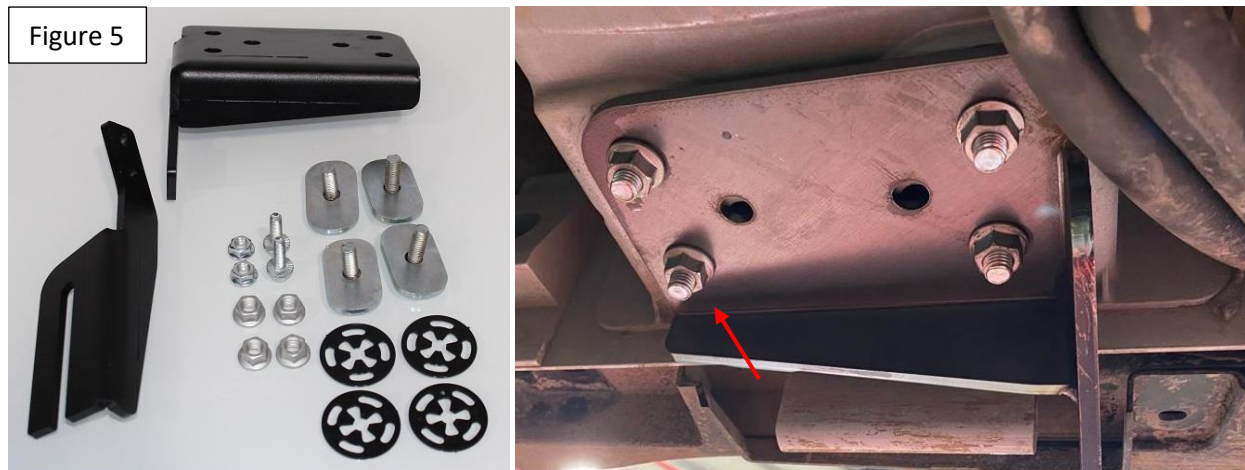
**Step 4:** This step must be done after trimming felt panels. Install provided all 4 HTC 238 as shown Figure 5.



# Installation Instructions 2823 Bracket Kit

---

**Step 5:** Assemble and Install rear bracket as shown Figure 5. Do not fully tighten.



**Step 6:** Use of a level is recommended for this step. Snug all hardware on brackets and running boards to align to desired position. Proceed to torque main brackets to vehicle M10 hardware to 84 lbs. Proceed to torque bracket lower parts to 65 lbs making sure to use level.

**Step 7:** Proceed to last page of this manual for running board install instructions and torque values Max torque is 7 ft lbs. Do not overtighten as this may damage the running boards.

For Technical support please call our team at 1-866-717-6645 and one of our experts will assist you with this installation.

***Thank you for choosing Romik.***

# Installation Instructions Running Boards

**NOTE: Use of power tools will damage the bottom of the running board and void your warranty.**

**Step 1: loosen the M8 hardware on back of the running boards.**

**Step 2: Slide running board onto brackets**

**Step 3: Tighten hardware to 7 ft lbs.**

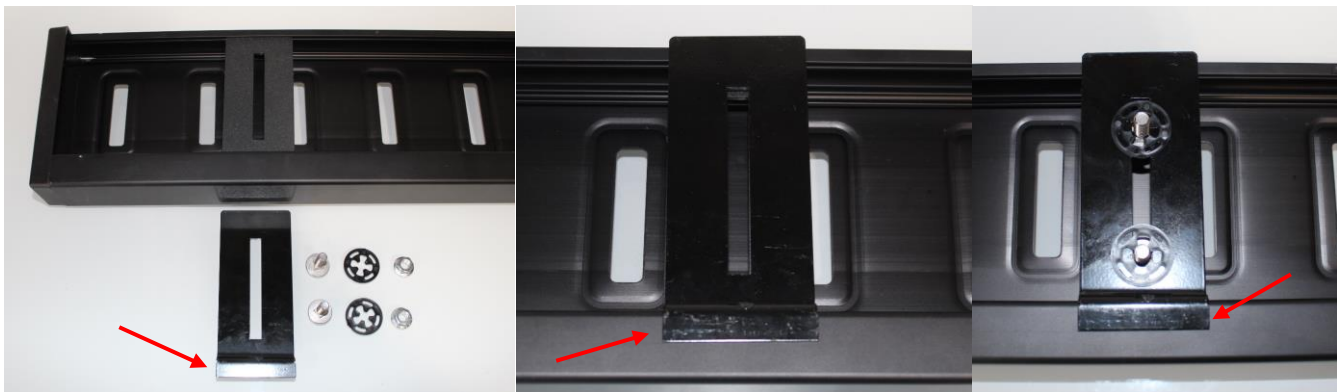


## ROF/RPD/ROB Running boards

**Step 1: Place clamping plate on top of running board as shown below. Make sure clamping plate sits correctly on running board surface.**

**Step 2: Install carriage bolts and plastic retaining clips as shown below.**

**Step 3: Install and tighten hardware to 7 ft lbs.**



## Product Registration and Warranty Information

- Register your Romik products at <https://romik.com/productregistration>
- Warranty information at <http://www.romik.com/warranty>

## Cleaning and maintaining your Romik Running boards

Cleaning and maintaining your running boards is important, apply a light coat of a quality carnauba wax at least 2X per year. Wash often with mild soap and make sure to remove all soap residue. Many car automatic carwashes use a strong soap, make sure to use enough water to remove all residue.

For video instructions on how to clean your Romik products please click here <https://romik.com/cleaning>