



Installation Instructions

REV 2 02/25/20

Part No. **2617**

Product: Running Boards

Application:

Fiat 500X 2015+

Jeep Renegade 2015+

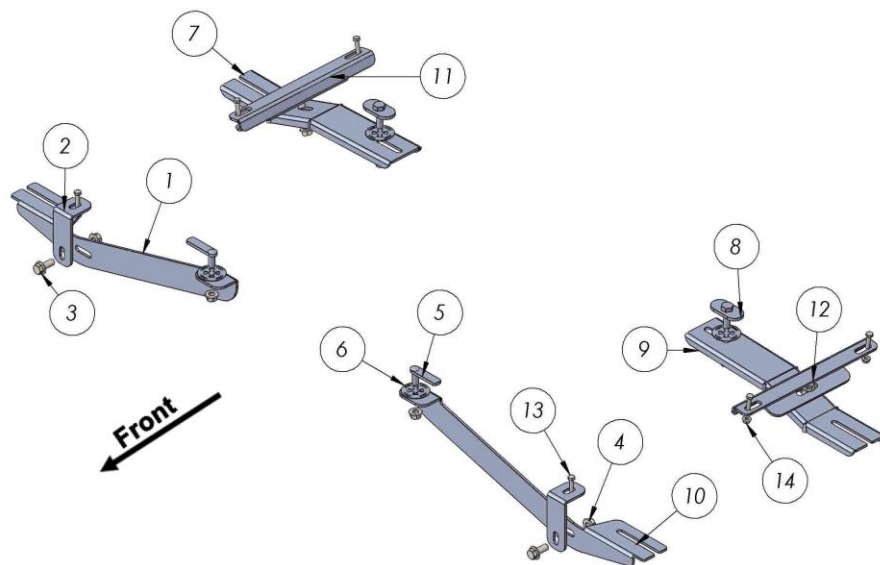
Level of Difficulty: **1** 2 3 4 5

Installation Time: 60 Min

Hardware	Torque Specifications
M6 Bolt	3 ft-lbs.
M8 Bolt	7 ft-lbs.
M10 Bolt	16 ft-lbs.
M12 Bolt	28 ft-lbs.

ATTENTION: Use correct torque settings to avoid damaging the running boards and or mounting brackets. Failure to do so will void your warranty.

If you have any questions please contact our technical team at 1-866-717-6645



ITEM	PART NUMBER	QTY
1	2617100850F0 PASSENGER	1
2	2617100850F1	2
3	DIN 6921 FLANGE BOLT - M10 x 25	4
4	DIN 6923 FLANGE NUT M10	8
5	HTC 262 - M10x30(5x15x60)	2
6	HTC 269 CLIPS (M10)	4
7	2617100850B0 PASSENGER	1
8	HTC 240 - M10X30 (5X34X60)	2
9	2617100850B0 DRIVER	1
10	2617100850F0 DRIVER	1
11	2617100850B1 PASSENGER	1
12	2617100850B1 DRIVER	1
13	DIN 6921 FLANGE BOLT M6 x 25	6
14	DIN 6923 FLANGE NUT M6	6

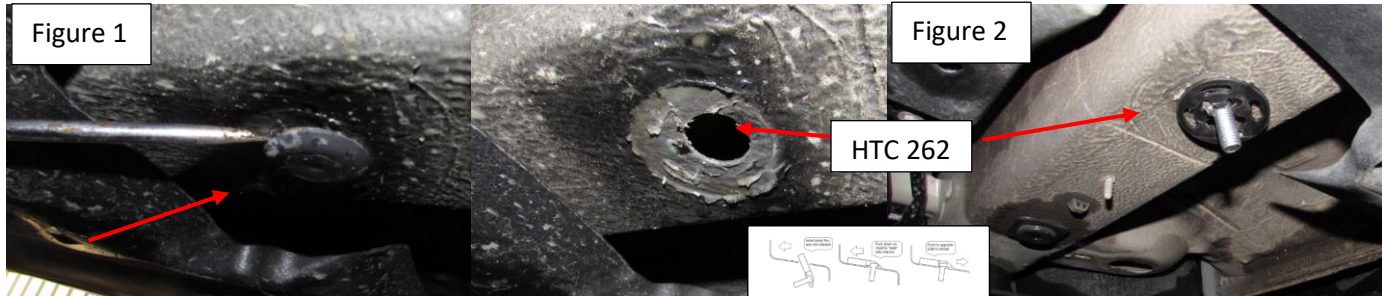


Installation Instructions 2617 Bracket Kit

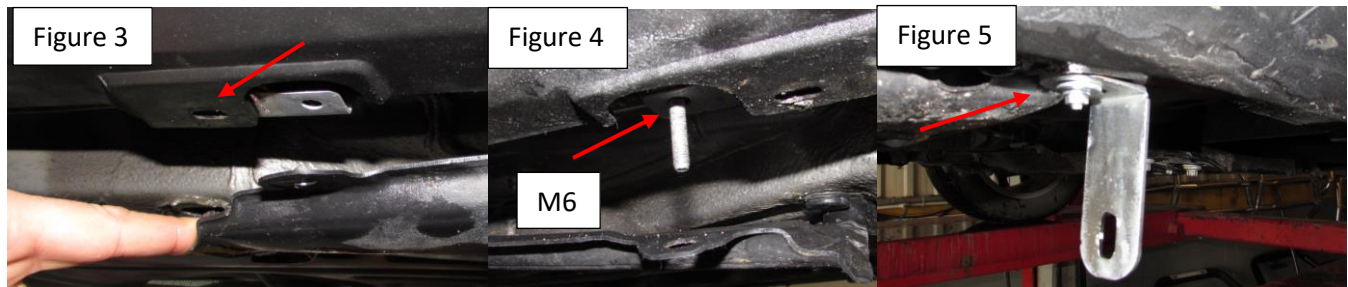
Video
Installation
Instruction:

Step 1: Locate front mounting locations and hardware as per 1st page of this installation manual

Step 2: Remove factory rubber plug Figure 1, Install HTC 262 as shown Figure 2



Step 3: Locate extra support area Figure 3 Remove factory rubber plug and install provided M6 bolt on metal lip, bolt will protrude from top to bottom and create a stud for the extra support Figure 4. Install extra bracket Figure 5.



Step 4: Install main front bracket Figure 6, attach extra support to main bracket using supplied M10 hardware Figure 7. Do not tighten



Step 5: Locate rear extra support area and remove factory plastic retainers Figure 8,9. there are two retainers opposite to each other remove both. Once removed install M6 hardware Figure 10 and 11

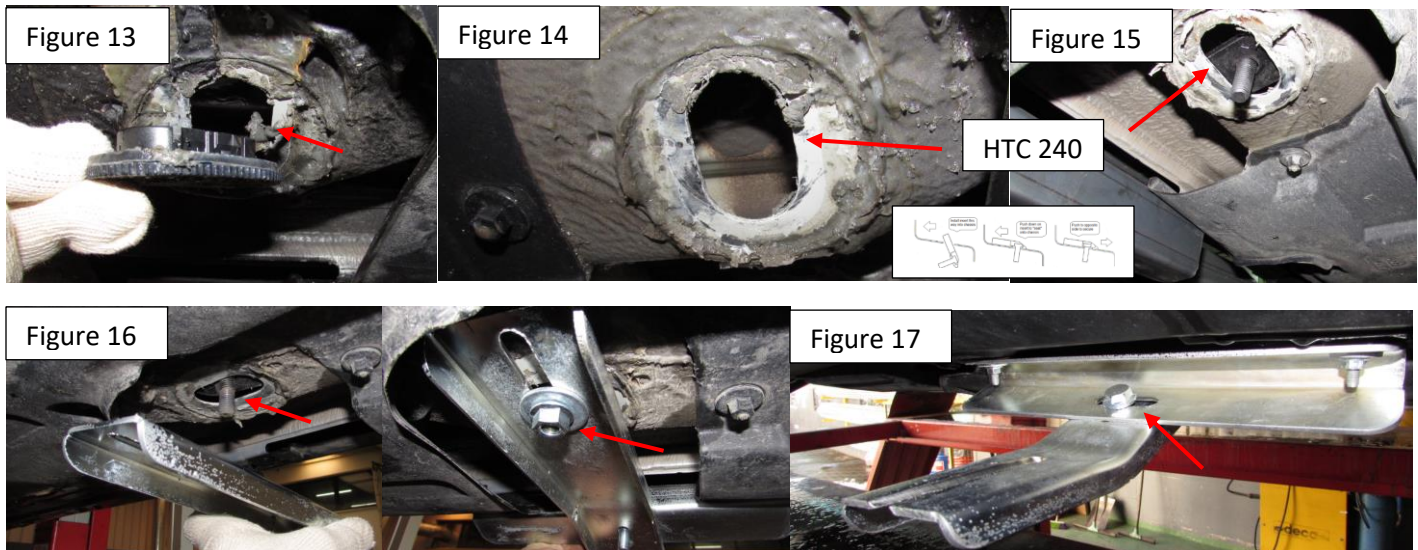


Installation Instructions 2617 Bracket Kit

Step 6: Install extra support bracket as shown on Figure 12



Step 7: Remove rubber plug for rear bracket area as show Figure 13, Install provided HTC 240 as shown Figure 15. Attach rear main bracket as shown Figure 16. Attach extra support to main rear bracket using supplied M10 hardware Figure 17. Do not tighten

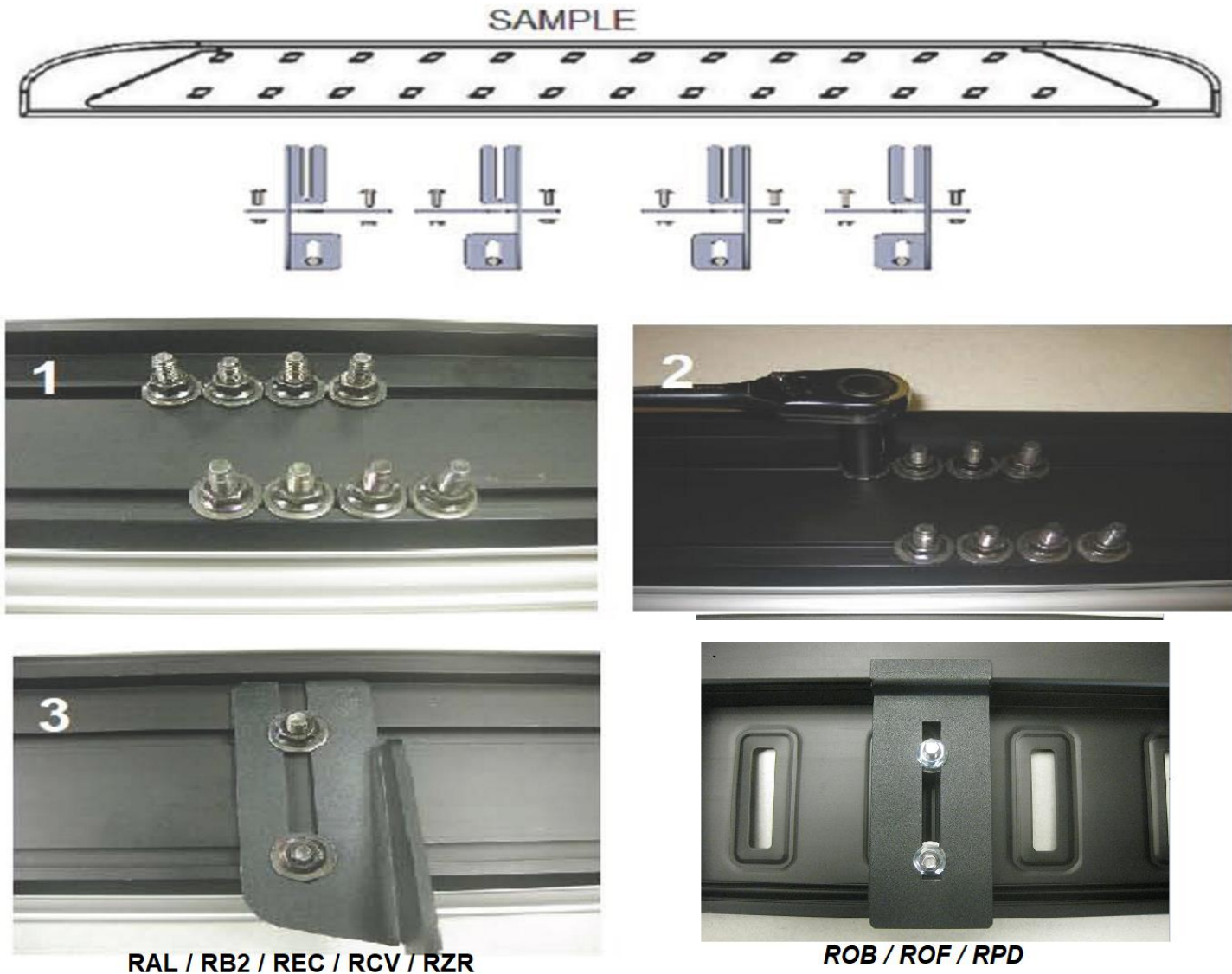


Step 8: Proceed to last page of this manual for running board install instructions and torque values

For Technical support please call our team at 1-866-717-6645 and one of our experts will assist you with this installation.

Thank you for choosing Romik.

Running Board Installation Instructions



- 1) Flip your Romik running boards onto a flat surface, make sure to place the running boards on a towel or cardboard in order to protect the surface Figure 1.
- 2) Loosen the M8 bolts on back of your running boards Figure 2. Depending on your model there will be either 6 or 8 bolts installed per side.
- 3) Once your brackets have been installed, place the running board onto the brackets as shown on Figure 3.
- 4) Adjust running boards, centering on vehicle. Hand tight M8 hardware on running boards.
- 5) Follow the torque procedures, torque M8 hardware to **7 ft-lbs** using a torque wrench.
- 6) Cleaning and maintaining your running boards is important, apply a light coat of a quality carnauba wax at least 2X per year. Wash often with mild soap and make sure to remove all soap residue. Many car automatic carwashes use a strong soap, make sure to use enough water to remove all residue.
- 7) Register your products at www.Romik.com/contact/productregistration
- 8) Warranty information at www.Romik.com/warranty