



Installation Instructions

REV 4 10/15/21

Part No. **2152 / 6211**

Product: Running Boards

Application:

Ford Edge 2015+

Lincoln MKX / Nautilus 2016+

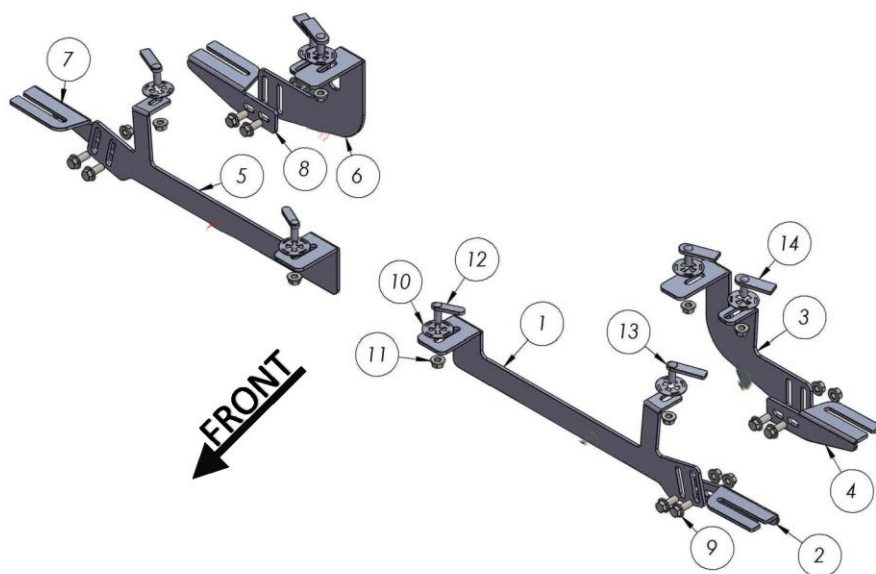
Level of Difficulty: **1 2 3 4 5**

Installation Time: 60 min

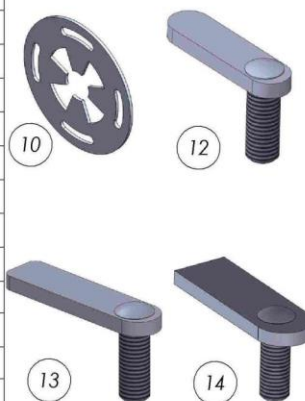
Hardware	Torque Specifications
M6 Bolt	3 ft-lbs.
M8 Bolt	7 ft-lbs.
M10 Bolt	16 ft-lbs.
M12 Bolt	28 ft-lbs.

ATTENTION: Use correct torque settings to avoid damaging the running boards and or mounting brackets. Failure to do so will void your warranty.

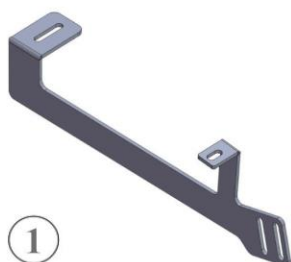
If you have any questions please contact our technical team at 1-866-717-6645



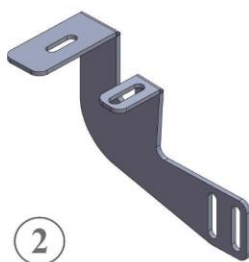
ITEM	PART NAME	QTY
1	2152850F0 DRIVER	1
2	2152850F1 DRIVER	1
3	2152850B0 DRIVER	1
4	2152850B1 DRIVER	1
5	2152850F0 PASSENGER	1
6	2152850B0 PASSENGER	1
7	2152850F1 PASSENGER	1
8	2152850B1 PASSENGER	1
9	DIN 6921 FLANGE BOLT - M10 x 25	8
10	HTC 269 CLIPS / KLIPS (M10)	8
11	DIN 6923 FLANGE NUT - M10	16
12	HTC 243 - M10x25	2
13	HTC 262 - M10x30	2
14	HTC 230 - M10x25(5x20x60)	4



2152 - Ford Edge 15+ / Lincoln Nautilus 16+



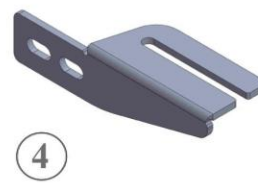
2152850F0
DRIVER SIDE
FRONT BRACKET
1 x QTY



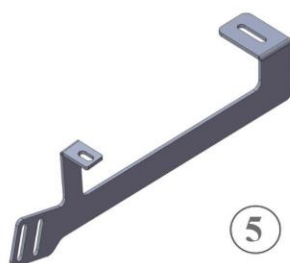
2152850B0
DRIVER SIDE
REAR BRACKET
1 x QTY



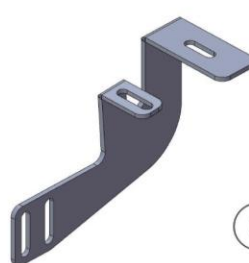
2152850F1
DRIVER SIDE
FRONT BRACKET
1 x QTY



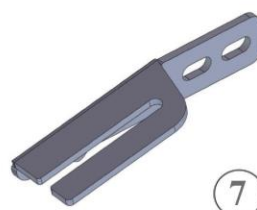
2152850B1
DRIVER SIDE
REAR BRACKET
1 x QTY



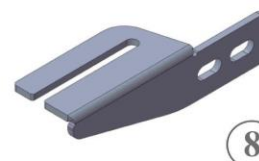
2152850F0
PASSENGER SIDE
FRONT BRACKET
1 x QTY



2152850B0
PASSENGER SIDE
REAR BRACKET
1 x QTY



2152850F1
PASSENGER SIDE
FRONT BRACKET
1 x QTY



2152850B1
PASSENGER SIDE
REAR BRACKET
1 x QTY

HARDWARE



HTC 262 -
M10X30
(5X15X60)
2x



HTC 243 -
M10x25
(4x12x50)
2x



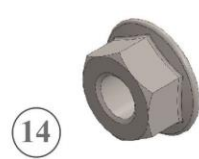
HTC 230 -
M10x25
(5x20x60)
4x



HTC 269 -
CLIPS (M10)
8x



DIN 6921
FLANGE BOLT
-M10x25
8x



DIN 6923
FLANGE NUT
-M10
16x

Installation Instructions 2152 / 6211 Bracket Kit

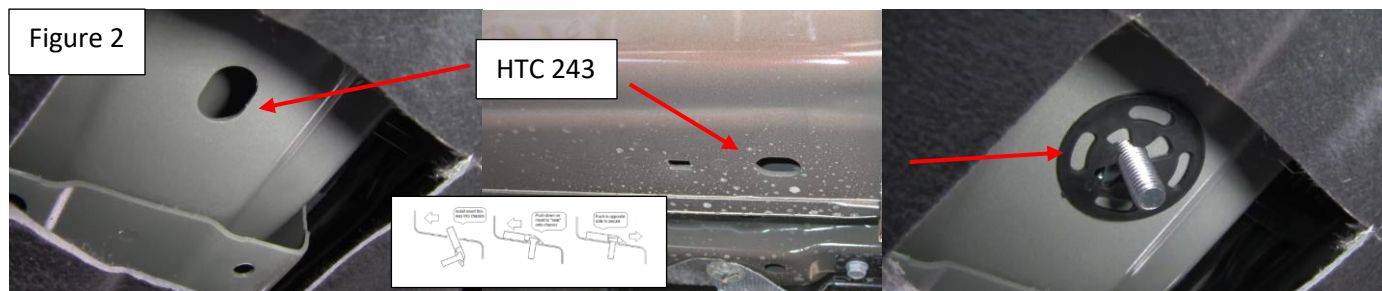
Video
Installation
Instruction:



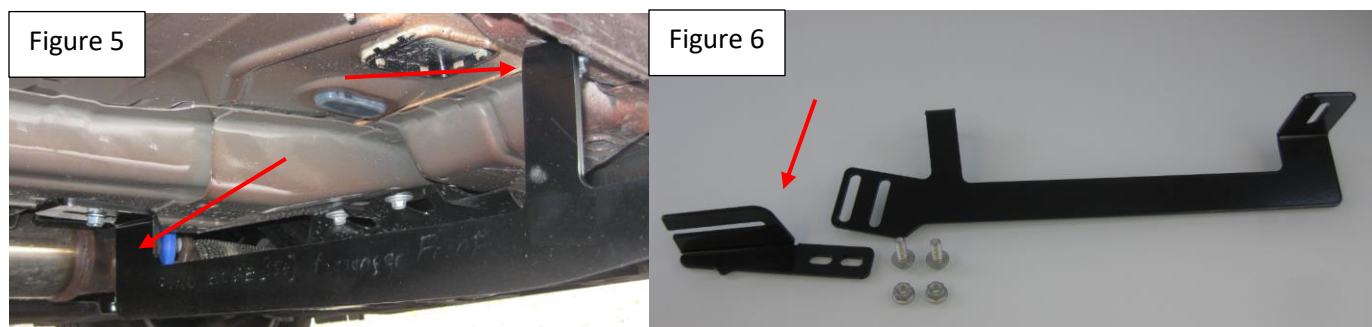
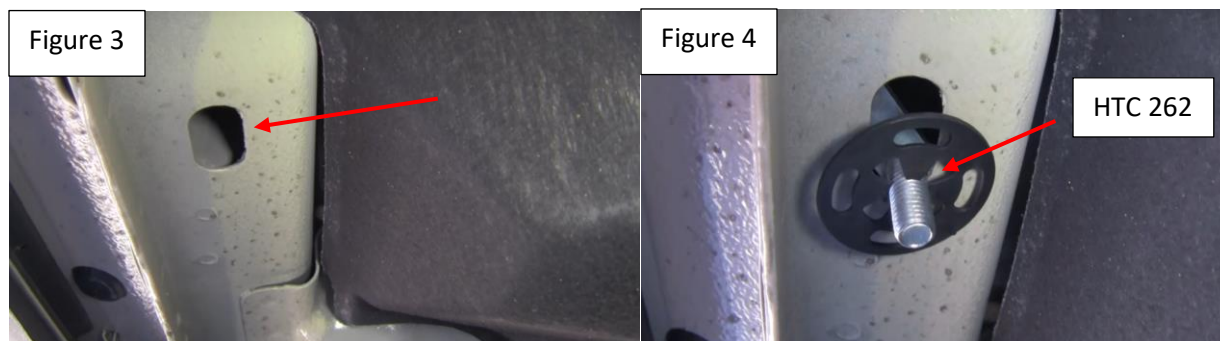
NOTE: This vehicle requires undercarriage panel trimming and use of a level.

Step 1: Locate front mounting locations and hardware as per 1st page of this installation manual. Using a utility knife cut a 4 ½ x 4 1/2 on indented area Figure 1, you do not have to remove the panel. We removed it for instructional purposes.

Step 2; Install provided HTC 243 as shown Figure 2



Step 3: Locate outer support area and install provided HTC 262 as shown Figure 3 and 4. Install main bracket as shown Figure 5. Install running board base plate using supplied M10 hardware. Front plate is angled Figure 6



Installation Instructions 2152 / 6211 Bracket Kit

Step 4: Locate rear bracket mounting area and remove material from cover as necessary Figure 7. Install provided HTC 230 as shown Figure 8



Step 5: Install rear bracket as shown Figure 8, Install running board base plate using supplied M10 hardware.

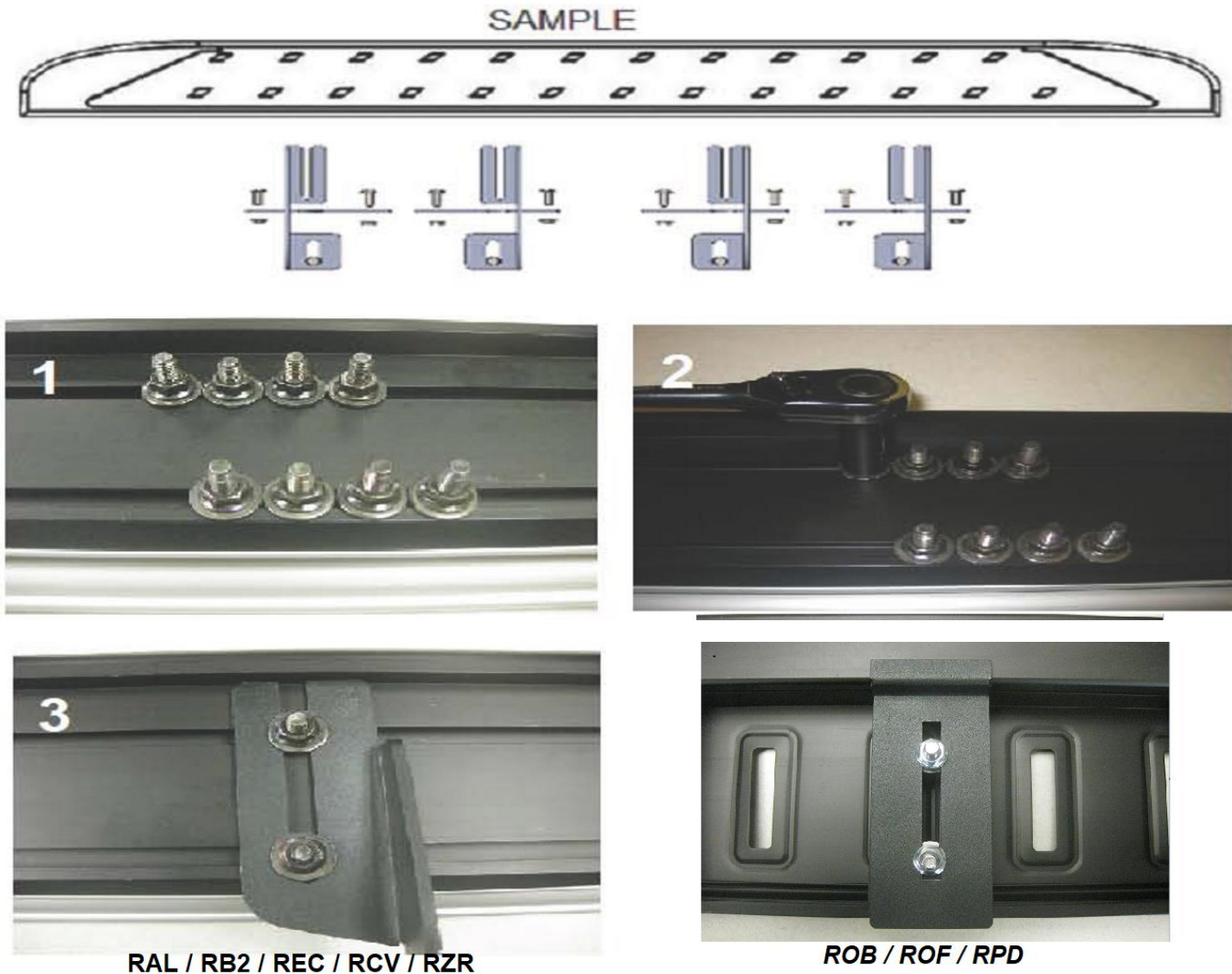


Step 6: Using a level proceed to last page of this manual for running board install instructions and torque values

For Technicall support please call our team at 1-866-717-6645 and one of our experts will assist you with this installation

Thank you for choosing Romik.

Running Board Installation Instructions



- 1) Flip your Romik running boards onto a flat surface, make sure to place the running boards on a towel or cardboard in order to protect the surface Figure 1.
- 2) Loosen the M8 bolts on back of your running boards Figure 2. Depending on your model there will be either 6 or 8 bolts installed per side.
- 3) Once your brackets have been installed, place the running board onto the brackets as shown on Figure 3.
- 4) Adjust running boards, centering on vehicle. Hand tight M8 hardware on running boards.
- 5) Follow the torque procedures, torque M8 hardware to **7 ft-lbs** using a torque wrench.
- 6) Cleaning and maintaining your running boards is important, apply a light coat of a quality carnauba wax at least 2X per year. Wash often with mild soap and make sure to remove all soap residue. Many car automatic carwashes use a strong soap, make sure to use enough water to remove all residue.
- 7) Register your products at www.Romik.com/contact/productregistration
- 8) Warranty information at www.Romik.com/warranty