



Installation Instructions

Part No. **2164**

Product: Running Boards

Application: **Ford Escape 2020+**

Ford Bronco Sport 2021+

Level of Difficulty: 1 **2** 3 4 5

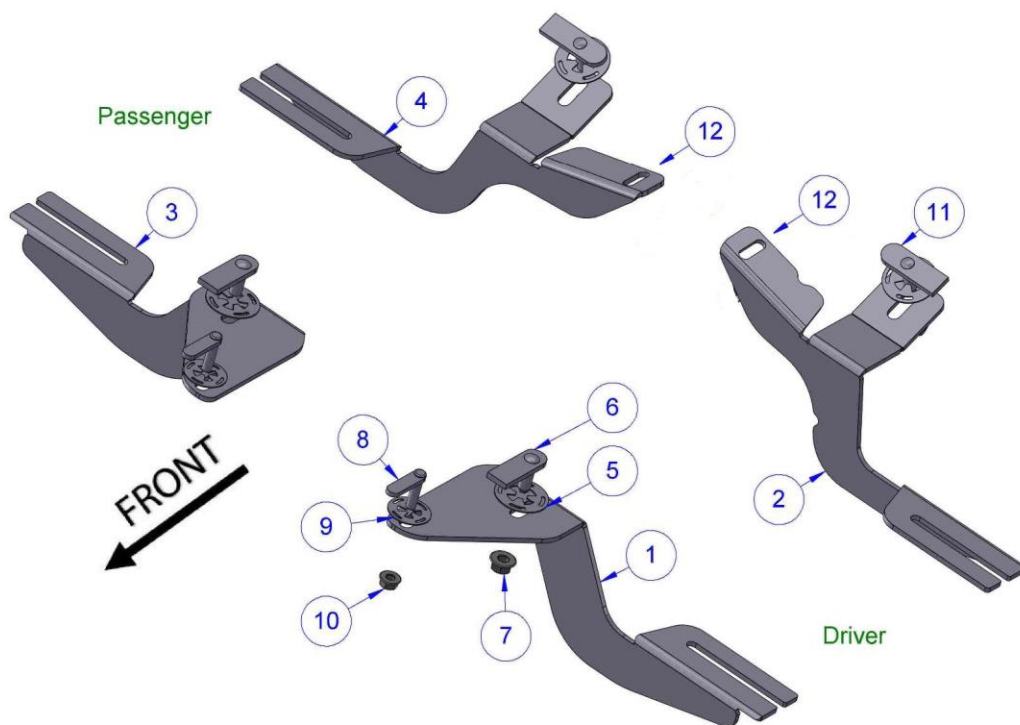
Installation Time: 90 min

REV 2 10/15/21

Hardware	Torque Specifications
M6 Bolt	3 ft-lbs.
M8 Bolt	7 ft-lbs.
M10 Bolt	16 ft-lbs.
M12 Bolt	28 ft-lbs.

ATTENTION: Use correct torque settings to avoid damaging the running boards and or mounting brackets. Failure to do so will void your warranty.

If you have any questions please contact our technical team at 1-866-717-6645



ITEM NO	PART NAME	QTY.
1	2164-850-F0-Dri.	1
2	2164-850-B0-Dri.	1
3	2164-850-F0-Pas.	1
4	2164-850-B0-Pas.	1
5	HTC269 M10 CLIPS	4
6	HTC230 M10X25	2
7	M10 FLANGE NUT	4
8	HTC226 M8X30	2
9	HTC271 M8 CLIPS	2
10	M8 FLANGE NUT	2
11	HTC238 M10X30	2
12	M8X25 Special Bolt & Plate	2

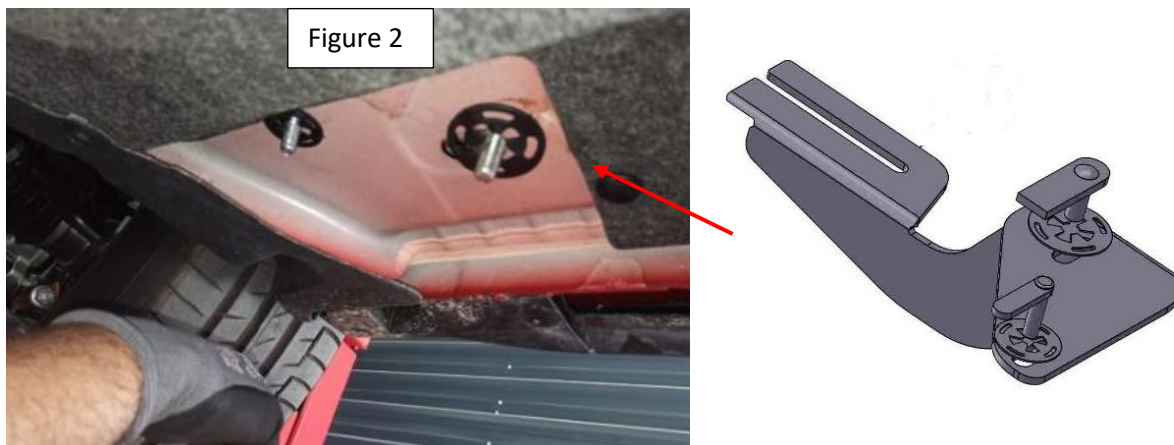
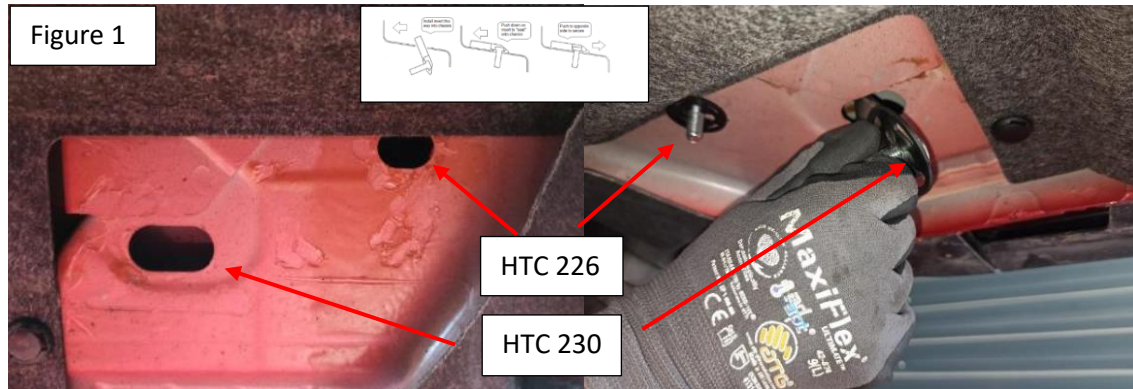


Installation Instructions 2164 Bracket Kit

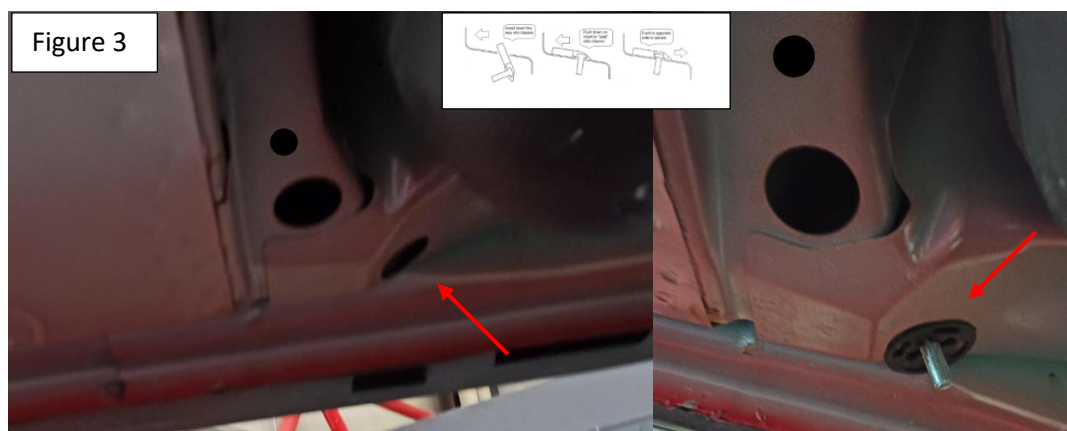
Video
Installation
Instruction:

Step 1: Locate front mounting locations and hardware as per 1st page of this installation manual

Step 2: Install provided HTC 230 and HTC 226 on both front locations Figure 1. Proceed to install front bracket as shown on Figure 2. Do not tighten (Passenger side shown)

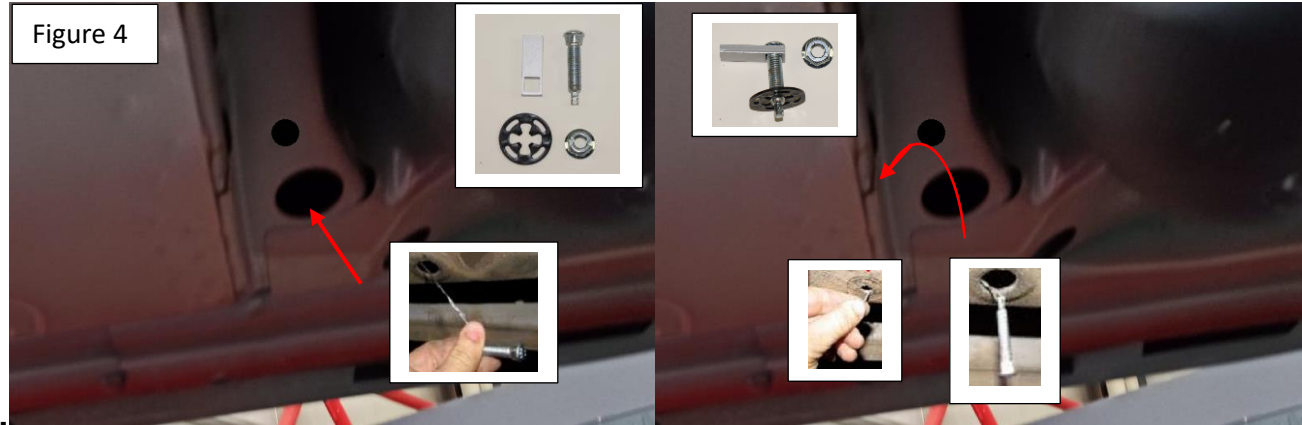


Step 3: Locate rear bracket mounting area, install provided HTC 238 as shown Figure 3. NOTE some models will require undercarriage panel trimming. Trim as needed.



Installation Instructions 2164 Bracket Kit

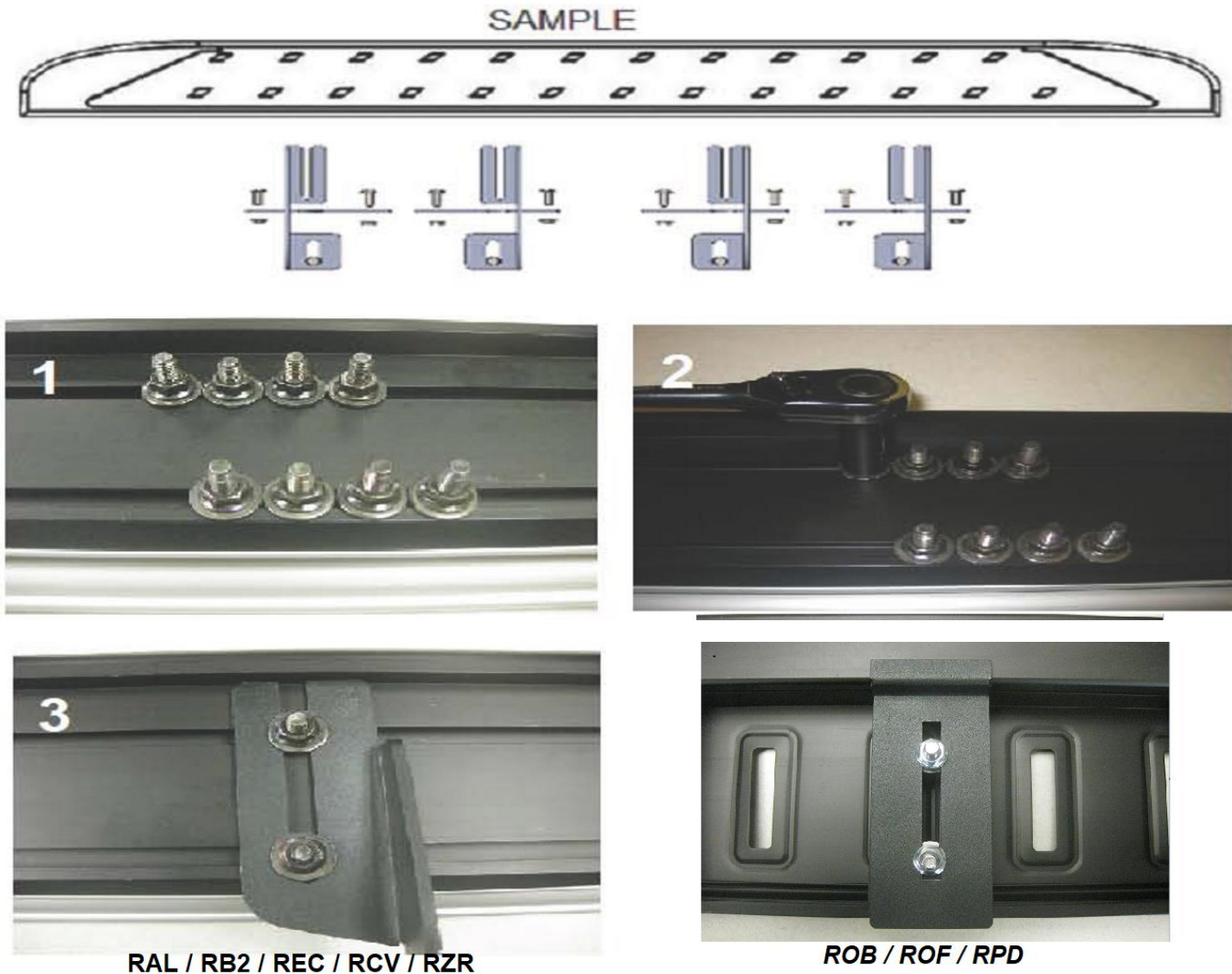
Step 4: Using supplied wire, “pass” special bolt and plate through the large hole coming out of the smaller hole just above. Install plastic “klips” without letting go of wire to prevent losing the special bolt inside the chassis. as show Figure 4. Install rear bracket as shown of Figure 5, do not tighten



Step 5: Proceed to last page of this manual for running board install instructions and torque values
For Technical support please call our team at 1-866-717-6645 and one of our experts will assist you with this installation.

Thank you for choosing Romik.

Running Board Installation Instructions



- 1) Flip your Romik running boards onto a flat surface, make sure to place the running boards on a towel or cardboard in order to protect the surface Figure 1.
- 2) Loosen the M8 bolts on back of your running boards Figure 2. Depending on your model there will be either 6 or 8 bolts installed per side.
- 3) Once your brackets have been installed, place the running board onto the brackets as shown on Figure 3.
- 4) Adjust running boards, centering on vehicle. Hand tight M8 hardware on running boards.
- 5) Follow the torque procedures, torque M8 hardware to **7 ft-lbs** using a torque wrench.
- 6) Cleaning and maintaining your running boards is important, apply a light coat of a quality carnauba wax at least 2X per year. Wash often with mild soap and make sure to remove all soap residue. Many car automatic carwashes use a strong soap, make sure to use enough water to remove all residue.
- 7) Register your products at www.Romik.com/contact/productregistration
- 8) Warranty information at www.Romik.com/warranty