



## Installation Instructions

Part No. **3615**

Product: Running Boards

Application:

**Subaru Outback 2015-2019**

Level of Difficulty: 1 **2** 3 4 5

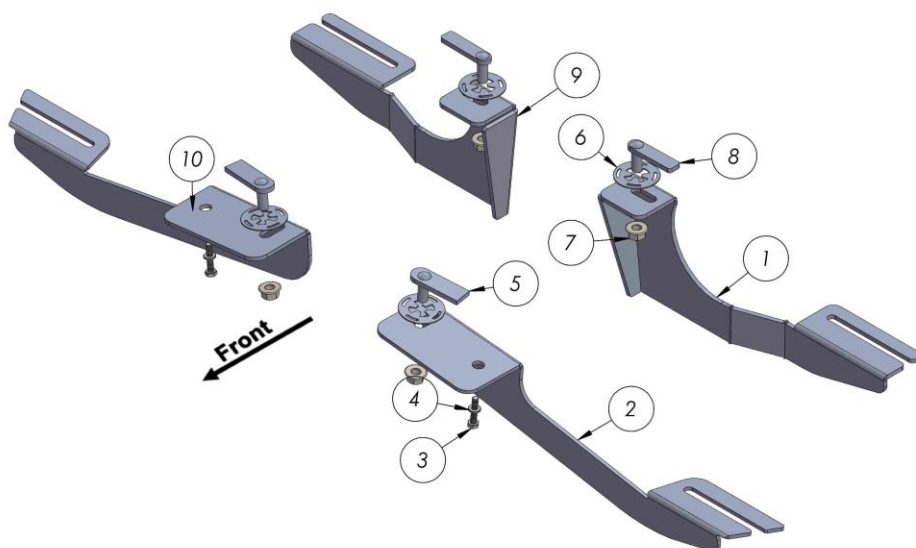
Installation Time: 60 min.

REV 3 04/15/20

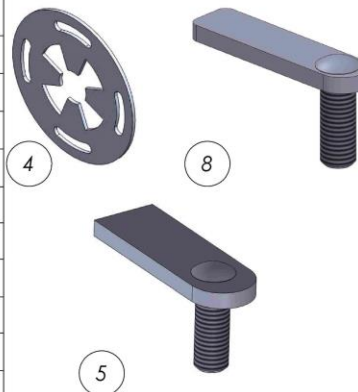
Hardware	Torque Specifications
M6 Bolt	3 ft-lbs.
M8 Bolt	7 ft-lbs.
M10 Bolt	16 ft-lbs.
M12 Bolt	28 ft-lbs.

**ATTENTION:** Use correct torque settings to avoid damaging the running boards and or mounting brackets. Failure to do so will void your warranty.

If you have any questions please contact our technical team at 1-866-717-6645



ITEM/NO	PART NAME	QTY
1	3615850F0 DRIVER	1
2	3615850F0 DRIVER	1
3	DIN 933 BOLT - M6 x 30	2
4	DIN 125 WASHER - M6	2
5	HTC 230 - M10x25	2
6	HTC 269 - CLIPS (M10)	4
7	DIN 6923 FLANGE NUT - M10	4
8	HTC 262 - M10X30 (5X15X60)	2
9	3615850F0 PASSENGER	1
10	3615850B0 PASSENGER	1



# Installation Instructions 3615 Bracket kit

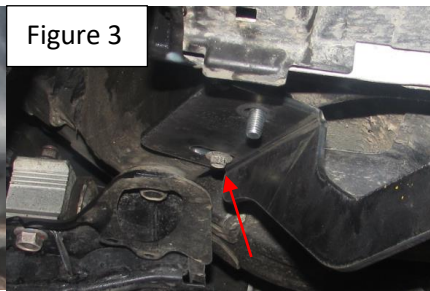
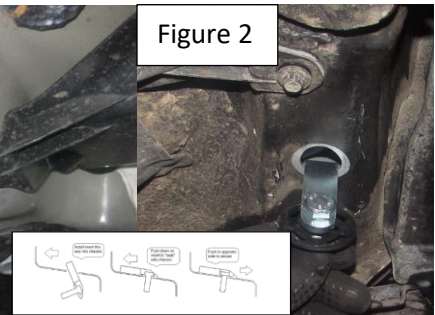
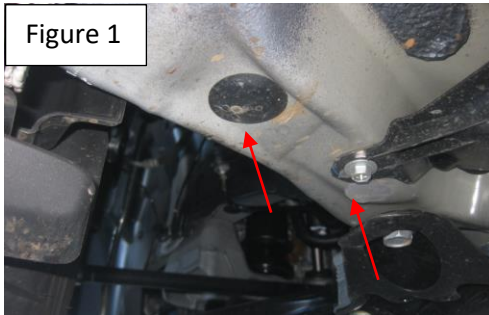
Video  
Installation  
Instruction:



**Step 1:** Locate front mounting locations and hardware as per 1<sup>st</sup> page of this installation manual

**Step 2:** Remove factory rubber plug and 10mm bolt Figure 1. Discard as they will not be needed.

**Step 3:** Install provided HTC 230 as shown Figure 2. Proceed to attach front bracket using supplied M6 hardware Figure 3. Do not tighten, please review images below front bracket must exit at a 60-degree angle.

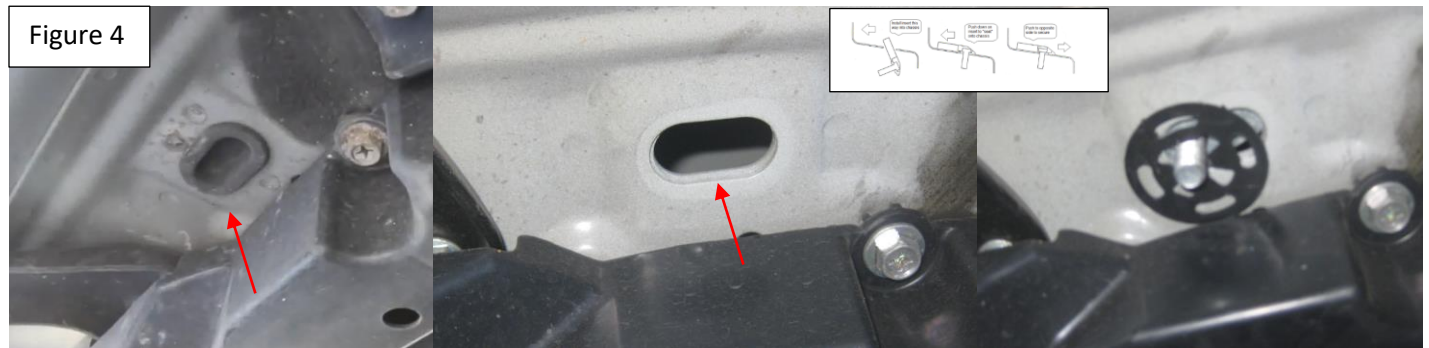


**NOTE: Bracket must come out at a 60 degree angle**



# Installation Instructions 3615 Bracket kit

**Step 3:** Remove factory rubber plug, install provided HTC 262 as shown Figure 4.



**Step 4:** Install rear bracket, start by pointing the brackets towards the front of the vehicle, attach 10mm and proceed to turn bracket outwards. Example Drivers side install at 12 o'clock and then turn to 9 o'clock. Do not tighten



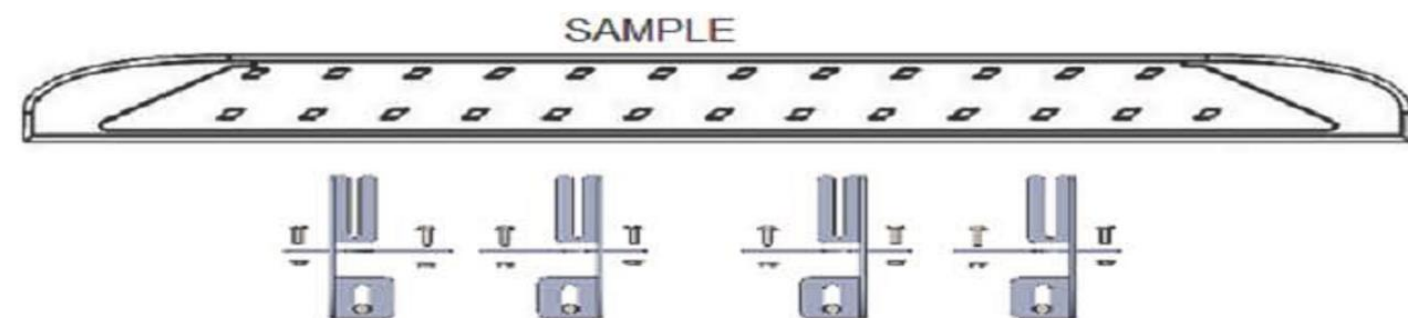
**Step 5:** Proceed to last page of this manual for running board install instructions and torque values

For Technical support please call our team at 1-866-717-6645 and one of our experts will assist you with this installation.

***Thank you for choosing Romik.***



# Running Board Installation Instructions



**RAL / RB2 / REC / RCV / RZR**



**ROB / ROF / RPD**

- 1) Flip your Romik running boards onto a flat surface, make sure to place the running boards on a towel or cardboard in order to protect the surface Figure 1.
- 2) Loosen the M8 bolts on back of your running boards Figure 2. Depending on your model there will be either 6 or 8 bolts installed per side.
- 3) Once your brackets have been installed, place the running board onto the brackets as shown on Figure 3.
- 4) Adjust running boards, centering on vehicle. Hand tight M8 hardware on running boards.
- 5) Follow the torque procedures, torque M8 hardware to **7 ft-lbs** using a torque wrench.
- 6) Cleaning and maintaining your running boards is important, apply a light coat of a quality carnauba wax at least 2X per year. Wash often with mild soap and make sure to remove all soap residue. Many car automatic carwashes use a strong soap, make sure to use enough water to remove all residue.
- 7) Register your products at [www.Romik.com/contact/productregistration](http://www.Romik.com/contact/productregistration)
- 8) Warranty information at [www.Romik.com/warranty](http://www.Romik.com/warranty)