



## Installation Instructions

Part No. **3612**

Product: Running Boards

Application:

**Subaru XV/Crosstrek 2014+**

Level of Difficulty: 1 **2** 3 4 5

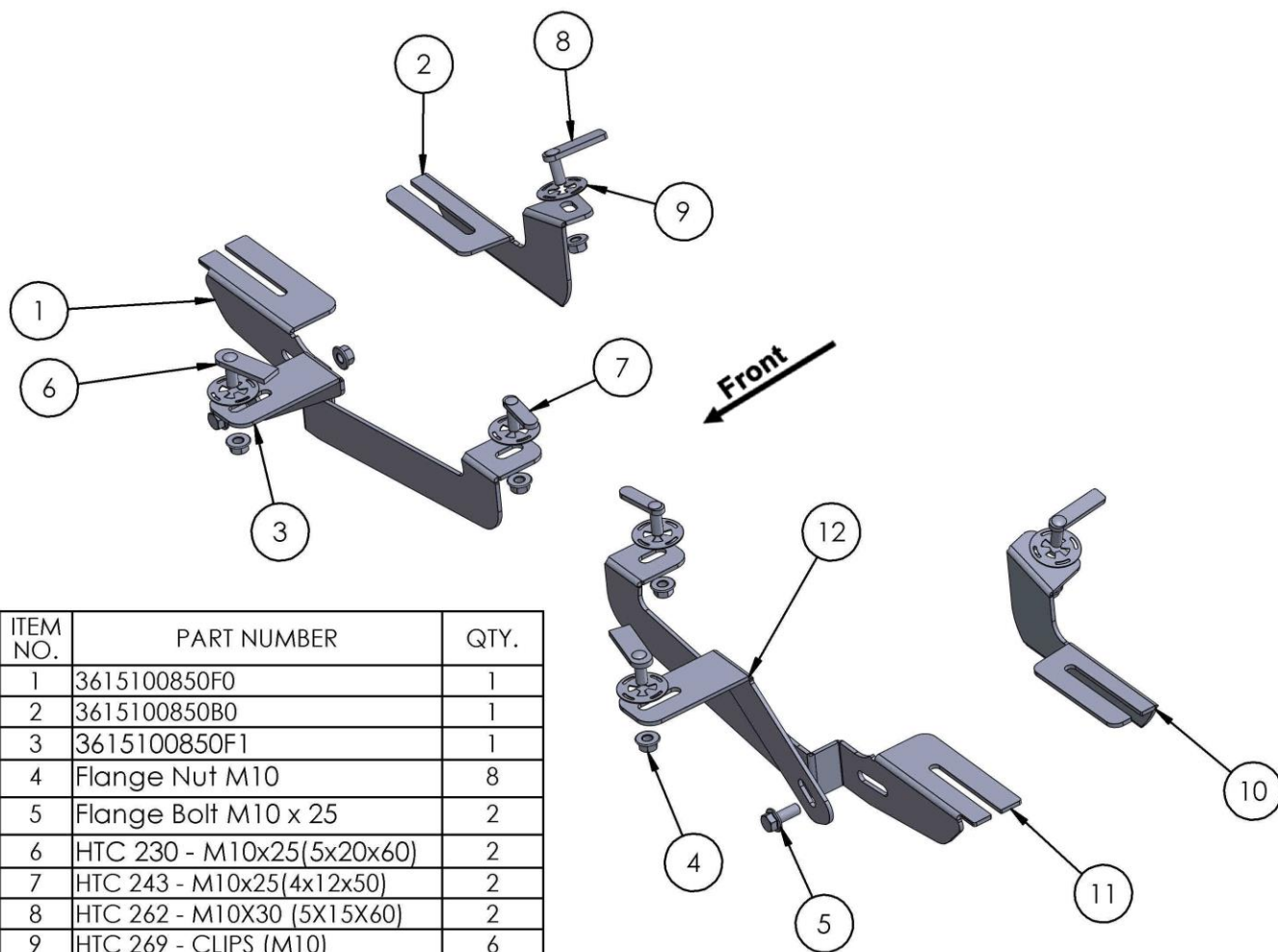
Installation Time: 60 min

REV 3 04/15/20

Hardware	Torque Specifications
M6 Bolt	3 ft-lbs.
M8 Bolt	7 ft-lbs.
M10 Bolt	16 ft-lbs.
M12 Bolt	28 ft-lbs.

**ATTENTION:** Use correct torque settings to avoid damaging the running boards and or mounting brackets. Failure to do so will void your warranty.

If you have any questions please contact our technical team at 1-866-717-6645



ITEM NO.	PART NUMBER	QTY.
1	3615100850F0	1
2	3615100850B0	1
3	3615100850F1	1
4	Flange Nut M10	8
5	Flange Bolt M10 x 25	2
6	HTC 230 - M10x25(5x20x60)	2
7	HTC 243 - M10x25(4x12x50)	2
8	HTC 262 - M10X30 (5X15X60)	2
9	HTC 269 - CLIPS (M10)	6
10	3615100850B0	1
11	3615100850F0	1
12	3615100850F1	1

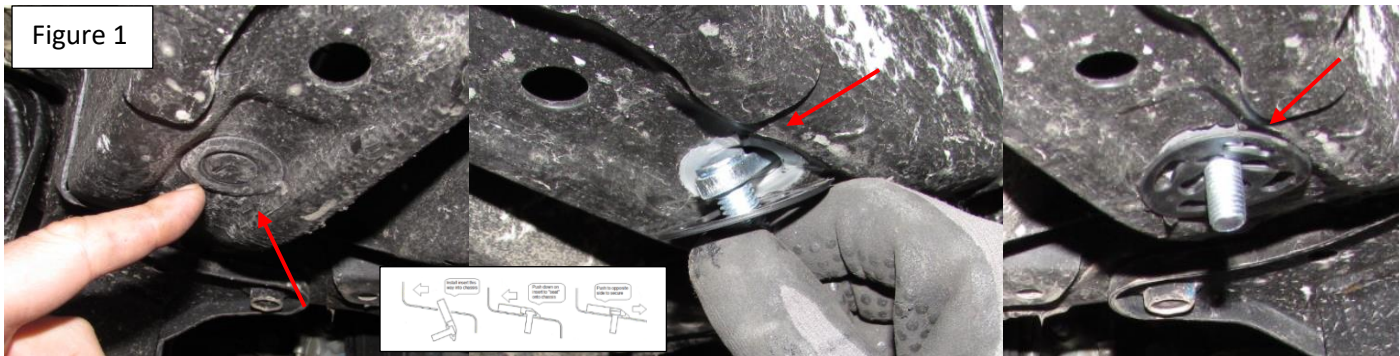
# Installation Instructions 3612 Bracket Kit

Video  
Installation  
Instruction:

**Note:** Some models may require plastic undercarriage trimming

**Step 1:** Locate front mounting locations and hardware as per 1<sup>st</sup> page of this installation manual

**Step 2:** Remove factory rubber plug, install provided HTC 243 as show Figure 1



**Step 3:** Remove factory rubber plug, install provided HTC 230 as show Figure 2 This area is for the extra support.

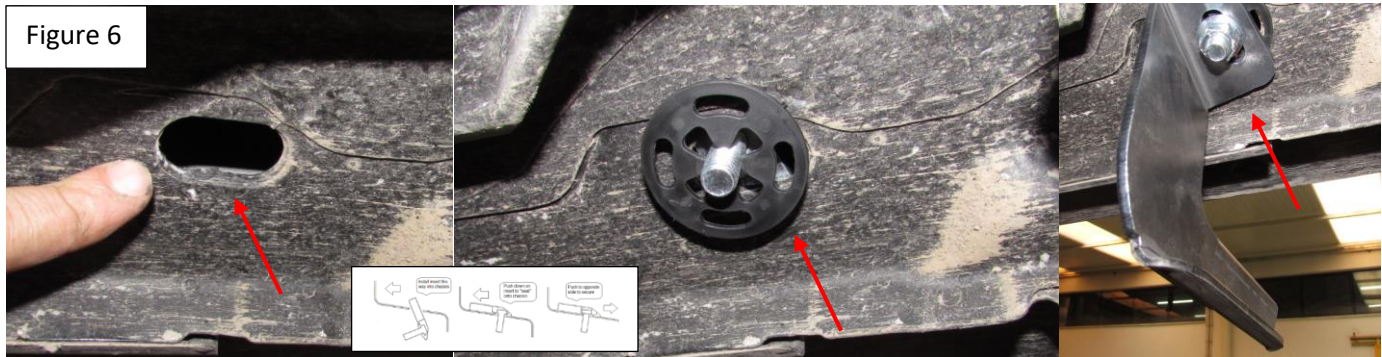


**Step 4:** Install main bracket as shown Figure 3 do not tighten. Proceed to install extra support as shown Figure 4. Do not tighten. Attach extra support to main bracket using supplied M10 hardware Figure 5. Do not tighten.



# Installation Instructions 3612 Bracket Kit

**Step 5:** Locate rear bracket area, insert provided HTC 230 as shown Figure 1 and proceed to attach rear main bracket. Do not tighten.



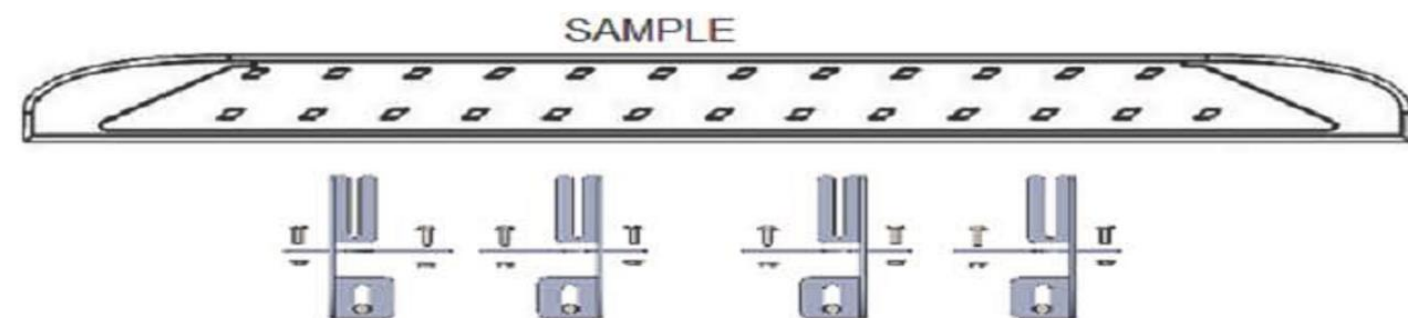
**Step 6:** Proceed to last page of this manual for running board install instructions and torque values

For Technical support please call our team at 1-866-717-6645 and one of our experts will assist you with this installation.

***Thank you for choosing Romik.***



# Running Board Installation Instructions



**RAL / RB2 / REC / RCV / RZR**



**ROB / ROF / RPD**

- 1) Flip your Romik running boards onto a flat surface, make sure to place the running boards on a towel or cardboard in order to protect the surface Figure 1.
- 2) Loosen the M8 bolts on back of your running boards Figure 2. Depending on your model there will be either 6 or 8 bolts installed per side.
- 3) Once your brackets have been installed, place the running board onto the brackets as shown on Figure 3.
- 4) Adjust running boards, centering on vehicle. Hand tight M8 hardware on running boards.
- 5) Follow the torque procedures, torque M8 hardware to **7 ft-lbs** using a torque wrench.
- 6) Cleaning and maintaining your running boards is important, apply a light coat of a quality carnauba wax at least 2X per year. Wash often with mild soap and make sure to remove all soap residue. Many car automatic carwashes use a strong soap, make sure to use enough water to remove all residue.
- 7) Register your products at [www.Romik.com/contact/productregistration](http://www.Romik.com/contact/productregistration)
- 8) Warranty information at [www.Romik.com/warranty](http://www.Romik.com/warranty)