

ROMIK

Installation Instructions

Part No. **3944**

Product: Running Boards

Application: **Toyota Highlander 2020 – Present**

Toyota Grand Highlander 2024 – Present

Lexus TX 2024 - Present

Level of Difficulty: 1 2 3 **4** 5

Installation Time: 120 Min.

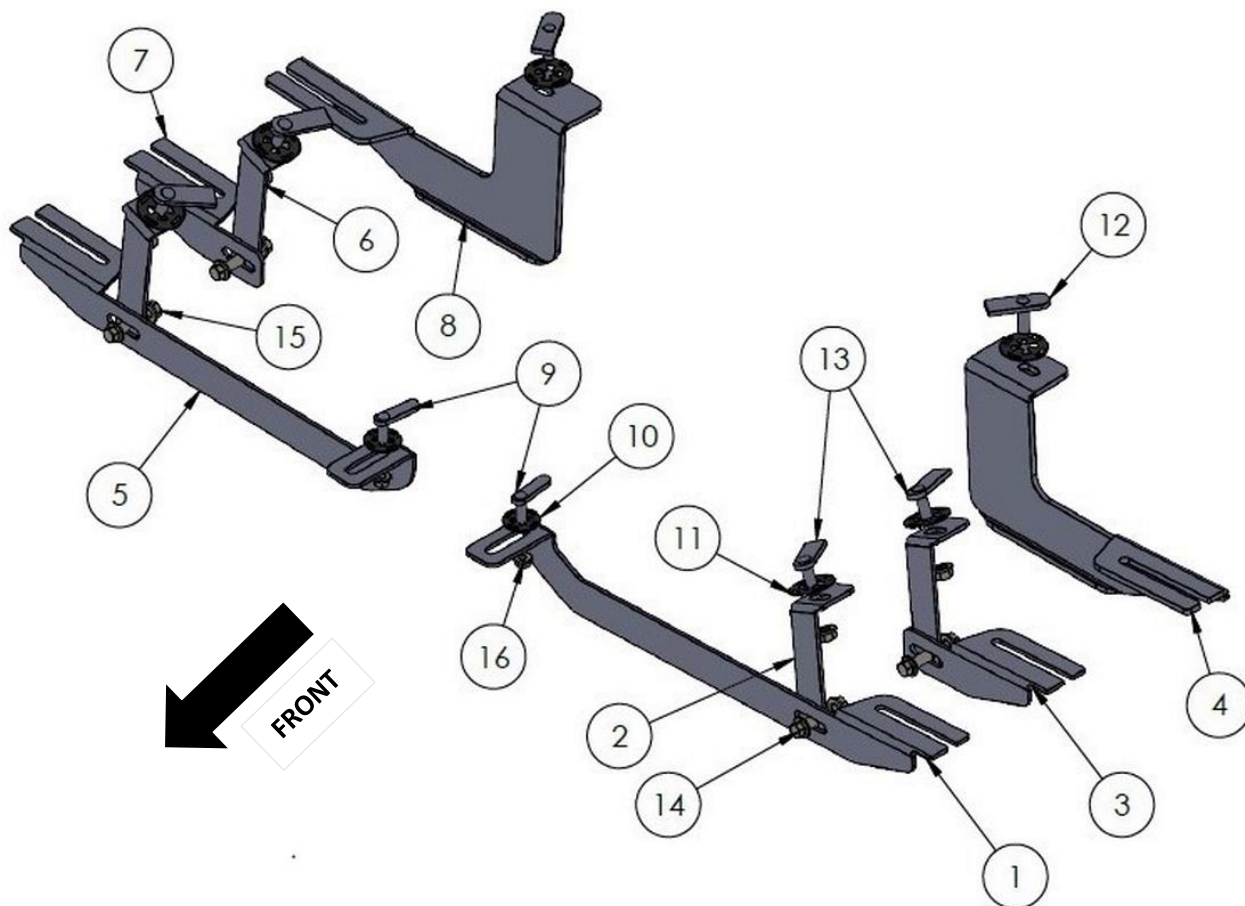
REV 5 09/18/23

Hardware	Torque Aluminum	Torque Steel to Steel
M6 Bolt	3 ft-lbs.	14 ft-lbs.
M8 Bolt	7 ft-lbs.	35 ft-lbs.
M10 Bolt	16 ft-lbs.	64 ft-lbs.
M12 Bolt	28 ft-lbs.	112 ft-lbs.

ATTENTION: Use correct torque settings to avoid damaging the running boards and or mounting brackets. Failure to do so will void your warranty. If you have any questions, please contact our technical team at 1-866-717-6645

Attention: Please make sure that you have the latest instructions from **Romik.com**

QR Scan



3944

1



DRIVER SIDE
FRONT BRACKET-F0
1 x QTY

2



DRIVER SIDE
FRONT-CENTER BRACKET-FC1
2 x QTY

3



DRIVER SIDE
CENTER BRACKET-C0
1 x QTY

4



DRIVER SIDE
BACK BRACKET-B0
1 x QTY

5



PASSENGER SIDE
FRONT BRACKET-F0
1 x QTY

6



PASSENGER SIDE
FRONT-CENTER BRACKET-FC1
2 x QTY

7



PASSENGER SIDE
CENTER BRACKET-C0
1 x QTY

8



PASSENGER SIDE
BACK BRACKET-B0
1 x QTY

HARDWARE

9



HTC 243 - M10x25
(4x12x50)
2x

10



HTC 269 - CLIPS
(M10)
2x

11



HTC 269 - CLIPS
(M10)
6x

12



HTC 238 - M10x25
(4x20x60)
2x

13



HTC 230 - M10x25
(5x20x60)
4x

14



M10x25
FLANGE BOLT
4x

15



M10
FLANGE NUT
10x

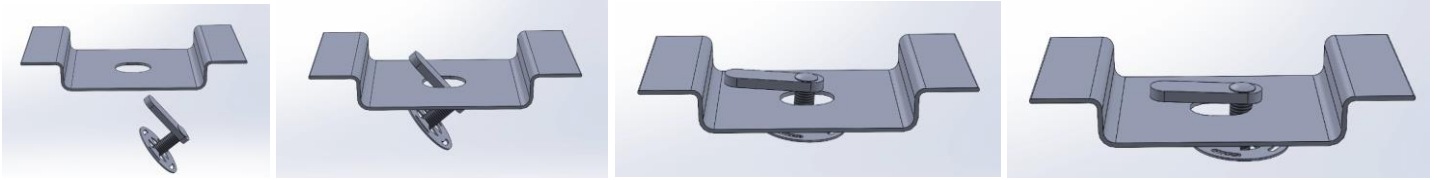
16



M10
FLANGE NUT
2x

Installation Instructions 3944 Bracket Kit

Important Install Tip: When installing Romik HTC inserts follow the sequence below. Make sure the HTC is seated correctly and do not use power tools as this will only spin the insert and possibly damage it. Test by tugging on it before installing bracket. Blue loctite is highly recommended on all metal parts.

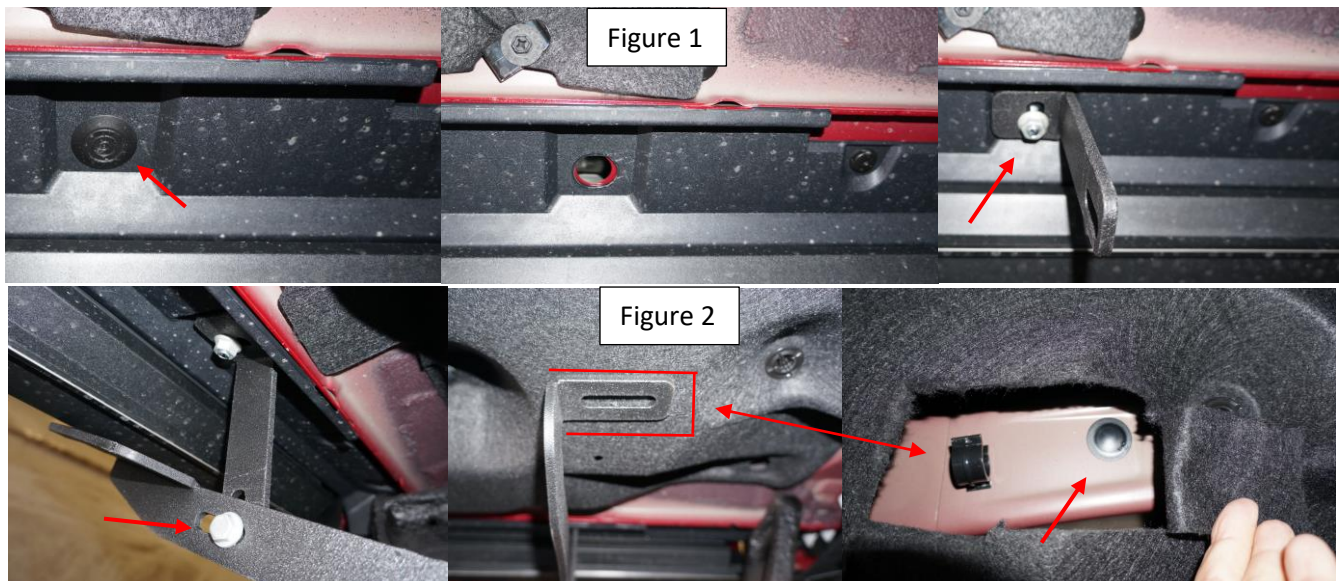


NOTE: This vehicle requires undercarriage trimming. For technical purposes we removed the panel to photograph the area. You do not have to remove entire panel. **ATTENTION: VISIBLE GAP DUE TO VEHICLE BODY DESIGN ONLY WHEN DOOR IS OPEN.** See images at www.Romik.com

Image below shows a 2024 Grand Highlander

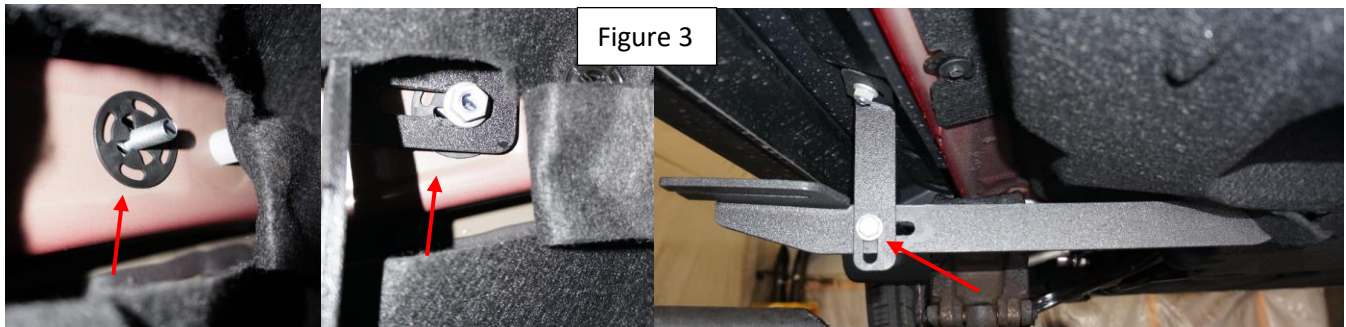


Step 1: Using the extra support as guide. Locate extra support mounting location Figure 1 (1st plug from front to rear) Install HTC 230 and attach front extra support #2. Using the main bracket cut out a 4x4 inch section and expose the install location Figure 2 this step shows driver's side.



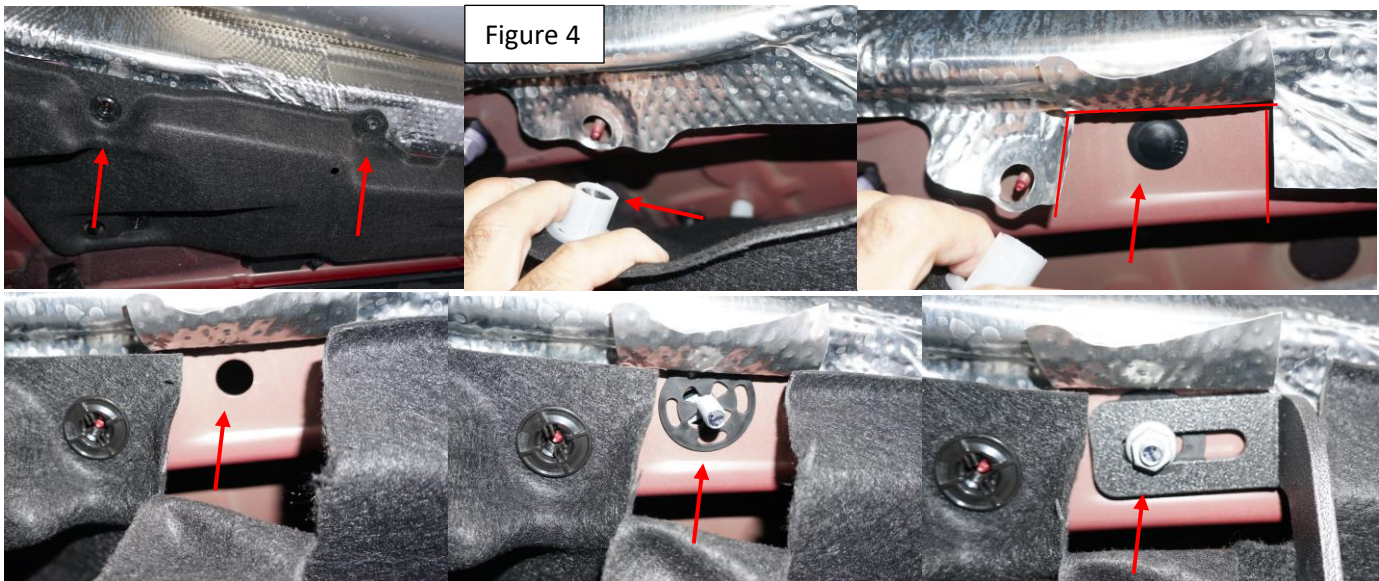
Installation Instructions 3944 Bracket Kit

Step 2: Remove factory rubber plug and install provided HTC 243 Figure 3. Attach the main front bracket as shown Figure 4. Make sure these are loose and do not tighten.

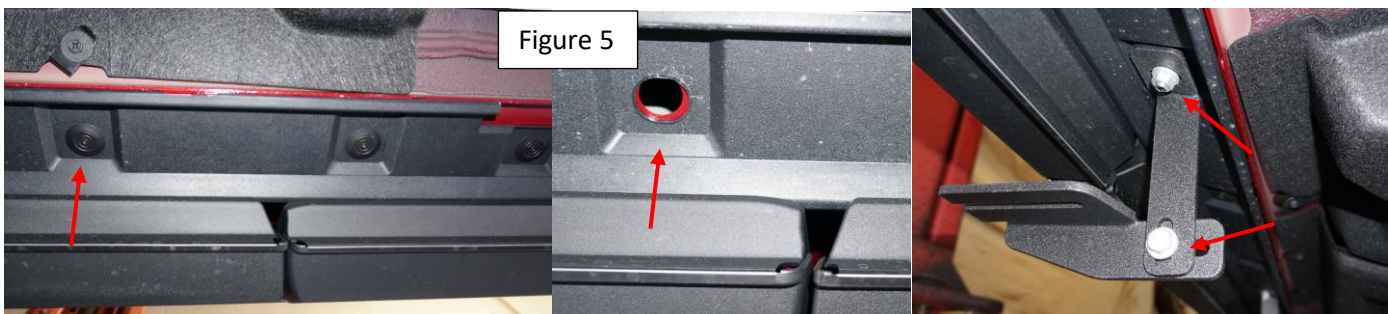


Pasenger side: The process is the same as driver's side.

Undo inner part of panel just enough to expose the mounting area. Pry down on the panel to expose tin shield. Trim a 3 x 4 area to expose the mouning position Figure 4. Install HTC 243 folowed by passenger side main bracket. Make sure these are loose and do not tighten.

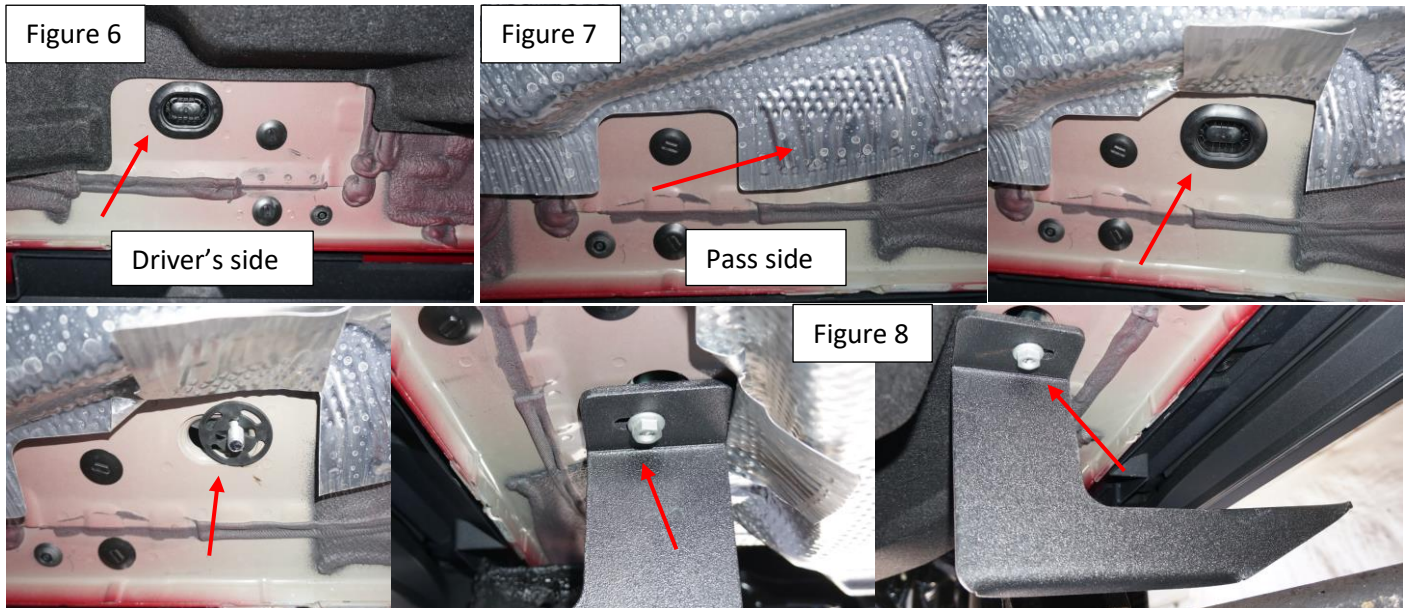


Step 4: Remove factory rubber plug (4th plug on panel) Figure 5 install provided HTC 243 and attach middle 2pc bracket as shown. Make sure these are loose and do not tighten.



Installation Instructions 3944 Bracket Kit

Step 5: Remove factory rubber plug Figure 6. Note on Grand Highlander models pass side a thin metal heat shield is present see Figure 7. Gently bend out of way or trim to install HTC. Install provided HTC 238 Install rear main bracket as show on Figure 8 Make sure these are loose and do not tighten.



Step 6: Proceed to last page of this manual for running board install instructions and torque values

For Technical support please call our team at 1-866-717-6645 and one of our experts will assist you with this installation.

Thank you for choosing Romik.

Installation Instructions Running Boards

NOTE: Use of power tools will damage the bottom of the running board and void your warranty.

Step 1: loosen the M8 hardware on back of the running boards.

Step 2: Slide running board onto brackets

Step 3: Tighten hardware to 7 ft lbs.

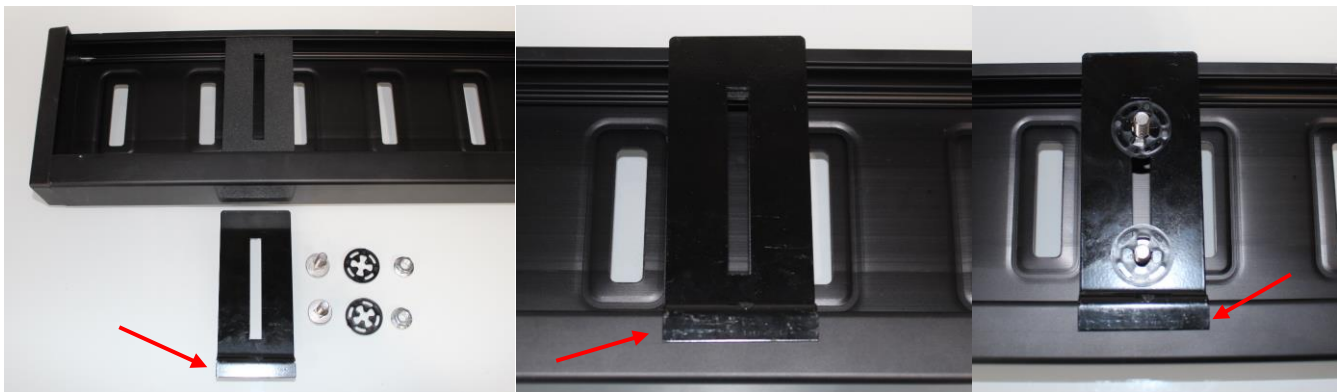


ROF/RPD/ROB Running boards

Step 1: Place clamping plate on top of running board as shown below. Make sure clamping plate sits correctly on running board surface.

Step 2: Install carriage bolts and plastic retaining clips as shown below.

Step 3: Install and tighten hardware to 7 ft lbs.



Product Registration and Warranty Information

- Register your Romik products at <https://romik.com/productregistration>
- Warranty information at <http://www.romik.com/warranty>

Cleaning and maintaining your Romik Running boards

Cleaning and maintaining your running boards is important, apply a light coat of a quality carnauba wax at least 2X per year. Wash often with mild soap and make sure to remove all soap residue. Many car automatic carwashes use a strong soap, make sure to use enough water to remove all residue.

For video instructions on how to clean your Romik products please click here <https://romik.com/cleaning>