



Installation Instructions

REV 4 05/01/2022

Part No. **2162v4**

Product: Running Boards

Application:

Ford Explorer 2020+

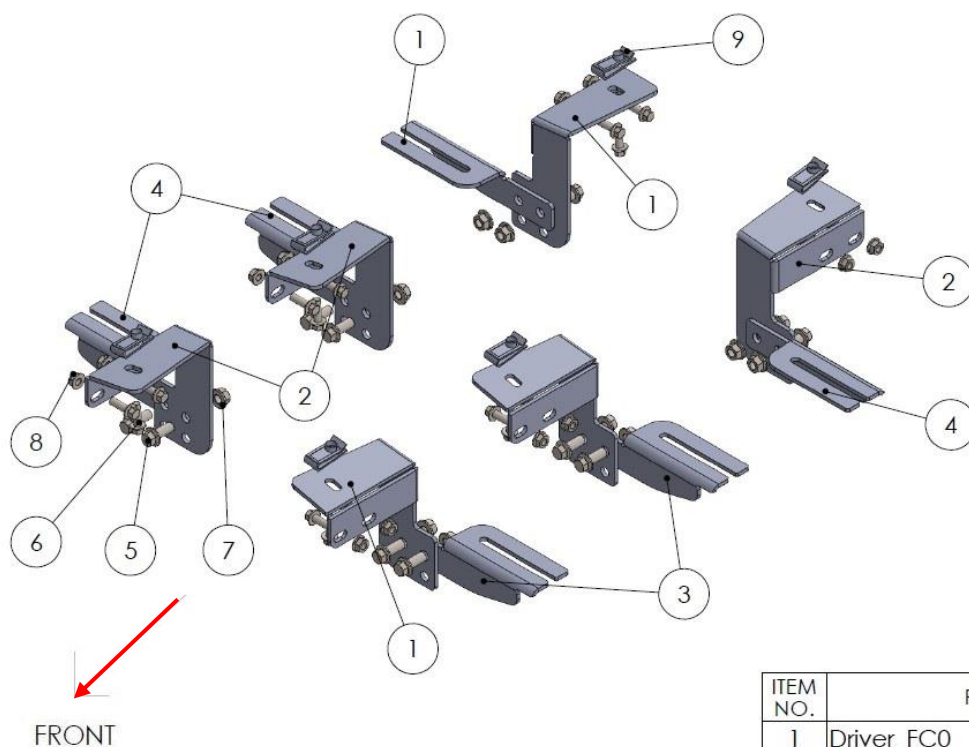
Lincoln Aviator 2020+

Level of Difficulty: **1** 2 3 4 5

Installation Time: 60 Min

Hardware	Torque Aluminum	Torque Steel to Steel
M6 Bolt	3 ft-lbs.	14 ft-lbs.
M8 Bolt	7 ft-lbs.	35 ft-lbs.
M10 Bolt	16 ft-lbs.	64 ft-lbs.
M12 Bolt	28 ft-lbs.	112 ft-lbs.

ATTENTION: Use correct torque settings to avoid damaging the running boards and or mounting brackets. Failure to do so will void your warranty. If you have any questions, please contact our technical team at 1-866-717-6645



ITEM NO.	PART NUMBER	QTY.
1	Driver_FC0	3
2	Driver_R0	1
3	Driver_FC1	2
4	Driver_R1	3
5	M10x25 - Hex Flange Screw	12
6	M8x25 - Hex Flange Screw	18
7	M10 - Hex Flange Nut	12
8	M8 - Hex flange nut	12
9	HTC 308 - M8 U-NUT	6

2162 - EXPLORER [20+]



1
DRIVER SIDE FRONT-MIDDLE
PASSENGER SIDE REAR
BRACKET
3 x QTY



2
PASSENGER SIDE FRONT-MIDDLE
DRIVER SIDE REAR
BRACKET
3 x QTY



3
DRIVER SIDE FRONT-MIDDLE
PASSENGER SIDE REAR
BRACKET
3 x QTY



4
PASSENGER SIDE FRONT-MIDDLE
DRIVER SIDE REAR
BRACKET
3 x QTY

HARDWARE



5
M8x25
HEX FLANGE BOLT
18x



6
M8 HEX FLANGE
NUT
12x



7
M10 HEX
FLANGE NUT
12x



8
M10x25
HEX FLANGE BOLT
12x

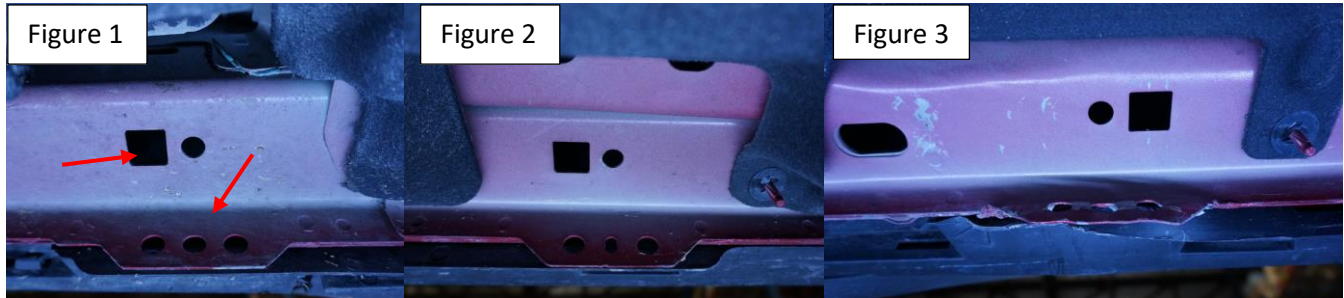


9
HTC 308
M8 U NUT
6x

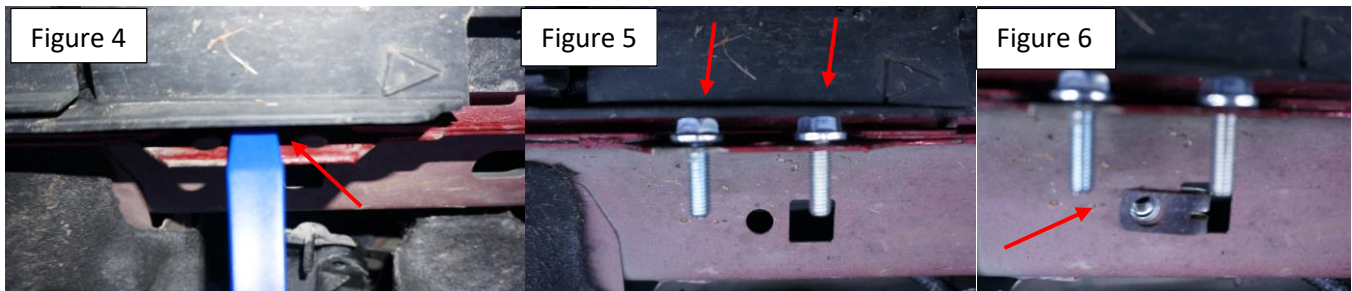
Installation Instructions 2162 v3 Bracket Kit

Important Install Tip: Blue loctite is highly recommended.

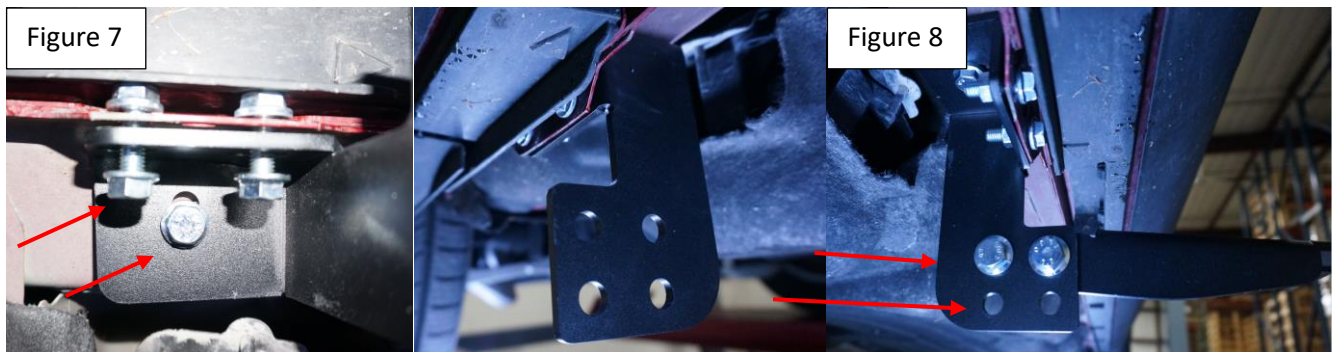
Step 1: Locate bracket mounting positions. These are all the same on all 3 mounting points. Figure 1 is front drivers Figure 3 is rear drivers. Note mounting points.



Step 2: Pry back the plastic panel enough to allow for two M8 bolts to be inserted into position Figure 1 and 2. Install provided M8 U-Nut #8 into opening Figure 6.



Step 3: Install main bracket using supplied hardware Figure 7. Do not tighten. Install attaching bracket on the corresponding hole. If you are working on a Ford Explorer, use the upper holes. Lincoln Aviator use lower holes Figure 8. Do not tighten. Repeat on all 3 positions.



Step 4: Proceed to last page of this manual for running board install instructions and torque values
For Technicall support please call our team at 1-866-717-6645 and one of our experts will assist you with this installation

Thank you for choosing Romik

Running Board Installation Instructions

NOTE: Use of power tools will damage the bottom of the running board and void your warranty.



RAL / RB2 / REC / RCV / RZR



ROB / ROF / RPD

- 1) Flip your Romik running boards onto a flat surface, make sure to place the running boards on a towel or cardboard in order to protect the surface Figure 1.
- 2) Loosen the M8 bolts on back of your running boards Figure 2. Depending on your model there will be either 6 or 8 bolts installed per side.
- 3) Once your brackets have been installed, place the running board onto the brackets as shown on Figure 3.
- 4) Adjust running boards, centering on vehicle. Hand tight M8 hardware on running boards.
- 5) Follow the torque procedures, torque M8 hardware to **7 ft-lbs** using a torque wrench.
- 6) Cleaning and maintaining your running boards is important, apply a light coat of a quality carnauba wax at least 2X per year. Wash often with mild soap and make sure to remove all soap residue. Many car automatic carwashes use a strong soap, make sure to use enough water to remove all residue.
- 7) Register your products at <https://romik.com/productregistration>
- 8) Warranty information at www.Romik.com/warranty