



Installation Instructions

Part No. **2154 V2**

Product: Running Boards

Application: **Ford Bronco 2DR 2021+**

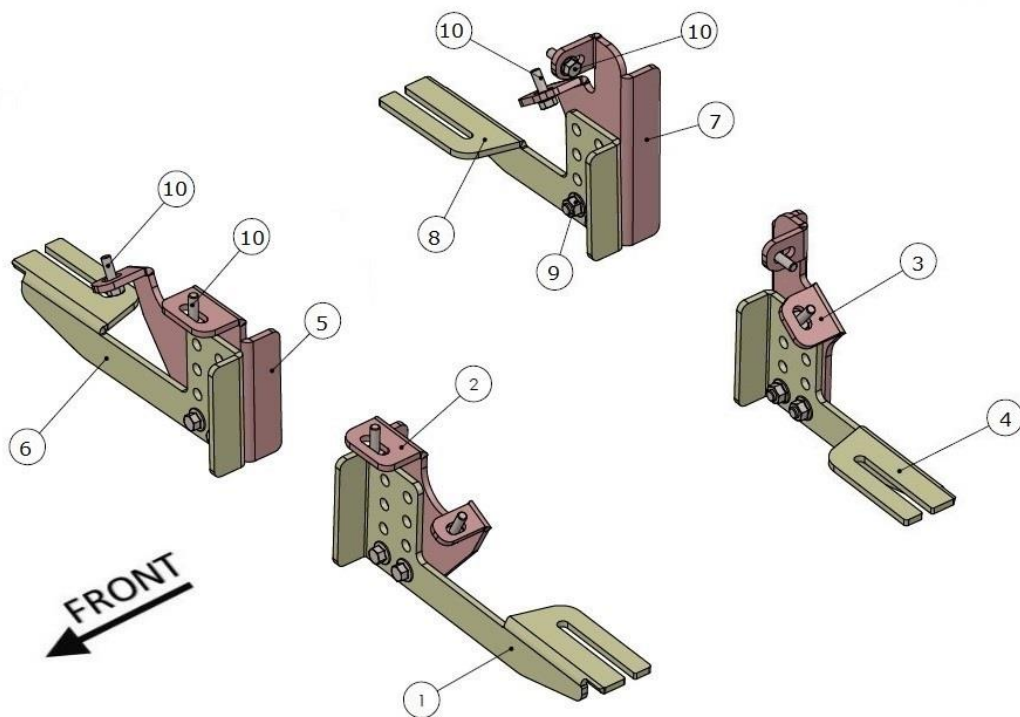
Level of Difficulty: **1** 2 3 4 5

Installation Time: 60 Min

REV 5 08/01/22

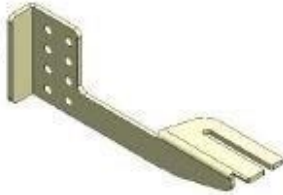
Hardware	Torque Aluminum	Torque Steel to Steel
M6 Bolt	3 ft-lbs.	14 ft-lbs.
M8 Bolt	7 ft-lbs.	35 ft-lbs.
M10 Bolt	16 ft-lbs.	64 ft-lbs.
M12 Bolt	28 ft-lbs.	112 ft-lbs.

ATTENTION: Use correct torque settings to avoid damaging the running boards and or mounting brackets. Failure to do so will void your warranty. If you have any questions, please contact our technical team at 1-866-717-6645



2154 V2

1



DRIVER SIDE
FRONT BRACKET-1
1 x QTY

2



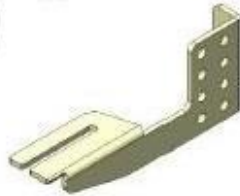
DRIVER SIDE
FRONT BRACKET-2
1 x QTY

3



DRIVER SIDE
REAR BRACKET-1
1 x QTY

4



DRIVER SIDE
REAR BRACKET-2
1 x QTY

5



PASSENGER SIDE
FRONT BRACKET-1
1 x QTY

6



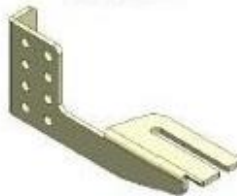
PASSENGER SIDE
FRONT BRACKET-2
1 x QTY

7



PASSENGER SIDE
REAR BRACKET-1
1 x QTY

8



PASSENGER SIDE
REAR BRACKET-2
1 x QTY

HARDWARE

9



M10 HEX
FLANGE NUT
8X

10



M10x25 HEX
FLANGE BOLT
16X

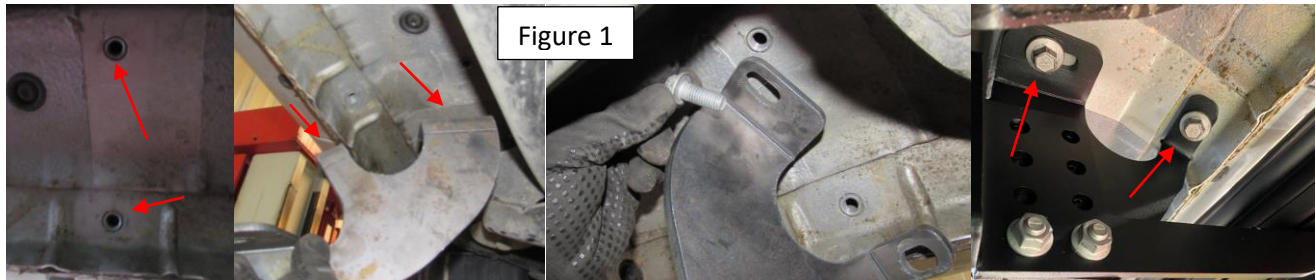
Installation Instructions “DRP” 2154 V2 Bracket Kit

Thank you for choosing the Romik DRP System. This system allows you to adjust the brackets from 0 to 3-inch drop. If you ordered the optional DRP cover you can customize them to match the desired height by cutting on the lines inside the cover. Please test before cutting, in many cases you will be able to tuck the cover behind the body of the vehicle without cutting. NOTE: **Blue Loctite is recommended on all metal parts**

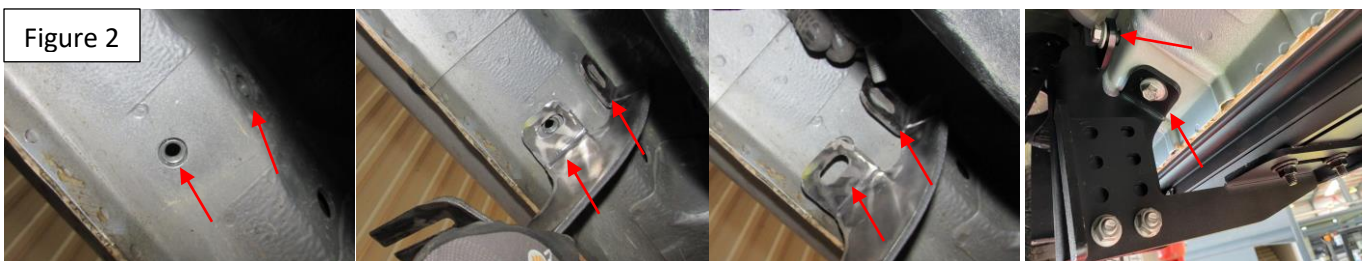


NOTE: Bronco Models, if equipped with factory rock sliders, removal is necessary in order to install Romik running boards.

Step 1: Locate front mounting points Figure 1, remove factory bolts and keep them as they will be reused to install the bracket. Assemble DRP bracket and set to desired height. Install front bracket using supplied #10 hardware. Do not tighten.



Step 2 Install rear bracket using supplied #10 hardware Figure 2. Do not tighten.



Step 3: Torque #10 bolts to 64 lbs. Install DRP covers on brackets. Now proceed to last page of this manual for running board install instructions and torque values. Use of a level is recommended.

NOTE: DRP system is designed to assist you getting in and out of the vehicle. However the lower you place the brackets the lower the weight rating. For maximum weight capacity use DRP brackets at zero.

For Technical support please call our team at 1-866-717-6645 and one of our experts will assist you with this installation.

Thank you for choosing Romik.

Installation Instructions Running Boards

NOTE: Use of power tools will damage the bottom of the running board and void your warranty.

Step 1: loosen the M8 hardware on back of the running boards.

Step 2: Slide running board onto brackets

Step 3: Tighten hardware to 7 ft lbs.



ROF/RPD/ROB Running boards

Step 1: Place clamping plate on top of running board as shown below.

Step 2: Install carriage bolts and plastic retaining clips as shown below.

Step 3: Install and tighten hardware to 7 ft lbs.



Product Registration and Warranty Information

- Register your Romik products at <https://romik.com/productregistration>
- Warranty information at <http://www.romik.com/warranty>

Cleaning and maintaining your Romik Running boards

Cleaning and maintaining your running boards is important, apply a light coat of a quality carnauba wax at least 2X per year. Wash often with mild soap and make sure to remove all soap residue. Many car automatic carwashes use a strong soap, make sure to use enough water to remove all residue.

For video instructions on how to clean your Romik products please click here <https://romik.com/cleaning>