



Installation Instructions

Part No. **3211 / 3242**

Product: Running Boards

Application:

Nissan Frontier 2005 - Present

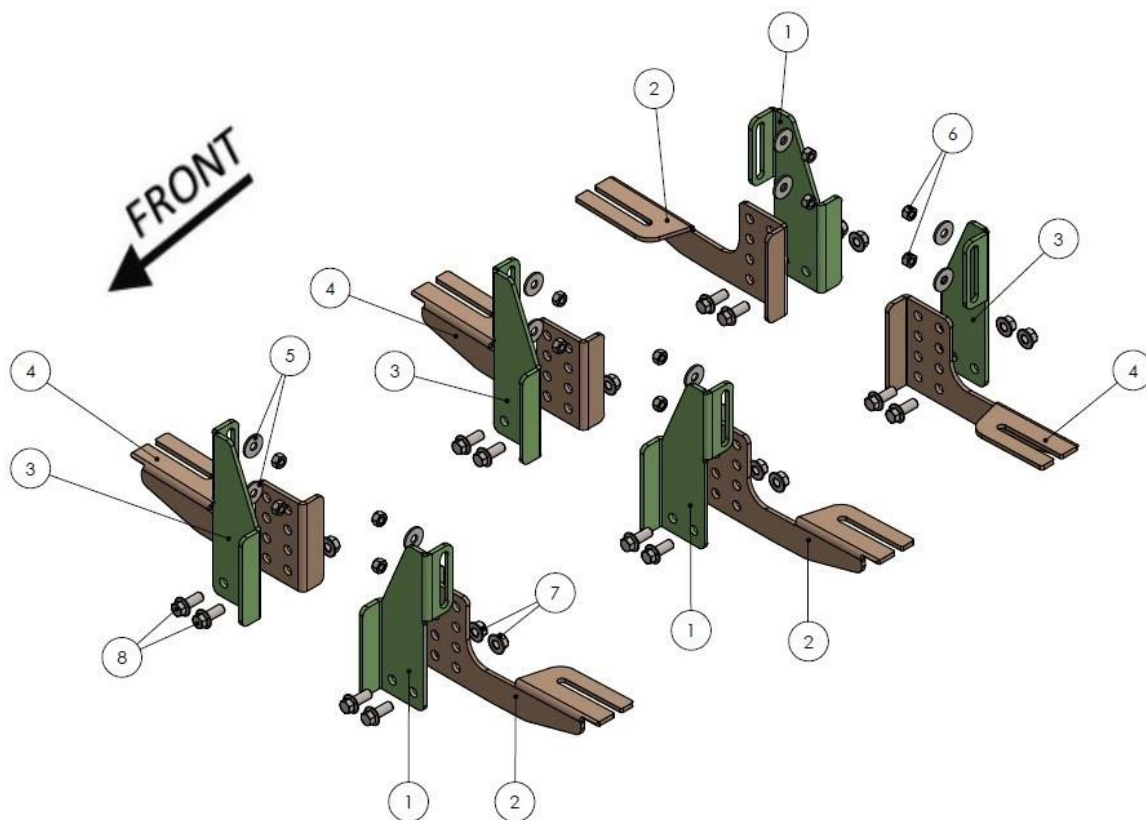
Level of Difficulty: **1** 2 3 4 5

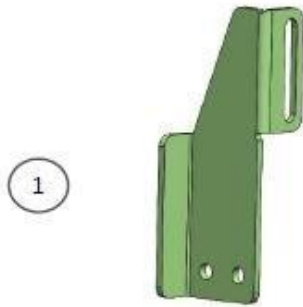
Installation Time: 60 Min

REV 4 05/01/22

Hardware	Torque Aluminum	Torque Steel to Steel
M6 Bolt	3 ft-lbs.	14 ft-lbs.
M8 Bolt	7 ft-lbs.	35 ft-lbs.
M10 Bolt	16 ft-lbs.	64 ft-lbs.
M12 Bolt	28 ft-lbs.	112 ft-lbs.

ATTENTION: Use correct torque settings to avoid damaging the running boards and or mounting brackets. Failure to do so will void your warranty. If you have any questions, please contact our technical team at 1-866-717-6645





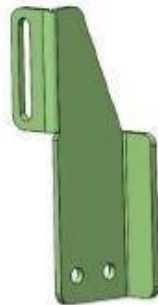
1

DRIVER SIDE FRONT-CENTER /
PASSENGER SIDE REAR BRACKET
3 x QTY



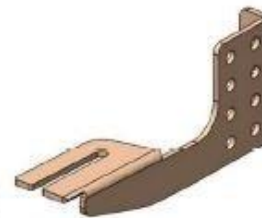
2

DRIVER SIDE FRONT-CENTER /
PASSENGER SIDE REAR BRACKET
3 x QTY



3

PASSENGER SIDE FRONT-CENTER /
DRIVER SIDE REAR BRACKET
3 x QTY



4

PASSENGER SIDE FRONT-CENTER /
DRIVER SIDE REAR BRACKET
3 x QTY

HARDWARE



5

M8 – Plain Washer
12x



6

M8 HEX FLANGE
NUT
12x



13

M10 – Hex Flange Nut
12x



14

M10x25 Hex Flange Bolt
12x

Installation Instructions 3211 / 3242 “DRP” Bracket Kit

Thank you for choosing the Romik DRP System. This system allows you to adjust the brackets from 0 to 3-inch drop. If you ordered the **optional** DRP cover you can customize them to match the desired height by cutting on the lines inside the cover. Please test before cutting, in many cases you will be able to tuck the cover behind the body of the vehicle without cutting. NOTE: **Blue Loctite is recommended on all metal parts**



Step 1: Pre-Assemble DRP bracket and set to desired height. Do not tighten.

Step 2: Locate factory studs on vehicle. Clean threads if needed and install corresponding brackets according to diagram on page 1.



Step 3: Install optional DRP covers on brackets. Torque #6 M8 nuts to 35 lbs. Torque #14 bolts to 64 lbs proceed to last page of this manual for running board install instructions and torque values. Use of a level is recommended.

NOTE: DRP system is designed to assist you getting in and out of the vehicle. However the lower you place the brackets the lower the weight rating. For maximum weight capacity use DRP brackets at zero.

For Technical support please call our team at 1-866-717-6645 and one of our experts will assist you with this installation.

Thank you for choosing Romik.

Installation Instructions Running Boards

NOTE: Use of power tools will damage the bottom of the running board and void your warranty.

Step 1: loosen the M8 hardware on back of the running boards.

Step 2: Slide running board onto brackets

Step 3: Tighten hardware to 7 ft lbs.



ROF/RPD/ROB Running boards

Step 1: Place clamping plate on top of running board as shown below.

Step 2: Install carriage bolts and plastic retaining clips as shown below.

Step 3: Install and tighten hardware to 7 ft lbs.



Product Registration and Warranty Information

- Register your Romik products at <https://romik.com/productregistration>
- Warranty information at <http://www.romik.com/warranty>

Cleaning and maintaining your Romik Running boards

Cleaning and maintaining your running boards is important, apply a light coat of a quality carnauba wax at least 2X per year. Wash often with mild soap and make sure to remove all soap residue. Many car automatic carwashes use a strong soap, make sure to use enough water to remove all residue.

For video instructions on how to clean your Romik products please click here <https://romik.com/cleaning>