



Installation Instructions

REV 3 03/01/23

Part No. **2334**

Product: Running Boards

Application: **Hyundai Tucson 2022 – Present.**

Hyundai Santa Cruz 2022 – Present.

Kia Sportage 2023 – Present.

Level of Difficulty: 1 2 **3** 4 5

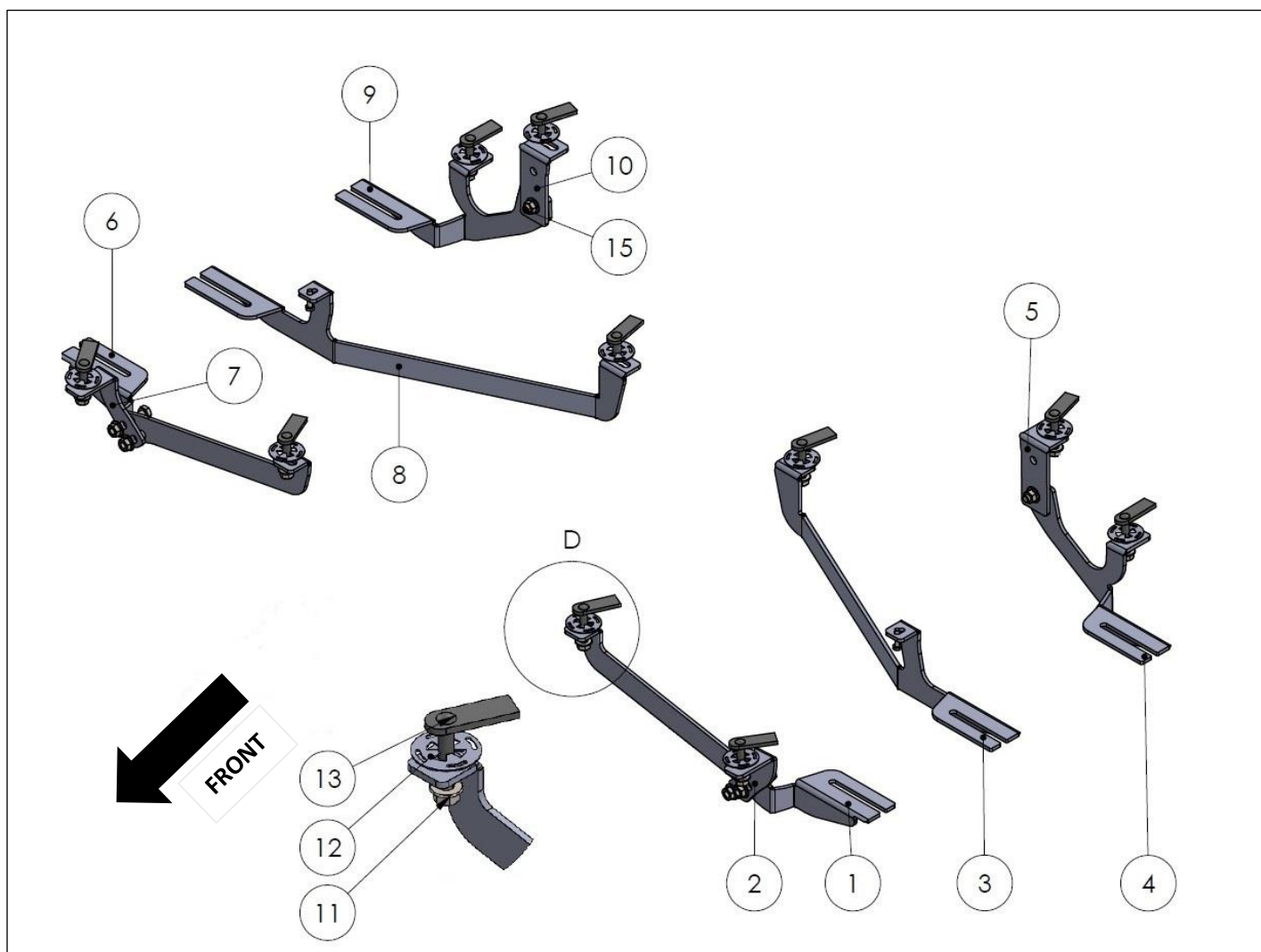
Installation Time: 90 Min.

Hardware	Torque Aluminum	Torque Steel to Steel
M6 Bolt	3 ft-lbs.	14 ft-lbs.
M8 Bolt	7 ft-lbs.	35 ft-lbs.
M10 Bolt	16 ft-lbs.	64 ft-lbs.
M12 Bolt	28 ft-lbs.	112 ft-lbs.

ATTENTION: Use correct torque settings to avoid damaging the running boards and or mounting brackets. Failure to do so will void your warranty. If you have any questions, please contact our technical team at 1-866-717-6645

Attention: Please make sure that you have the latest instructions from **Romik.com**

QR Scan



2334 -V3



2334v2850F0
DRIVER SIDE
FRONT BRACKET
1 x QTY



2334v2850F1
DRIVER SIDE SUPPORT
FRONT BRACKET
1 x QTY



2334v2850C0
DRIVER SIDE
MIDDLE BRACKET
1 x QTY



2334v2850R0
DRIVER SIDE
REAR BRACKET
1 x QTY



2334v2850R1
DRIVER SIDE SUPPORT
REAR BRACKET
1 x QTY



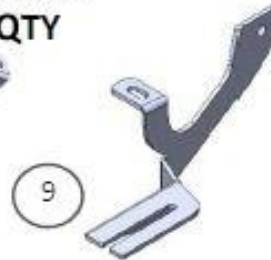
2334v2850F0
PASSENGER SIDE
FRONT BRACKET
1 x QTY



2334v2850F1
PASSENGER SIDE SUPPORT
FRONT BRACKET
1 x QTY



2334v2850C0
PASSENGER SIDE
MIDDLE BRACKET
1 x QTY

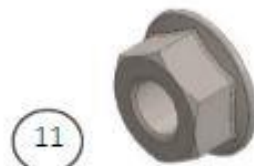


2334v2850R0
PASSENGER SIDE
REAR BRACKET
1 x QTY



2334v2850R1
PASSENGER SIDE SUPPORT
REAR BRACKET
1 x QTY

HARDWARE



M10 FLANGE
NUT
16x



HTC269
CLIPS M10
10x



HTC 230 - M10x25
5x20x60
10x



M6x25
FLANGE BOLT
2x

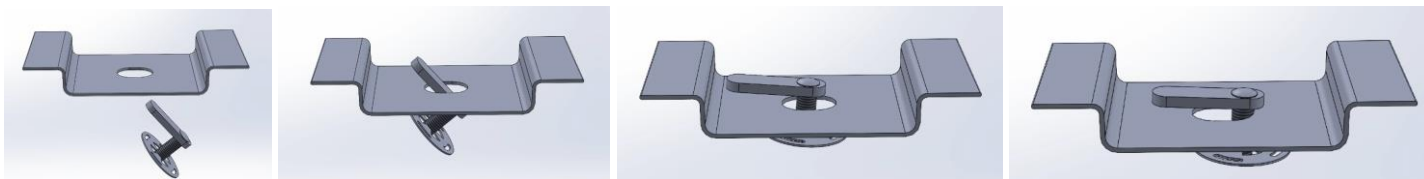


M10x25
FLANGE BOLT
6x

Installation Instructions 2334 Bracket Kit

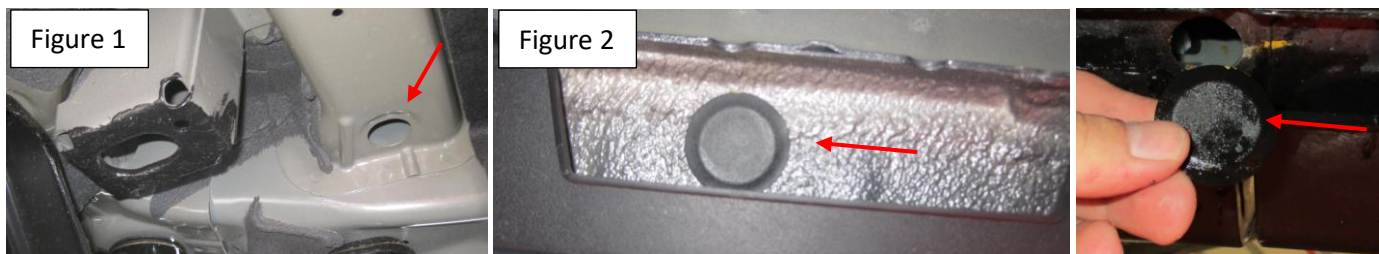
NOTE: This product does not fit Plug-In Hybrid models.

Important Install Tip: When installing Romik HTC inserts follow the sequence below. Make sure the HTC is seated correctly and do not use power tools as this will only spin the insert and possibly damage it. Test by tugging on it before installing bracket. Blue loctite is highly recommended on all metal parts.

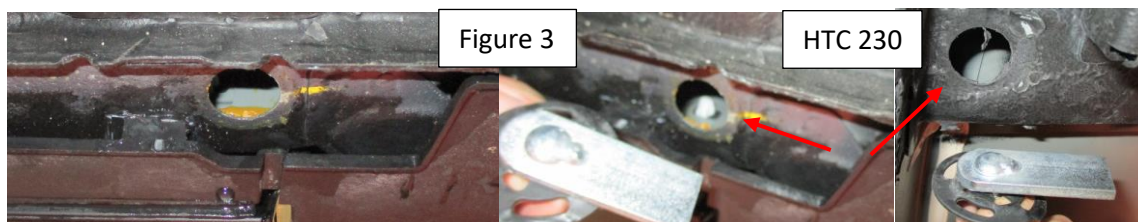


NOTE: Middle bracket requires undercarriage panel trimming please see step 4.

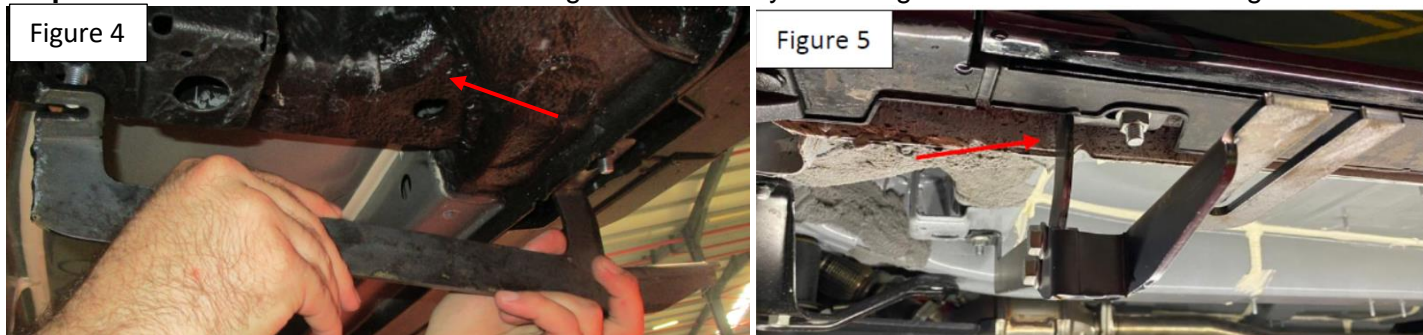
Step 1: Locate front mounting locations and hardware as per 1st page of this installation manual. Remove factory rubber plug as shown on Figure 2. Pre-assemble front bracket. NOTE Hyundai models support #2 Driver, #7 passenger assemble as shown on page 1. Kia Sportage models assemble as shown below Figure 5.



Step 2: Install HTC 230 on both front mounting positions. Hint: tug on HTC once installed to make sure it is seated correctly. Figure 3



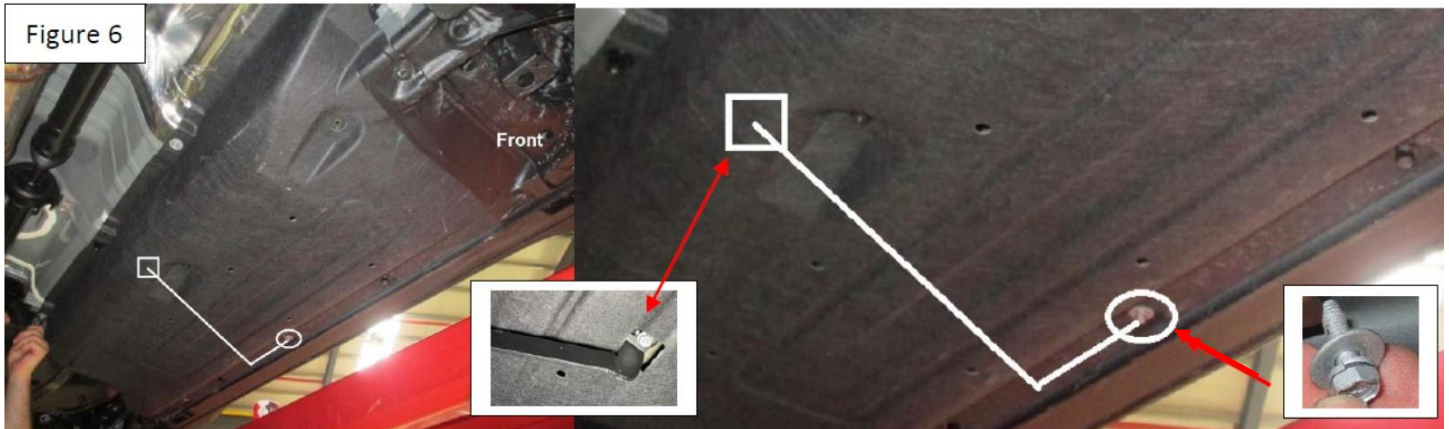
Step 3: Install front bracket as shown on Figure 4 shows Hyundai. Figure 5 shows Kia. Do not tighten.



Installation Instructions 2334 Bracket Kit

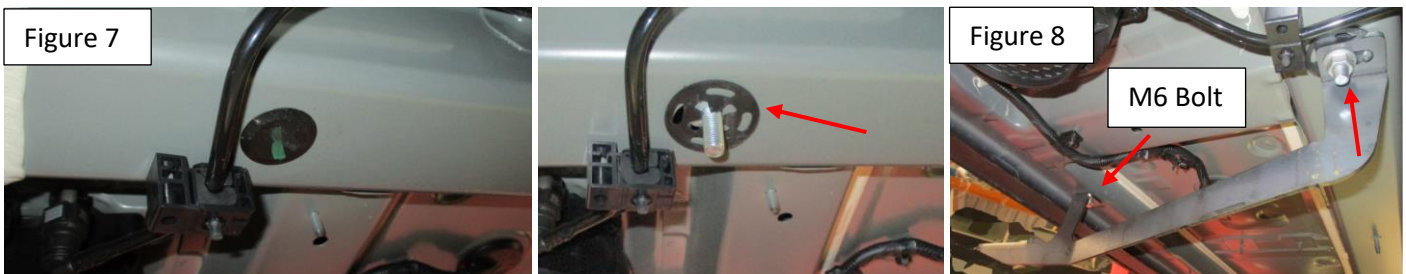
Step 4: Please measure before cutting, Remove factory bolt as shown Figure 6. Front this point measure 7.25 inches towards the rear than measure 14.50 inches towards the center of the vehicle. Cut a 2 inch square.

HINT: Mock install middle bracket only using the outer bolt. This will bring you to the proper area to cut.

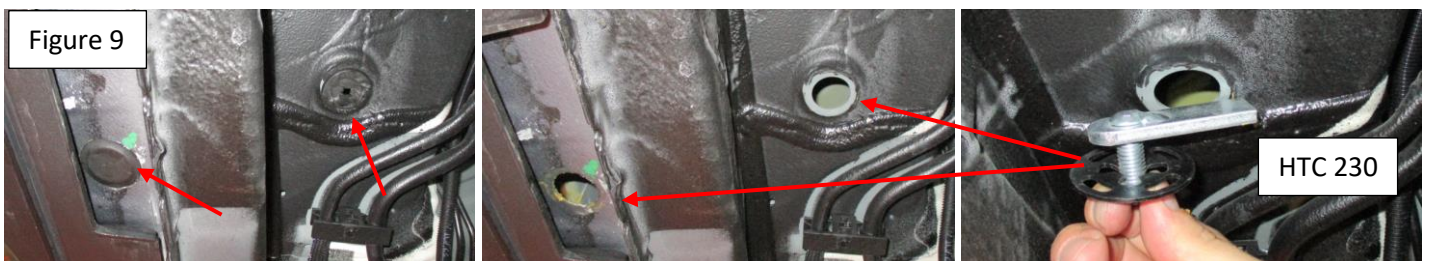


NOTE: For illustration purposes the panel was removed in order to show the mounting points

Step 5: Remove factory rubber plug as shown Figure 7. Install provided HTC 230. Install middle bracket with provided hardware as shown Figure 8. Do not tighten.

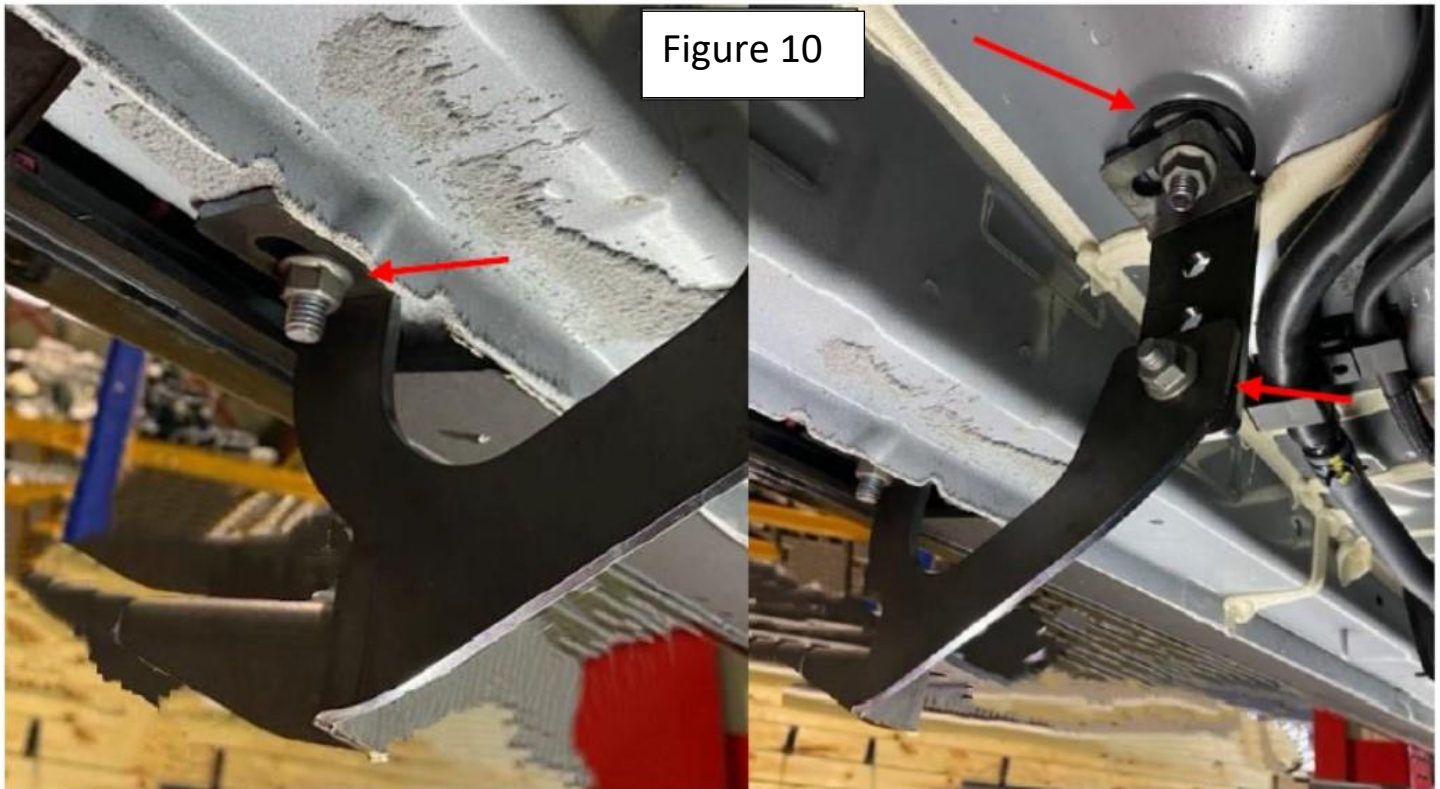


Step 6: Locate rear bracket mounting area and remove factory rubber plugs as shown Figure 9. Install provided HTC 230.



Installation Instructions 2334 Bracket Kit

Step 7: Pre-Assemble rear bracket, Hyundai Santa Cruz uses lower holes on rear support #5 and #10. Tucson and Sportage use middle hole. Install rear bracket as shown on Figure 10. Do not tighten.



Step 8: Repeat steps on opposite side.

Step 9: Proceed to last page of this manual for running board install instructions and torque values

For Technical support please call our team at 1-866-717-6645 and one of our experts will assist you with this installation

Thank you for choosing Romik.

Installation Instructions Running Boards

NOTE: Use of power tools will damage the bottom of the running board and void your warranty.

Step 1: loosen the M8 hardware on back of the running boards.

Step 2: Slide running board onto brackets

Step 3: Tighten hardware to 7 ft lbs.

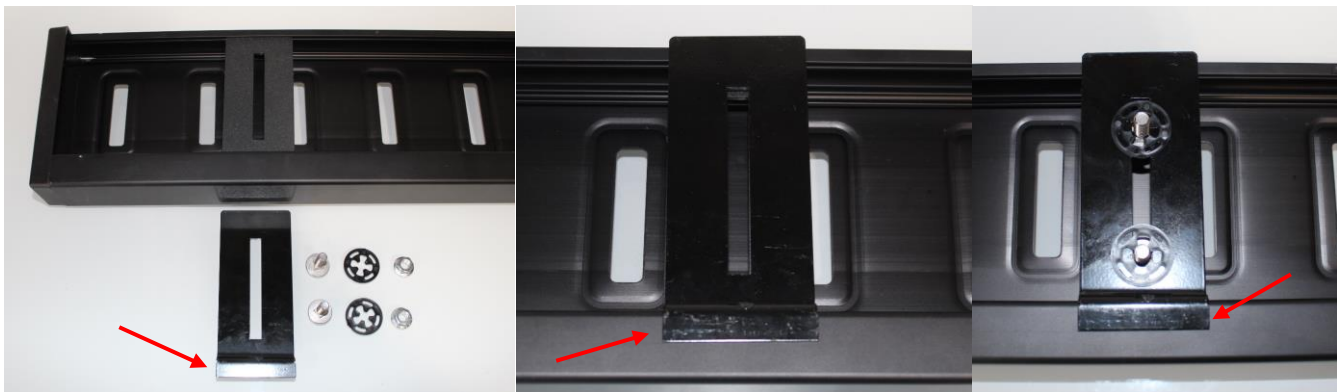


ROF/RPD/ROB Running boards

Step 1: Place clamping plate on top of running board as shown below. Make sure clamping plate sits correctly on running board surface.

Step 2: Install carriage bolts and plastic retaining clips as shown below.

Step 3: Install and tighten hardware to 7 ft lbs.



Product Registration and Warranty Information

- Register your Romik products at <https://romik.com/productregistration>
- Warranty information at <http://www.romik.com/warranty>

Cleaning and maintaining your Romik Running boards

Cleaning and maintaining your running boards is important, apply a light coat of a quality carnauba wax at least 2X per year. Wash often with mild soap and make sure to remove all soap residue. Many car automatic carwashes use a strong soap, make sure to use enough water to remove all residue.

For video instructions on how to clean your Romik products please click here <https://romik.com/cleaning>