

# ROMIK

## Installation Instructions

Part No. **2625**

Product: Running Boards

Application: (Except Grand Cherokee 4xe )

**Jeep Grand Cherokee WL (7-seater) 2021 – Present**

**Jeep Grand Cherokee (5-seater) 2022 – Present**

Level of Difficulty: 1 2 **3** 4 5

**Professional Installation Time: 90 Min.**

**DIY Installation Time: 180 Min**

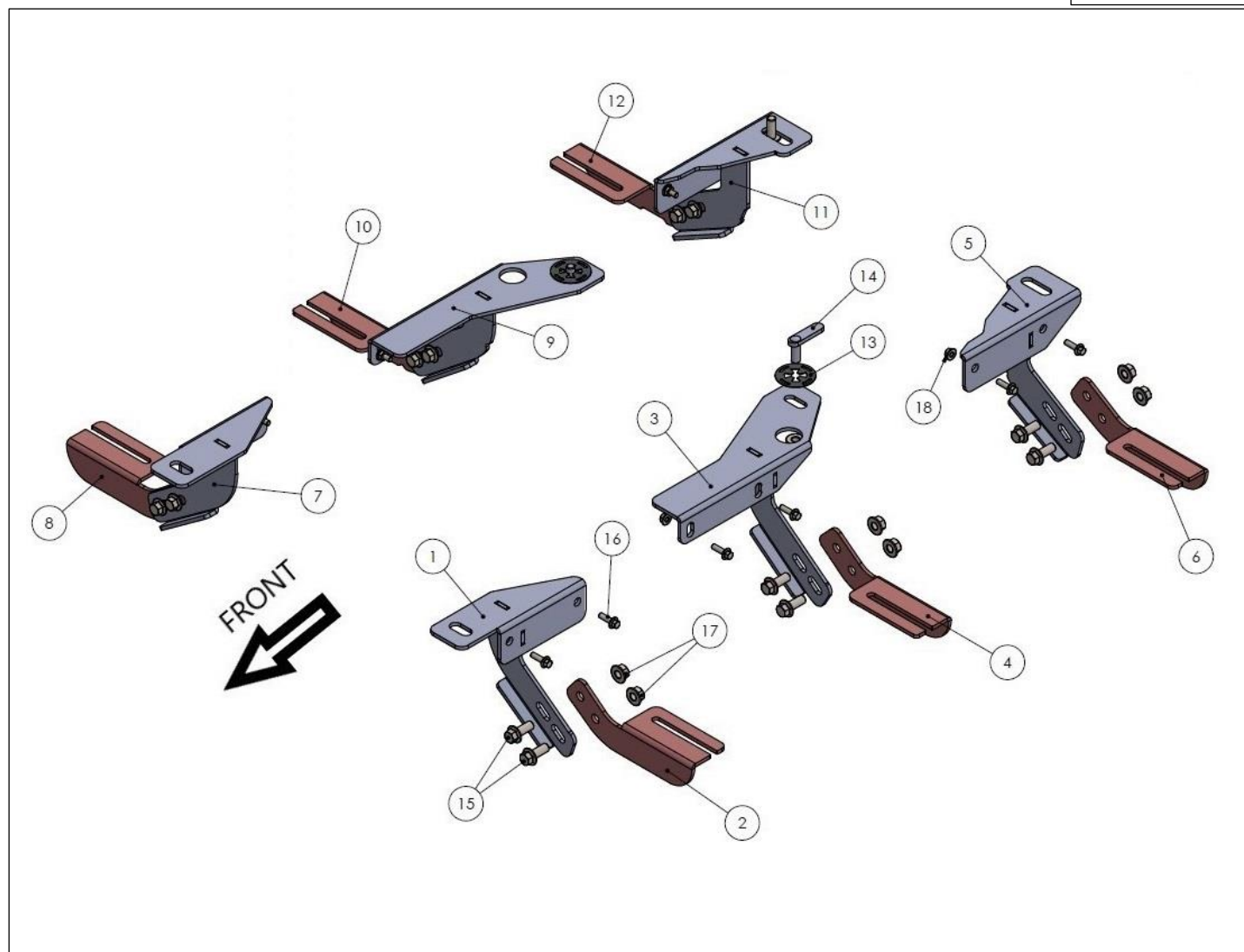
REV 3 04/21/25

Hardware	Torque Aluminum	Torque Steel to Steel
M6 Bolt	3 ft-lbs.	14 ft-lbs.
M8 Bolt	7 ft-lbs.	35 ft-lbs.
M10 Bolt	16 ft-lbs.	64 ft-lbs.
M12 Bolt	28 ft-lbs.	112 ft-lbs.

**ATTENTION:** Use correct torque settings to avoid damaging the running boards and or mounting brackets. Failure to do so will void your warranty. If you have any questions, please contact our technical team at 1-866-717-6645

**Attention:** Please make sure that you have the latest instructions from *Romik.com*

QR Scan



## 2625

1



DRIVER SIDE  
FRONT BRACKET-1  
**1 x QTY**

2



DRIVER SIDE  
FRONT BRACKET-2  
**1 x QTY**

3



DRIVER SIDE  
CENTER BRACKET-1  
**1 x QTY**

4



DRIVER SIDE  
CENTER BRACKET-2  
**1 x QTY**

5



DRIVER SIDE  
REAR BRACKET-1  
**1 x QTY**

6



DRIVER SIDE  
REAR BRACKET-2  
**1 x QTY**

7



PASSENGER SIDE  
FRONT BRACKET-1  
**1 x QTY**

8



PASSENGER SIDE  
FRONT BRACKET-2  
**1 x QTY**

9



PASSENGER SIDE  
CENTER BRACKET-1  
**1 x QTY**

10



PASSENGER SIDE  
CENTER BRACKET-2  
**1 x QTY**

11



PASSENGER SIDE  
REAR BRACKET-1  
**1 x QTY**

12



PASSENGER SIDE  
REAR BRACKET-2  
**1 x QTY**

## HARDWARE

13



HTC 269 – CLIPS (M10)  
**2x**

14



HTC 243 – M10x25 (4x12x50)  
**2x**

15



M10x25 FLANGE BOLT  
**14x**

16



M6x20 FLANGE BOLT  
**12x**

17



M10 FLANGE NUT  
**14x**

18

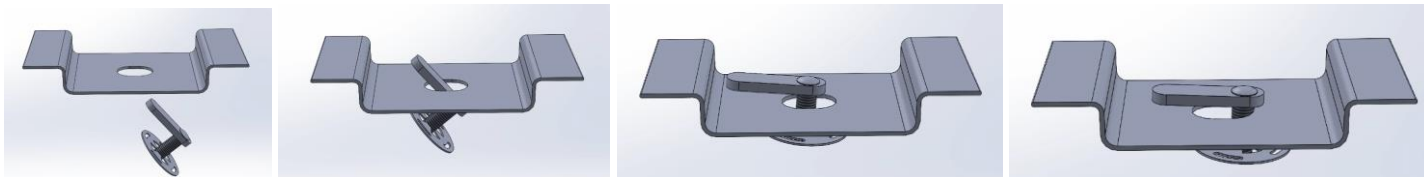


M6 FLANGE NUT  
**12x**

# Installation Instructions 2625 Bracket Kit

## **NOTE: Does not fit Grand Cherokee 4xe**

**Important Install Tip:** When installing Romik HTC inserts follow the sequence below. Make sure the HTC is seated correctly and do not use power tools as this will only spin the insert and possibly damage it. Test by tugging on it before installing bracket. Blue loctite is highly recommended on all metal parts.



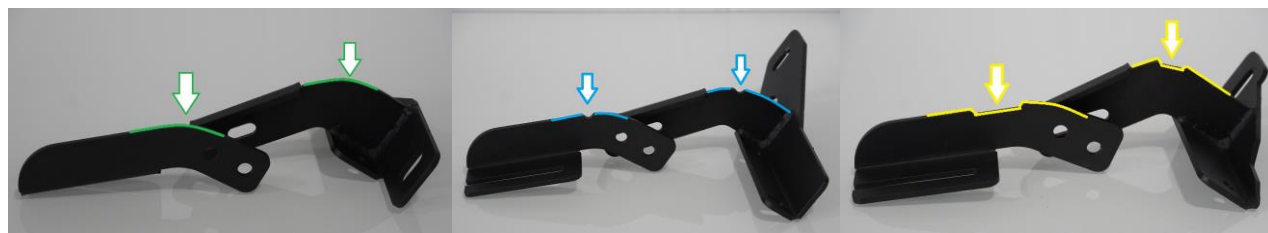
**NOTE: Underbody felt panel trimming required. Visible gap between body and running board due to vehicle design**

**Step 1:** Organize the brackets in the following sequence. Note markings on all brackets.

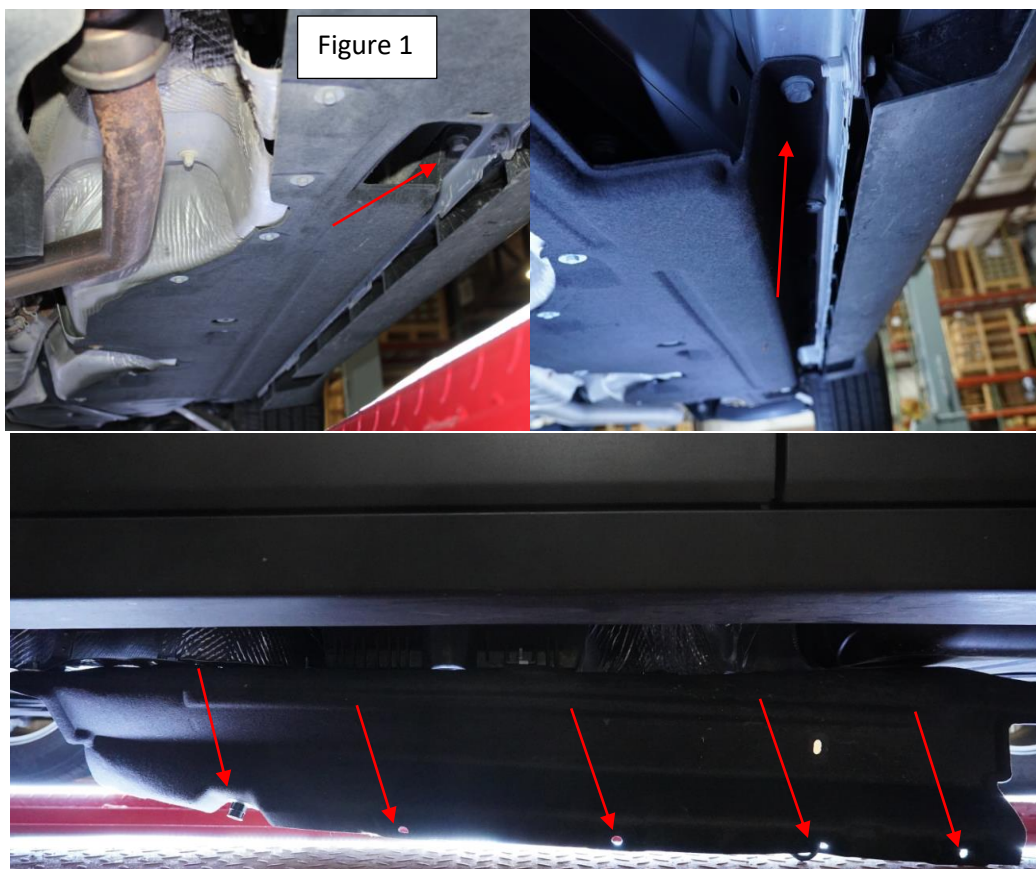
**Front brackets are smooth**

**Middle brackets have a V cut**

**Rear brackets have a square cut**



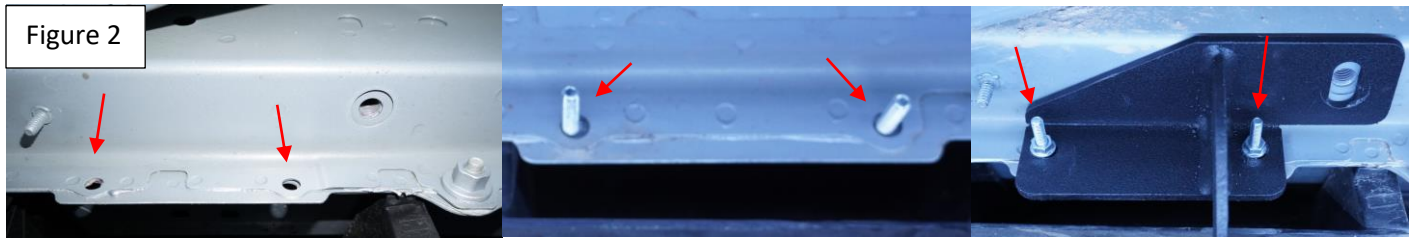
**Step 2:** Remove outer hardware holding bottom felt panels. Using a bungee cord or similar hold panel out of the way. Figure 1. Do not dispose of hardware as it will be re-used.



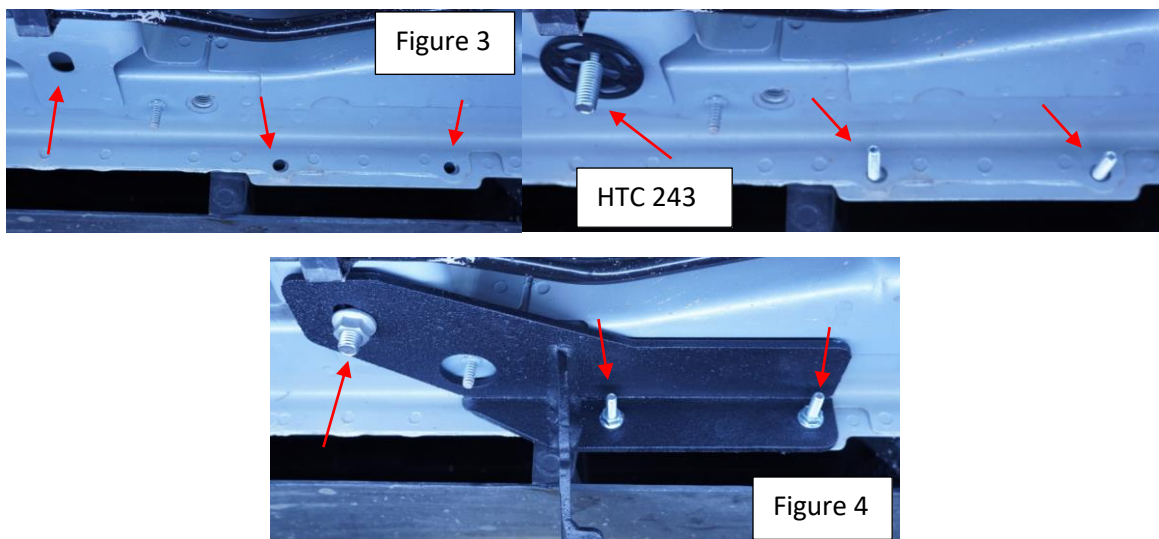


# Installation Instructions 2625 Bracket Kit

**Step 3:** Locate front bracket location. Install provided hardware #16 on Figure 2. Install front bracket #1 and tighten to torque specs. HINT: Use the factory M12 19mm bolt temporarily and remove after tightening, it will be reused to install felt cover.



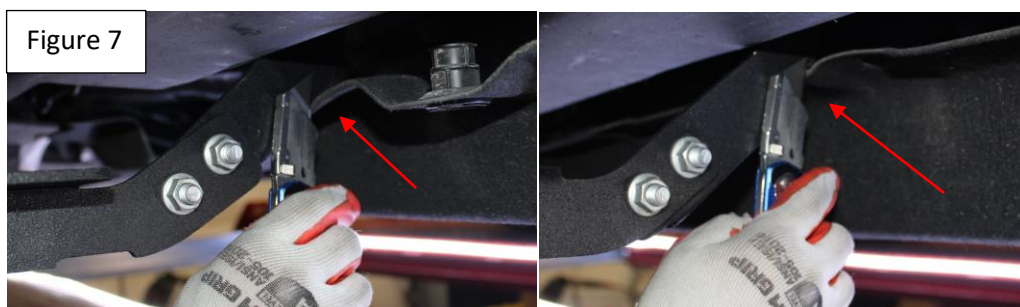
**Step 3:** Locate middle bracket location and install provided hardware #16, and HTC #14 Figure 3. Install bracket #3 and torque to specs. Figure 4.



**Step 4:** Locate rear bracket location and install provided hardware #16, Figure 5. Install bracket #5 with #15 M10 bolt and torque to specs. Figure 6.



**Step 5:** Re-install bottom felt cover, using a utility knife trim around where bracket makes contact Figure 7. A simple straight cut will do. Adjust cover accordingly.



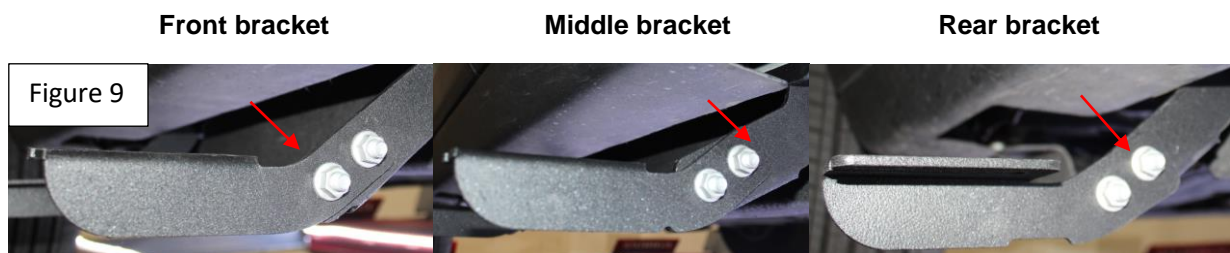
# Installation Instructions 2625 Bracket Kit

---

**Step 6:** Re-install front factory M12 19mm bolt and torque to (270 in-lbs) 22.5 ft lbs. Figure 8.



**Step 7:** Install bracket lower portion using supplied M10 hardware hand tight only. Figure 9.



**Step 8:** Install running boards on to brackets, using a level align the running boards. Hand tight only.

**Step 9:** Torque bracket lower portion to specs.

**Step 10:** Proceed to last page of this manual for running board install instructions and torque values.

For Technical support please call our team at 1-866-717-6645 and one of our experts will assist you with this installation.

**Thank you for choosing Romik.**

# Installation Instructions Running Boards

**NOTE: Use of power tools will damage the bottom of the running board and void your warranty.**

Step 1: loosen the M8 hardware on back of the running boards.

Step 2: Slide running board onto brackets

Step 3: Tighten hardware to 7 ft lbs.

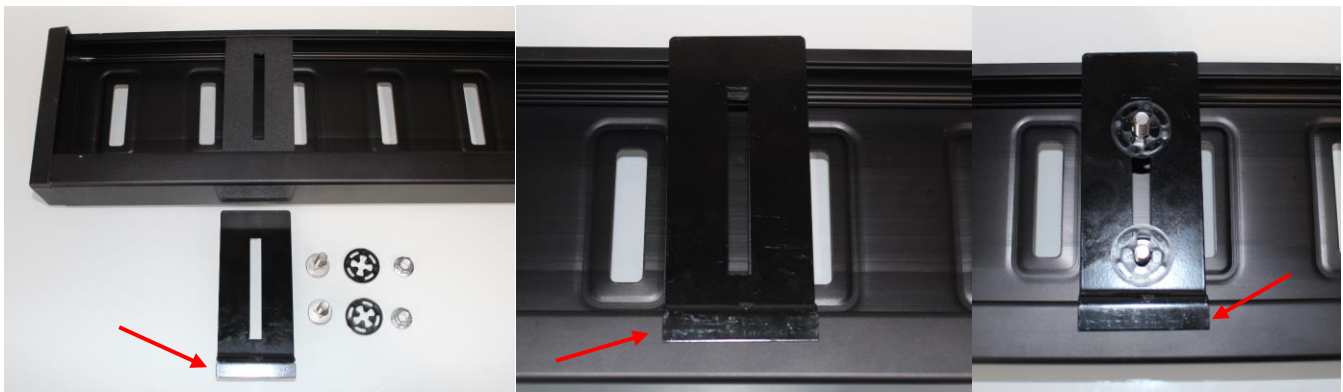


## ROF/RPD/ROB Running boards

Step 1: Place clamping plate on top of running board as shown below. Make sure clamping plate sits correctly on running board surface.

Step 2: Install carriage bolts and plastic retaining clips as shown below.

Step 3: Install and tighten hardware to 7 ft lbs.



## Product Registration and Warranty Information

- Register your Romik products at <https://romik.com/productregistration>
- Warranty information at <http://www.romik.com/warranty>



## Cleaning and maintaining your Romik Running boards

Cleaning and maintaining your running boards is important, apply a light coat of a quality carnauba wax at least 2X per year. Wash often with mild soap and make sure to remove all soap residue. Many car automatic carwashes use a strong soap, make sure to use enough water to remove all residue.

For video instructions on how to clean your Romik products please click here <https://romik.com/cleaning>