



Installation Instructions

Part No. **2819**

Product: Running Boards

Application: **LR Range Rover 2014-2022 SWB**

Level of Difficulty: 1 2 **3** 4 5

Installation Time: 90 Min.

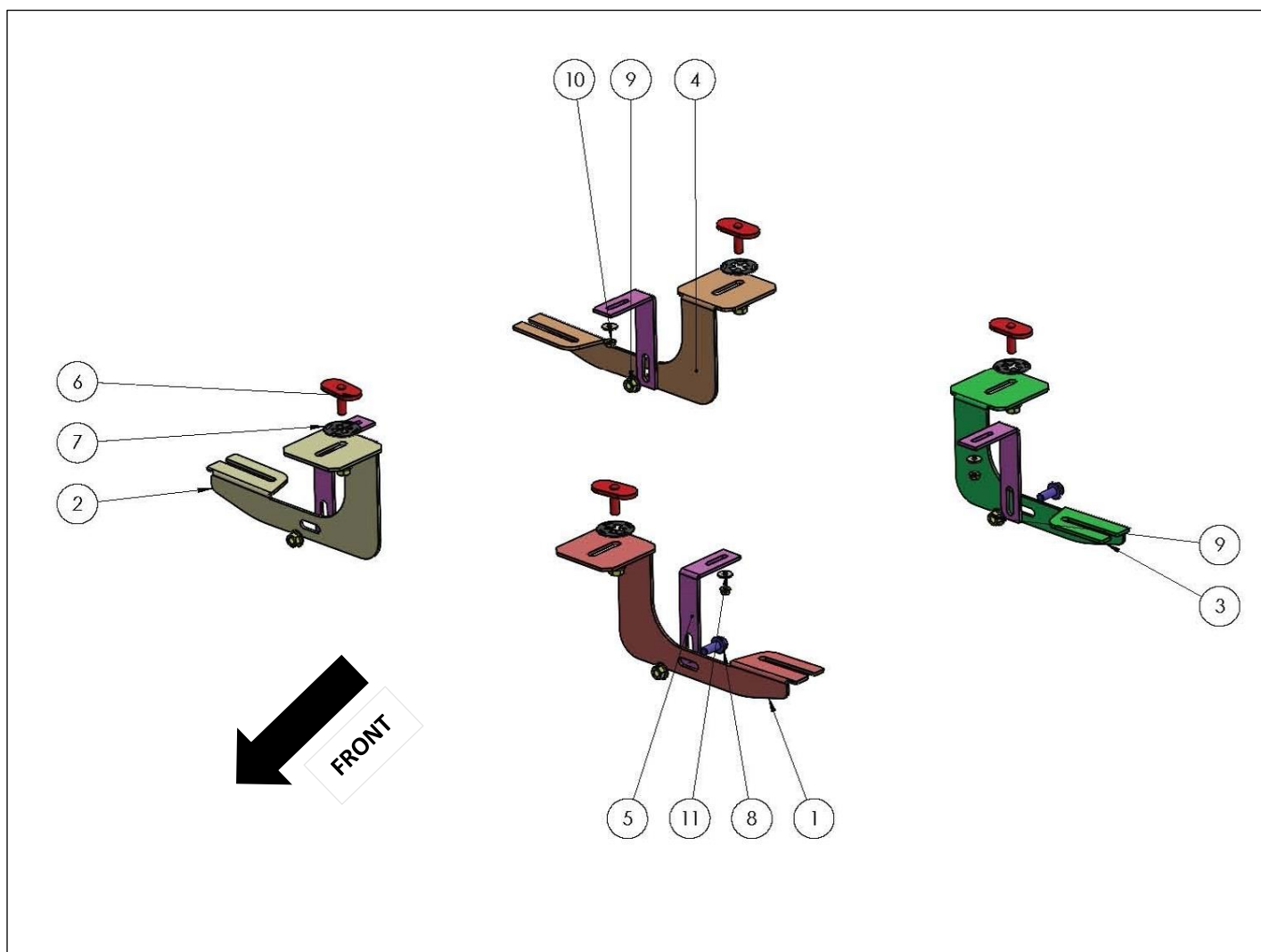
REV 3 02/01/23

Hardware	Torque Aluminum	Torque Steel to Steel
M6 Bolt	3 ft-lbs.	14 ft-lbs.
M8 Bolt	7 ft-lbs.	35 ft-lbs.
M10 Bolt	16 ft-lbs.	64 ft-lbs.
M12 Bolt	28 ft-lbs.	112 ft-lbs.

ATTENTION: Use correct torque settings to avoid damaging the running boards and or mounting brackets. Failure to do so will void your warranty. If you have any questions, please contact our technical team at 1-866-717-6645

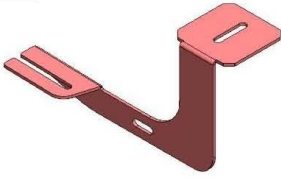
Attention: Please make sure that you have the latest instructions
from *Romik.com*

QR Scan



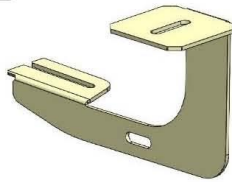
2819

1



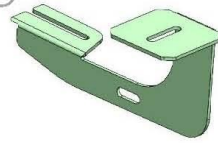
DRIVER SIDE
2819.ABNS.FO
FRONT BRACKET
1 X QTY

2



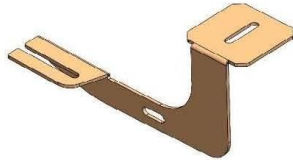
PASSENGER SIDE
2819.ABNS.FO
FRONT BRACKET
1 X QTY

3



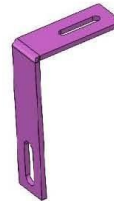
DRIVER SIDE
2819.ABNS.BO
REAR BRACKET
1 X QTY

4



PASSENGER SIDE
2819.ABNS.BO
REAR BRACKET
1 X QTY

5



2819.ABNS.F1 BRACKET
4 X QTY

HARDWARE

6



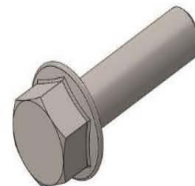
HTC 240 - M10x30
4 X QTY

7



HTC 269- CLIPS -(M10)
4x QTY

8



M10 x 25
FLANGE BOLT
4x QTY

9



M10 FLANGE NUT
8x

10



M6 FLANGE NUT
4x

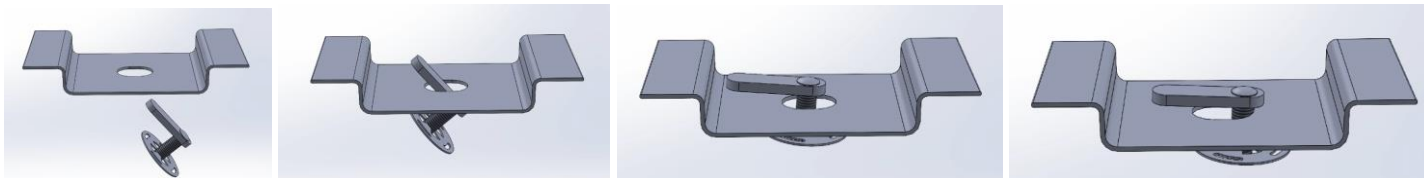
11



M6 WASHER
4x QTY

Installation Instructions 2625 Bracket Kit

Important Install Tip: When installing Romik HTC inserts follow the sequence below. Make sure the HTC is seated correctly and do not use power tools as this will only spin the insert and possibly damage it. Test by tugging on it before installing bracket. Blue loctite is highly recommended on all metal parts.



Note: This vehicle requires trimming on undercarriage plastic panels. **Professional installation recommended.**

Step 1: Remove plastic panels from vehicle, do not discard as they will be re-used.

Step 2: Locate front mounting locations and hardware as per 1st page of this installation manual.

Step 3: Install provided HTC 240 as show on figure 1. Note use 3rd hole. Install front bracket as shown Figure 2. Do not tighten **NOTE: Front brackets may look like the rears but are higher in height.**



Step 4: Install extra support bracket as shown Figure 3. Using a utility knife cut along the area that makes contact with the support. Attach extra support to main bracket using supplied M10 hardware. Figure 4. Do not tighten



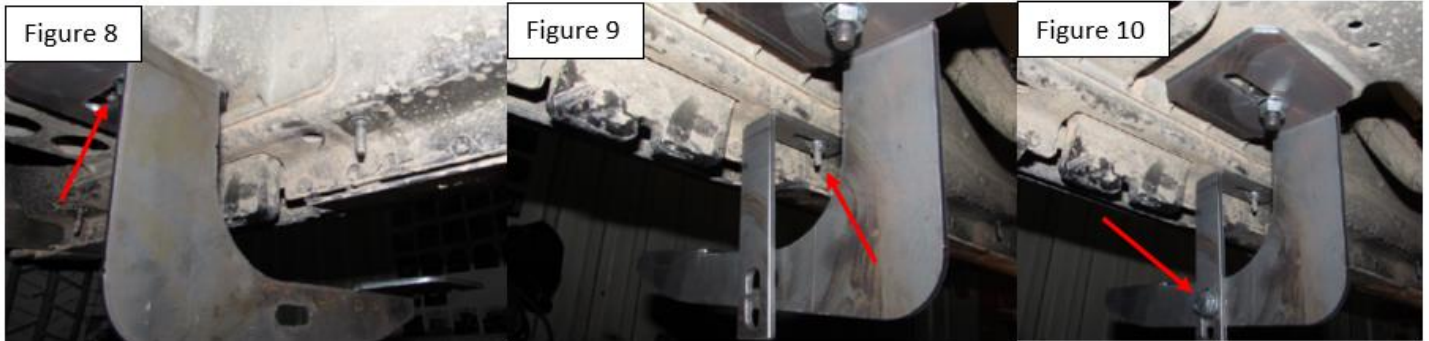
Step 5: Locate rear bracket mounting area Figure 7. Install supplied HTC 240 as shown.



Installation Instructions 2625 Bracket Kit

Step 6: Install rear main bracket as shown Figure 8 Do not tighten.

Step 7: Install extra support as shown Figure 9 and attach to main bracket using supplied M10 hardware Figure 10. Do not tighten



Step 8: Using a utility knife remove small 1x2 inch section as shown Figure 11 Install panels back on after completing step 8 on both sides.



Step 9: Proceed to last page of this manual for running board install instructions and torque values

Step 10: Repeat opposite side

For Technical support please call our team at 1-866-717-6645 and one of our experts will assist you with this installation.

Thank you for choosing Romik.

Installation Instructions Running Boards

NOTE: Use of power tools will damage the bottom of the running board and void your warranty.

Step 1: loosen the M8 hardware on back of the running boards.

Step 2: Slide running board onto brackets

Step 3: Tighten hardware to 7 ft lbs.

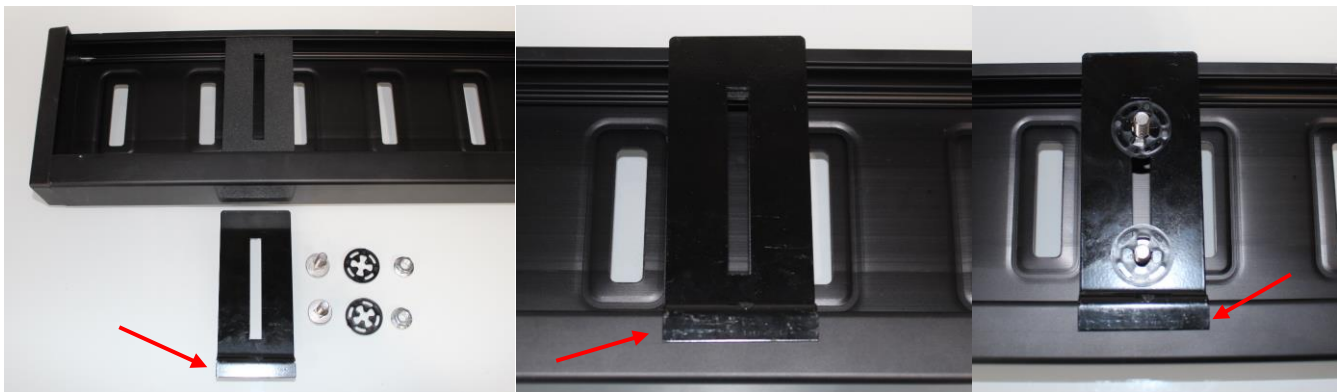


ROF/RPD/ROB Running boards

Step 1: Place clamping plate on top of running board as shown below. Make sure clamping plate sits correctly on running board surface.

Step 2: Install carriage bolts and plastic retaining clips as shown below.

Step 3: Install and tighten hardware to 7 ft lbs.



Product Registration and Warranty Information

- Register your Romik products at <https://romik.com/productregistration>
- Warranty information at <http://www.romik.com/warranty>

Cleaning and maintaining your Romik Running boards

Cleaning and maintaining your running boards is important, apply a light coat of a quality carnauba wax at least 2X per year. Wash often with mild soap and make sure to remove all soap residue. Many car automatic carwashes use a strong soap, make sure to use enough water to remove all residue.

For video instructions on how to clean your Romik products please click here <https://romik.com/cleaning>