



## Installation Instructions

Part No. **2333 / 5419**

Product: Running Boards

Application: **Hyundai Santa Fe 2021 - Present**

**Kia Sorento 2021 - Present**

Level of Difficulty: 1 **2** 3 4 5

Installation Time: 90 Min

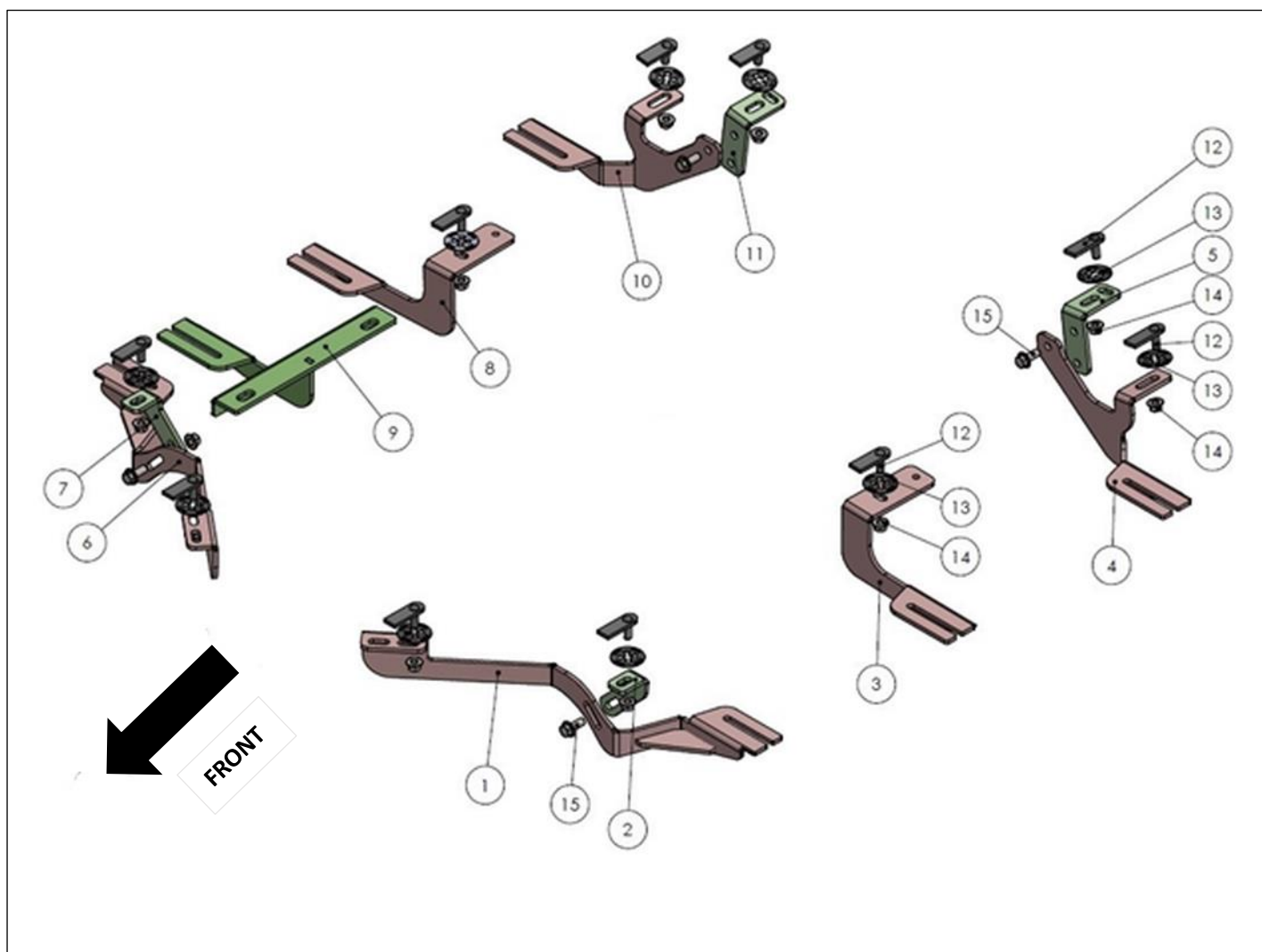
REV 2 02/01/23

Hardware	Torque Aluminum	Torque Steel to Steel
M6 Bolt	3 ft-lbs.	14 ft-lbs.
M8 Bolt	7 ft-lbs.	35 ft-lbs.
M10 Bolt	16 ft-lbs.	64 ft-lbs.
M12 Bolt	28 ft-lbs.	112 ft-lbs.

**ATTENTION:** Use correct torque settings to avoid damaging the running boards and or mounting brackets. Failure to do so will void your warranty. If you have any questions, please contact our technical team at 1-866-717-6645

Attention: Please make sure that you have the latest instructions from **Romik.com**

QR Scan



1



DRIVER SIDE  
FRONT BRACKET-1  
1 x QTY

2



DRIVER SIDE  
FRONT BRACKET-2  
1 x QTY

3



DRIVER SIDE  
CENTER BRACKET-1  
1 x QTY

4



DRIVER SIDE  
REAR BRACKET-1  
1 x QTY

5



DRIVER SIDE  
REAR BRACKET-2  
1 x QTY

6



PASSENGER SIDE  
FRONT BRACKET-1  
1 x QTY

7



PASSENGER SIDE  
FRONT BRACKET-2  
1 x QTY

8



PASSENGER SIDE  
CENTER BRACKET-1  
1 x QTY

9



PASSENGER SIDE  
CENTER BRACKET-2 (HYBRID)  
1 x QTY

10



PASSENGER SIDE  
REAR BRACKET-1  
1 x QTY

11



PASSENGER SIDE  
REAR BRACKET-2  
1 x QTY

## HARDWARE

12



HTC 230 - M10x25  
(5x20x60)  
10x

13



HTC269  
CLIPS M10  
10x

14



M10  
FLANGE NUT  
14x

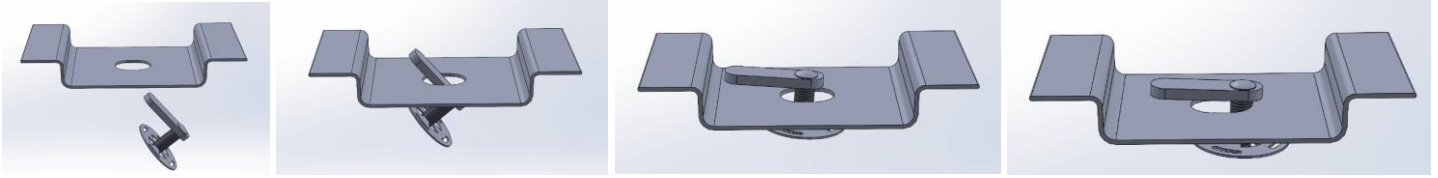
15



M10x25  
FLANGE BOLT  
4x

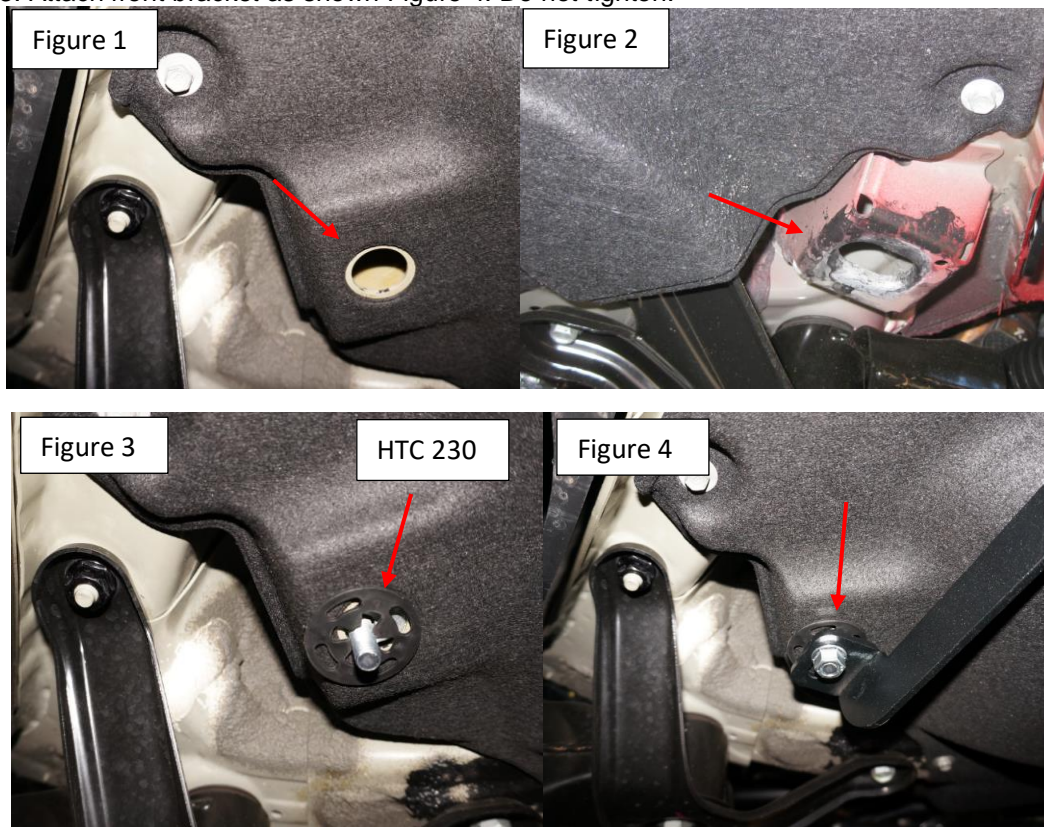
# Installation Instructions 2333 / 5419 Bracket Kit

**Important Install Tip:** When installing Romik HTC inserts follow the sequence below. Make sure the HTC is seated correctly and do not use power tools as this will only spin the insert and possibly damage it. Test by tugging on it before installing bracket. Blue loctite is highly recommended on all metal parts.

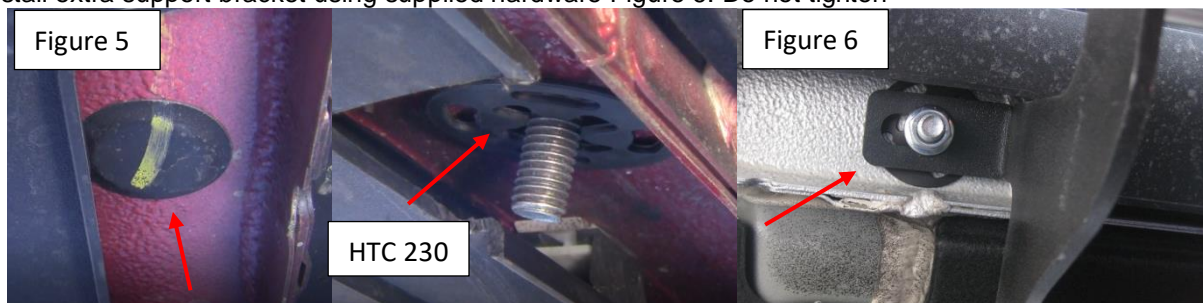


**Step 1:** Locate front mounting locations and hardware as per 1<sup>st</sup> page of this installation manual.

**Step 2:** NOTE: Figure 1 is Hybrid model; Figure 2 is regular model. Install provided HTC 230 as shown. Figure 3. Attach front bracket as shown Figure 4. Do not tighten.



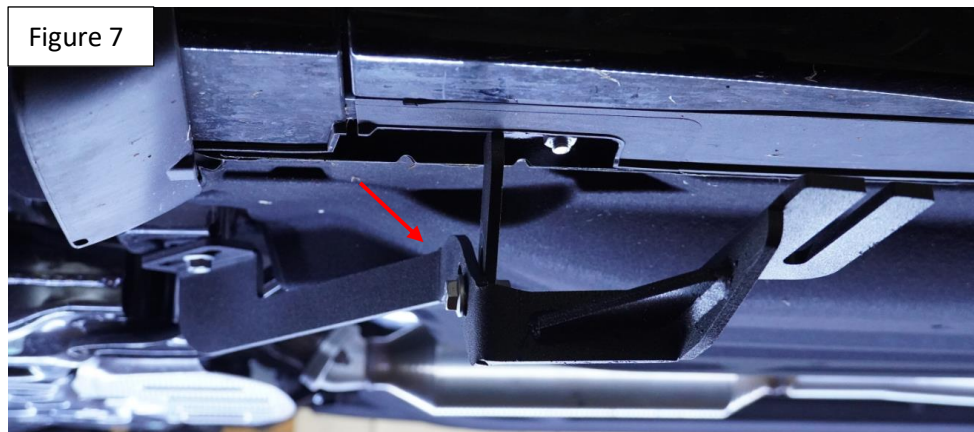
**Step 3:** Locate and remove factory outer rubber plug as shown on Figure 5. Install provided HTC 230. Install extra support bracket using supplied hardware Figure 6. Do not tighten.



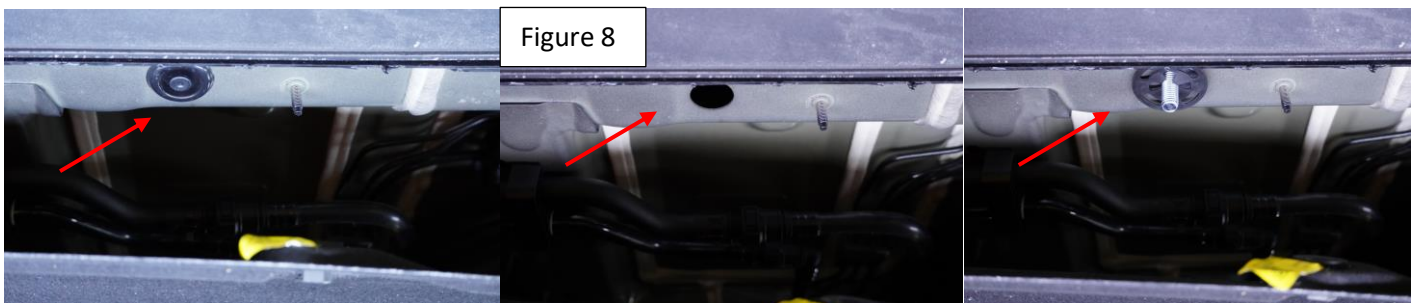


# Installation Instructions 2333 / 5419 Bracket Kit

**Step 4:** Attach the extra support to the main bracket Figure 7. Do not fully tighten



**Step 5:** Drop the felt panel by removing only the outer hardware do not discard. Note for installation purposes we removed the panel but it is not necessary. Remove factory plug and install provided HTC 230 Figure 8. Install middle bracket and torque to specs. Using a utility knife trim felt panel in order to re-install.

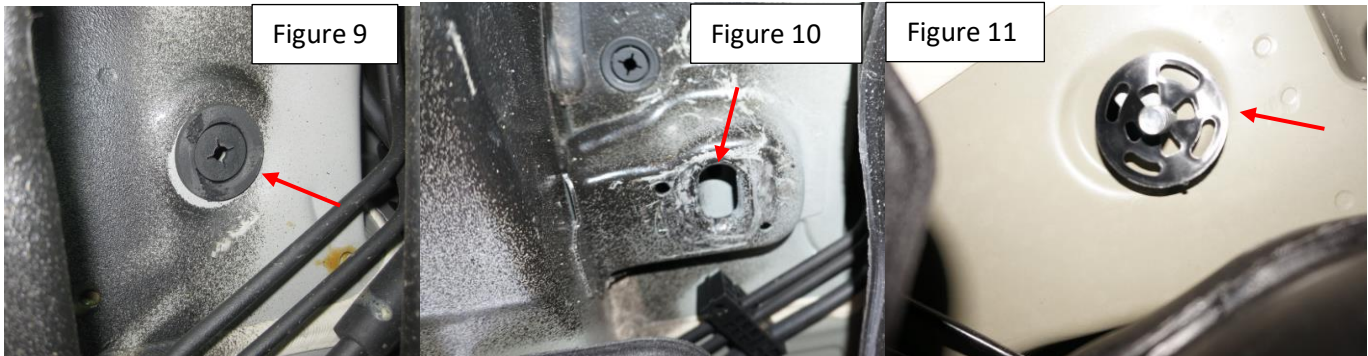


**ATTENTION:** Hybrid models require included middle bracket. Follow same procedures, remove factory bolts and install provided bracket #9

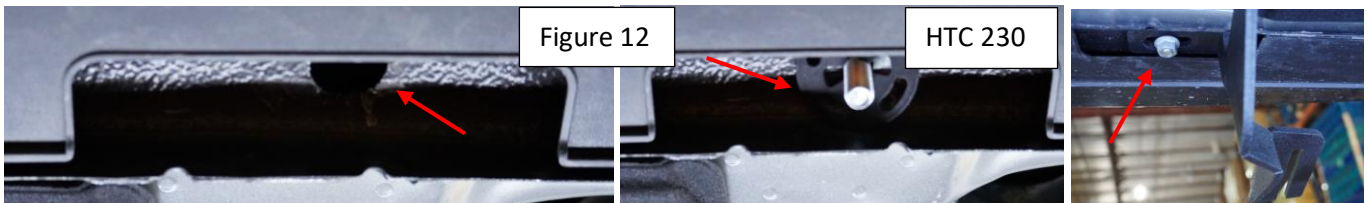


# Installation Instructions 2333 / 5419 Bracket Kit

**Step 6:** NOTE: Figure 9 Is Hybrid model Figure 10 is regular model. Locate provided HTC 230 on rear bracket mounting area Figure 11



**Step 5:** Locate outer mounting point and remove rubber plug. install provided HTC 230 Figure 12. Install rear bracket portion as shown



**Step 6:** Install remaining rear bracket as shown Figure 13 (Panels removed for photo)



**Step 7:** Proceed to last page of this manual for running board install instructions and torque values.

For Technical support please call our team at 1-866-717-6645 and one of our experts will assist you with this installation

***Thank you for choosing Romik.***

# Installation Instructions Running Boards

**NOTE: Use of power tools will damage the bottom of the running board and void your warranty.**

**Step 1: loosen the M8 hardware on back of the running boards.**

**Step 2: Slide running board onto brackets**

**Step 3: Tighten hardware to 7 ft lbs.**

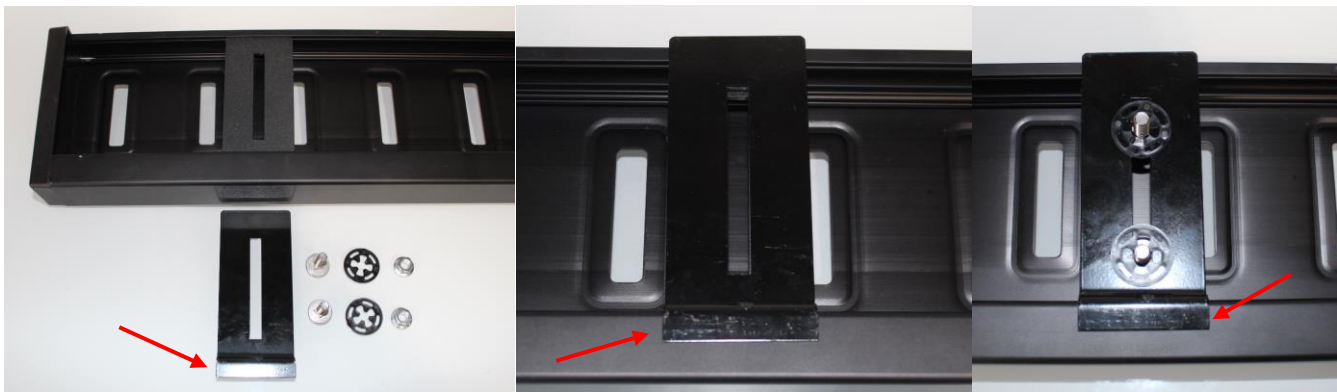


## ROF/RPD/ROB Running boards

**Step 1: Place clamping plate on top of running board as shown below. Make sure clamping plate sits correctly on running board surface.**

**Step 2: Install carriage bolts and plastic retaining clips as shown below.**

**Step 3: Install and tighten hardware to 7 ft lbs.**



## Product Registration and Warranty Information

- Register your Romik products at <https://romik.com/productregistration>
- Warranty information at <http://www.romik.com/warranty>

## Cleaning and maintaining your Romik Running boards

Cleaning and maintaining your running boards is important, apply a light coat of a quality carnauba wax at least 2X per year. Wash often with mild soap and make sure to remove all soap residue. Many car automatic carwashes use a strong soap, make sure to use enough water to remove all residue.

For video instructions on how to clean your Romik products please click here <https://romik.com/cleaning>