

ROMIK

Installation Instructions

Part No. **2322**

Product: Running Boards

Application: **Hyundai Tucson 2010 - 2015**

Kia Sportage 2011 - 2016

Level of Difficulty: 1 **2** 3 4 5

Installation Time: 60 Min.

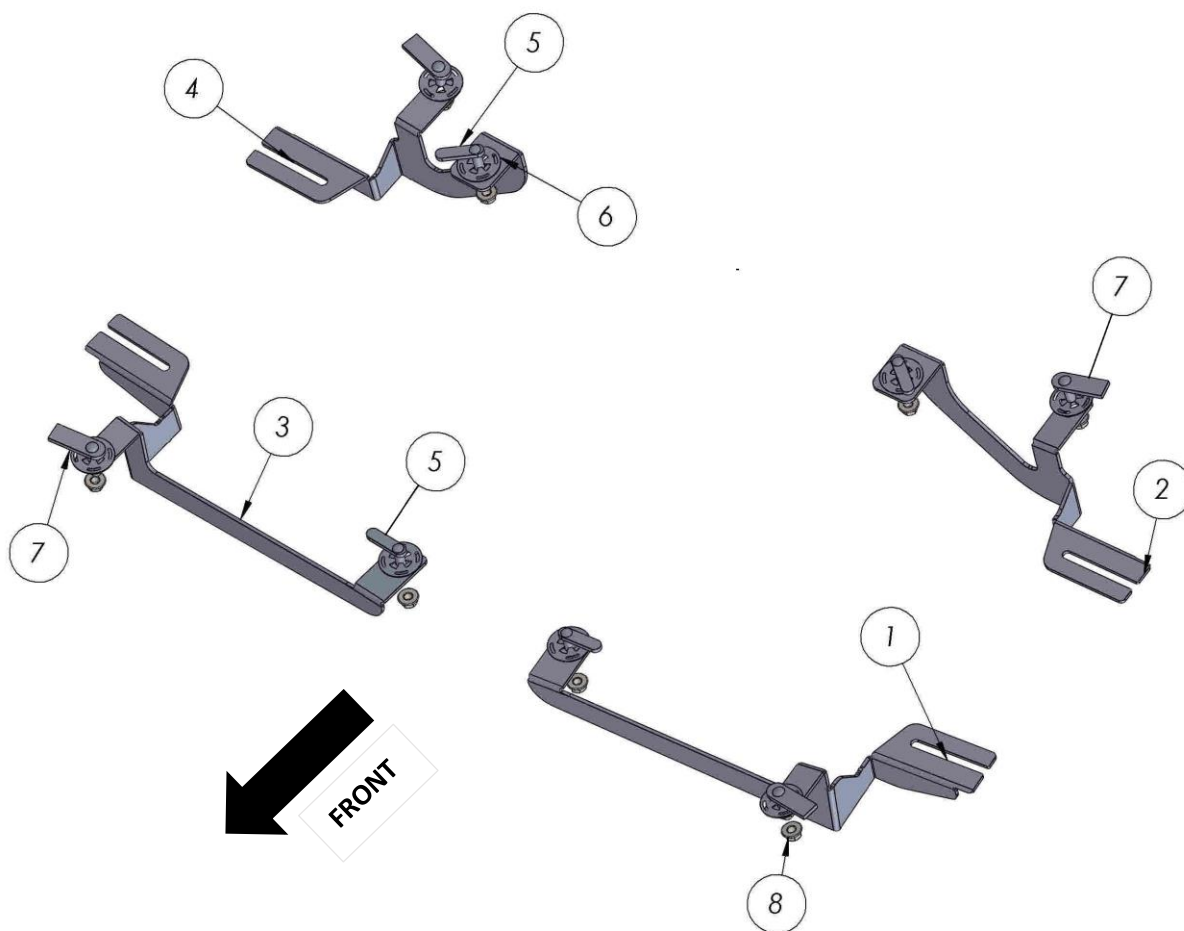
REV 2 02/01/23

| Hardware | Torque Aluminum | Torque Steel to Steel |
|----------|-----------------|-----------------------|
| M6 Bolt | 3 ft-lbs. | 14 ft-lbs. |
| M8 Bolt | 7 ft-lbs. | 35 ft-lbs. |
| M10 Bolt | 16 ft-lbs. | 64 ft-lbs. |
| M12 Bolt | 28 ft-lbs. | 112 ft-lbs. |

ATTENTION: Use correct torque settings to avoid damaging the running boards and or mounting brackets. Failure to do so will void your warranty. If you have any questions, please contact our technical team at 1-866-717-6645

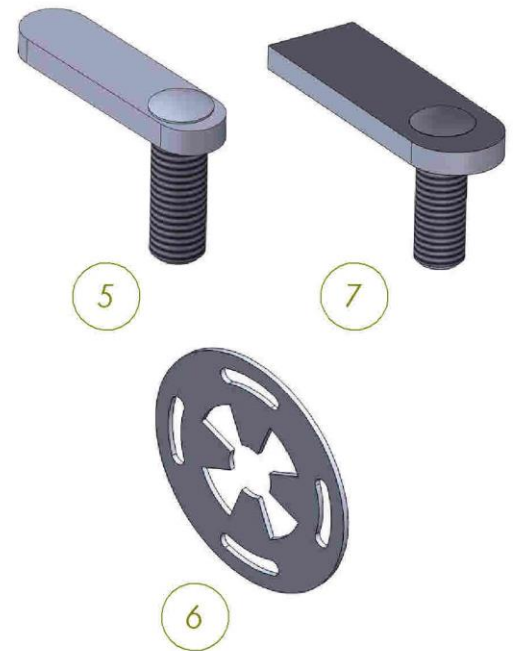
Attention: Please make sure that you have the latest instructions from *Romik.com*

QR Scan



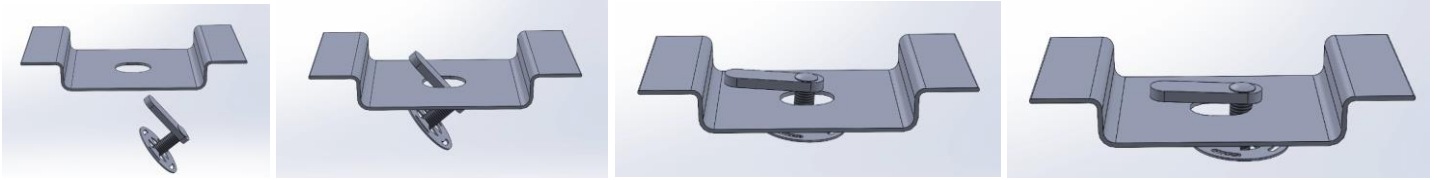
2322 Hardware List

| ITEM/NO | PART NAME | QTY |
|---------|-----------------------------|-----|
| 1 | 2322100850F0 DRIVER | 1 |
| 2 | 2322100850B0 DRIVER | 1 |
| 3 | 2322100850F0 PASSENGER | 1 |
| 4 | 2322100850B0 PASSENGER | 1 |
| 5 | HTC 243 - M10x25(5x13x50) | 4 |
| 6 | HTC 269 CLIPS / KLIPS (M10) | 8 |
| 7 | HTC 230 - M10x25(5x20x60) | 4 |
| 8 | DIN 6923 FLANGE NUT M10 | 8 |

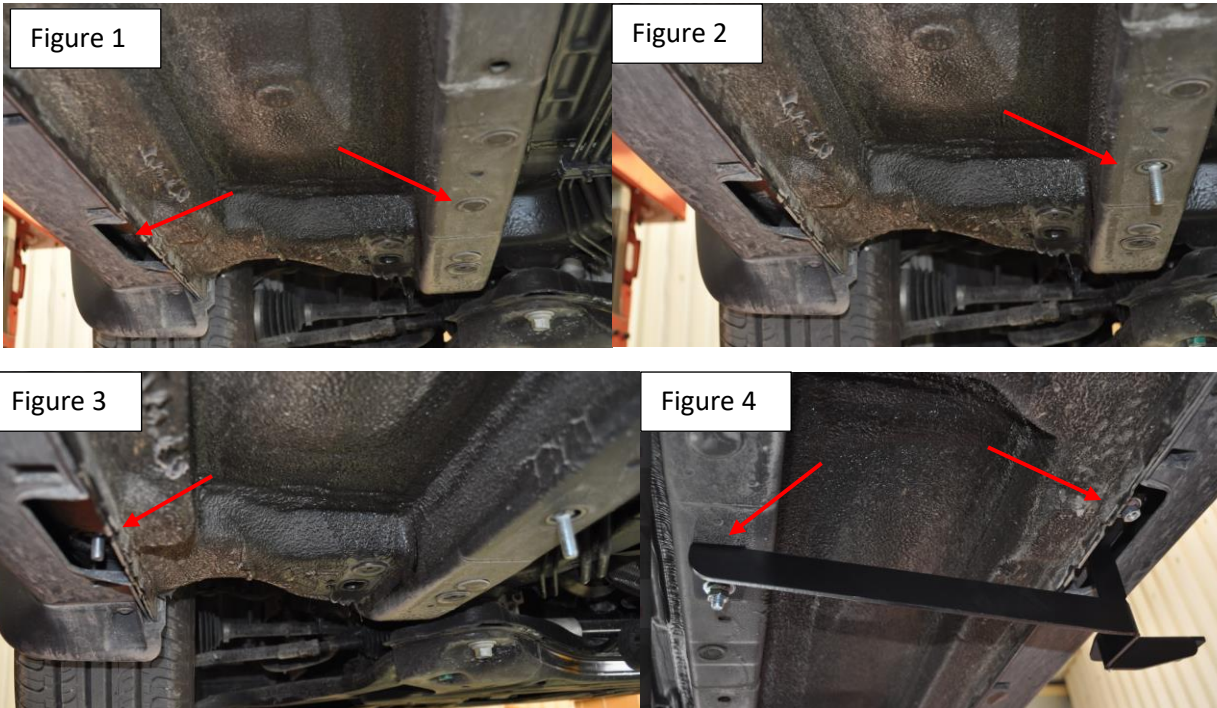


Installation Instructions 2322 Bracket Kit

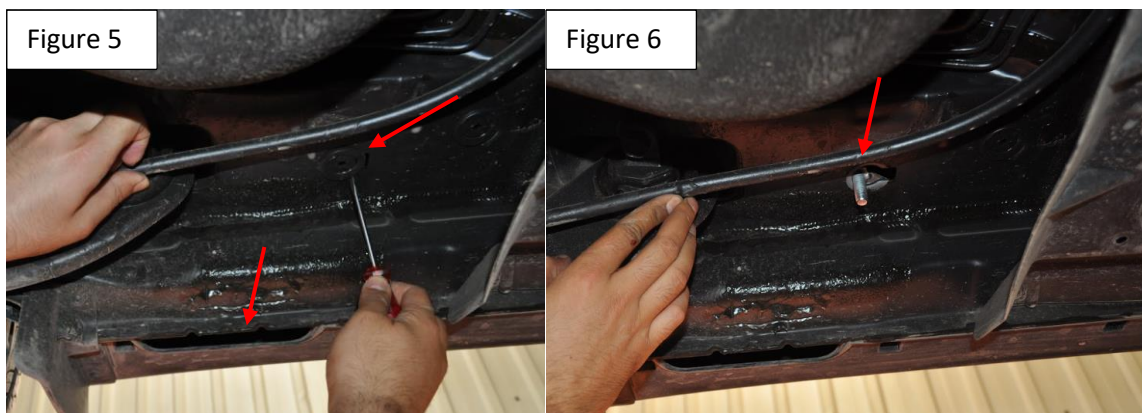
Important Install Tip: When installing Romik HTC inserts follow the sequence below. Make sure the HTC is seated correctly and do not use power tools as this will only spin the insert and possibly damage it. Test by tugging on it before installing bracket. Blue loctite is highly recommended on all metal parts.



Step 1: Locate front bracket mounting position and remove rubber plugs Figure 1. Install HTC 230 as shown Figure 2. Install HTC 243 as shown Figure 3. Finally install front bracket as shown Figure 4. Do not tighten.

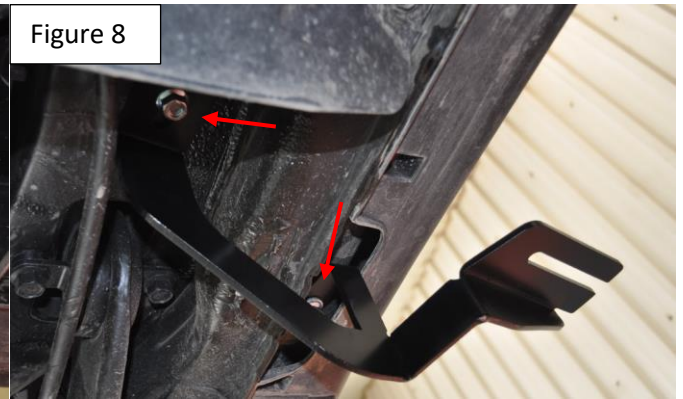


Step 2: Locate rear bracket mounting points remove rubber plugs Figure 5. Install HTC 230 as shown Figure 6.



Installation Instructions 2322 Bracket Kit

Continued: Install HTC 243 as shown Figure 7. Finally install rear bracket as shown Figure 8. Do not tighten.



Step 3: Repeat on opposite side.

Step 4: Proceed to last page of this manual for running board install instructions and torque values

For Technical support please call our team at 1-866-717-6645 and one of our experts will assist you with this installation.

Thank you for choosing Romik.

Installation Instructions Running Boards

NOTE: Use of power tools will damage the bottom of the running board and void your warranty.

Step 1: loosen the M8 hardware on back of the running boards.

Step 2: Slide running board onto brackets

Step 3: Tighten hardware to 7 ft lbs.

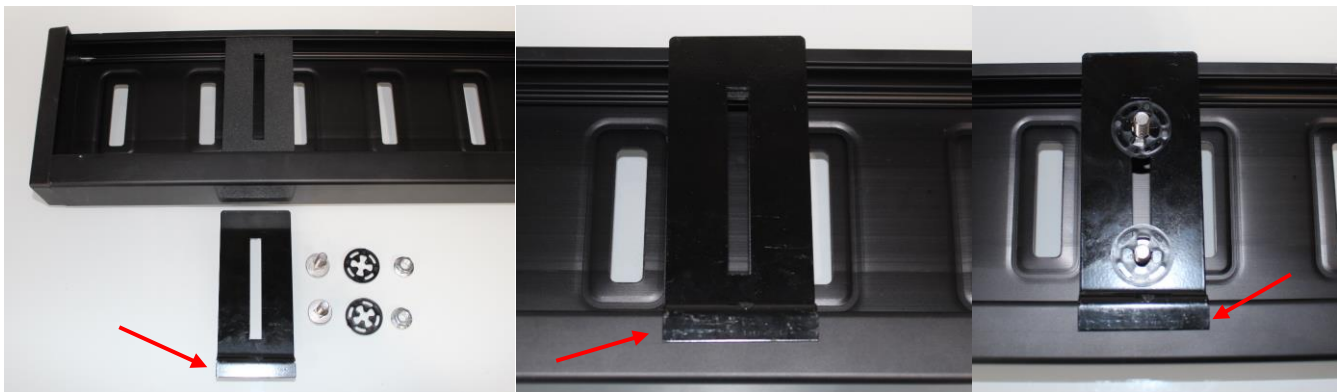


ROF/RPD/ROB Running boards

Step 1: Place clamping plate on top of running board as shown below. Make sure clamping plate sits correctly on running board surface.

Step 2: Install carriage bolts and plastic retaining clips as shown below.

Step 3: Install and tighten hardware to 7 ft lbs.



Product Registration and Warranty Information

- Register your Romik products at <https://romik.com/productregistration>
- Warranty information at <http://www.romik.com/warranty>

Cleaning and maintaining your Romik Running boards

Cleaning and maintaining your running boards is important, apply a light coat of a quality carnauba wax at least 2X per year. Wash often with mild soap and make sure to remove all soap residue. Many car automatic carwashes use a strong soap, make sure to use enough water to remove all residue.

For video instructions on how to clean your Romik products please click here <https://romik.com/cleaning>