



Installation Instructions

Part No. **3619**

Product: Running Boards

Application: **Subaru Solterra 2023 – Present**

Lexus RZ 2023 – Present

Toyota BZ4X 2023 - Present

Level of Difficulty: **1 2 3 4 5**

Installation Time: 60 Min.

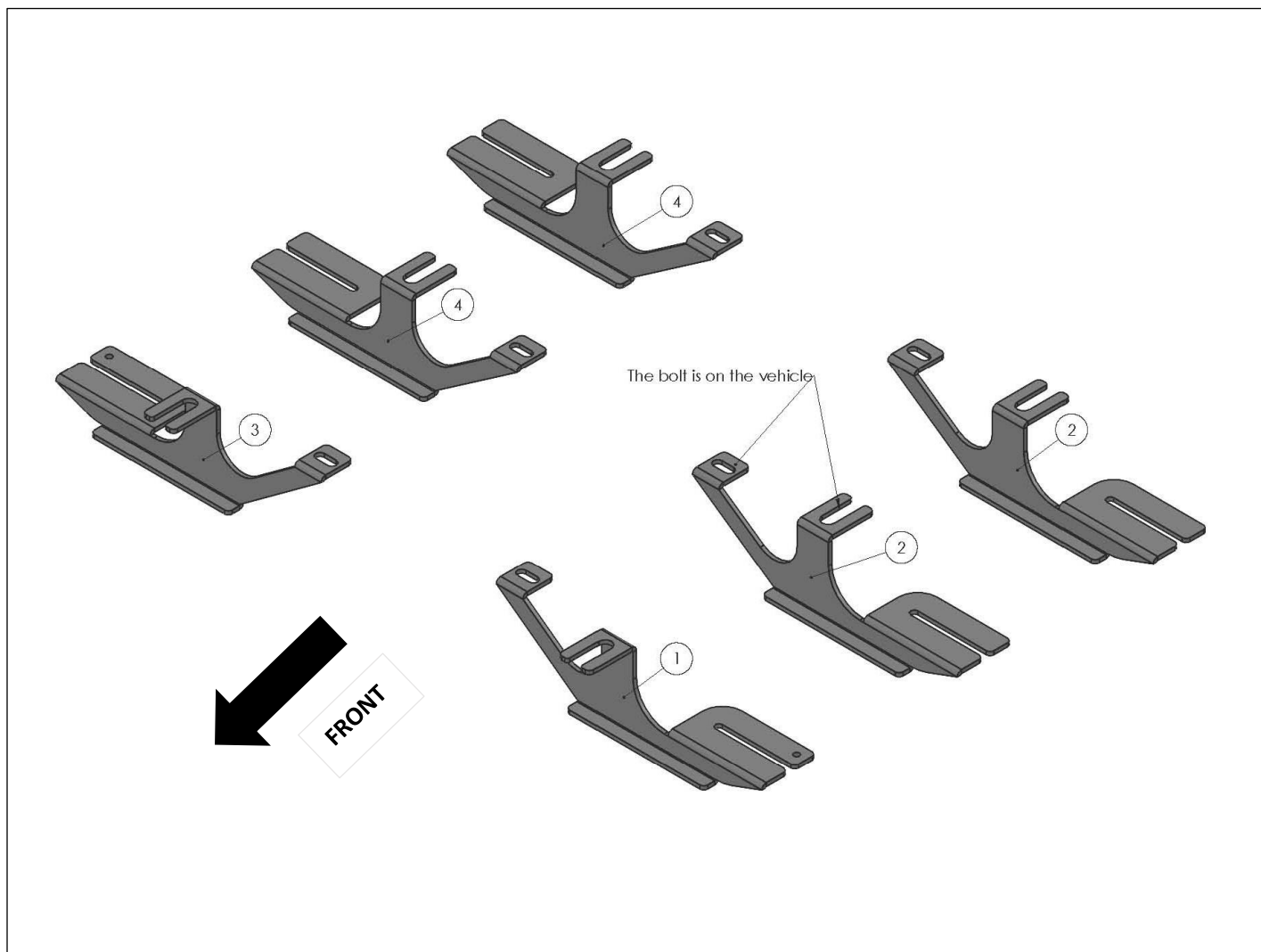
REV 1 11/01/23

Hardware	Torque Aluminum	Torque Steel to Steel
M6 Bolt	3 ft-lbs.	14 ft-lbs.
M8 Bolt	7 ft-lbs.	35 ft-lbs.
M10 Bolt	16 ft-lbs.	64 ft-lbs.
M12 Bolt	28 ft-lbs.	112 ft-lbs.

ATTENTION: Use correct torque settings to avoid damaging the running boards and or mounting brackets. Failure to do so will void your warranty. If you have any questions, please contact our technical team at 1-866-717-6645

Attention: Please make sure that you have the latest instructions from **Romik.com**

QR Scan



3619

1



**DRIVER SIDE
FRONT BRACKET
1 x QTY**

2



**DRIVER SIDE
CENTER-BACK BRACKET
1 x QTY**

3



**PASSENGER SIDE
FRONT BRACKET
1 x QTY**

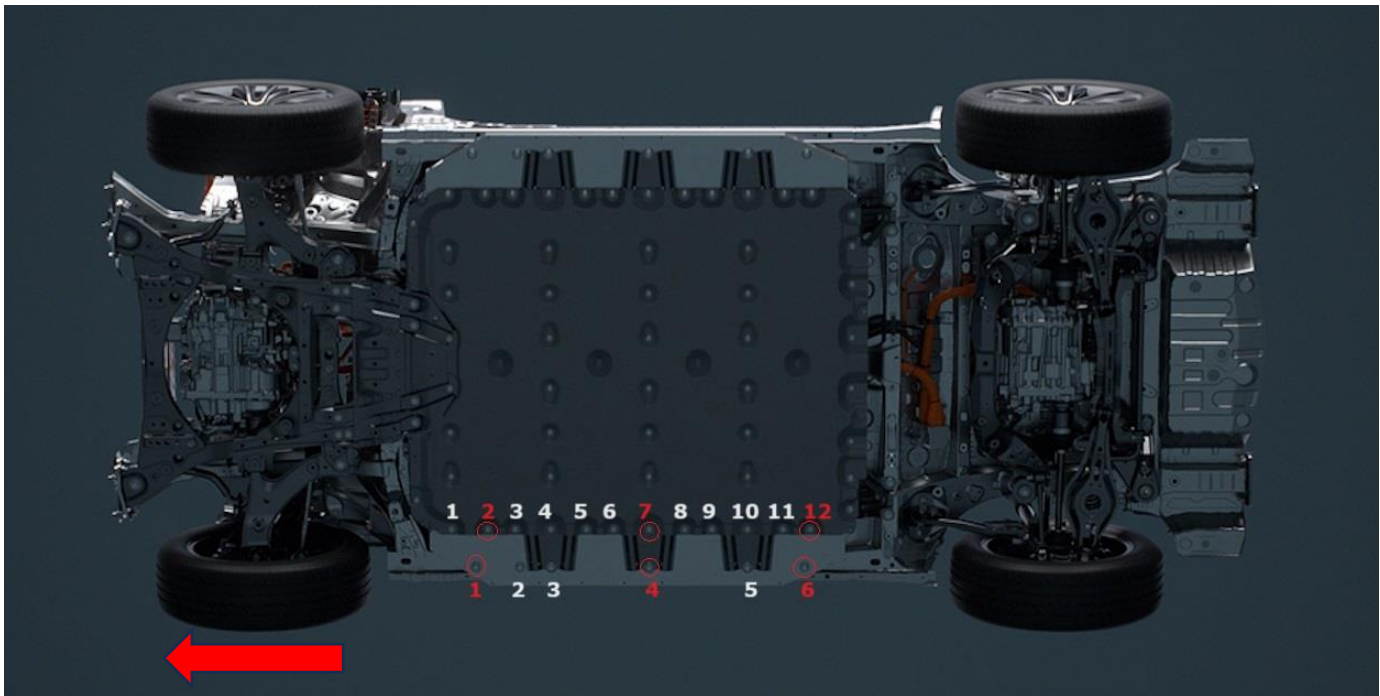
4



**PASSENGER SIDE
CENTER-BACK BRACKET
1 x QTY**

Installation Instructions 3619 Bracket Kit

NOTE: Factory hardware used for this installation. Do not remove outer bolts simply loosen them to slide the brackets in place. Do one bracket at a time.

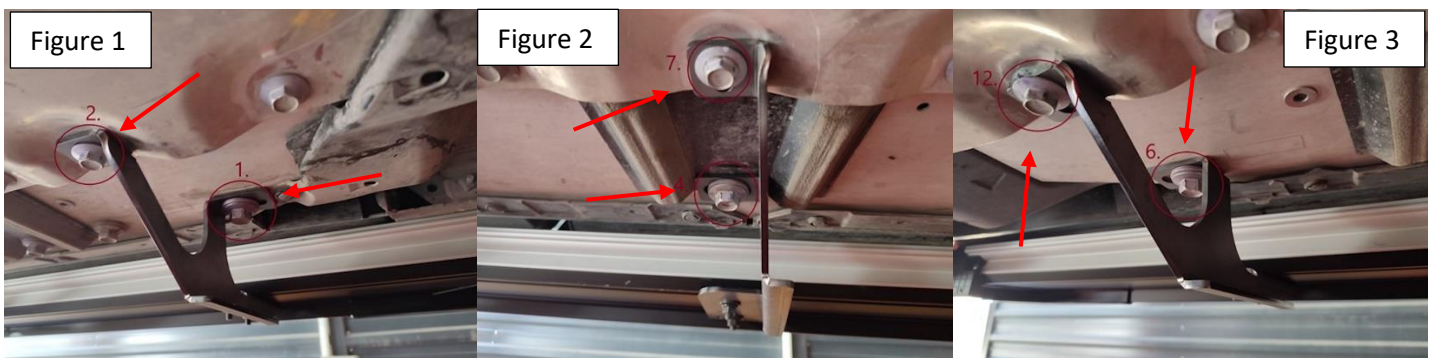


Step 1: Using the diagram above locate the mounting points. **Proceed to install ONE bracket at a time.**

Step 2: Loosen outer bolt #1 and remove inner bolt #2 Figure 1. Install bracket #1, snug hardware but do not fully tighten.

Step 3: Repeat procedure using outer bolt #4 and inner bolt #7 Figure 2. Install bracket #2, snug hardware but do not fully tighten.

Step 3: Repeat procedure using outer bolt #6 and inner bolt #12 Figure 3. Install bracket #2, snug hardware but do not fully tighten.



Step 4: Repeat on passenger side and proceed to last page of this manual for running board install instructions and torque values. Once running boards are installed & aligned tighten brackets 1-3-2 sequence.

For Technical support please call our team at 1-866-717-6645 and one of our experts will assist you with this installation.

Thank you for choosing Romik.

Installation Instructions Running Boards

NOTE: Use of power tools will damage the bottom of the running board and void your warranty.

Step 1: loosen the M8 hardware on back of the running boards.

Step 2: Slide running board onto brackets

Step 3: Tighten hardware to 7 ft lbs.

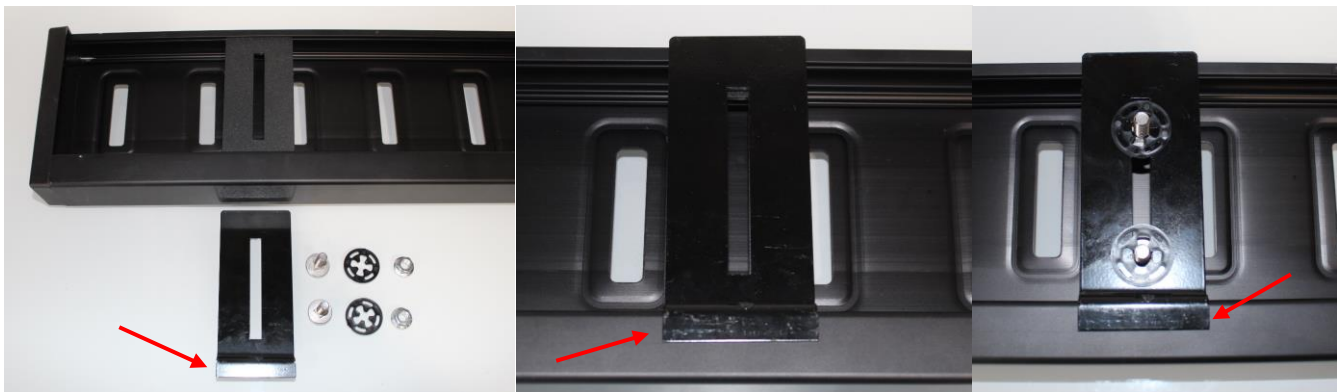


ROF/RPD/ROB Running boards

Step 1: Place clamping plate on top of running board as shown below. Make sure clamping plate sits correctly on running board surface.

Step 2: Install carriage bolts and plastic retaining clips as shown below.

Step 3: Install and tighten hardware to 7 ft lbs.



Product Registration and Warranty Information

- Register your Romik products at <https://romik.com/productregistration>
- Warranty information at <http://www.romik.com/warranty>

Cleaning and maintaining your Romik Running boards

Cleaning and maintaining your running boards is important, apply a light coat of a quality carnauba wax at least 2X per year. Wash often with mild soap and make sure to remove all soap residue. Many car automatic carwashes use a strong soap, make sure to use enough water to remove all residue.

For video instructions on how to clean your Romik products please click here <https://romik.com/cleaning>