



Installation Instructions

Part No. **2824**

Product: Running Boards

Application: **Range Rover 2023 - Present**

Range Rover Sport 2023 - Present

Level of Difficulty: 1 2 3 4 **5**

Installation Time: 240 Min.

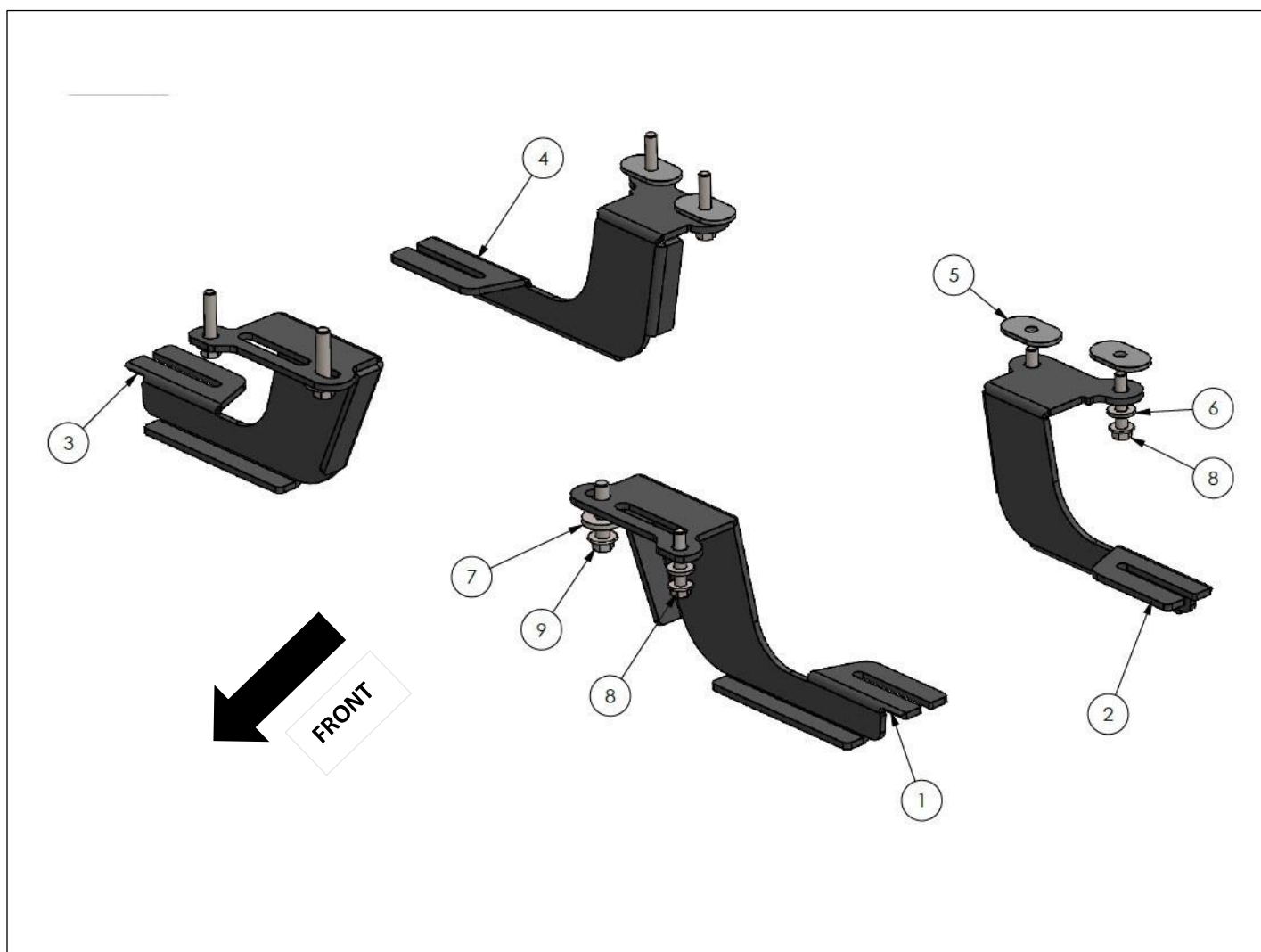
REV 1 02/25/24

Hardware	Torque Aluminum	Torque Steel to Steel
M6 Bolt	3 ft-lbs.	14 ft-lbs.
M8 Bolt	7 ft-lbs.	35 ft-lbs.
M10 Bolt	16 ft-lbs.	64 ft-lbs.
M12 Bolt	28 ft-lbs.	112 ft-lbs.

ATTENTION: Use correct torque settings to avoid damaging the running boards and or mounting brackets. Failure to do so will void your warranty. If you have any questions, please contact our technical team at 1-866-717-6645

Attention: Please make sure that you have the latest instructions from *Romik.com*

QR Scan



2824 - HARDWARE

1



DRIVER SIDE
FRONT BRACKET
1 x QTY

2



DRIVER SIDE
REAR BRACKET
1 x QTY

3



PASSENGER SIDE
FRONT BRACKET
1 x QTY

4



PASSENGER SIDE
REAR BRACKET
1 x QTY

HARDWARE

5



HTC 283 - (4x60x35)
4x

6



M10
WASHER
6x

7



M12
WASHER
2x

8



M10x50
FLANGE BOLT
6x

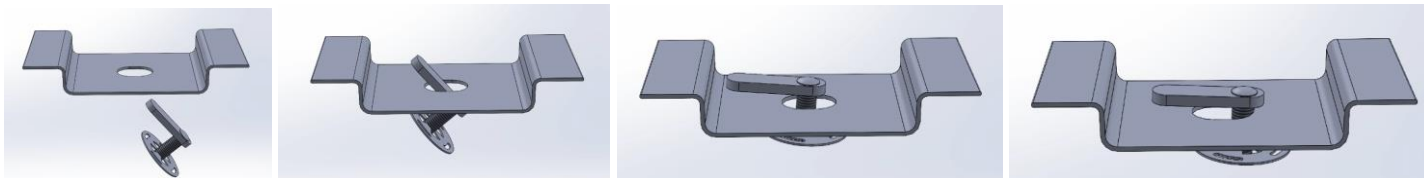
9



M12x50
FLANGE BOLT
2x

Installation Instructions 2824 Bracket Kit

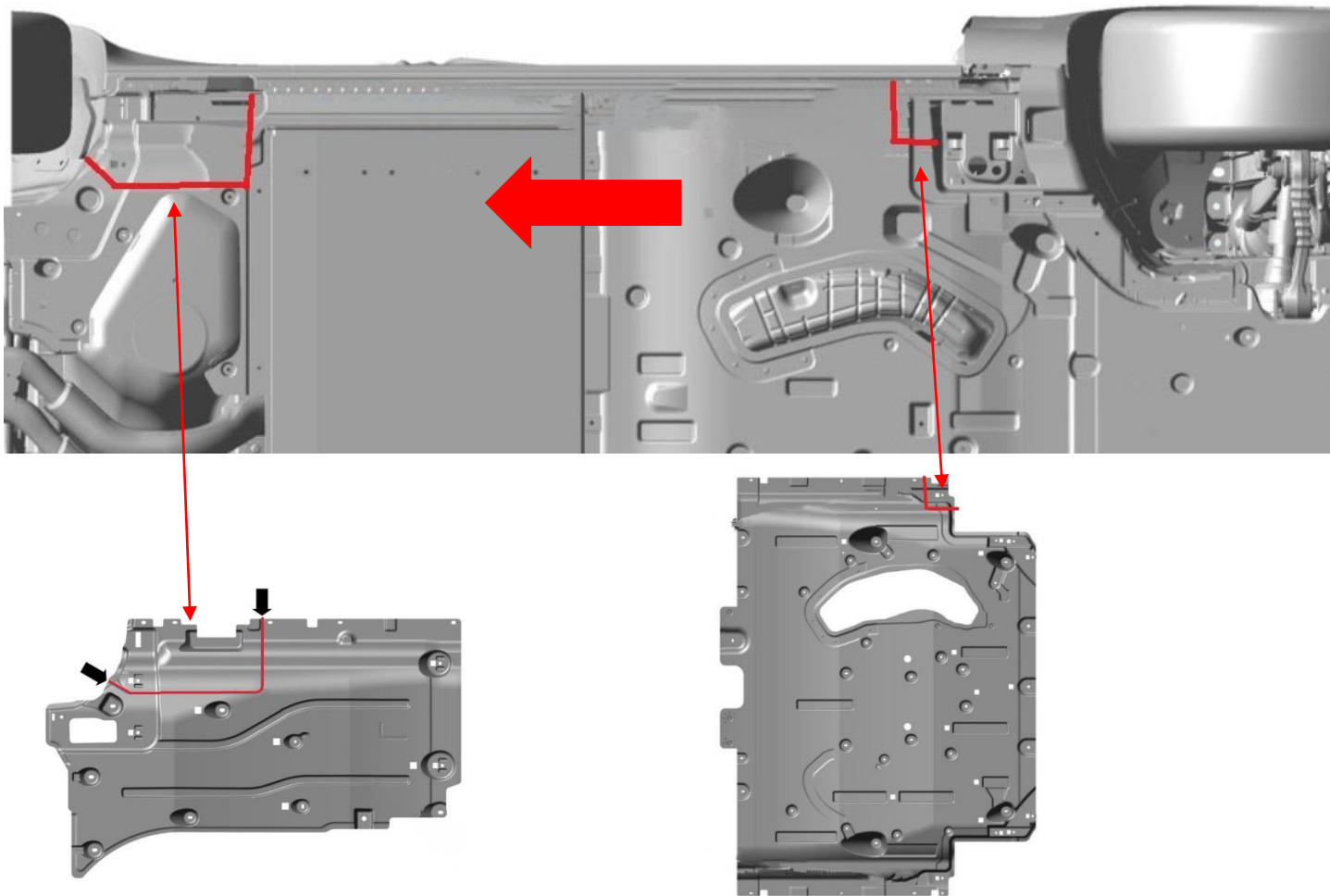
Important Install Tip: When installing Romik HTC inserts follow the sequence below. Make sure the HTC is seated correctly and do not use power tools as this will only spin the insert and possibly damage it. Test by tugging on it before installing bracket. Blue loctite is highly recommended on all metal parts.



PROFESSIONAL INSTALLATION RECOMMENDED.

This installation requires under-tray trimming. Same applies to PHEV models. Test before cutting.

Step 1: Remove bottom plastic panels. Note due to differences in models, we suggest removing panels and trimming them after bracket installation. **PHEV model may differ; however, the trimming is similar.**



Step 2: Due to different variants on the Range Rover line up, we suggest installing the brackets first and trim to fit. Always measure twice and trim once. Short trimming is recommended as you can always trim a little more.

Installation Instructions 2824 Bracket Kit

Step 3: Trim and dispose of the highlighted area Figure 2. This procedure will expose the front mounting location. You do not have to remove the panel. Trim in place.

Step 4: Install front bracket #1 using supplied hardware. Front bolt is 10mm rear bolt larger 12mm Figure 3. Do not tighten.

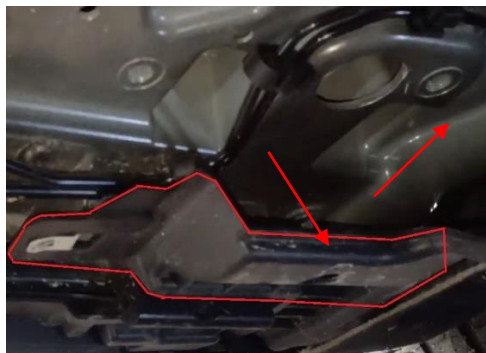
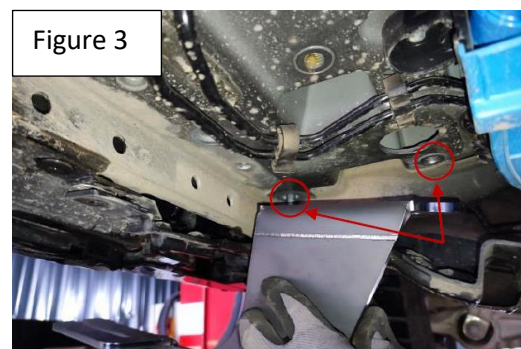
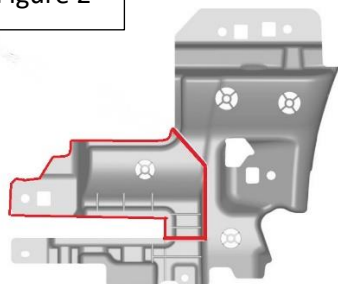


Figure 2



Step 5: Locate rear bracket mounting area Figure 4. If the vehicle is equipped with pre-wiring as in Figure 5, unclip and wire tie out of the way.

Step 6: Using supplied hardware and specialty spacers HTC 283, install rear bracket as shown Figure 6. Do not tighten.

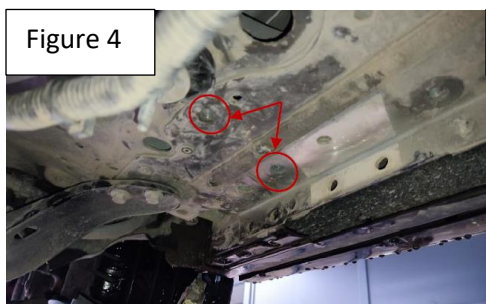


Figure 4

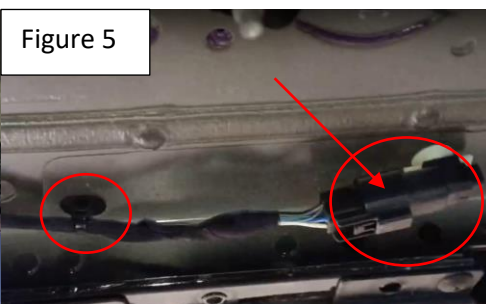


Figure 5

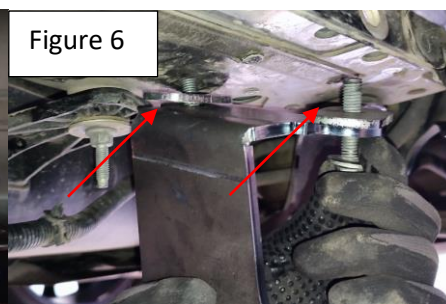


Figure 6

Step 7: Install running boards onto brackets. Hand tighten the running boards and proceed to tighten bracket hardware.

Step 8: Re-install panels and trim as needed. PHEV and non-PHEV models require similar trimming.

Step 9: Repeat opposite side.

Step 10: Proceed to last page of this manual for running board install instructions and torque values.

For Technical support please call our team at 1-866-717-6645 and one of our experts will assist you with this installation.

Thank you for choosing Romik.

Installation Instructions Running Boards

NOTE: Use of power tools will damage the bottom of the running board and void your warranty.

Step 1: loosen the M8 hardware on back of the running boards.

Step 2: Slide running board onto brackets

Step 3: Tighten hardware to 7 ft lbs.

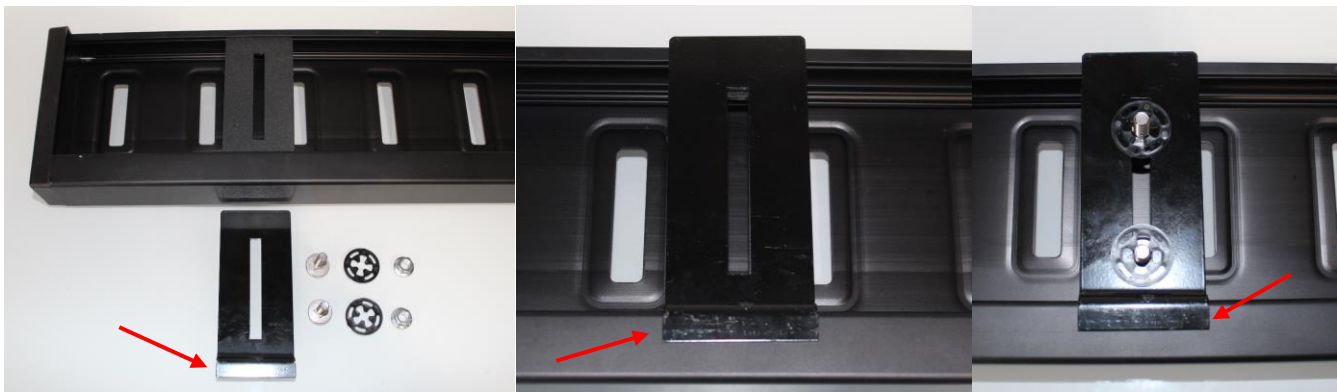


ROF/RPD/ROB Running boards

Step 1: Place clamping plate on top of running board as shown below. Make sure clamping plate sits correctly on running board surface.

Step 2: Install carriage bolts and plastic retaining clips as shown below.

Step 3: Install and tighten hardware to 7 ft lbs.



Product Registration and Warranty Information

- Register your Romik products at <https://romik.com/productregistration>
- Warranty information at <http://www.romik.com/warranty>

Cleaning and maintaining your Romik Running boards

Cleaning and maintaining your running boards is important, apply a light coat of a quality carnauba wax at least 2X per year. Wash often with mild soap and make sure to remove all soap residue. Many car automatic carwashes use a strong soap, make sure to use enough water to remove all residue.

For video instructions on how to clean your Romik products please click here <https://romik.com/cleaning>