



Installation Instructions

Part No. **2224**

Product: Running Boards

Application: **Honda CRV 2023 – Present**

Level of Difficulty: 1 2 **3** 4 5

Installation Time: 90 Min.

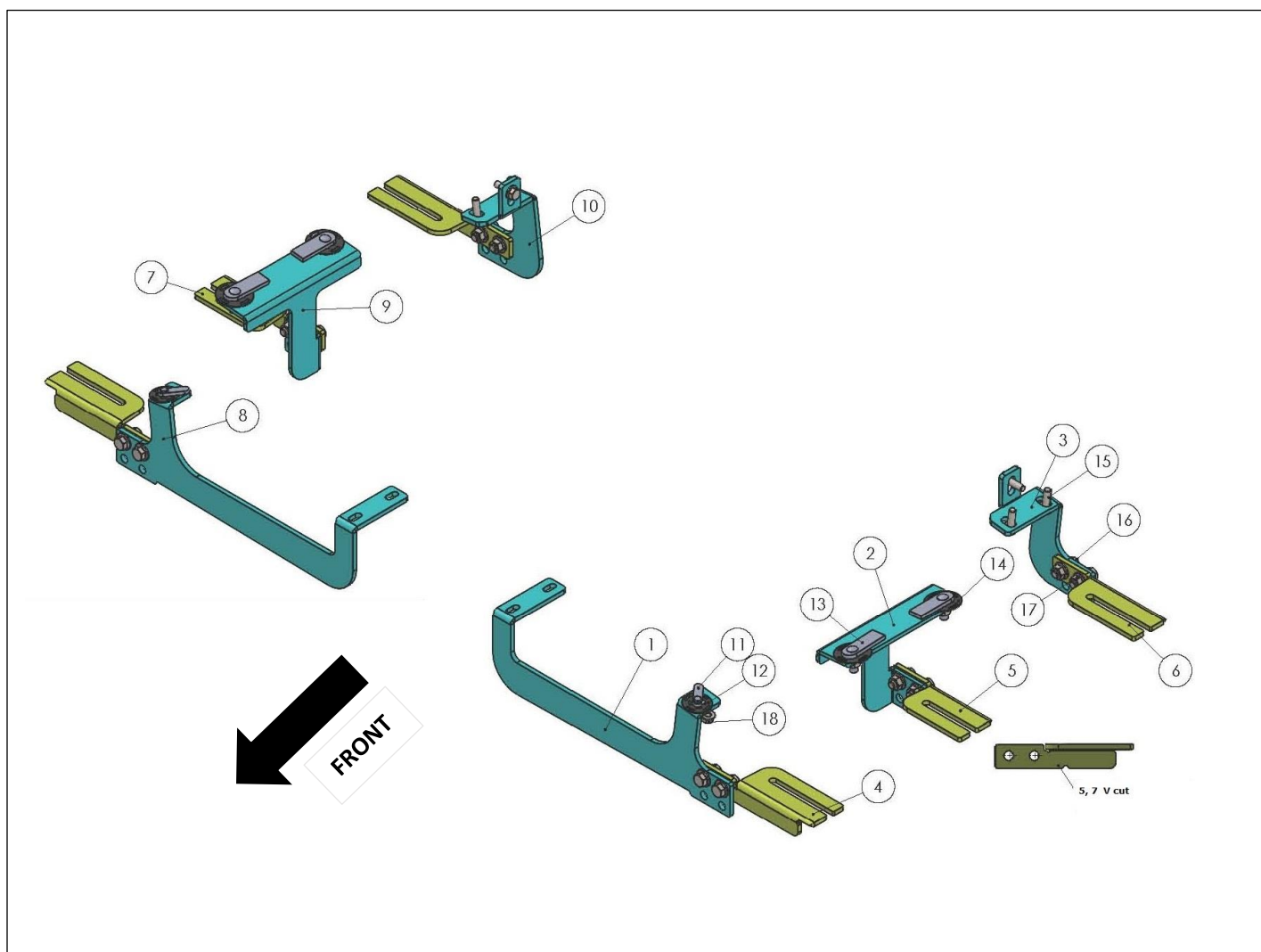
REV 1 08/15/23

Hardware	Torque Aluminum	Torque Steel to Steel
M6 Bolt	3 ft-lbs.	14 ft-lbs.
M8 Bolt	7 ft-lbs.	35 ft-lbs.
M10 Bolt	16 ft-lbs.	64 ft-lbs.
M12 Bolt	28 ft-lbs.	112 ft-lbs.

ATTENTION: Use correct torque settings to avoid damaging the running boards and or mounting brackets. Failure to do so will void your warranty. If you have any questions, please contact our technical team at 1-866-717-6645

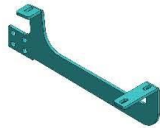
Attention: Please make sure that you have the latest instructions
from *Romik.com*

QR Scan



2224

1



DRIVER SIDE
F0 BRACKET
1 x QTY

2



DRIVER SIDE
C0 BRACKET
1 x QTY

3



DRIVER SIDE
B0 BRACKET
1 x QTY

4



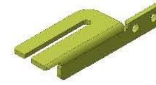
DRIVER/PASSENGER SIDE
FB1 BRACKET
2 x QTY

5



DRIVER SIDE
C1 BRACKET
1 x QTY

6



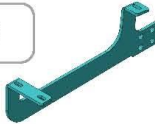
DRIVER/PASSENGER SIDE
FB1 BRACKET
2 x QTY

7



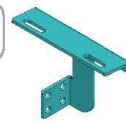
PASSENGER SIDE
C1 BRACKET
1 x QTY

8



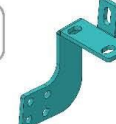
PASSENGER SIDE
F0 BRACKET
1 x QTY

9



PASSENGER SIDE
C0 BRACKET
1 x QTY

10



PASSENGER SIDE
B0 BRACKET
1 x QTY

HARDWARE

11



HTC 226 – M8x25
(4x10x37)
2x

12



HTC 271 -
CLIPS M8
2x

13



HTC 230 – M10x25
(5x20x60)
4x

14



HTC 269 –
CLIPS M10
4x

15



M8x25
FLANGE BOLT
6x

16



M10x25
FLANGE BOLT
12x

17



M10
FLANGE NUT
16x

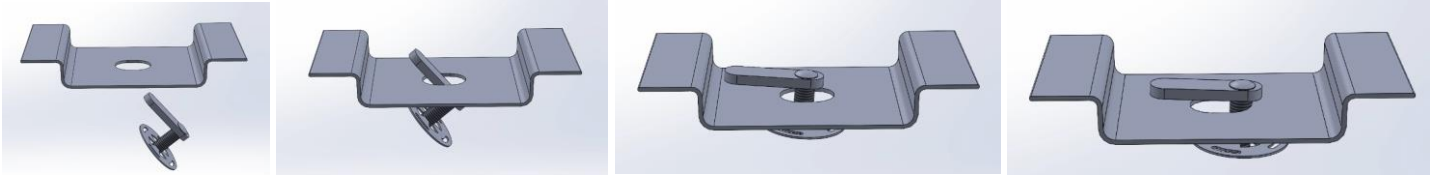
18



M8
NUT
2x

Installation Instructions 2224 Bracket Kit

Important Install Tip: When installing Romik HTC inserts follow the sequence below. Make sure the HTC is seated correctly and do not use power tools as this will only spin the insert and possibly damage it. Test by tugging on it before installing bracket. Blue loctite is highly recommended on all metal parts.



Step 1: Locate the front bracket position. Remove factory chassis bolts, do not discard as they are reused. Remove factory rubber plug as shown on Figure 1. Install provided HTC 226 #11 as shown on Figure 2. Proceed to install front bracket as shown on Figure 3. Attach FB1 front bracket using supplied M10 flange bolts and nuts. Due to the different CRV models choose either the high or low position to clear your factory cladding, most models will use the higher position so start here. Do not tighten.

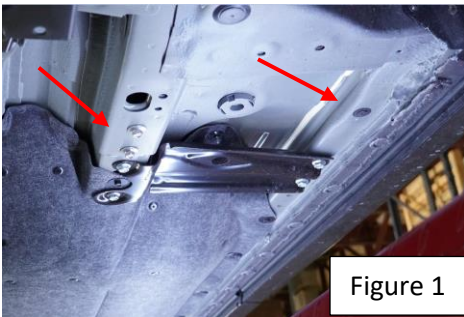


Figure 1

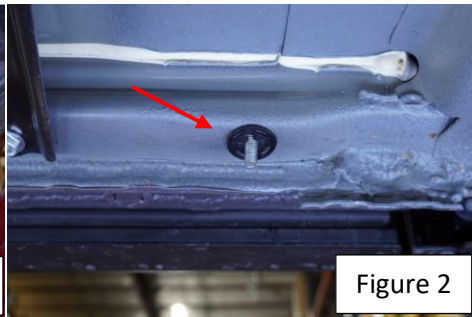


Figure 2

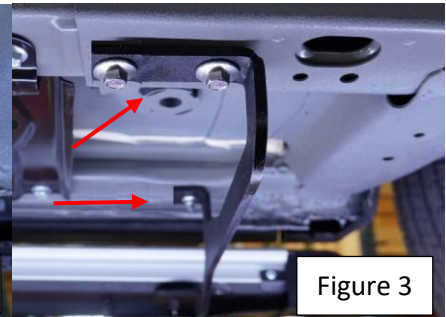


Figure 3

Step 2: Locate the middle bracket position, note green arrows show front door. Remove factory rubber plugs as shown in figure 4. Install provided HTC 230 #13 and install middle bracket Figure 5. Attach C1 Middle bracket using supplied M10 flange bolts and nuts

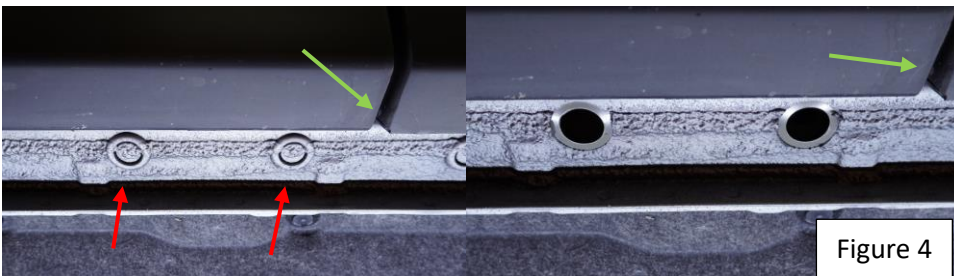


Figure 4

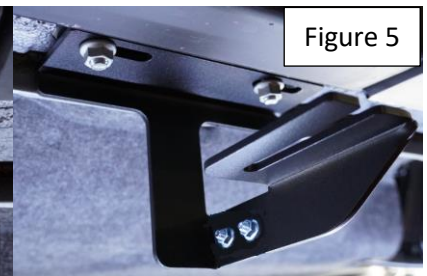
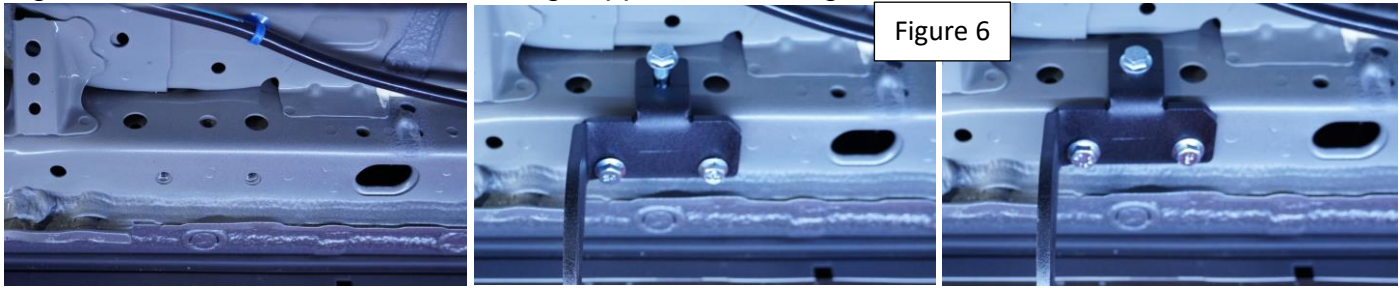


Figure 5

Installation Instructions 2224 Bracket Kit

Step 3: Locate the rear bracket position. Using supplied M8 bolts #15 install rear bracket as shown Figure 6. Attach FB1 rear bracket using supplied M10 flange bolts and nuts



Step 4: Proceed to last page of this manual for running board install instructions and torque values

For Technical support please call our team at 1-866-717-6645 and one of our experts will assist you with this installation.

Thank you for choosing Romik.

Installation Instructions Running Boards

NOTE: Use of power tools will damage the bottom of the running board and void your warranty.

Step 1: loosen the M8 hardware on back of the running boards.

Step 2: Slide running board onto brackets

Step 3: Tighten hardware to 7 ft lbs.



ROF/RPD/ROB Running boards

Step 1: Place clamping plate on top of running board as shown below. Make sure clamping plate sits correctly on running board surface.

Step 2: Install carriage bolts and plastic retaining clips as shown below.

Step 3: Install and tighten hardware to 7 ft lbs.



Product Registration and Warranty Information

- Register your Romik products at <https://romik.com/productregistration>
- Warranty information at <http://www.romik.com/warranty>

Cleaning and maintaining your Romik Running boards

Cleaning and maintaining your running boards is important, apply a light coat of a quality carnauba wax at least 2X per year. Wash often with mild soap and make sure to remove all soap residue. Many car automatic carwashes use a strong soap, make sure to use enough water to remove all residue.

For video instructions on how to clean your Romik products please click here <https://romik.com/cleaning>