



Installation Instructions

Part No. **2818**

Product: Running Boards

Application: **Land Rover Range Rover Sport 2014 - 2022**

Land Rover Discovery 2017 - Present

Level of Difficulty: 1 2 **3** 4 5

Installation Time: 90 Min.

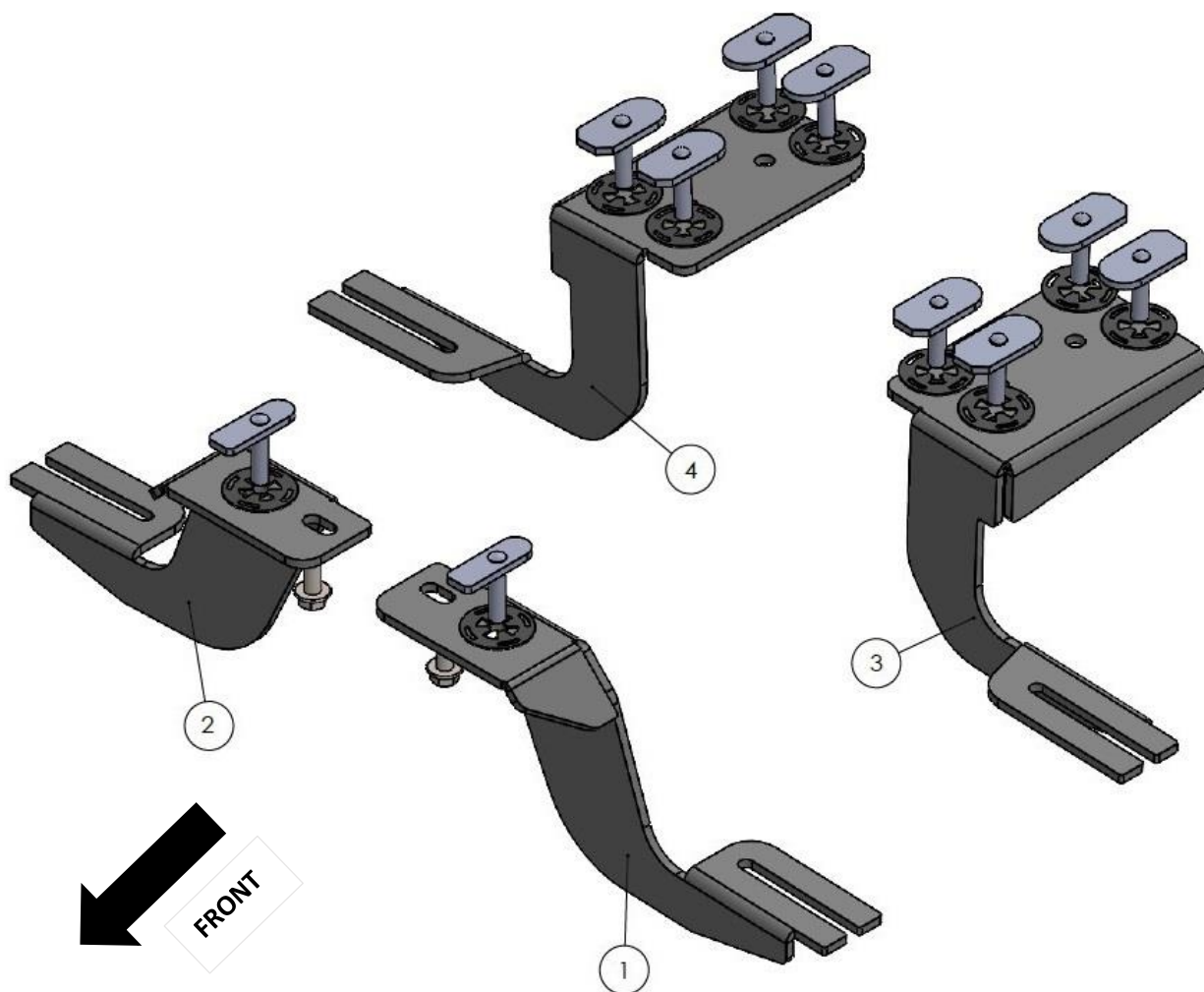
REV 5 08/15/24

Hardware	Torque Aluminum	Torque Steel to Steel
M6 Bolt	3 ft-lbs.	14 ft-lbs.
M8 Bolt	7 ft-lbs.	35 ft-lbs.
M10 Bolt	16 ft-lbs.	64 ft-lbs.
M12 Bolt	28 ft-lbs.	112 ft-lbs.

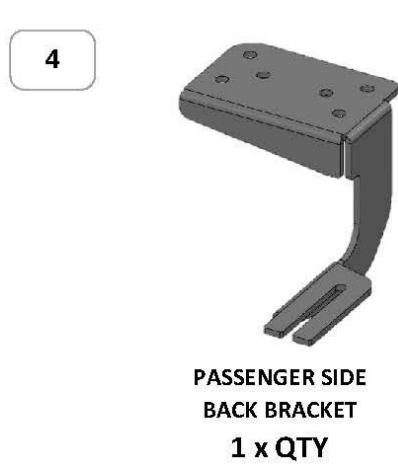
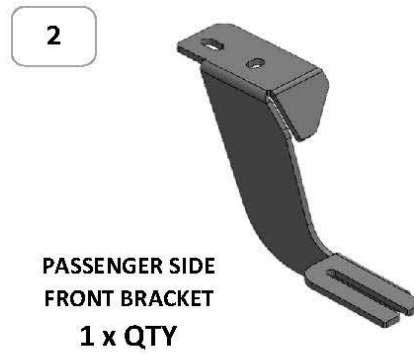
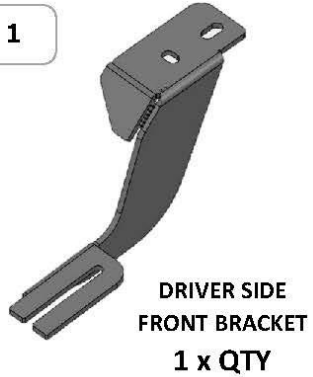
ATTENTION: Use correct torque settings to avoid damaging the running boards and or mounting brackets. Failure to do so will void your warranty. If you have any questions, please contact our technical team at 1-866-717-6645

Attention: Please make sure that you have the latest instructions from **Romik.com**

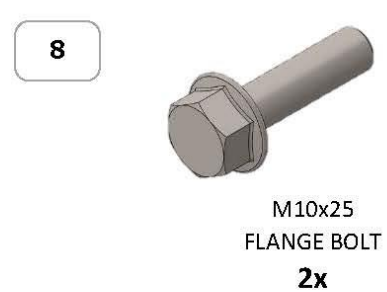
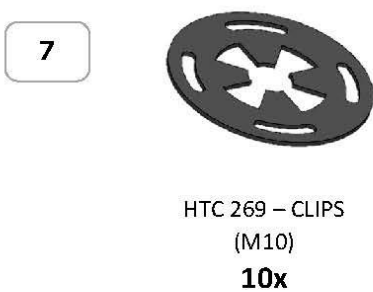
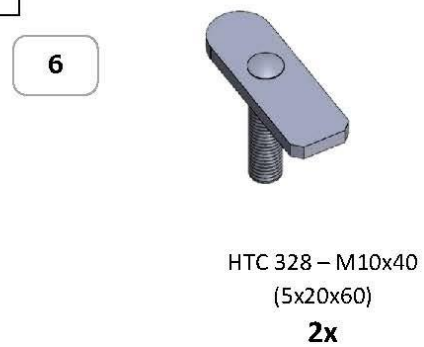
QR Scan



2818 V2

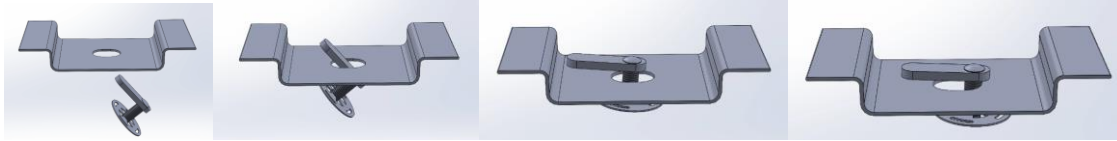


HARDWARE



Installation Instructions 2818 V2 Bracket Kit

Important Install Tip: When installing Romik HTC inserts follow the sequence below. Make sure the HTC is seated correctly and do not use power tools as this will only spin the insert and possibly damage it. Test by tugging on it before installing bracket. Blue loctite is highly recommended.



NOTE: Minor trimming is optional. Brackets can be installed without trimming; however, they will be more difficult to maneuver in place. Please read below and follow instructions. Cut a 5 x 7-inch section on the felt material as shown below. You must expose the mounting points indicated by the red arrow. **ATTENTION** do not remove panels; this procedure must be done with panels installed.

Step 1: Locate front mounting locations as shown on Figure 1. Note red arrow points towards the front of the vehicle. Install provided HTC 328 as shown Figure 2

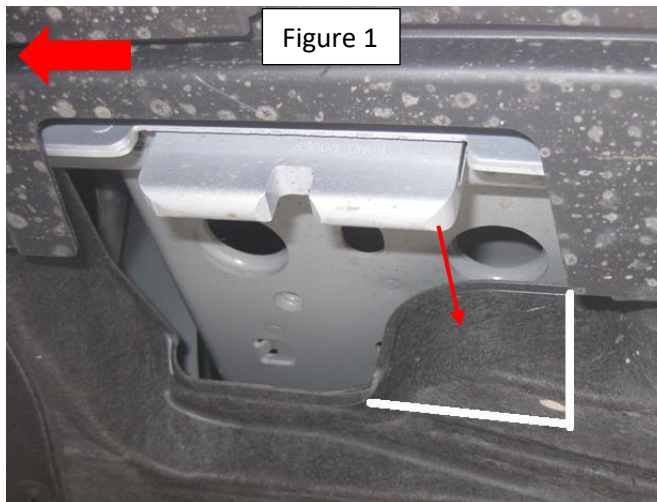


Figure 1

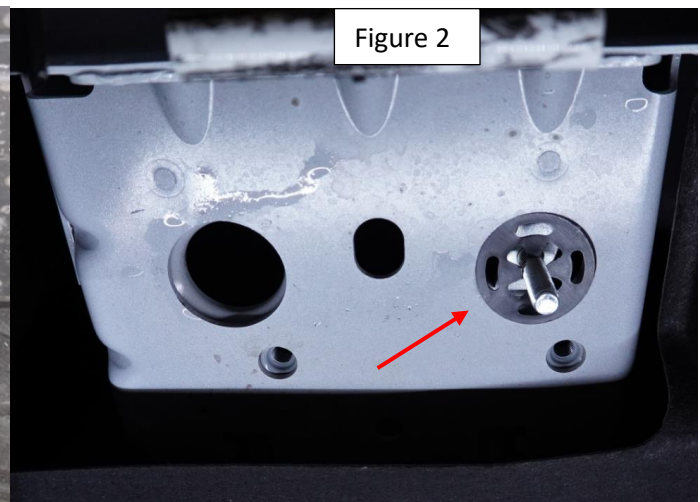


Figure 2

Step 2: Install front bracket using supplied M10 bolt and HTC 328 as shown on Figure 3 Note: Some vehicles may require chasing the threads to remove extra paint or dirt before installing 10mm bolt. Do not fully tighten.

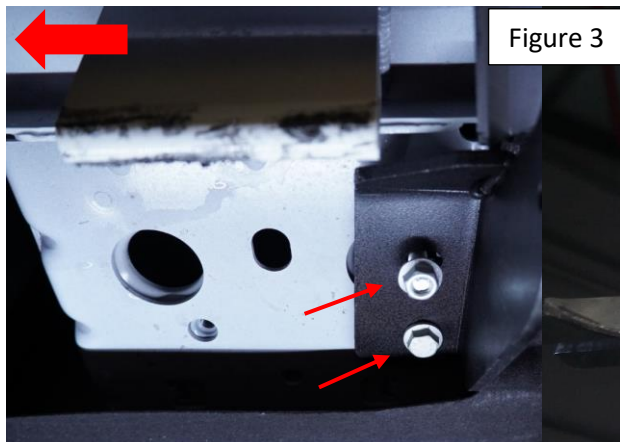
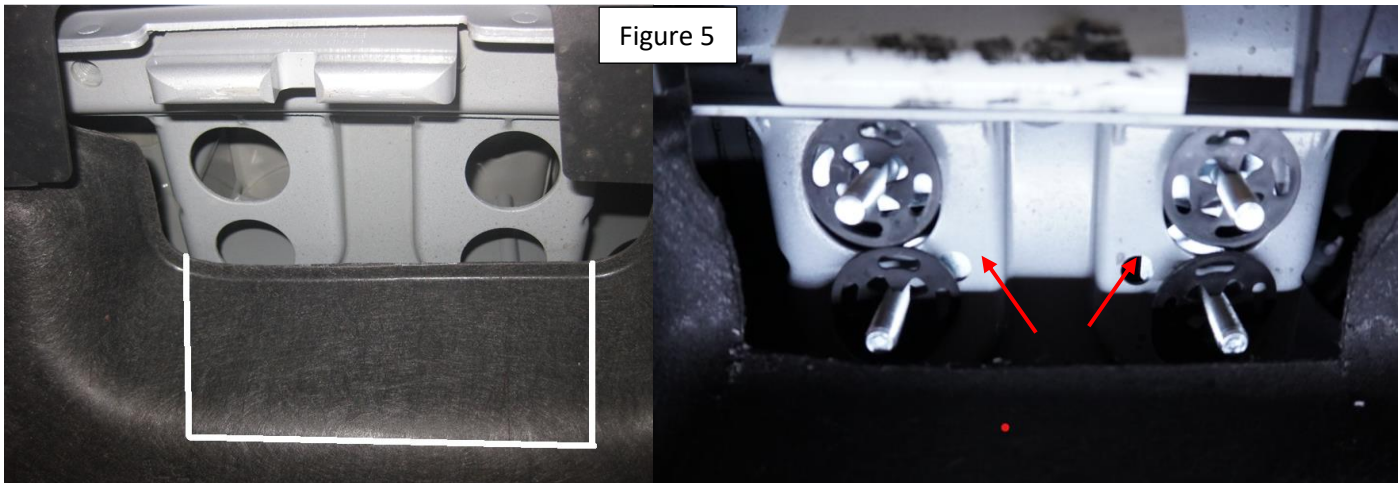


Figure 3

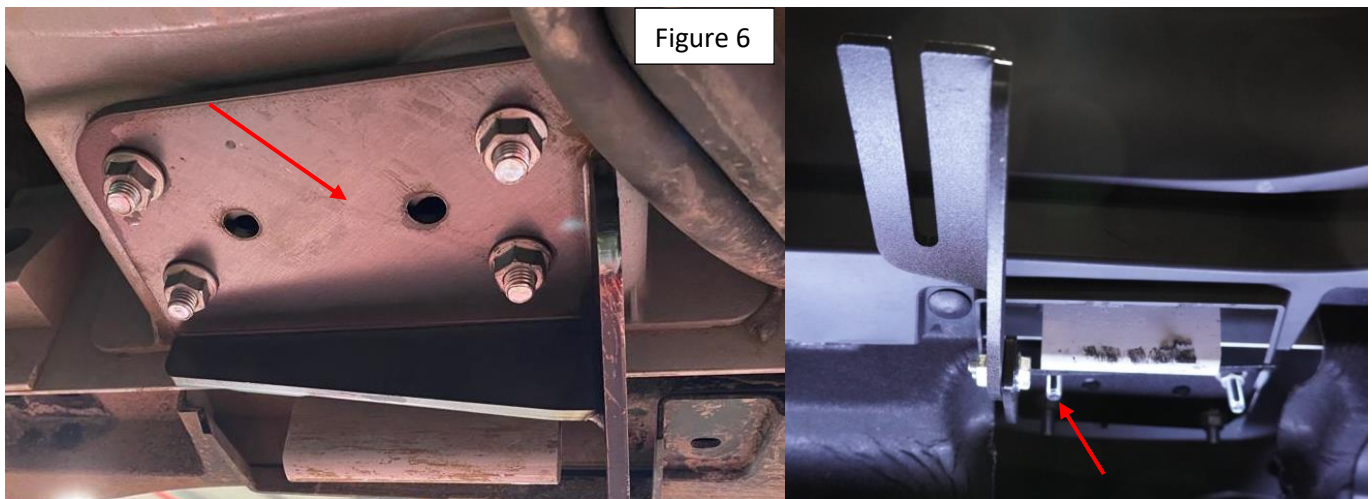


Installation Instructions 2818 V2 Bracket Kit

Step 3: This step must be done after trimming felt panels. Install provided all 4 HTC 326 as shown Figure 5.



Step 4: Install rear bracket as shown Figure 6. Do not fully tighten.



Step 6: Proceed to last page of this manual for running board install instructions and torque values Max torque is 7 ft lbs. Do not overtighten as this may damage the running boards.

For Technical support please call our team at 1-866-717-6645 and one of our experts will assist you with this installation.

Thank you for choosing Romik.

Installation Instructions Running Boards

NOTE: Use of power tools will damage the bottom of the running board and void your warranty.

Step 1: loosen the M8 hardware on back of the running boards.

Step 2: Slide running board onto brackets

Step 3: Tighten hardware to 7 ft lbs.



ROF/RPD/ROB Running boards

Step 1: Place clamping plate on top of running board as shown below. Make sure clamping plate sits correctly on running board surface.

Step 2: Install carriage bolts and plastic retaining clips as shown below.

Step 3: Install and tighten hardware to 7 ft lbs.



Product Registration and Warranty Information

- Register your Romik products at <https://romik.com/productregistration>
- Warranty information at <http://www.romik.com/warranty>

Cleaning and maintaining your Romik Running boards

Cleaning and maintaining your running boards is important, apply a light coat of a quality carnauba wax at least 2X per year. Wash often with mild soap and make sure to remove all soap residue. Many car automatic carwashes use a strong soap, make sure to use enough water to remove all residue.

For video instructions on how to clean your Romik products please click here <https://romik.com/cleaning>