



## Installation Instructions

REV 4 05/01/22

Part No. 2013 / 2015

Product: Running Boards

Application: Crew Cab

Dodge Ram 1500 2009-2018

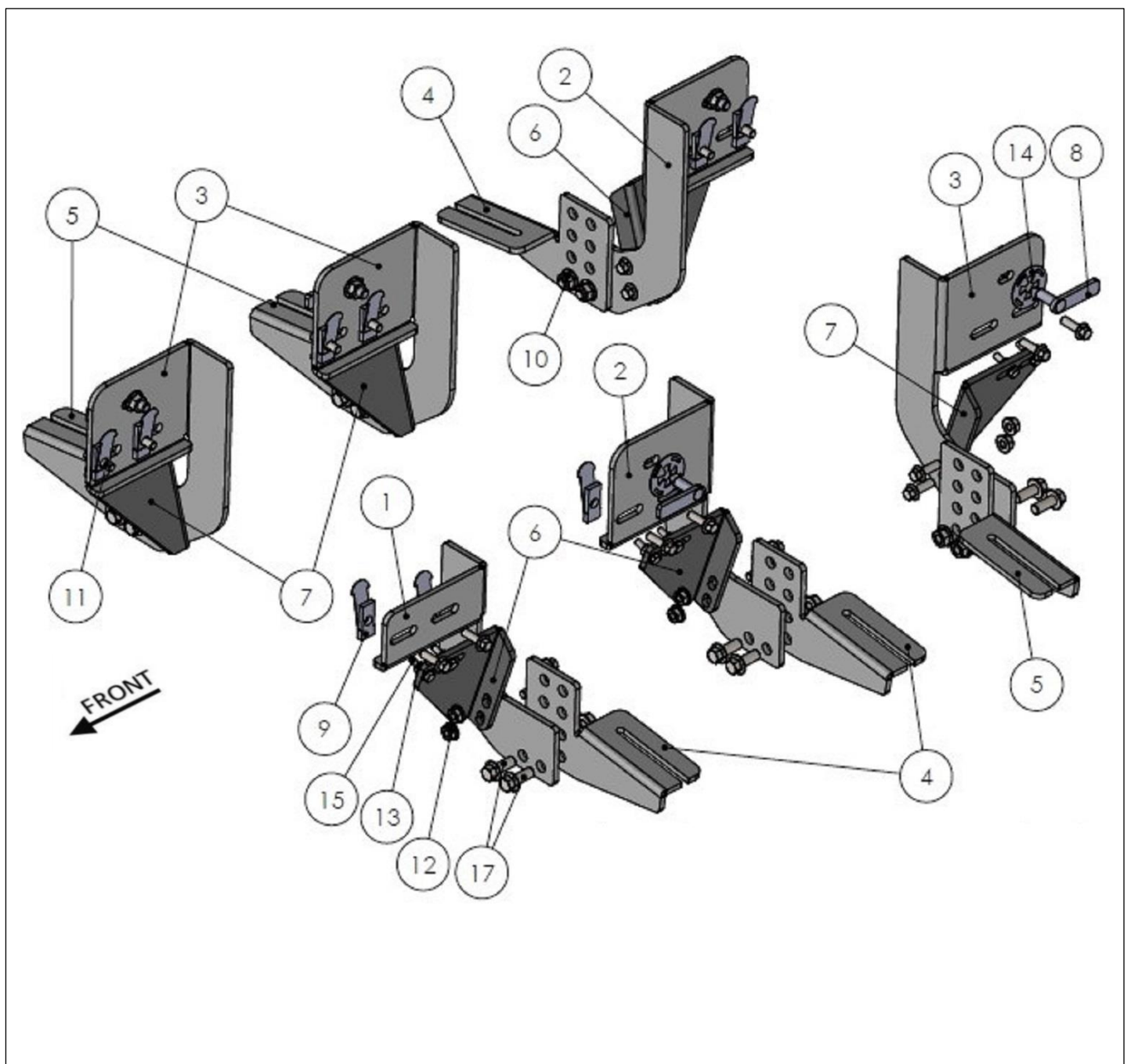
Dodge Ram HD 2019+

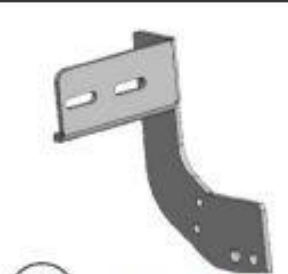
Level of Difficulty: 1 2 3 4 5

Installation Time: 60 Min

Hardware	Torque Aluminum	Torque Steel to Steel
M6 Bolt	3 ft-lbs.	14 ft-lbs.
M8 Bolt	7 ft-lbs.	35 ft-lbs.
M10 Bolt	16 ft-lbs.	64 ft-lbs.
M12 Bolt	28 ft-lbs.	112 ft-lbs.

**ATTENTION:** Use correct torque settings to avoid damaging the running boards and or mounting brackets. Failure to do so will void your warranty. If you have any questions, please contact our technical team at 1-866-717-6645





1  
2013850F0  
DRIVER SIDE  
FRONT BRACKET  
1 x QTY



2  
2013850C0  
DRIVER SIDE MIDDLE/  
PASSENGER SIDE REAR  
BRACKET  
2 x QTY



3  
2013850R0  
DRIVER SIDE REAR/  
PASSENGER SIDE FRONT-MIDDLE  
BRACKET  
3 x QTY



4  
2013850F1  
DRIVER SIDE  
FRONT\_MIDDLE/  
PASSENGER SIDE REAR  
BRACKET  
3 x QTY



5  
2013850R1  
DRIVER SIDE REAR/  
PASSENGER SIDE  
FRONT-MIDDLE  
BRACKET  
3 x QTY



6  
2013850F2  
DRIVER SIDE  
FRONT-MIDDLE/  
PASSENGER SIDE REAR  
SUPPORT BRACKET  
3 x QTY



7  
2013850R3  
DRIVER SIDE REAR/  
PASSENGER SIDE  
FRONT-MIDDLE  
SUPPORT BRACKET  
3 x QTY

## HARDWARE



8  
HTC 262-  
M10x30  
5x15x60  
5x



9  
HTC 311-  
M8  
21.3x11.75  
12x



10  
M10 FLANGE  
NUT  
17x



11  
M8x25  
FLANGE BOLT  
24x



12  
M8 FLANGE  
NUT  
12x



13  
M6 FLANGE  
NUT  
12x



14  
HTC 269-  
CLIPS -(M10)  
5x



15  
M6x25  
BOLT  
12x



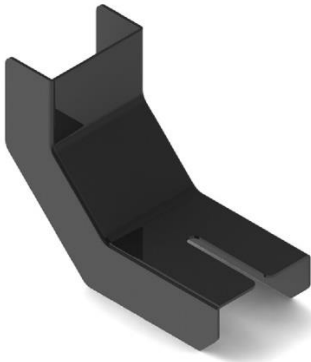
16  
M6  
WASHER  
12x



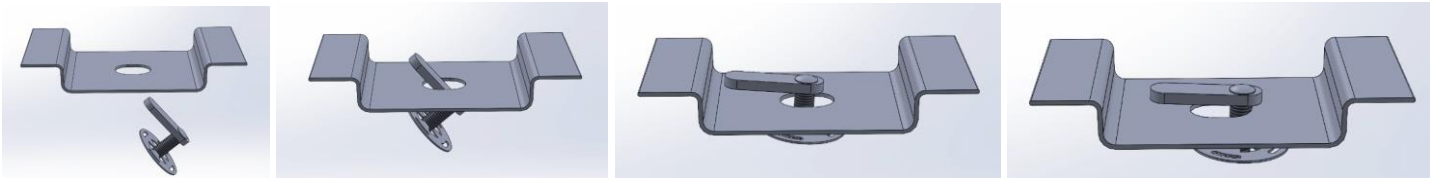
17  
M10x25  
FLANGE BOLT  
12x

# Installation Instructions 2013 / 2015 Bracket Kit

Thank you for choosing the Romik DRP System. This system allows you to adjust the brackets from 0 to 3-inch drop. If you ordered the optional DRP cover you can customize them to match the desired height by cutting on the lines inside the cover. Please test before cutting, in many cases you will be able to tuck the cover behind the body of the vehicle without cutting. **Blue Loctite is recommended** Images below are for illustration purposes only your brackets may look different.

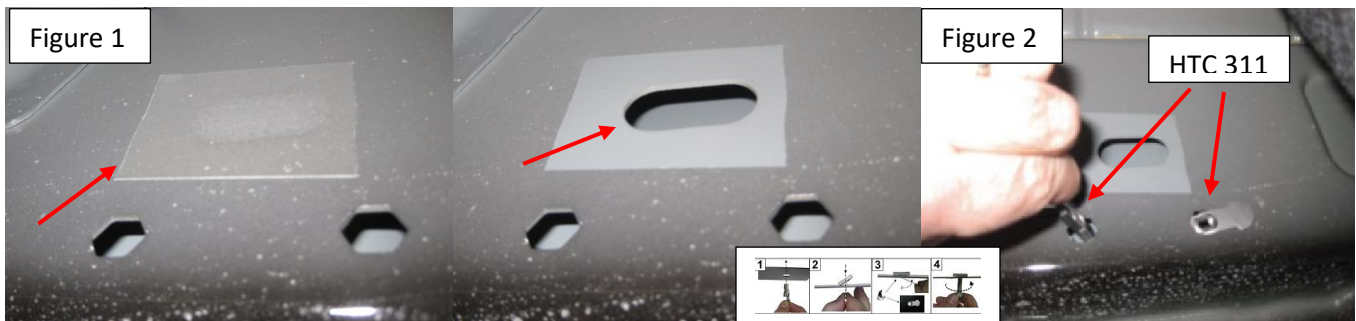


**Important Install Tip:** When installing Romik HTC inserts follow the sequence below. Make sure the HTC is seated correctly and do not use power tools as this will only spin the insert and possibly damage it. Test by tugging on it before installing bracket. Blue loctite is highly recommended.



**Step 1:** Locate front mounting locations and hardware as per 1<sup>st</sup> page of this installation manual.

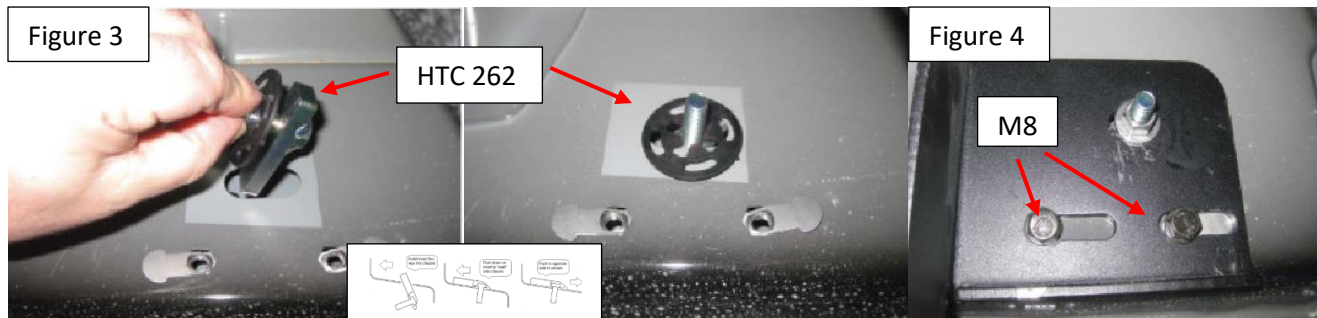
**Step 2:** Remove factory tape from all locations, Insert HTC 311 on all locations as shown Figure 2. Note some models come equiped with threaded inserts and this step may not be necessary.





# Installation Instructions 2013 / 2015 Bracket Kit

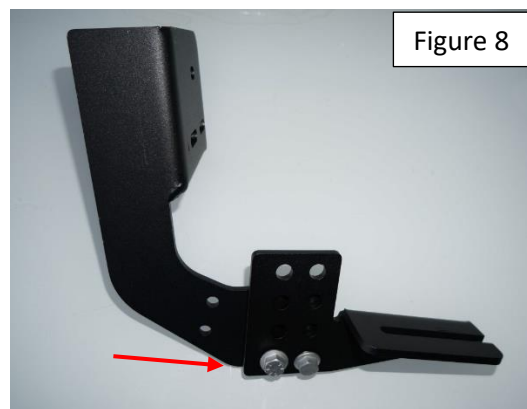
**Step 3:** Install provided HTC 262 as shown on Figure 3, install main bracket as shown on Figure 4. Do not tighten



**Step 4:** Install extra support bracket with supplied M6 hardware on all 3 locations Figure 5, attach using supplied M6 hardware Figure 6. Attach main bracket to extra support using supplied M8 hardware Figure 7.



**Step 5:** Install bracket lower portion and set your desired height. Figure 8.



**Step 6:** Install DRP covers on brackets and proceed to last page of this manual for running board install instructions and torque values. Use of a level is recommended.

**Step 7:** Place a level on the running boards and torque lower portion on DRP brackets to 65 ft lbs.

For Technical support please call our team at 1-866-717-6645 and one of our experts will assist you with this installation.

**Thank you for choosing Romik.**

# Installation Instructions Running Boards

**NOTE: Use of power tools will damage the bottom of the running board and void your warranty.**

**Step 1: loosen the M8 hardware on back of the running boards.**

**Step 2: Slide running board onto brackets**

**Step 3: Tighten hardware to 7 ft lbs.**



## ROF/RPD/ROB Running boards

**Step 1: Place clamping plate on top of running board as shown below.**

**Step 2: Install carriage bolts and plastic retaining clips as shown below.**

**Step 3: Install and tighten hardware to 7 ft lbs.**



## Product Registration and Warranty Information

- Register your Romik products at <https://romik.com/productregistration>
- Warranty information at <http://www.romik.com/warranty>

## Cleaning and maintaining your Romik Running boards

Cleaning and maintaining your running boards is important, apply a light coat of a quality carnauba wax at least 2X per year. Wash often with mild soap and make sure to remove all soap residue. Many car automatic carwashes use a strong soap, make sure to use enough water to remove all residue.

For video instructions on how to clean your Romik products please click here <https://romik.com/cleaning>