



Installation Instructions

Part No. **2217**

Product: Running Boards

Honda Ridgeline 205 - 2014

Level of Difficulty: **1** 2 3 4 5

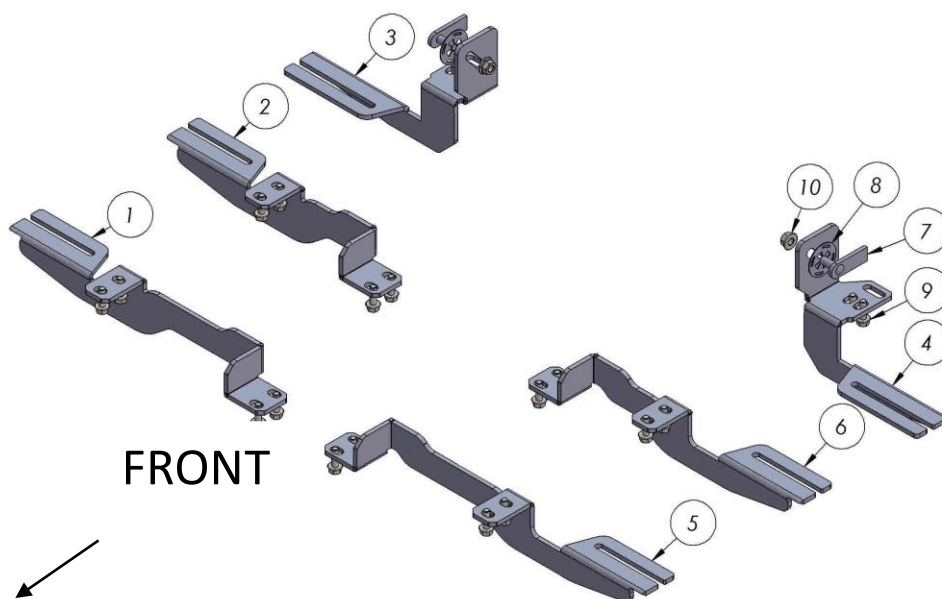
Installation Time: 60 min

REV 2 01/28/14

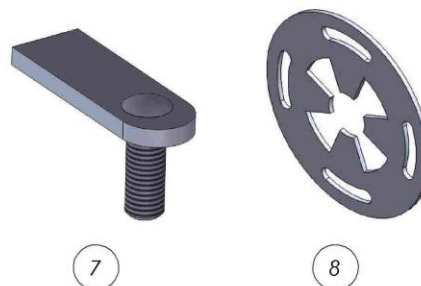
Hardware	Torque Specifications
M6 Bolt	3 ft-lbs.
M8 Bolt	7 ft-lbs.
M10 Bolt	16 ft-lbs.
M12 Bolt	28 ft-lbs.

ATTENTION: Use correct torque settings to avoid damaging the running boards and or mounting brackets. Failure to do so will void your warranty.

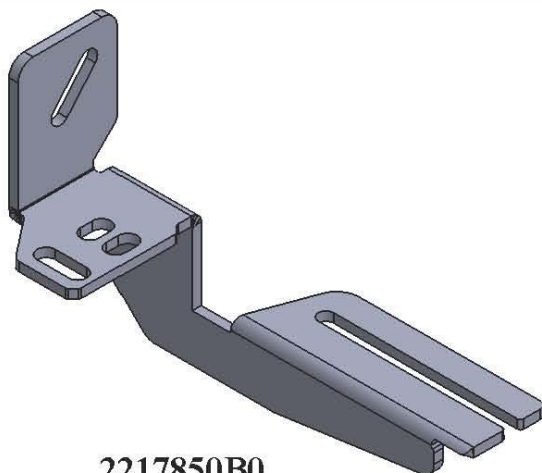
If you have any questions please contact our technical team at 1-866-717-6645



ITEM	PART NUMBER	QTY
1	2217850F0 PASSENGER	1
2	2217850C0 PASSENGER	1
3	2217850B0 PASSENGER	1
4	2217850B0 DRIVER	1
5	2217850F0 DRIVER	1
6	2217850C0 DRIVER	1
7	HTC 230 - M10x25(5x20x60)	2
8	HTC 269 - CLIPS (M10)	2
9	DIN 6921 FLANGE BOLT - M8 x 25	20
10	DIN 6923 FLANGE NUT - M10	2

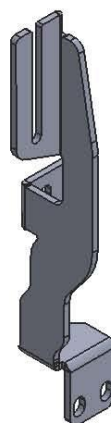


2217 - RIDGELINE 2005 - 2014



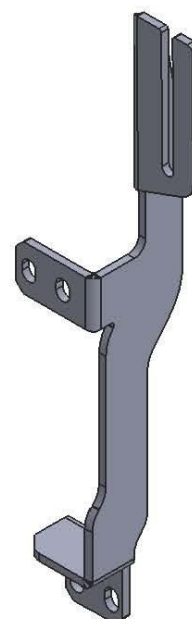
2217850B0

2 x



2217850C0

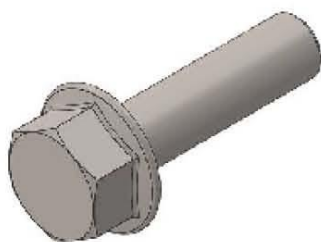
2 x



2217850F0

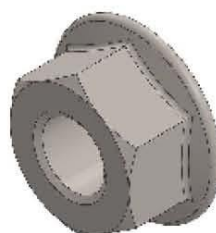
2 x

HARDWARE



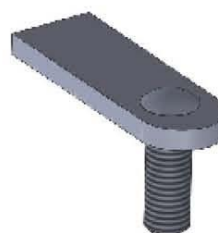
DIN 6921
M8x25

20x



DIN 6923
M10

2x



HTC 230
M10x25(4x20x60)

2x

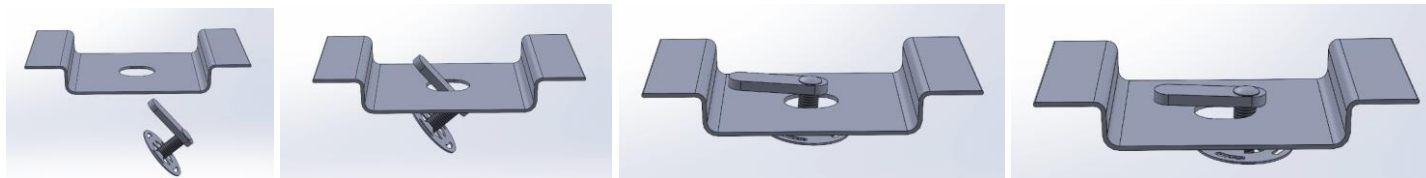


HTC 269
KLIPS (M10)

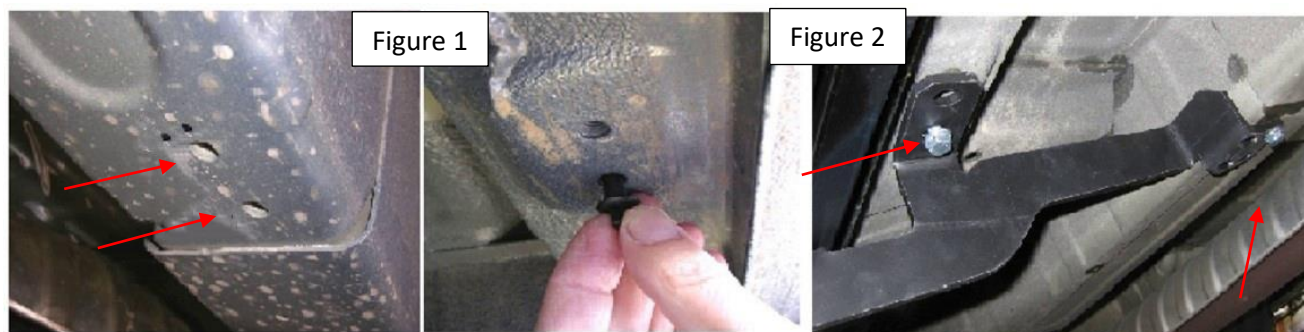
2x

Installation Instructions 2217 Bracket Kit

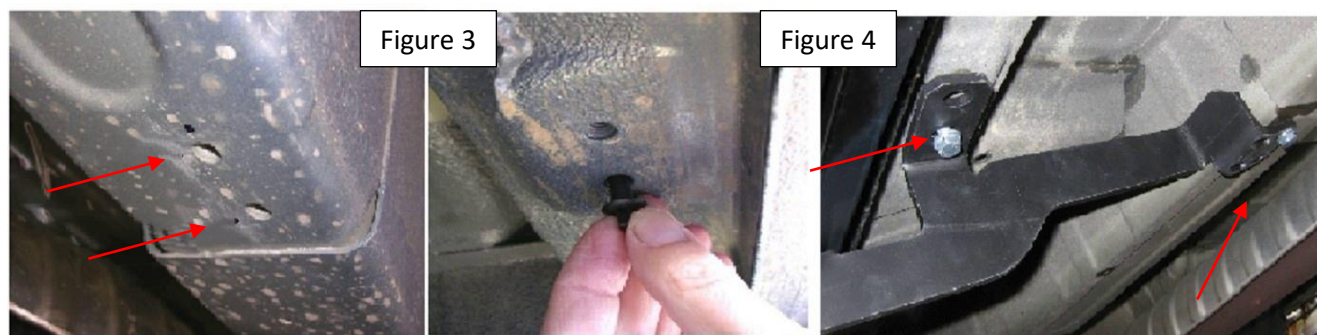
Important Install Tip: When installing Romik HTC inserts follow the sequence below. Make sure the HTC is seated correctly and do not use power tools as this will only spin the insert and possibly damage it. Test by tugging on it before installing bracket. Blue loctite is highly recommended.



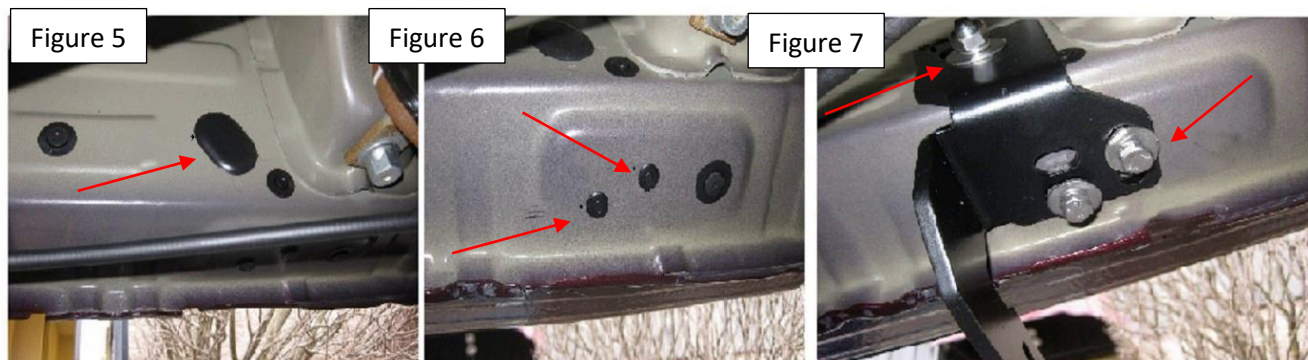
Step 1: Locate front mounting points, remove plastic pins as shown on Figure 1. Install front bracket using supplied M8 hardware Figure 2. Do not tighten.



Step 2: Repeat the same procedure as Step 1. Figure 3 and 4. Do not tighten



Step 3: Locate rear mounting area and remove rubber plug shown on Figure 5. Install provided HTC #7. Remove plugs shown on Figure 6 and proceed to install the rear brackets. Do not tighten



Step 6: Proceed to last page of this manual for running board install instructions and torque values

For Technical support please call our team at 1-866-717-6645 and one of our experts will assist you with this installation.

Thank you for choosing Romik.

Running Board Installation Instructions

NOTE: Use of power tools will damage the bottom of the running board and void your warranty.



RAL / RB2 / REC / RCV / RZR



ROB / ROF / RPD

- 1) Flip your Romik running boards onto a flat surface, make sure to place the running boards on a towel or cardboard in order to protect the surface Figure 1.
- 2) Loosen the M8 bolts on back of your running boards Figure 2. Depending on your model there will be either 6 or 8 bolts installed per side.
- 3) Once your brackets have been installed, place the running board onto the brackets as shown on Figure 3.
- 4) Adjust running boards, centering on vehicle. Hand tight M8 hardware on running boards.
- 5) Follow the torque procedures, torque M8 hardware to **7 ft-lbs** using a torque wrench.
- 6) Cleaning and maintaining your running boards is important, apply a light coat of a quality carnauba wax at least 2X per year. Wash often with mild soap and make sure to remove all soap residue. Many car automatic carwashes use a strong soap, make sure to use enough water to remove all residue.
- 7) Register your products at <https://romik.com/productregistration>
- 8) Warranty information at www.Romik.com/warranty