



## Installation Instructions

REV 3 03/24/20

Part No. **2328**

Product: Running Boards

Application:

**Hyundai Tucson 2016+**

**Kia Sportage 2017+**

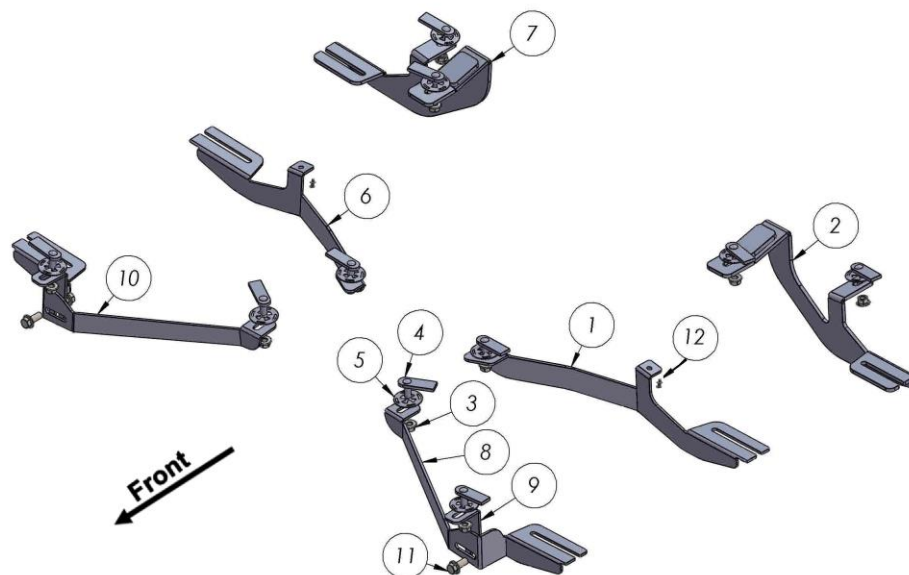
Level of Difficulty: 1 **2** 3 4 5

Installation Time: 60 Min

| Hardware | Torque Specifications |
|----------|-----------------------|
| M6 Bolt  | 3 ft-lbs.             |
| M8 Bolt  | 7 ft-lbs.             |
| M10 Bolt | 16 ft-lbs.            |
| M12 Bolt | 28 ft-lbs.            |

**ATTENTION:** Use correct torque settings to avoid damaging the running boards and or mounting brackets. Failure to do so will void your warranty.

If you have any questions please contact our technical team at 1-866-717-6645



| ITEM | PART NAME                       | QTY |
|------|---------------------------------|-----|
| 1    | 2328850C0 DRIVER                | 1   |
| 2    | 2328850B0 DRIVER                | 1   |
| 3    | DIN 6923 FLANGE NUT - M10       | 12  |
| 4    | HTC 230 - M10x25                | 10  |
| 5    | HTC 269 - CLIPS (M10)           | 10  |
| 6    | 2328850C0 PASSENGER             | 1   |
| 7    | 2328850B0 PASSENGER             | 1   |
| 8    | 2328850F0 DRIVER                | 1   |
| 9    | 2328850F1                       | 2   |
| 10   | 2328850F0 PASSENGER             | 1   |
| 11   | DIN 6921 FLANGE BOLT - M10 x 25 | 2   |



# Installation Instructions 2328 Bracket Kit

Video  
Installation  
Instruction:

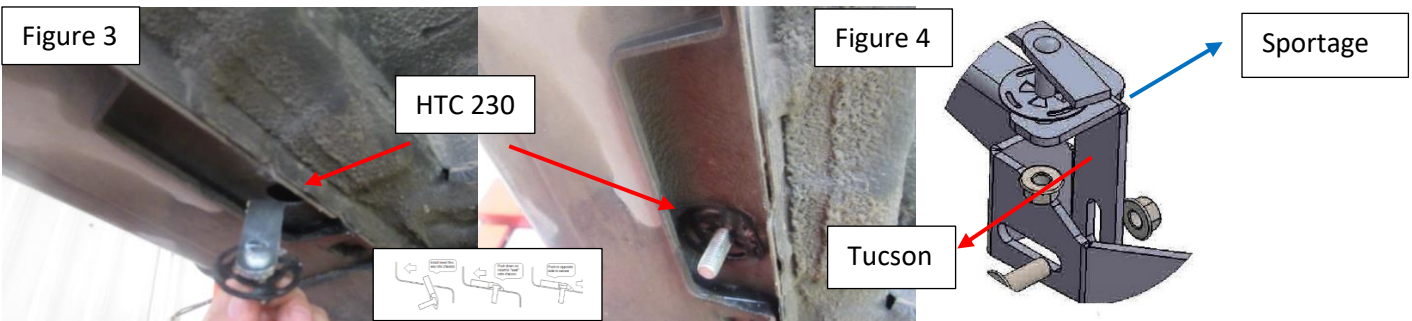


**Step 1:** Locate front mounting locations and hardware as per 1<sup>st</sup> page of this installation manual

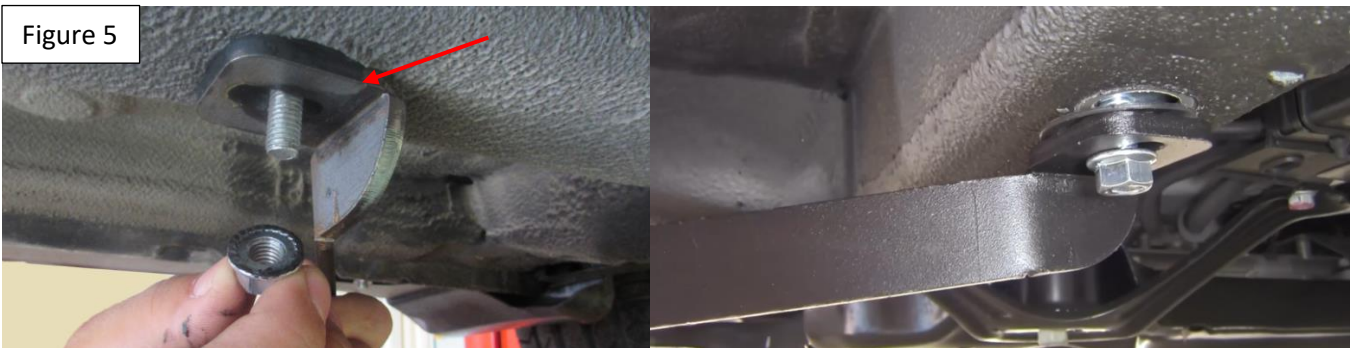
**Step 2:** Locate and remove factory rubber plug Figure 1. Install HTC 230 as shown Figure 2



**Step 3:** Remove factory rubber plug on extra support mounting area Figure 3 install HTC 230. Install extra support as shown on Figure 4 if installing on a Tucson the support points forward. If installing on a Sportage the support points rearwards.



**Step 4:** Install front main bracket and attach to extra support Figure 5. Do not tighten

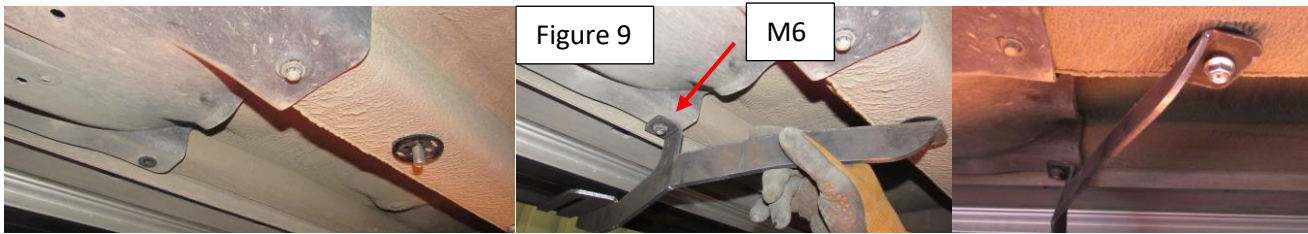


**Step 5:** Locate middle bracket mounting area, remove rubber plug and 6mm factory bolt Figures 6, 7. Install HTC 230 Figure 8



# Installation Instructions 2328 Bracket Kit

**Step 6:** Install middle bracket using supplied M6 hardware Figure 9. Do not tighten



**Step 7:** Locate rear bracket install area and remove factory rubber plug Figure 10 Install HTC 230 as shown Figure 11



**Step 8:** Remove factory plug Figure 12, install HTC 230 as shown Figure 13. Install rear bracket Figure 14. Do not tighten



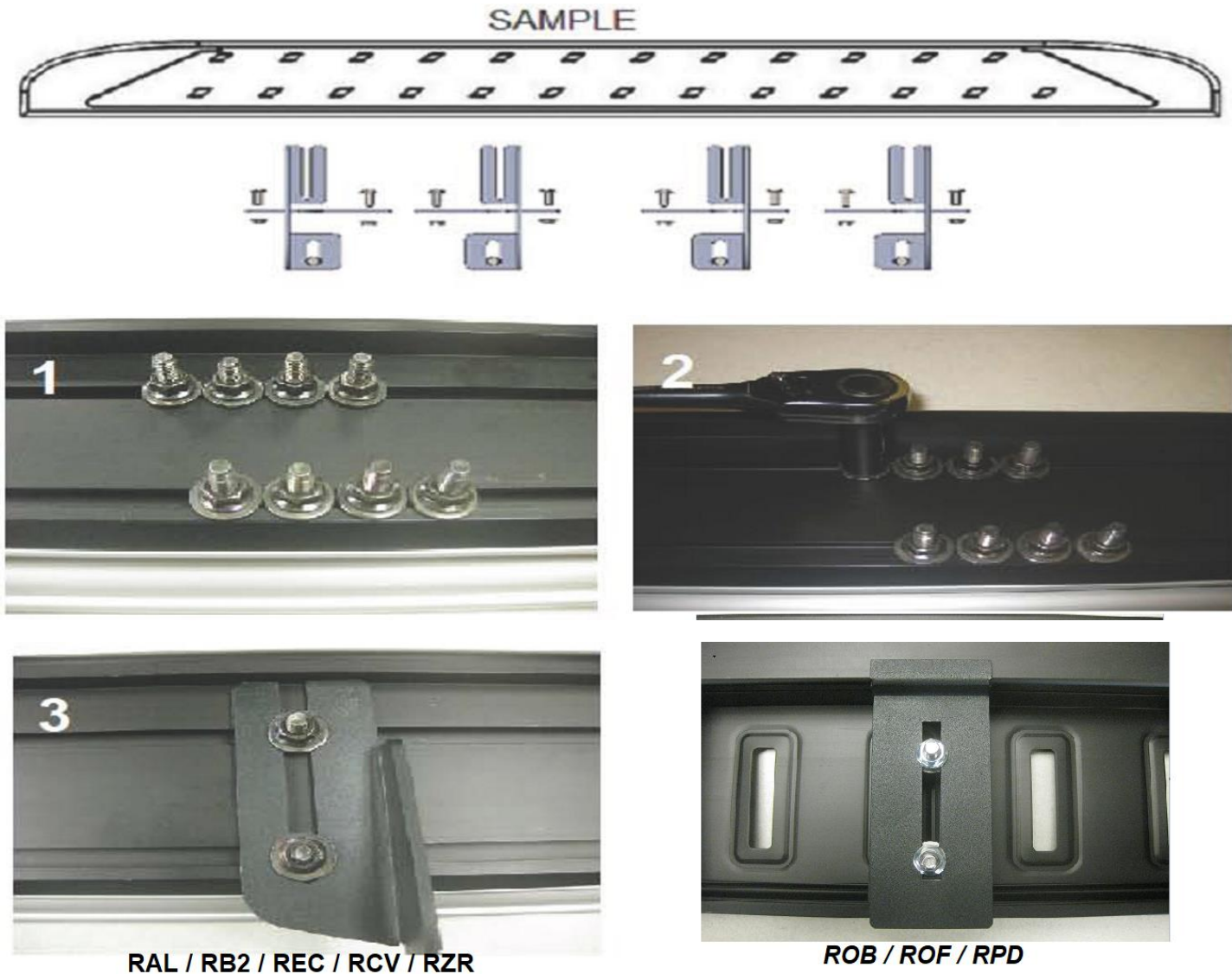
**Step 9:** Proceed to last page of this manual for running board install instructions and torque values

For Technicall support please call our team at 1-866-717-6645 and one of our experts will assist you with this installation

***Thank you for choosing Romik.***



# Running Board Installation Instructions



- 1) Flip your Romik running boards onto a flat surface, make sure to place the running boards on a towel or cardboard in order to protect the surface Figure 1.
- 2) Loosen the M8 bolts on back of your running boards Figure 2. Depending on your model there will be either 6 or 8 bolts installed per side.
- 3) Once your brackets have been installed, place the running board onto the brackets as shown on Figure 3.
- 4) Adjust running boards, centering on vehicle. Hand tight M8 hardware on running boards.
- 5) Follow the torque procedures, torque M8 hardware to **7 ft-lbs** using a torque wrench.
- 6) Cleaning and maintaining your running boards is important, apply a light coat of a quality carnauba wax at least 2X per year. Wash often with mild soap and make sure to remove all soap residue. Many car automatic carwashes use a strong soap, make sure to use enough water to remove all residue.
- 7) Register your products at [www.Romik.com/contact/productregistration](http://www.Romik.com/contact/productregistration)
- 8) Warranty information at [www.Romik.com/warranty](http://www.Romik.com/warranty)