



## Installation Instructions

Part No. **2620**

Product: Running Boards

Application: **Jeep Wrangler JL 2007-2018**

Level of Difficulty: **1 2 3 4 5**

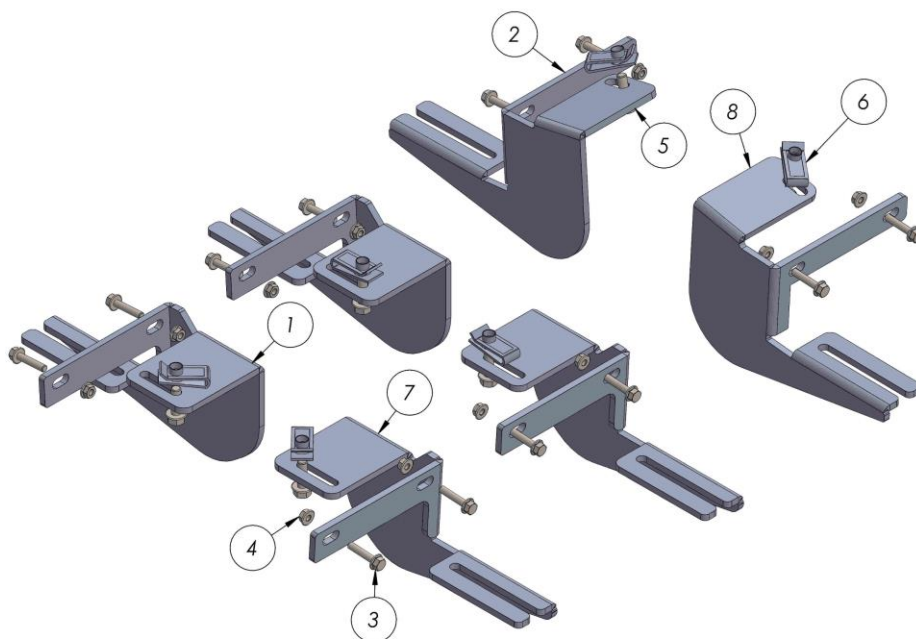
Installation Time: 60 min

REV 2 09 / 03 /21

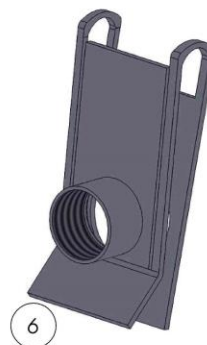
Hardware	Torque Specifications
M6 Bolt	3 ft-lbs.
M8 Bolt	7 ft-lbs.
M10 Bolt	16 ft-lbs.
M12 Bolt	28 ft-lbs.

**ATTENTION:** Use correct torque settings to avoid damaging the running boards and or mounting brackets. Failure to do so will void your warranty.

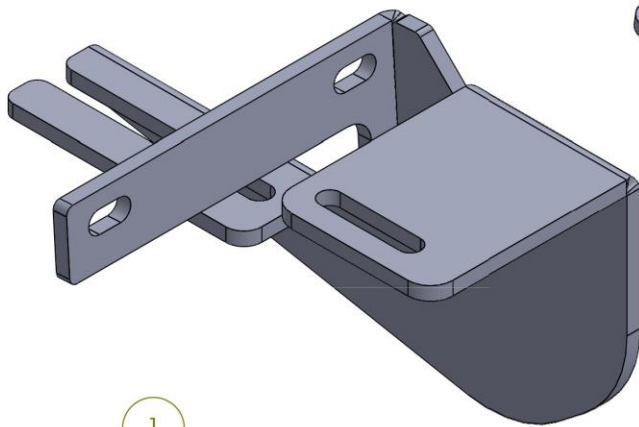
*If you have any questions, please contact our technical team at 1-866-717-6645*



ITEM	PART NUMBER	QTY
1	2620850FC0 PASSENGER	2
2	2620850B0 PASSENGER	1
3	DIN 6921 FLANGE NUT - M8	12
4	DIN 6921 FLANGE BOLT - M8x25 Black	12
5	DIN 6921 FLANGE BOLT - M8 x 25	6
6	M8 U-NUT	6
7	2620850FC0 DRIVER	2
8	2620850B0 DRIVER	1

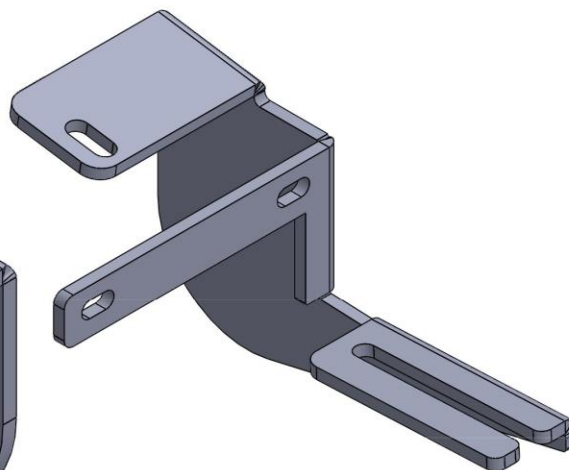


## 2620 - Jeep Wrangler JK 2007-2018



1

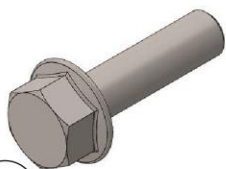
2620850FC0  
FRONT-MIDDLE  
BRACKET  
4 x QTY



2

2620850B0  
REAR BRACKET  
2 x QTY

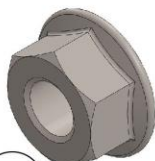
### HARDWARE



3

DIN 6921  
FLANGE BOLT M8x25

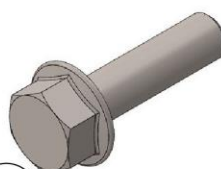
12x



4

DIN 6923  
FLANGE NUT M6

12x



5

DIN 6921  
FLANGE BOLT M8x25

6x



6

M8 U NUT

6x

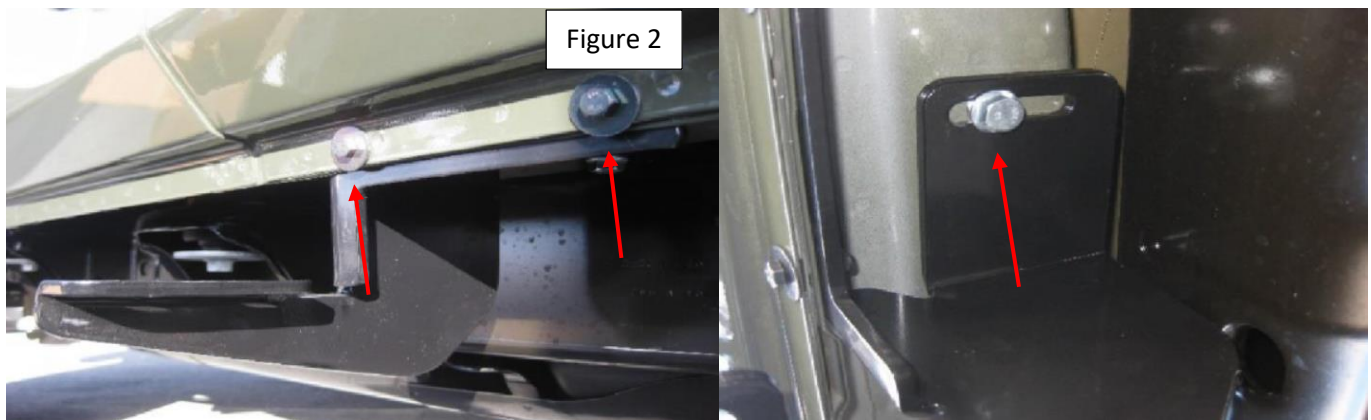
# Installation Instructions 2620 Bracket Kit

**Step 1:** Locate front mounting locations and hardware as per 1<sup>st</sup> page of this installation manual All mounting locations are identical please review bracket direction during installation.



**Step 2:** Install bracket using supplied M8 hardware Figure 2 Do not tighten. Repeat for remaining brackets.

Note: Images show washers, update hardware uses shoulder bolts with built in washers.

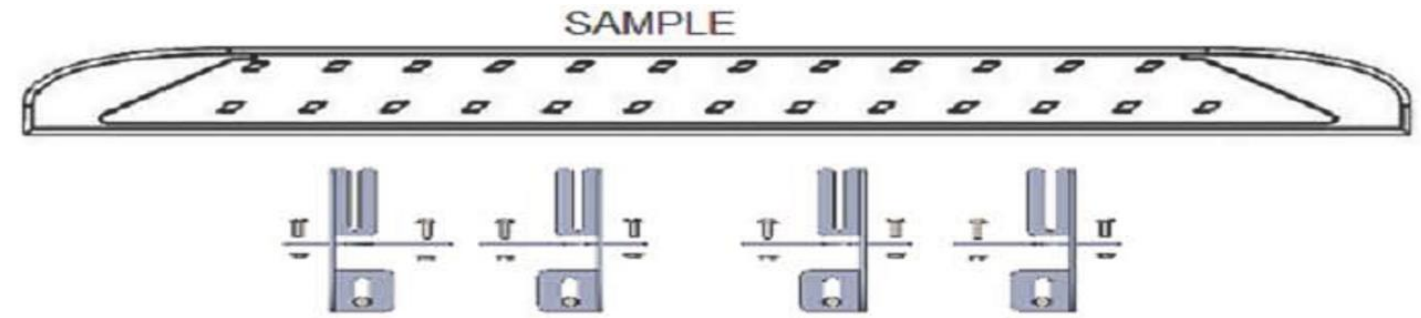


**Step 3:** Proceed to last page of this manual for running board install instructions and torque values

For Technical support please call our team at 1-866-717-6645 and one of our experts will assist you with this installation.

***Thank you for choosing Romik.***

# Running Board Installation Instructions



**RAL / RB2 / REC / RCV / RZR**



**ROB / ROF / RPD**

- 1) Flip your Romik running boards onto a flat surface, make sure to place the running boards on a towel or cardboard in order to protect the surface Figure 1.
- 2) Loosen the M8 bolts on back of your running boards Figure 2. Depending on your model there will be either 6 or 8 bolts installed per side.
- 3) Once your brackets have been installed, place the running board onto the brackets as shown on Figure 3.
- 4) Adjust running boards, centering on vehicle. Hand tight M8 hardware on running boards.
- 5) Follow the torque procedures, torque M8 hardware to **7 ft-lbs** using a torque wrench.
- 6) Cleaning and maintaining your running boards is important, apply a light coat of a quality carnauba wax at least 2X per year. Wash often with mild soap and make sure to remove all soap residue. Many car automatic carwashes use a strong soap, make sure to use enough water to remove all residue.
- 7) Register your products at [www.Romik.com/contact/productregistration](http://www.Romik.com/contact/productregistration)
- 8) Warranty information at [www.Romik.com/warranty](http://www.Romik.com/warranty)