



## Installation Instructions

REV 4 11 / 03 / 21

Part No. **2622**

Product: Running Boards

Application:

**2622 Jeep Gladiator 2019+**

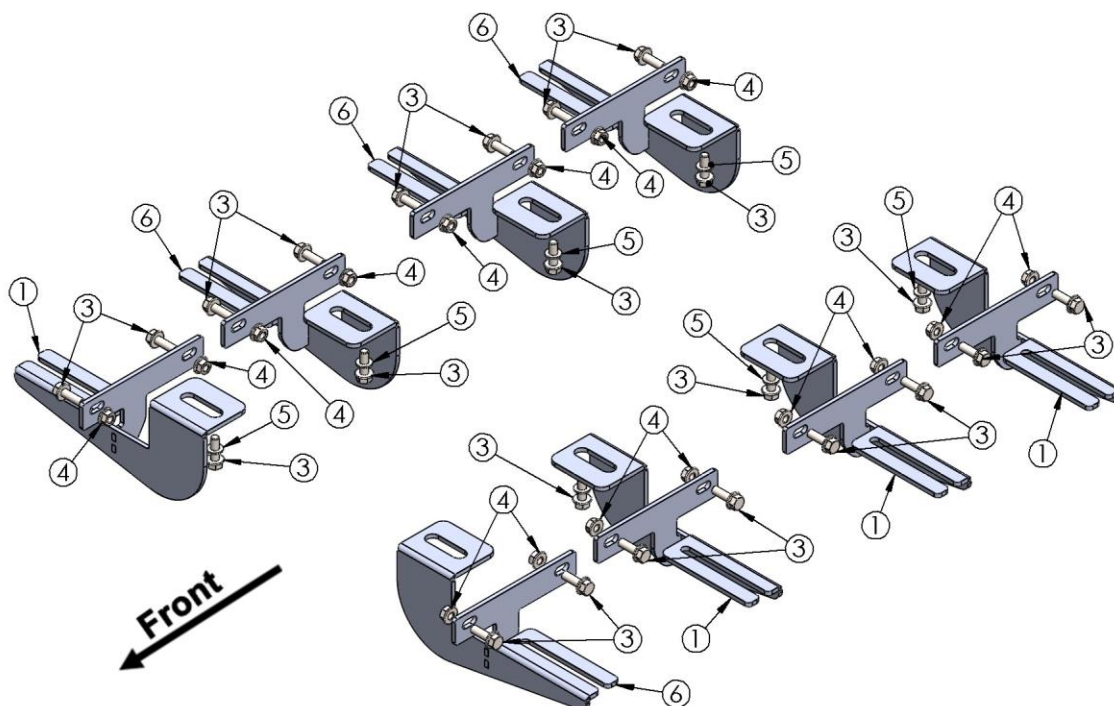
Level of Difficulty: **1 2 3 4 5**

Installation Time: 60 min

Hardware	Torque Specifications
M6 Bolt	3 ft-lbs.
M8 Bolt	7 ft-lbs.
M10 Bolt	16 ft-lbs.
M12 Bolt	28 ft-lbs.

**ATTENTION:** Use correct torque settings to avoid damaging the running boards and or mounting brackets. Failure to do so will void your warranty.

If you have any questions please contact our technical team at 1-866-717-6645



ITEM	PART NAME	QTY
1	2622850FCB0	4
3	DIN 6921 - M8 X 25 X 25-N	8
3	DIN 6921 FLANGE BOLT - M8 x 25	16
4	DIN 6923 FLANGE NUT - M8	16
5	DIN 125 WASHER - M8	8
6	2622850FCB0	4

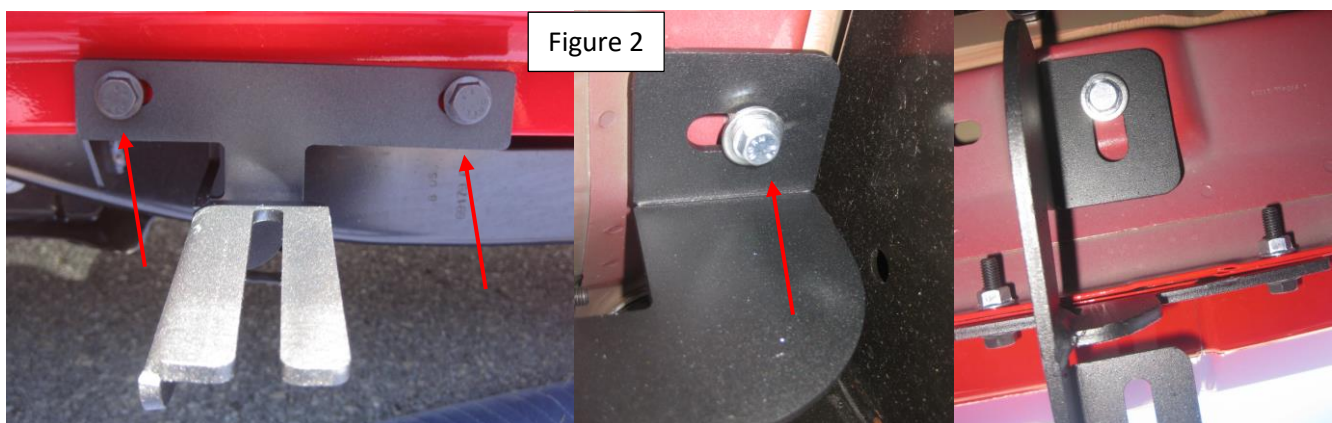
# Installation Instructions 2622 Bracket Kit

**NOTE:** Due to the body design of the Gladiator JT there is a small visible gap in front and rear to review please visit [www.Romik.com](http://www.Romik.com)

**Step 1:** Locate front mounting locations and hardware as per 1<sup>st</sup> page of this installation manual All mounting locations are identical please review bracket direction during installation.



**Step 2:** Install bracket using supplied M8 hardware Figure 2 Do not tighten. Repeat for remaining brackets.



**Step 3:** Proceed to last page of this manual for running board install instructions and torque values

For Technical support please call our team at 1-866-717-6645 and one of our experts will assist you with this installation.

***Thank you for choosing Romik.***

# Running Board Installation Instructions

**NOTE: Use of power tools will damage the bottom of the running board and void your warranty.**



**RAL / RB2 / REC / RCV / RZR**



**ROB / ROF / RPD**

- 1) Flip your Romik running boards onto a flat surface, make sure to place the running boards on a towel or cardboard in order to protect the surface Figure 1.
- 2) Loosen the M8 bolts on back of your running boards Figure 2. Depending on your model there will be either 6 or 8 bolts installed per side.
- 3) Once your brackets have been installed, place the running board onto the brackets as shown on Figure 3.
- 4) Adjust running boards, centering on vehicle. Hand tight M8 hardware on running boards.
- 5) Follow the torque procedures, torque M8 hardware to **7 ft-lbs** using a torque wrench.
- 6) Cleaning and maintaining your running boards is important, apply a light coat of a quality carnauba wax at least 2X per year. Wash often with mild soap and make sure to remove all soap residue. Many car automatic carwashes use a strong soap, make sure to use enough water to remove all residue.
- 7) Register your products at <https://romik.com/productregistration>
- 8) Warranty information at [www.Romik.com/warranty](http://www.Romik.com/warranty)