



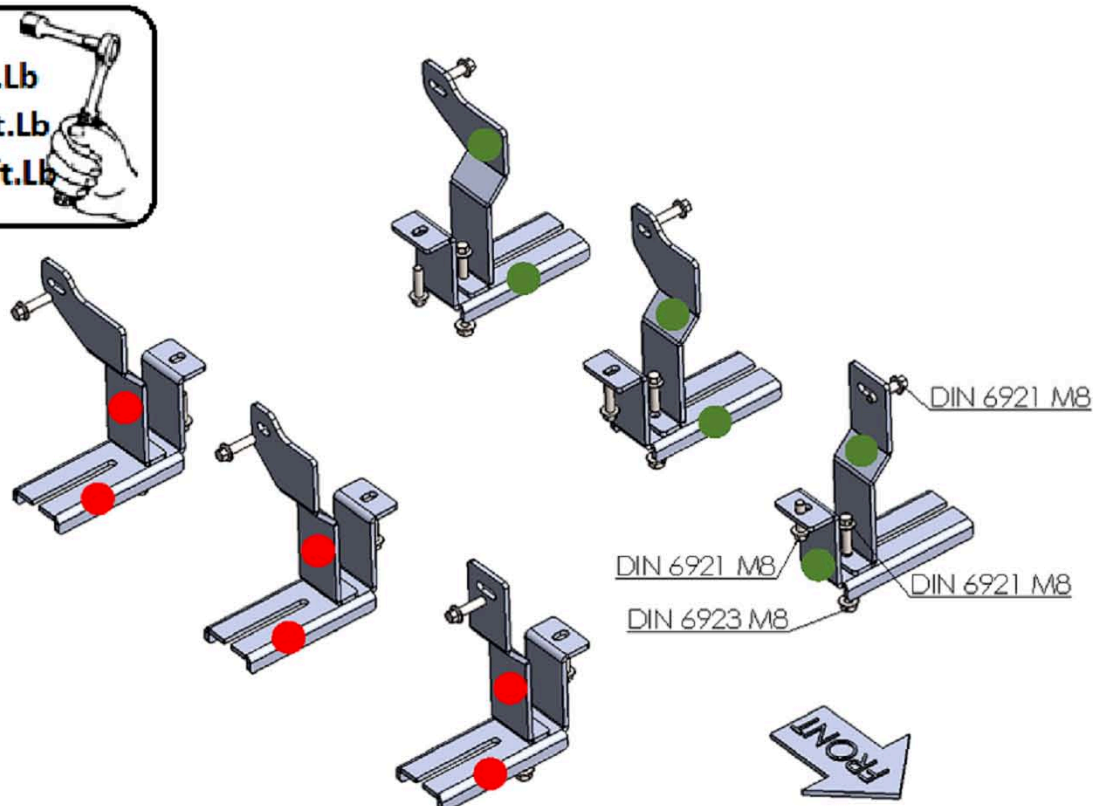
2814 Range Rover Sport 2005-2013

Installation Instructions





90 Minutes

M6 = 8 Ft.Lb
M8 = 18 Ft.Lb
M10 = 35 Ft.Lb

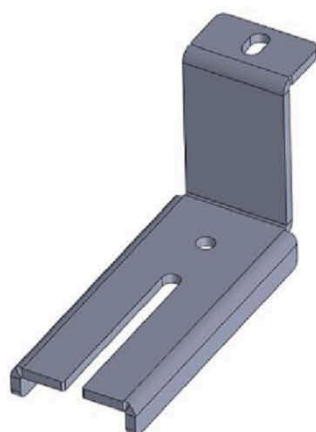


NOTE: This install requires plastic panel trimming

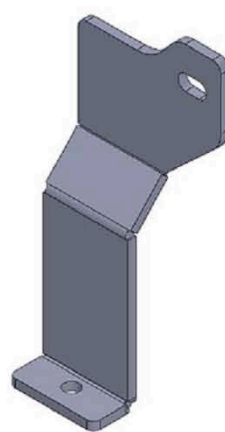
HARDWARE

| | | | | | |
|----|---|-------------------------------|---|---|---------------------------|
| 18 |  | FLANGE BOLT DIN 6923 M8x30 | 6 |  | FLANGE NUT DIN 6923 M8 |
|----|---|-------------------------------|---|---|---------------------------|

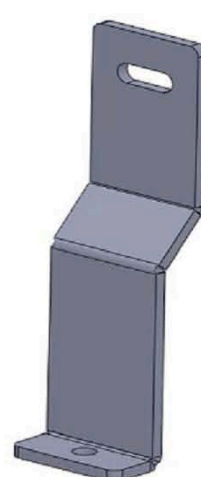
BRACKETS



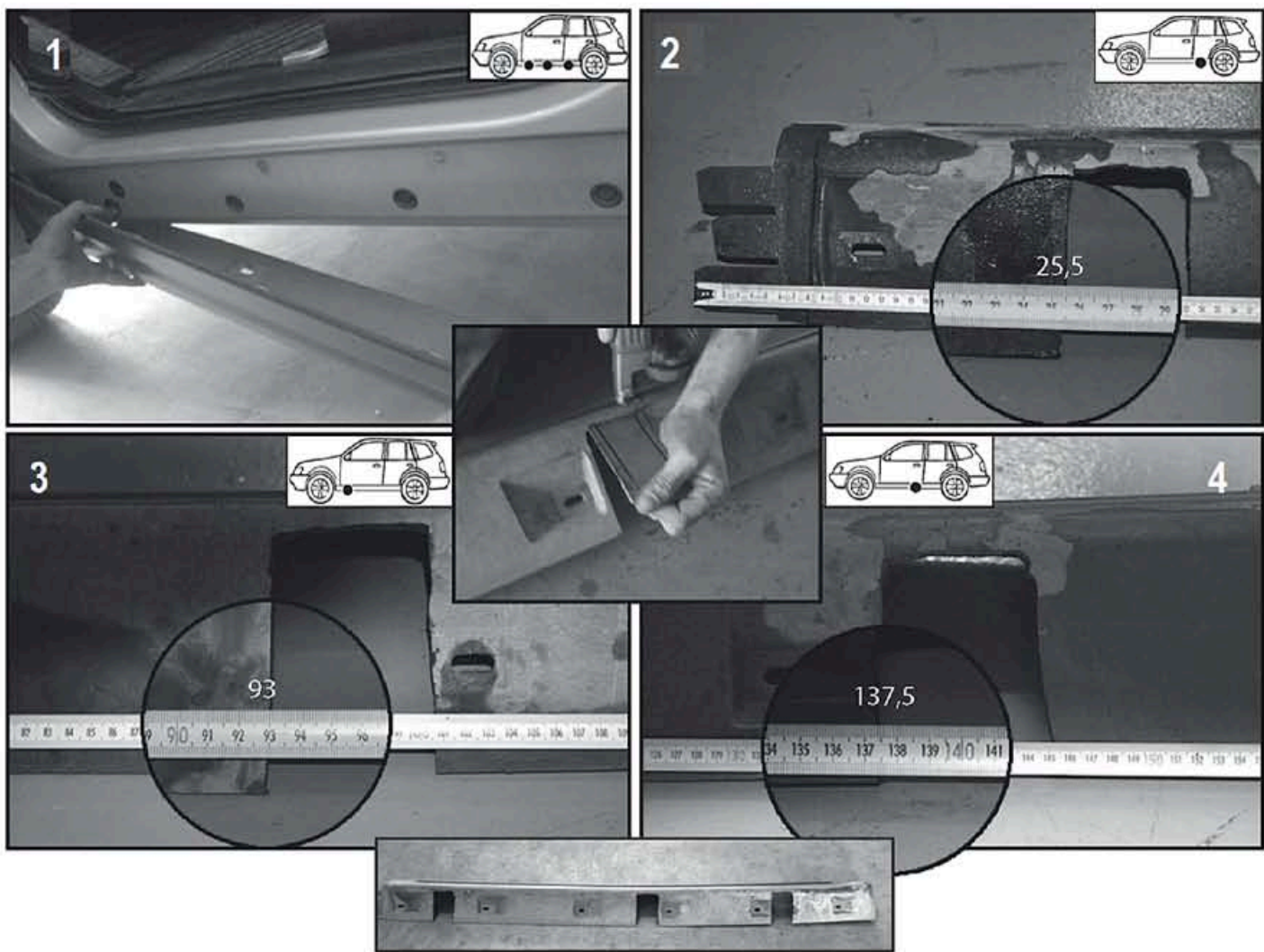
(x6)



(x4)



(x2)



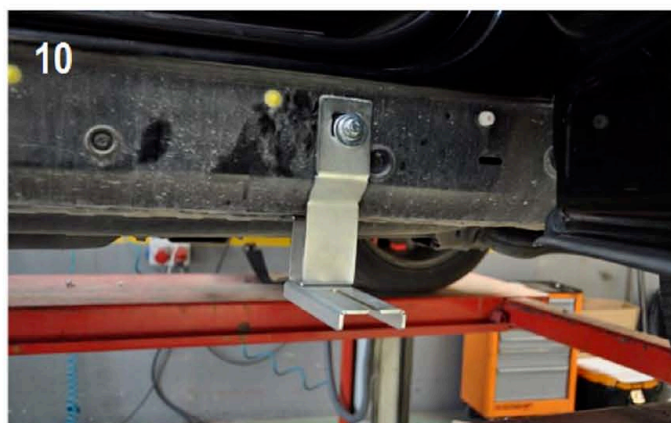
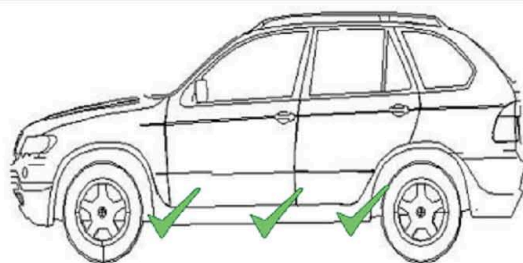
- 1) Remove plastic cladding from vehicle image #1, this will need to be modified in order to complete this installation
- 2) Starting from the rear cut a 3 inch square block at 10 inches image #2
- 3) Cut a 3 inch block at 36.5 inches for the front image #3
- 4) Cut a 3 inch block at 54 1/4 for the center image #4

NOTE: We strongly advice to install the brackets first, line up the plastic panel before making your first cut. Once the brackets have been installed you can definitely be sure that your cuts will be in the correct placing.

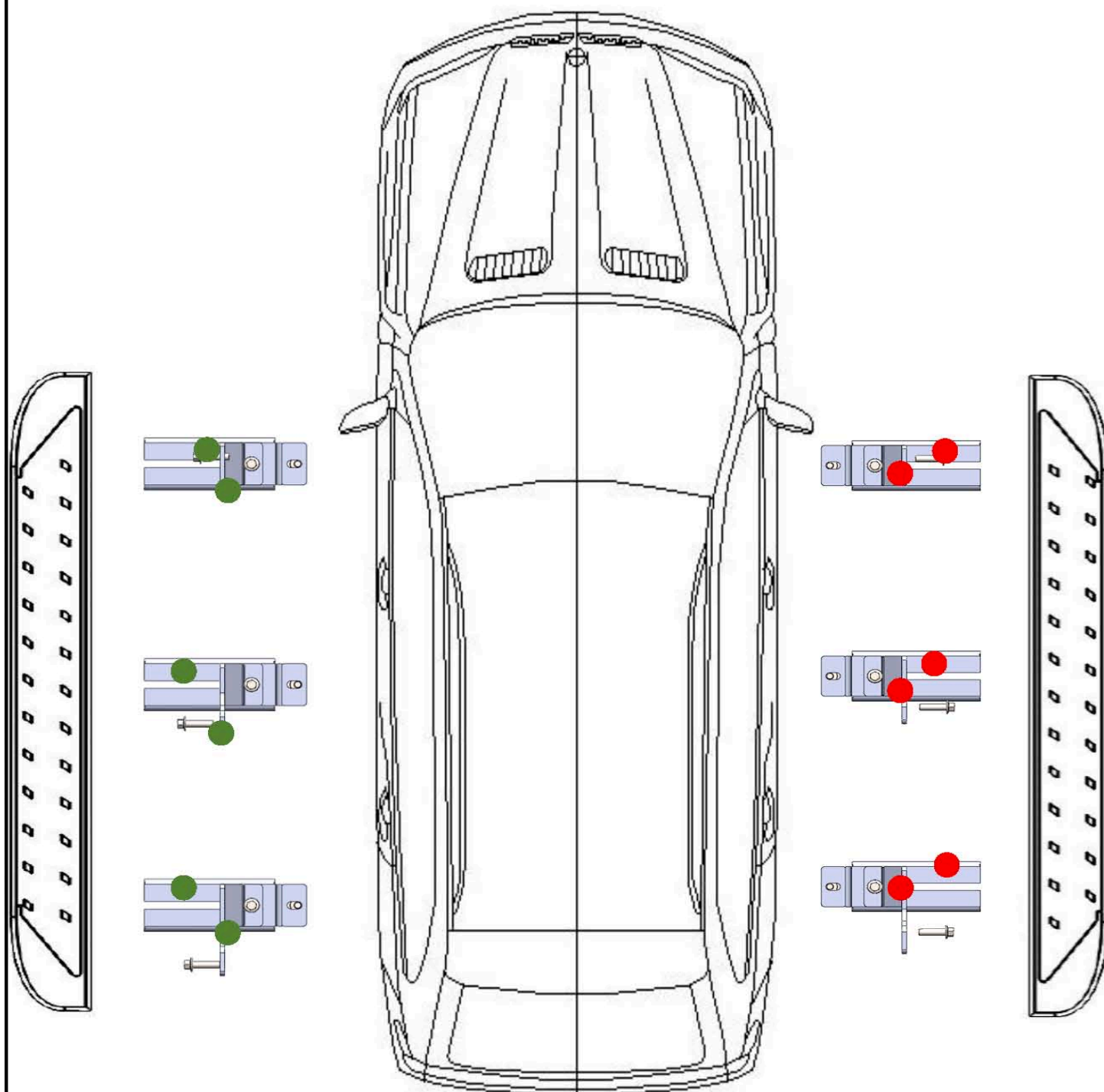
- 5) Proceed to install brackets onto vehicle as show on image #5 NOTE Factory mounting points are threaded to accept M8 hardware provided please see position diagram on page 2 for correct bracket placement do not tighten any of the brackets
- 6) Install extra support brackets as shown on images #9 and #10 please note that front extra support bracket is straight while the middle and rear extra support brackets are offset complete install with supplied M8 hardware do not tighten any of the brackets
- 7) Attach extra support brackets to main brackets with supplied M8 hardware do not tighten any of the brackets
- 8) You may now mock up the plastic panel and proceed to trim
- 9) Loosen M8 hardware on back of steps
- 10) Install steps onto brackets Hand tight only
- 11) Proceed to tighten bracket hardware M8 to 18 ft lbs
- 12) Remove steps from brackets
- 13) Install plastic panel back on vehicle
- 14) Proceed to install steps back on brackets and tighten M8 hardware to 18 ft lbs
- 15) Repeat procedure on opposite side.

For Technical support please call 1-866-717-6645

WARNING: Use of powertools will void the warranty



WARNING: Use of prowertools will void the warranty



ATTENTION PLEASE! : DO NOT TIGHTEN ALL OF THE SCREWS UNTIL ALL OF THE PARTS ARE INSTALLED.

NE PAZ SERRER L'ENSEMBLE QU'APRES TOUTES LES PHASES DU MONTAGE, ET UNE FOIS LES MARCHE PIEDS SONT CENTRES

NO DAR APRIETE AL CONJUNTO HASTA HABER FINALIZADO TODAS LAS FASES DE MONTAJE Y TENER CENTRADAS LAS

Keep your Romik accesories clean. To prevent corrsion and to maintain your high quality finish, wax or polish regulary with quality stainless polish. Use a non abrasive type automotive wax. Any use of abrasive soaps, polishes or waxes can be detrimental to the finish.

For additional installation assistance please call customer service 610-443-2122

ROMIK. 2714 Lehigh Street - Whitehall, PA 18052

www.romik.com