



Installation Instructions

Part No. **2820**

Product: Running Boards

Application: **Land Rover Discovery Sport**

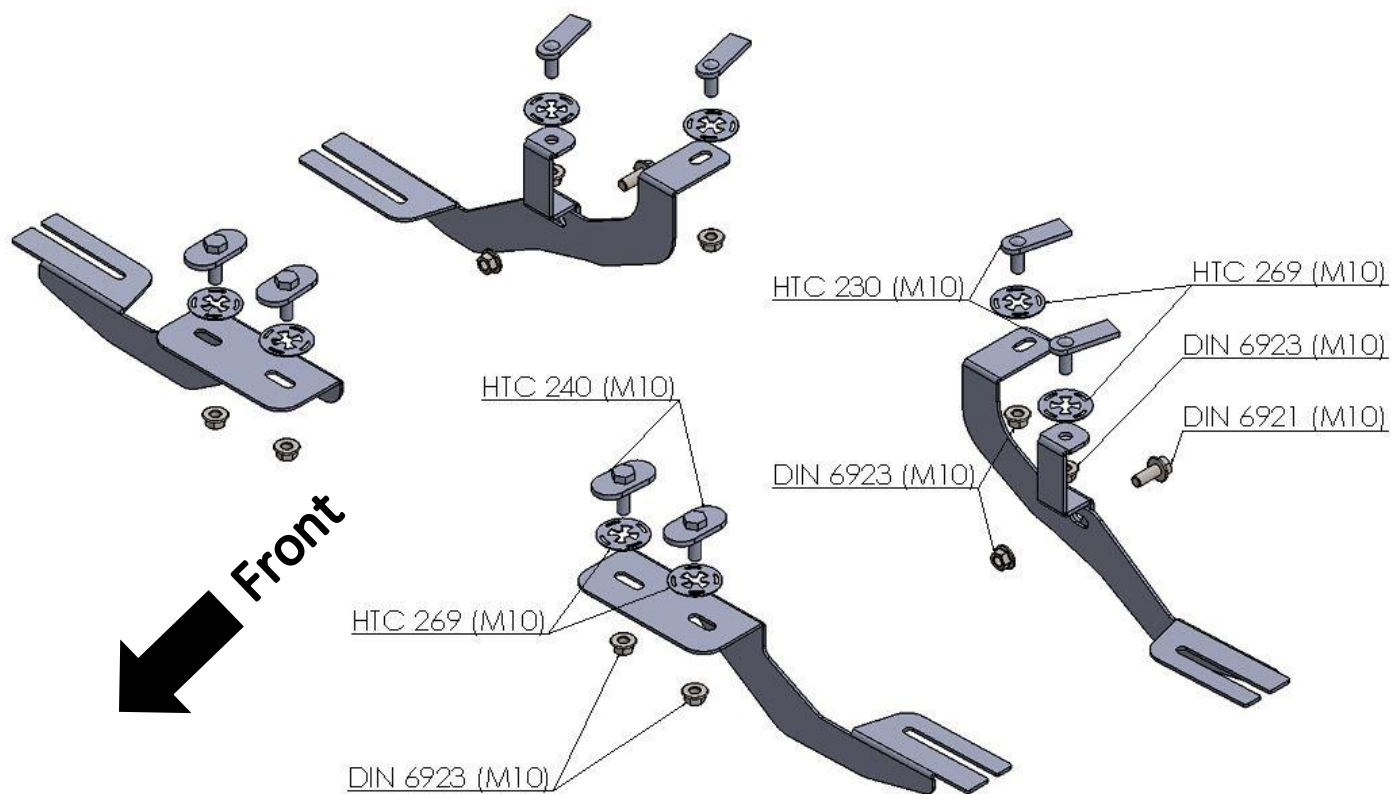
Level of Difficulty: 1 2 **3** 4 5

Installation Time: 120 Min

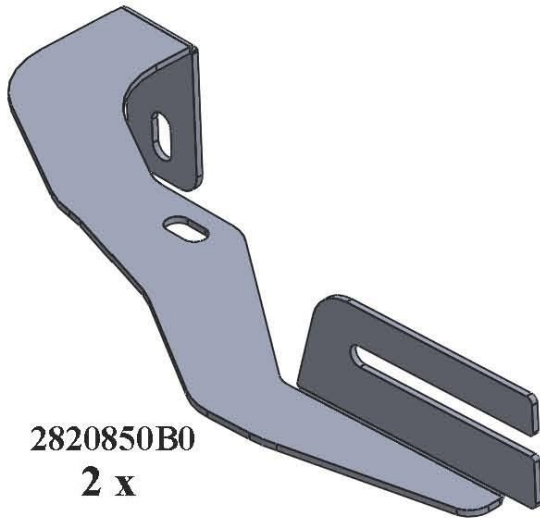
REV 2 05/01/22

Hardware	Torque Aluminum	Torque Steel to Steel
M6 Bolt	3 ft-lbs.	14 ft-lbs.
M8 Bolt	7 ft-lbs.	35 ft-lbs.
M10 Bolt	16 ft-lbs.	64 ft-lbs.
M12 Bolt	28 ft-lbs.	112 ft-lbs.

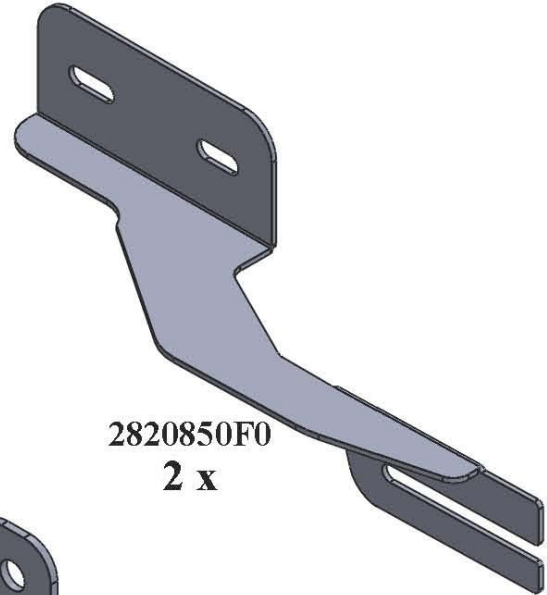
ATTENTION: Use correct torque settings to avoid damaging the running boards and or mounting brackets. Failure to do so will void your warranty. If you have any questions, please contact our technical team at 1-866-717-6645



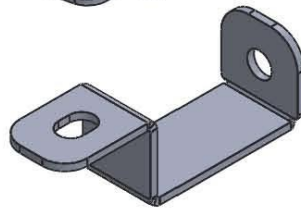
2820 - DISCOVERY SPORT 2014 - PRESENT



2820850B0
2 x

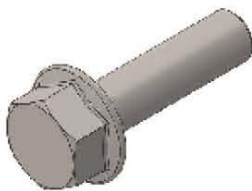


2820850F0
2 x

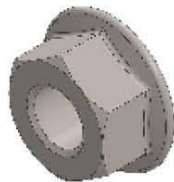


2820850B1
2 x

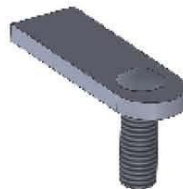
HARDWARE



DIN 6921 M10x25
2x



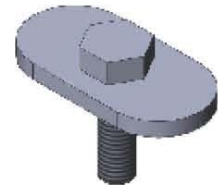
DIN 6923 M10
10x



HTC 230
M10x25(4x20x60)
4x



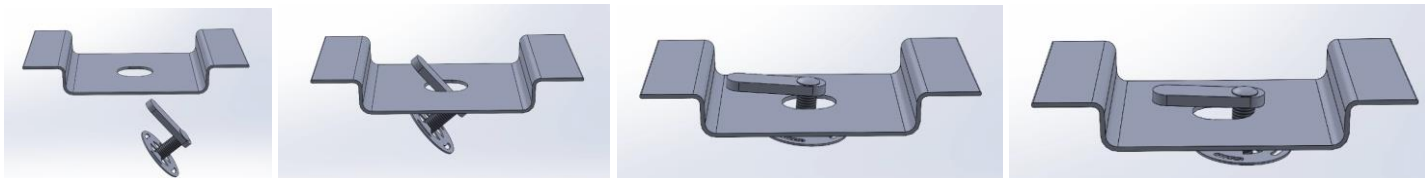
HTC 269 (M10)
8x



HTC 240 - M10X30
(5X34X60)
4x

Installation Instructions 2820 Bracket Kit

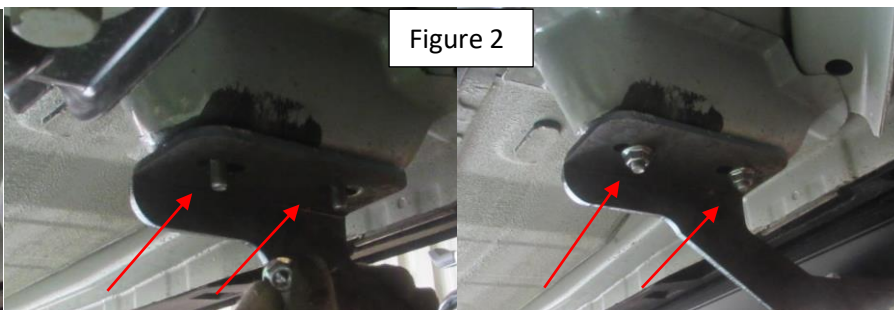
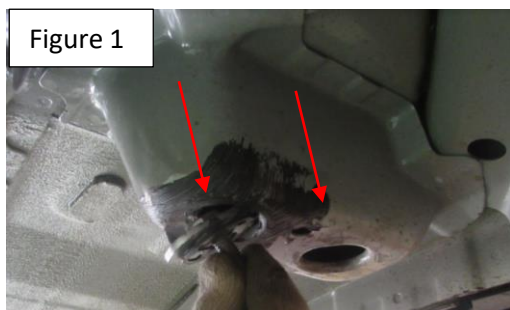
Important Install Tip: When installing Romik HTC inserts follow the sequence below. Make sure the HTC is seated correctly and do not use power tools as this will only spin the insert and possibly damage it. Test by tugging on it before installing bracket. Blue loctite is highly recommended on all metal parts.



Step 1: Remove bottom panels. Note Panels may differ due to differences in years and trim levels. We suggest removing panels and trimming them after bracket installation. **Do not discard hardware.**

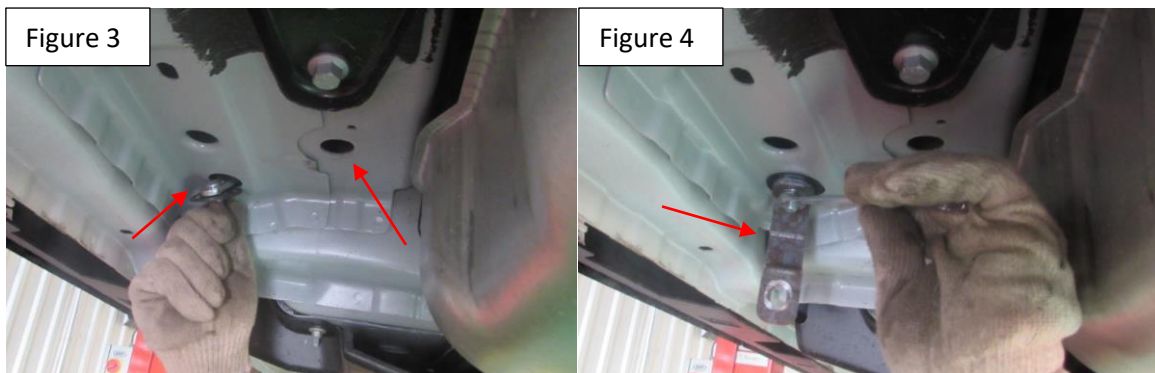


Step 2: Locate front bracket installation area Figure 1. Install provided HTC 240 with HTC 269 plastic retaining clips and proceed to attach front bracket Figure 2. Do not tighten

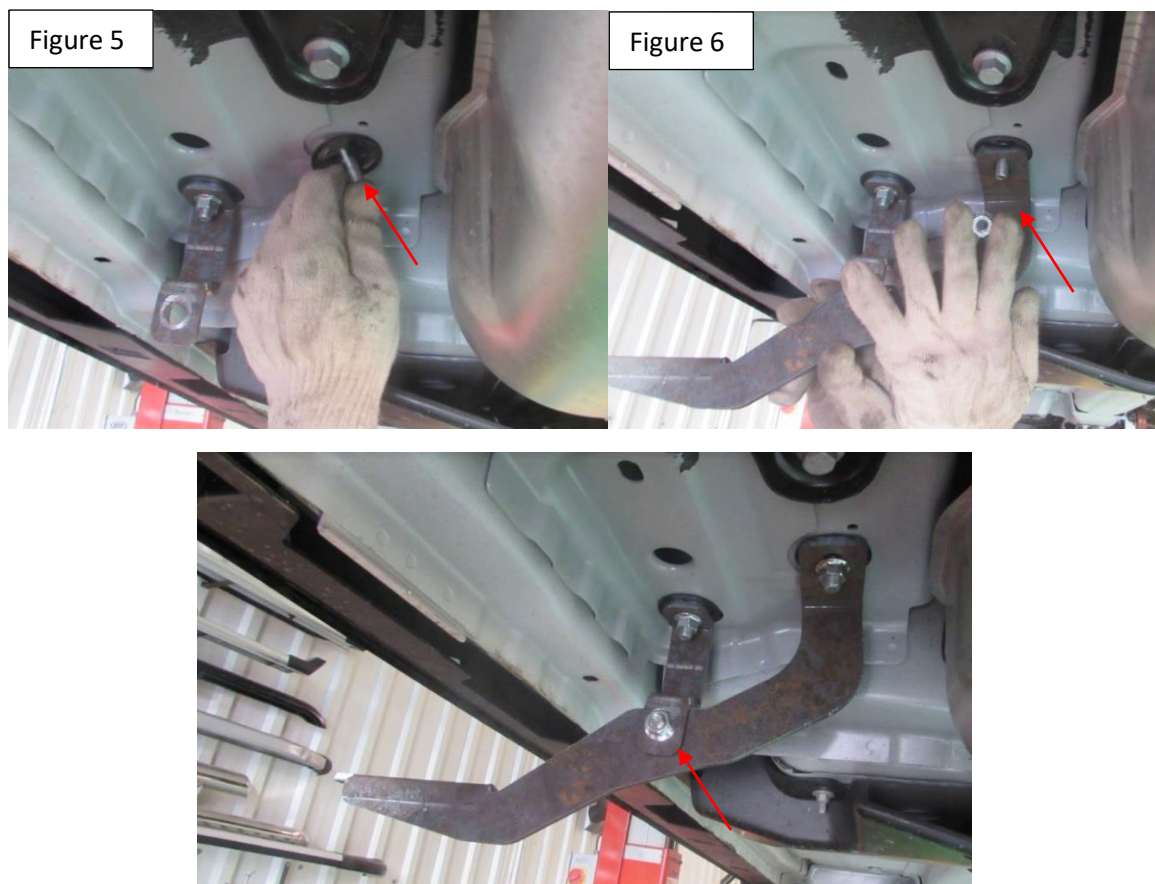


Installation Instructions 2820 Bracket Kit

Step 3: Locate rear bracket area, and install supplied HTC 230 with HTC269 as shown Figure 3. Install extra support bracket as shown Figure4. Do not tighten.



Step 4: Locate rear bracket area, and install supplied HTC 230 with HTC 269 as shown Figure 5. Install rear bracket as shown Figure 6. Do not tighten. Attach extra support and main rear bracket using supplied M10 hardware. Do not tighten



Step 5: Re-install factory panels and trim bracket area.

Step 6: Proceed to last page of this manual for running board install instructions and torque values

For Technical support please call our team at 1-866-717-6645 and one of our experts will assist you with this installation.

Thank you for choosing Romik.

Installation Instructions Running Boards

NOTE: Use of power tools will damage the bottom of the running board and void your warranty.

Step 1: loosen the M8 hardware on back of the running boards.

Step 2: Slide running board onto brackets

Step 3: Tighten hardware to 7 ft lbs.



ROF/RPD/ROB Running boards

Step 1: Place clamping plate on top of running board as shown below.

Step 2: Install carriage bolts and plastic retaining clips as shown below.

Step 3: Install and tighten hardware to 7 ft lbs.



Product Registration and Warranty Information

- Register your Romik products at <https://romik.com/productregistration>
- Warranty information at <http://www.romik.com/warranty>

Cleaning and maintaining your Romik Running boards

Cleaning and maintaining your running boards is important, apply a light coat of a quality carnauba wax at least 2X per year. Wash often with mild soap and make sure to remove all soap residue. Many car automatic carwashes use a strong soap, make sure to use enough water to remove all residue.

For video instructions on how to clean your Romik products please click here <https://romik.com/cleaning>