

# ROMIK

## Installation Instructions

REV 2 04/15/20

Part No. **2822**

Product: Running Boards

Application:

**Land Rover Velar 2017+**

**Jaguar F-Pace 2017+**

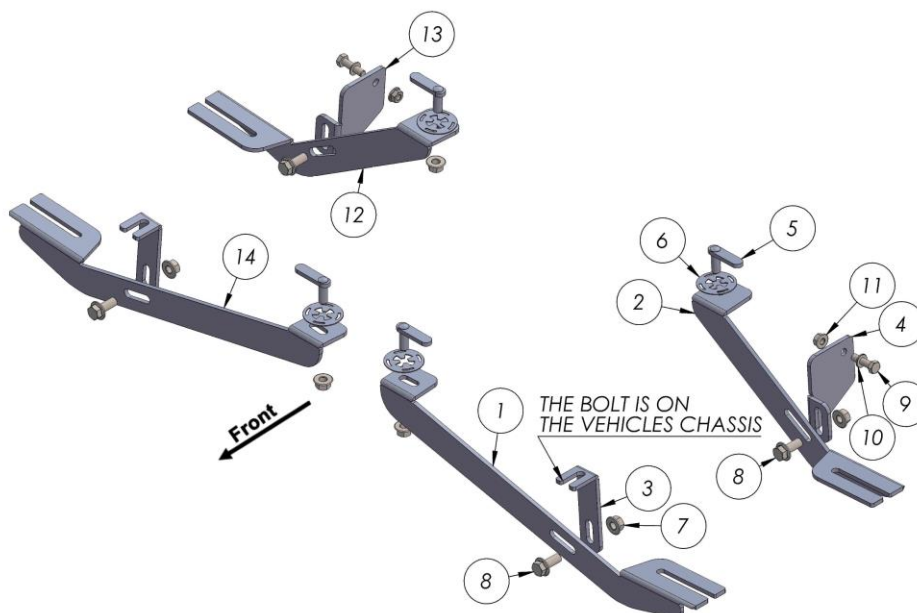
Level of Difficulty: 1 2 3 **4** 5

Installation Time: 120 Min

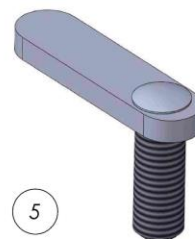
Hardware	Torque Specifications
M6 Bolt	3 ft-lbs.
M8 Bolt	7 ft-lbs.
M10 Bolt	16 ft-lbs.
M12 Bolt	28 ft-lbs.

**ATTENTION:** Use correct torque settings to avoid damaging the running boards and or mounting brackets. Failure to do so will void your warranty.

If you have any questions please contact our technical team at 1-866-717-6645



ITEM/NO	PART NAME	QTY
1	2822850F0 DRIVER	1
2	2822850B0 DRIVER	1
3	2822850F1 DRIVER	2
4	2822850B1 DRIVER	1
5	HTC 243 - M10x25(4x12x50)	4
6	HTC 269 - CLIPS (M10)	4
7	DIN 6923 FLANGE NUT - M10	8
8	DIN 6921 FLANGE BOLT - M10 x 25	4
9	DIN933 BOLT - M8 x 30	2
10	DIN 125 WASHER - M8	2
11	DIN 6923 FLANGE NUT - M8	2
12	2822850B0 PASSENGER	1
13	2822850B1 PASSENGER	1
14	2822850F0 PASSENGER	1



# Installation Instructions 2822 Bracket Kit

Video  
Installation  
Instruction:

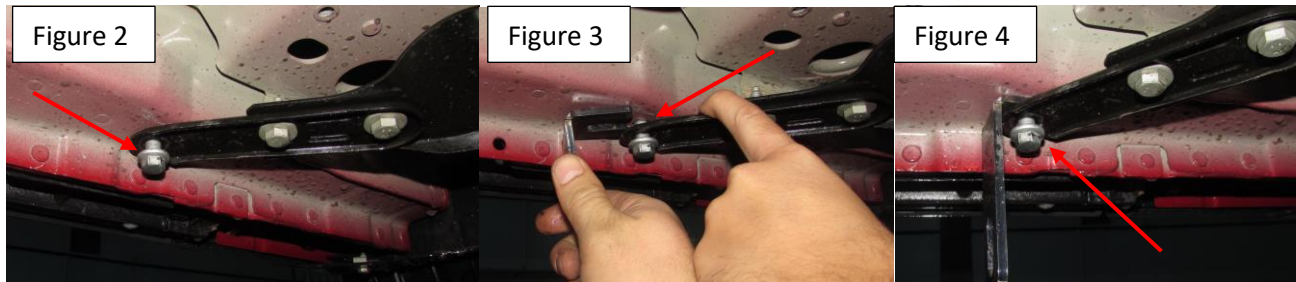
**NOTE:** This vehicle requires plastic undercarriage trimming.

**Step 1:** Remove plastic undercarriage tray, keep all hardware Figure 1



**Step 2:** Locate front mounting locations and hardware as per 1<sup>st</sup> page of this installation manual

**Step 3:** Loosen factory bolt as shown Figure 2, Insert extra support bracket Figure 3 and 4

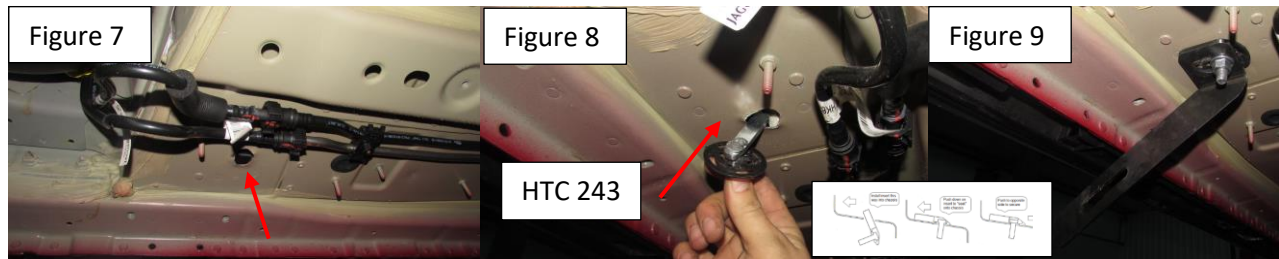


**Step 4:** Install provided HTC 243 as shown Figure 5, Install front main bracket and attach to extra support using supplied M10 hardware as shown on Figure 6. Do not tighten.

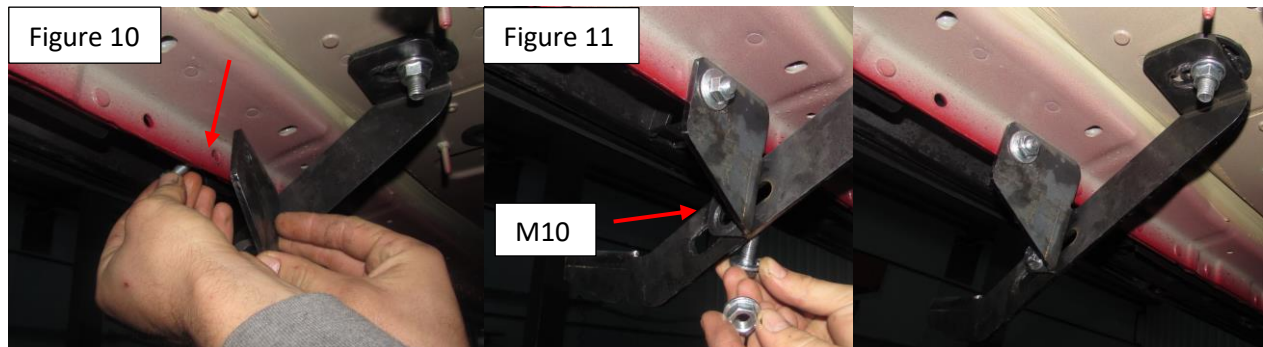


# Installation Instructions 2822 Bracket Kit

**Step 5:** Locate rear bracket mounting area, Figure 7. Install provided HTC 243 as shown Figure 8. Attach main bracket as shown Figure 9. Do not tighten

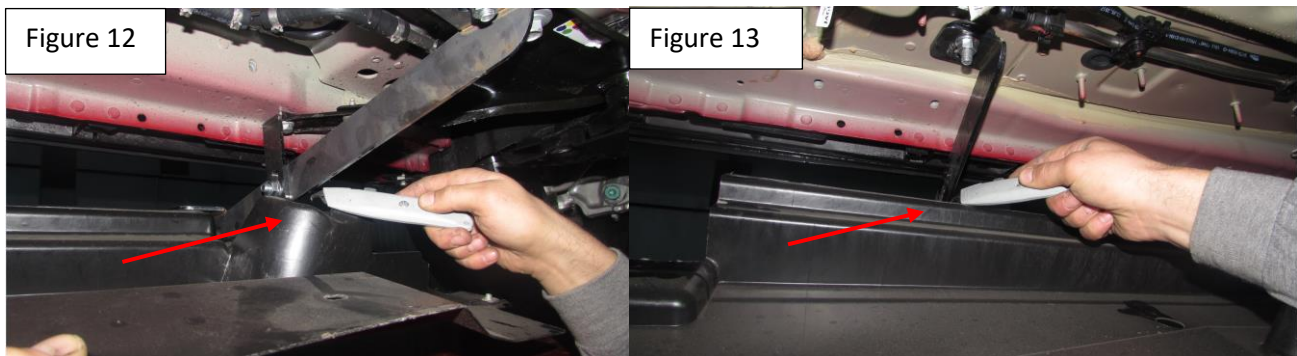


**Step 6:** Install extra support plate as shown on Figure 10. Attach extra support plate to rear main bracket Figure 11. Do not tighten



**Step 7:** Proceed to last page of this manual for running board install instructions and torque values

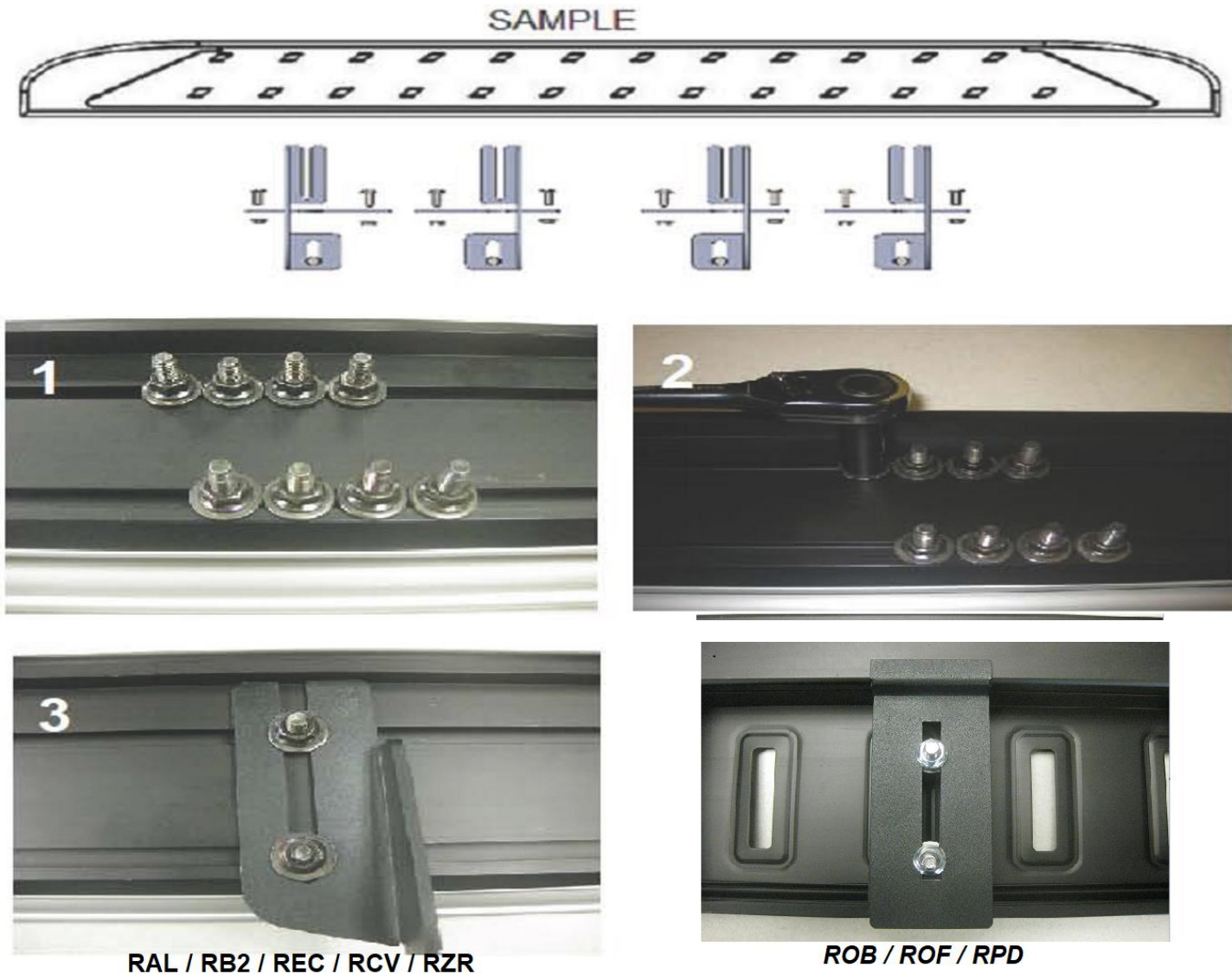
**Step 8:** Once the running boards are installed proceed to modify the plastic undercarriage panels as hown on Figure 12 and 13.



For Technical support please call our team at 1-866-717-6645 and one of our experts will assist you with this installation.

***Thank you for choosing Romik.***

# Running Board Installation Instructions



- 1) Flip your Romik running boards onto a flat surface, make sure to place the running boards on a towel or cardboard in order to protect the surface Figure 1.
- 2) Loosen the M8 bolts on back of your running boards Figure 2. Depending on your model there will be either 6 or 8 bolts installed per side.
- 3) Once your brackets have been installed, place the running board onto the brackets as shown on Figure 3.
- 4) Adjust running boards, centering on vehicle. Hand tight M8 hardware on running boards.
- 5) Follow the torque procedures, torque M8 hardware to **7 ft-lbs** using a torque wrench.
- 6) Cleaning and maintaining your running boards is important, apply a light coat of a quality carnauba wax at least 2X per year. Wash often with mild soap and make sure to remove all soap Residue. Many car automatic carwashes use a strong soap, make sure to use enough water to remove all residue.
- 7) Register your products at [www.Romik.com/contact/productregistration](http://www.Romik.com/contact/productregistration)
- 8) Warranty information at [www.Romik.com/warranty](http://www.Romik.com/warranty)