



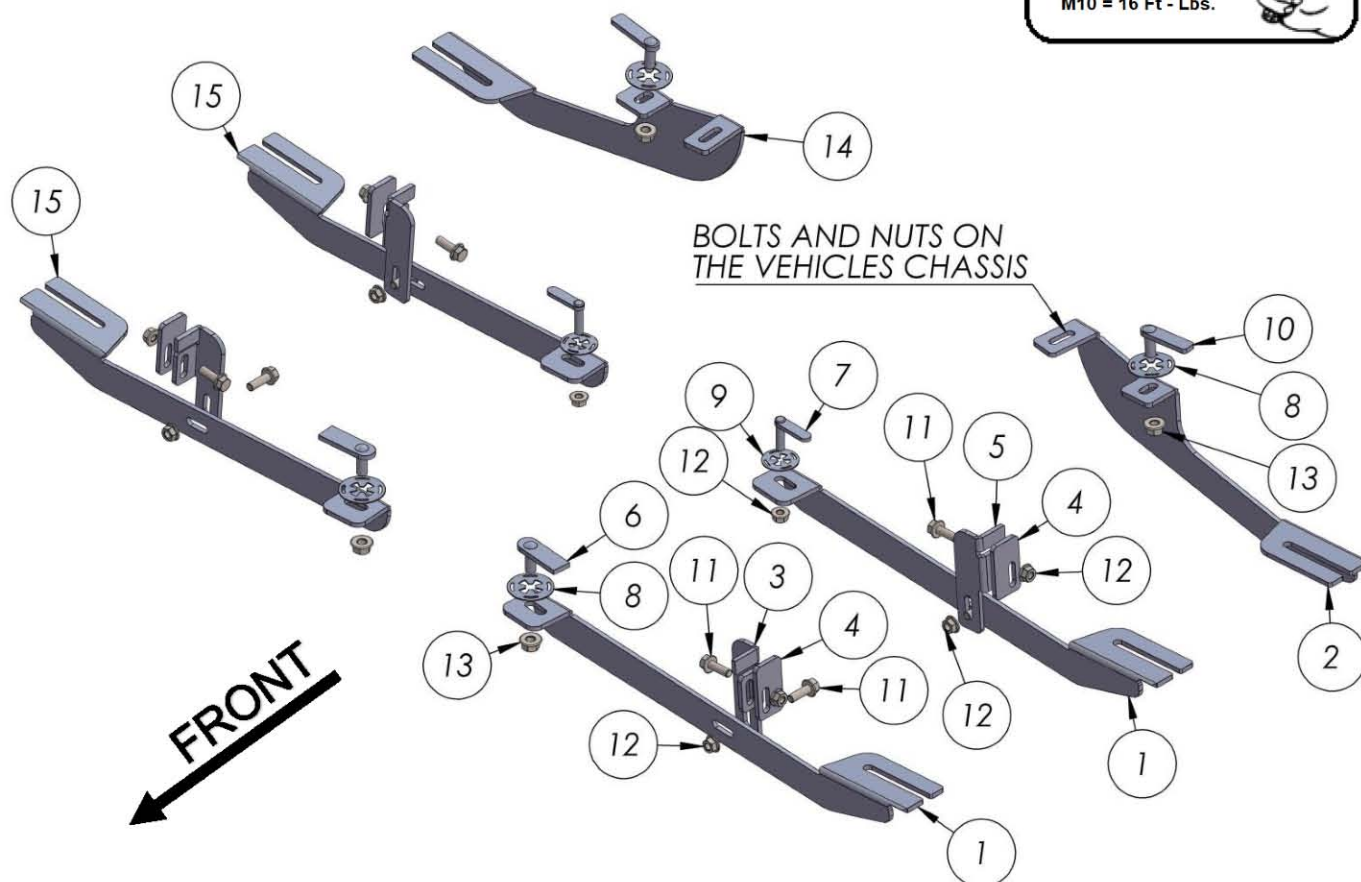
3129 – MITSUBISHI ECLIPSE CROSS 2018- PRESENT

Torque Specifications

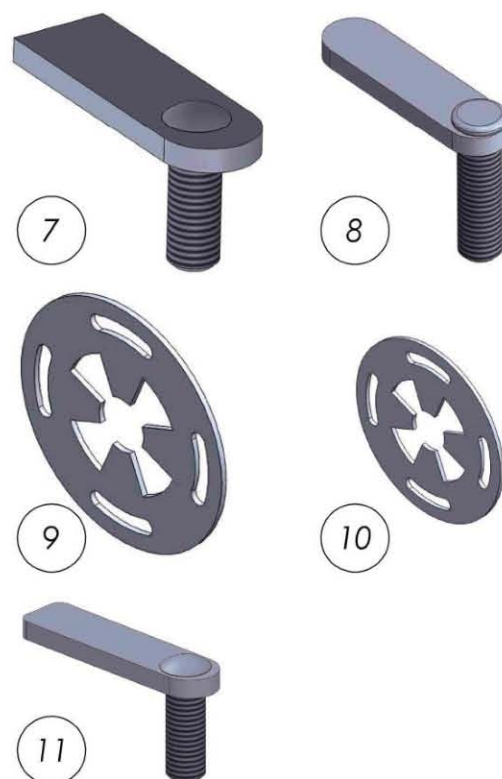
M6 = 3 ft - Lbs.

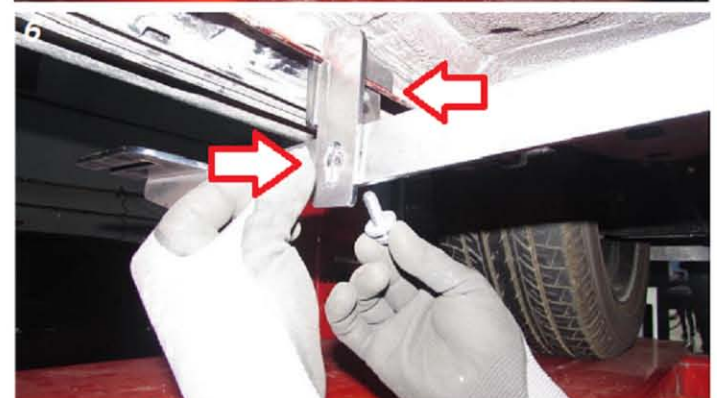
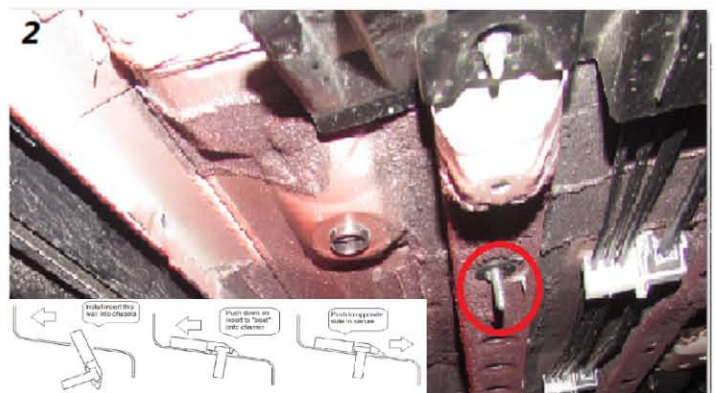
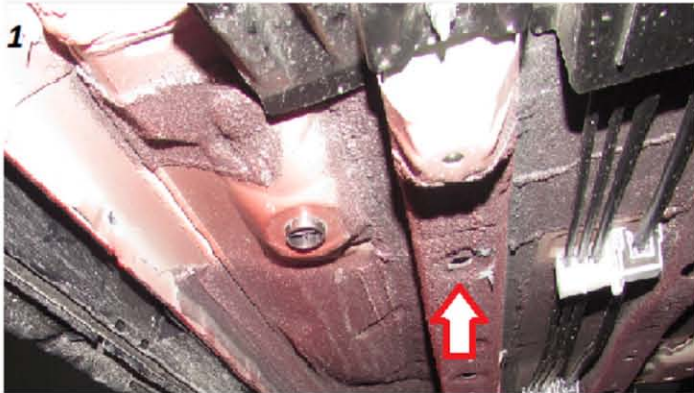
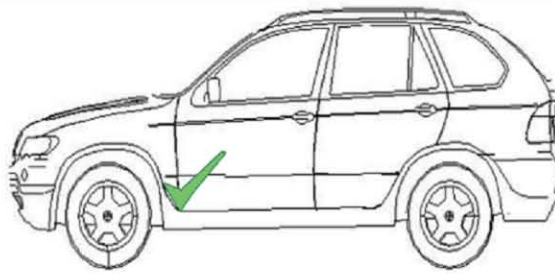
M8 = 7 Ft - Lbs.

M10 = 16 Ft - Lbs.



QTY	PART NAME	QTY
1	3129850FC0 DRIVER	2
2	3129850B0 DRIVER	1
3	3129850FC1	2
4	3129850FC2	4
5	3129850FC1-2	2
6	HTC 230 - M10x25	2
7	HTC 226 - M8X30 (4X10X37)	2
8	HTC 269 - CLIPS (M10)	4
9	HTC 271 - CLIPS (M8)	2
10	HTC 262 - M10X30 (5X15X60)	2
11	DIN 6921 - M8 x 25 x 25-N	8
12	DIN 6923 FLANGE NUT - M8	10
13	DIN 6923 FLANGE NUT - M10	4
14	3129850B0 PASSENGER	1
15	3129850FC0 PASSENGER	2





Customer support 866-717-4415

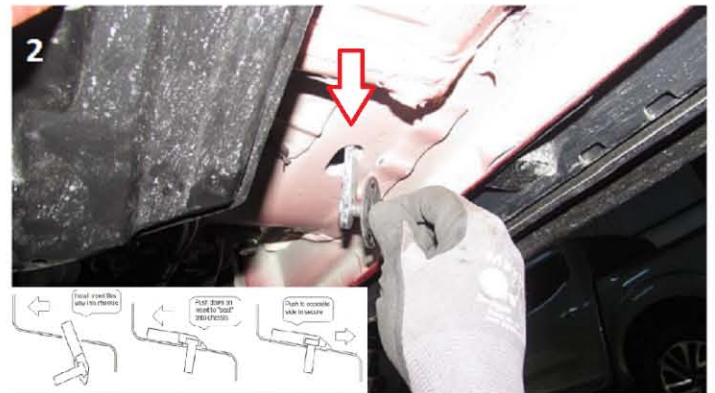
- 1) Locate from bracket mounting area as shown on image #1
- 2) Install HTC 230 with HTC 269 as shown on image #2
- 3) Attach main bracket with supplied M10 hardware image #3,4 make sure bracket is coming straight out to proceed
- 4) Attach extra support bracket, please note this vehicle has a curved pinch weld or body lip. The extra support bracket is made out of two pieces. The large portion of the extra support #3 (see page 2) must rest on the inside of the curved lip see image #5. Take item #4 and "sandwich" the vehicle's pinch weld between the two support brackets. Use M8 bolt and nut provided in the kit.
- 5) Attach the extra support bracket with the main bracket image #6 using supplied M8 hardware.
- 6) Make sure extra support bracket is seated correctly by pulling down on it. Take all slack before moving to the center bracket



- 1) Locate middle bracket mounting area as shown on image #1
- 2) Install provided HTC 226 with HTC 271 as shown on image #2
- 3) Install main bracket using provided M8 hardware as shown on image #3
- 4) Proceed to install extra support bracket #5 (see page 2) in the same fashion as the previous bracket. Please refer to page 3 for detail instructions.
- 5) Attach main support bracket to extra support bracket using supplied M8 hardware as shown on image #4
- 6) Make sure extra support is seated correctly by pulling down on it. Take all slack before moving to the rear bracket

For technical support please call 866-717-4415

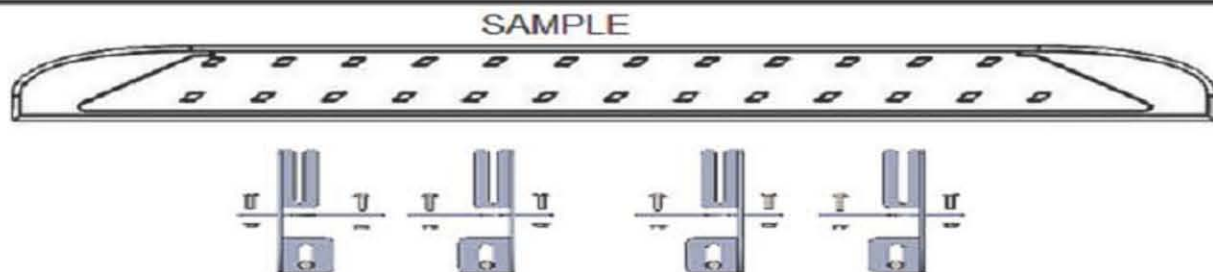
NOTE: Use of impact guns or similar will damage the hardware and running boards and will void your warranty



- 1) Locate rear bracket mounting area as shown on image #1 Note: Factory bolt directly behind large hole has to be removed and re-used
- 2) Install supplied HTC 262 with HTC 269 as shown on image #2 and #3 pull down on the insert to make sure it is seated correct
- 3) Attach rear main bracket using supplied M10 hardware as shown on image #4
- 4) Re-install original factory bolt as shown on image #5 hand tight only
- 5) Brackets are now installed you are ready to install running boards
- 6) Place running board on a soft surface to protect it from scratches, flip the board and loosen all the M8 hardware
- 7) Install running board onto brackets do not tighten
- 8) Adjust running boards left to right and fore and aft to desired position. Hand tighten running boards
- 9) Proceed to tighten brackets starting at the front, followed by the rear and finally the center bracket. This will ensure even pressure on vehicle as you tighten brackets. Torque M8 hardware to 7 ft lbs and M10 to 16 ft lbs DO NOT USE POWER TOOLS as this may damage the hardware.
- 10) Repeat install on opposite side
- 11) Proceed to next page for running board torque specs

For Technical support please call 866-717-4415 and don't forget to register your products at www.Romik.com

Running Board Torque Specs



- 1) Flip your Romik running boards onto a flat surface, make sure to place the running boards on a towel or cardboard in order to protect it image #1.
- 2) Loosen the 8MM bolts on back of your running boards image #2. Depending on your model there will be either 6 or 8 bolts installed per side.
- 3) Once your brackets have been installed, place the running board onto the brackets as shown on image #3 make sure it is snug.
- 4) Once adjusted to your liking, proceed to torque the mounting brackets.
- 5) Follow the torque procedures for aluminum running boards. Failure to do so will casue damages on the bottom of the running boards.
- 6) Torque your running boards to **7 ft lbs** using a torque wrench.
- 7) Cleaning and maintaining your running boards is important, apply a light coating of a quality carnauba wax at least 2x per year. Wash often with a mild soad and make sure to remove all soap residue. Note: Car washes use a strong soap make sure to use enough water to remove all soap residue.

NOTE: DO NOT OVERTIGHTEN as it may damage the bottom of the running boards

WARNING: USE OF POWERTOOLS WILL RESULT IN DAMAGE AND IT IS NOT COVERED UNDER WARRANTY.

For Technical Support please call 1-866-71-ROMIK

