



3130 – MITSUBISHI OUTLANDER PHEV

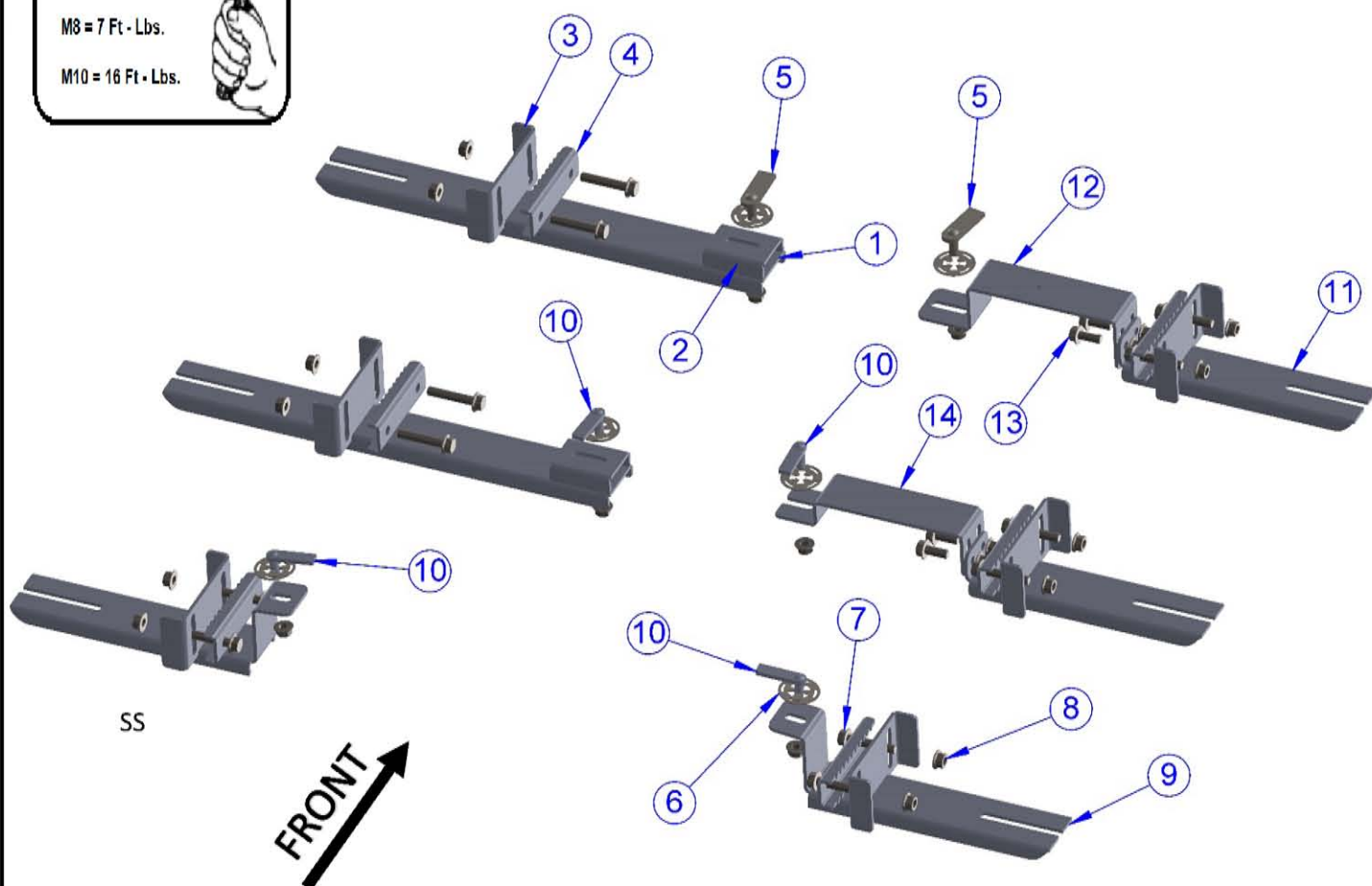
WARNING: Vehicle must be cool before install

Torque Specifications

M6 = 3 ft - Lbs.

M8 = 7 Ft - Lbs.

M10 = 16 Ft - Lbs.



SS

FRONT



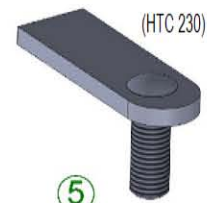
ITEM	PART NAME	QTY.
1	3130850FC0-D	2
2	3130850FC1-D	2
3	3130850FCB3	6
4	3130850FCB4	6
5	HTC 230 - M10x25(5x20x60)	2
6	HTC 269 - CLIPS (M10)	6
7	Hexagon Flange Bolt DIN 6921 - M10 x 55	12
8	Hexagon Flange Nut DIN 6923 - M10	22
9	3130850B0	2
10	HTC 244 - M10x25(4x14,5x55)	4
11	3130850FC0-P	2
12	3130850F2-P	1
13	Hexagon Flange Bolt DIN 6921 - M10 x 25	4
14	3130850C2-P	1



10



6



5

Torque Specifications

M6 = 3 ft - Lbs.

M8 = 7 Ft - Lbs.

M10 = 16 Ft - Lbs.



Driver Side Front Brackets



- 1) Locate front driver's side bracket #3 & #4
- 2) Locate mounting hole as shown in image #1
- 3) Install HTC 230 (5x20x60) threaded insert along with HTC 269 retaining clip as shown on image #2, #3
- 4) Attach front driver's side bracket #3 with supplied M10 hardware as shown on image #4 & #5 do not tighten
- 5) Attach bracket #4 to bracket #3 using supplied M10 hardware as shown on image #6
- 6) Lift bracket #3 upwards so that bracket #4 passes the vehicles pinch weld
- 7) Secure bracket #4 tighten until bracket holds vehicles pinch weld, do not fully tighten
- 8) Proceed to driver's side middle brackets

Torque Specifications

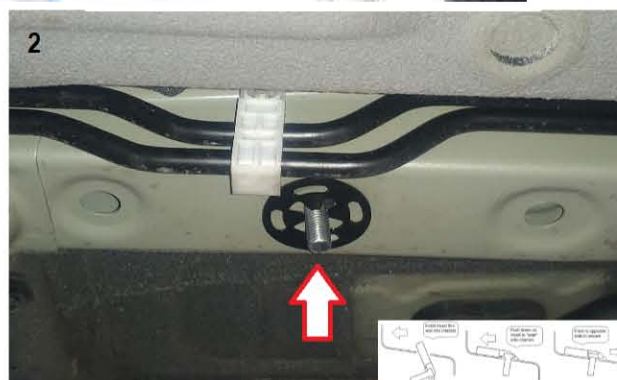
M6 = 3 ft - Lbs.

M8 = 7 Ft - Lbs.

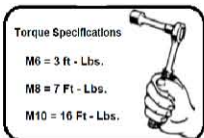
M10 = 16 Ft - Lbs.



Driver Side Middle Brackets



- 1) Locate driver's side middle bracket #3 & #4
- 2) Locate mounting hole as shown in image #1
- 3) Install HTC 244 (4x14.5x55) threaded insert along with HTC 269 retaining clips as shown on image #2
- 4) Attach driver's middle bracket #3 with supplied M10 hardware as shown on image #4 & #5 do not tighten
- 5) Attach bracket #4 to bracket #3 using supplied M10 hardware as shown on image #7
- 6) Lift bracket #3 upwards so that bracket #4 passes the vehicles pinch weld
- 7) Secure bracket #4 tighten until bracket holds vehicles pinch weld, do not fully tighten
- 8) Proceed to driver's rear brackets



Driver-Passenger Side Rear Brackets



- 1) locate driver's side rear bracket #9 & #4
- 2) Locate mounting hole as shown on image #1
- 3) Install HTC 244 (4x14.5x55) threaded insert along with HTC 269 retaining clip as shown on image #2, #3
- 4) Attach rear driver's side bracket #9 with supplied M10 hardware as shown on image #4 do not tighten
- 5) Attach bracket #4 to bracket #9 using supplied M10 hardware as shown on image #5
- 6) Lift bracket #9 upwards so that bracket #4 passes vehicles pinch weld
- 7) Secure bracket #4 tighten until bracket holds vehicles pinch weld, do not fully tighten
- 8) Loosen M8 hardware on back of running boards and install onto running boards hand tight only
- 9) Proceed to tighten brackets starting in the front followed by the rear and finishing in the middle. Torque to specs
- 10) Proceed to tighten running boards as per torque specs on page 9
- 11) Proceed to passenger side



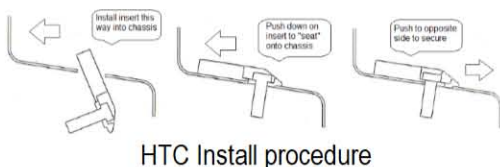
HTC Install procedures

Passenger Side Front Brackets

WARNING: Do not attempt to do this step with a hot vehicle. Allow vehicle to cool down before installing passenger side



- 1) Locate front passenger side brackets #11, #12, #4
- 2) Locate mounting hole as shown on image #1
- 3) Install HTC 230 (5x20x60) threaded insert along with HTC 269 retaining clip as shown on image #2, #3.
- 4) Install bracket #12 going over the exhaust pipe (to avoid severe injuries make sure the vehicle has been turned off for several minutes to allow exhaust to cool down. DO NOT attempt to install with a hot exhaust) and attach to HTC 230, do not tighten.
- 5) Pre-assemble bracket #11 and #4 using supplied hardware as shown on image #5
- 6) Install assembled bracket onto vehicle pushing upwards to catch vehicle's pinch weld.
- 7) Attach bracket #11 to bracket #12 using supplied M10 hardware. Snug but do not tighten all the way. Repeat with remaining hardware.
- 8) Proceed to middle bracket.




HTC Install procedure

Torque Specifications

M6 = 3 ft - Lbs.

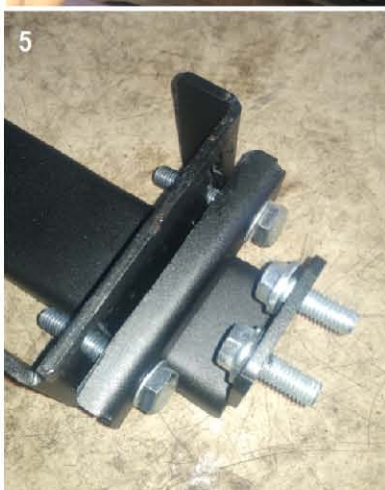
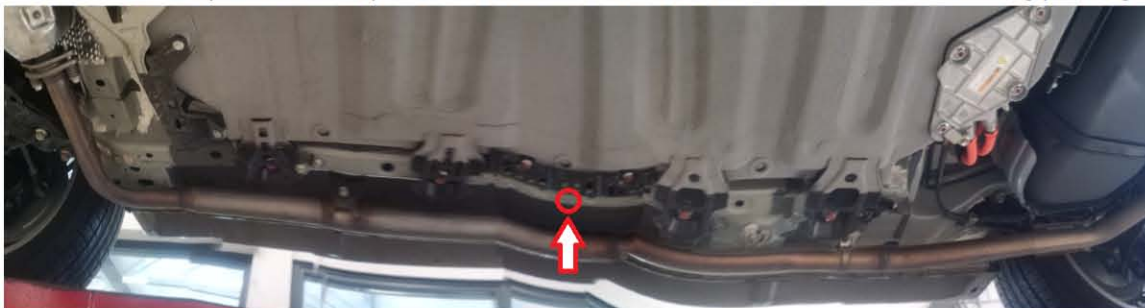
M8 = 7 Ft - Lbs.

M10 = 16 Ft - Lbs.

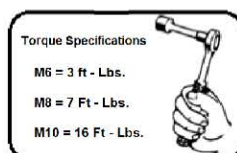
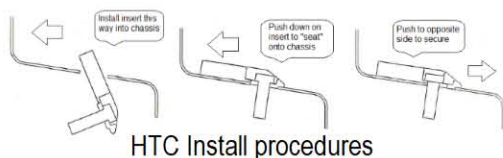


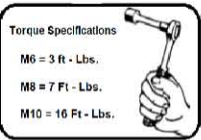
Passenger Side Middle Brackets

WARNING: Do not attempt to do this step with a hot vehicle. Allow vehicle to cool down before installing passenger side



- 1) Locate middle passenger brackets #11, #12, #4
- 2) Locate mounting hole as shown on image #1
- 3) Install HTC 244 (4 x 14.5 x 55) threaded insert along with HTC 269 retaining clip as shown on image #2, #3
- 4) Install bracket #12 going over the exhaust pipe (to avoid severe injuries make sure the vehicle has been turned off for several minutes to allow exhaust to cool down. DO NOT attempt to install with a hot exhaust) and attach to HTC 244. Do not tighten
- 5) Pre-Assemble bracket #11 and #4 using supplied hardware as shown on image #5
- 6) Install assembled bracket onto vehicle pushing upwards to catch vehicles pinch weld.
- 7) Attach bracket #11 to bracket #12 using supplied M10 hardware. Snug but do not tighten all the way. Repeat with remaining hardware.
- 8) Proceed to rear bracket.





Driver-Passenger Side Rear Brackets

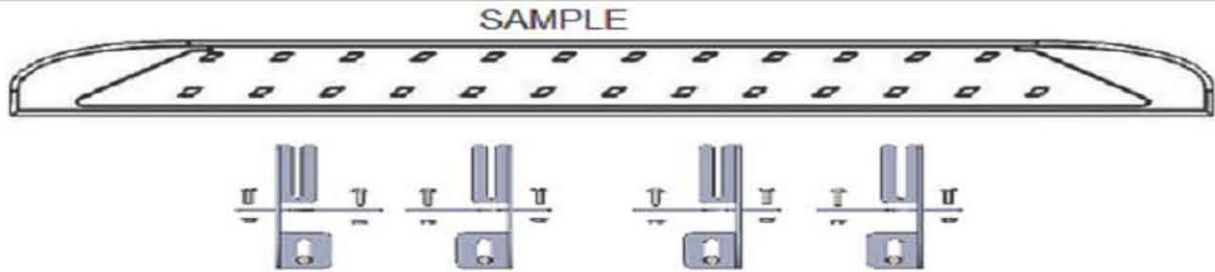


- 1) locate driver's side rear bracket #9 & #4
- 2) Locate mounting hole as shown on image #1
- 3) Install HTC 244 (4x14.5x55) threaded insert along with HTC 269 retaining clip as shown on image #2, #3
- 4) Attach rear driver's side bracket #9 with supplied M10 hardware as shown on image #4 do not tighten
- 5) Attach bracket #4 to bracket #9 using supplied M10 hardware as shown on image #5
- 6) Lift bracket #9 upwards so that bracket #4 passes vehicles pinch weld
- 7) Secure bracket #4 tighten until bracket holds vehicles pinch weld, do not fully tighten
- 8) Loosen M8 hardware on back of running boards and install onto running boards hand tight only
- 9) Proceed to tighten brackets starting in the front followed by the rear and finishing in the middle. Torque to specs
- 10) Proceed to tighten running boards as per torque specs on page 9



HTC Install procedures

Running Board Torque Specs



RAL / RB2 / REC / RCV / RZR



ROF / ROB

- 1) Flip your Romik running boards onto a flat surface, make sure to place the running boards on a towel or cardboard in order to protect it image #1.
- 2) Loosen the 8MM bolts on back of your running boards image #2. Depending on your model there will be either 6 or 8 bolts installed per side.
- 3) Once your brackets have been installed, place the running board onto the brackets as shown on image #3 make sure it is snug.
- 4) Once adjusted to your liking, proceed to torque the mounting brackets.
- 5) Follow the torque procedures for aluminum running boards. Failure to do so will casue damages on the bottom of the running boards.
- 6) Torque your running boards to **7 ft lbs** using a torque wrench.
- 7) Cleaning and maintaining your running boards is important, apply a light coating of a quality carnauba wax at least 2x per year. Wash often with a mild soad and make sure to remove all soap residue. Note: Car washes use a strong soap make sure to use enough water to remove all soap residue.

NOTE: DO NOT OVERTIGHTEN as it may damage the bottom of the running boards

WARNING: USE OF POWERTOOLS WILL RESULT IN DAMAGE AND IT IS NOT COVERED UNDER WARRANTY.

For Technical Support please call 1-866-71-ROMIK

