



Installation Instructions

REV 5 07/15/21

Part No. **3227 / 3233**

Product: Running Boards

Application:

Nissan Rogue 2014 - 2020

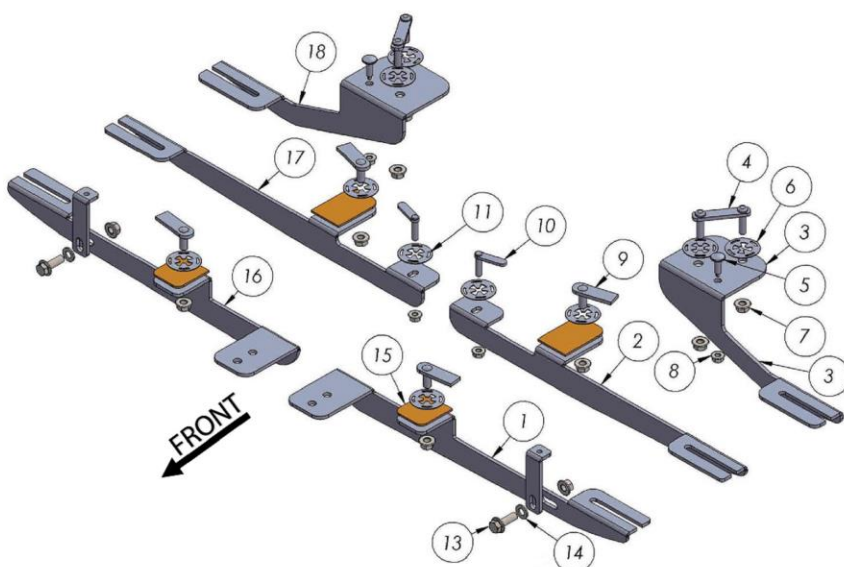
Level of Difficulty: 1 2 **3** 4 5

Installation Time: 90 min

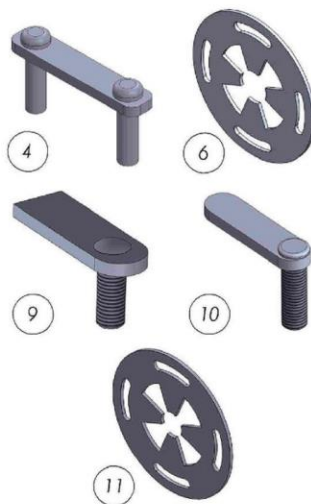
Hardware	Torque Specifications
M6 Bolt	3 ft-lbs.
M8 Bolt	7 ft-lbs.
M10 Bolt	16 ft-lbs.
M12 Bolt	28 ft-lbs.

ATTENTION: Use correct torque settings to avoid damaging the running boards and or mounting brackets. Failure to do so will void your warranty.

If you have any questions please contact our technical team at 1-866-717-6645



ITEM/NO	PART NUMBER	QTY
1	3227751F0 DRIVER	1
2	3227751C0 DRIVER	1
3	3227751B0 DRIVER	1
4	HTC 302 - M10 x 35 (5 X 15 X 75)	2
5	OV BOLT M8	2
6	HTC 269 - CLIPS (M10)	8
7	DIN 6923 FLANGE NUT - M10	10
8	DIN 6923 FLANGE NUT - M8	4
9	HTC 230 - M10x25(5x20x60)	4
10	HTC 226 - M8X30 (4X10X37)	2
11	HTC 271 - CLIPS (M8)	2
12	3227751F1	2
13	DIN 6921 FLANGE BOLT - M10 x 30	2
14	DIN 125 WASHER - M10	2
15	SPONGE	4
16	3227751F0 PASSENGER	1
17	3227751C0 PASSENGER	1
18	3227751B0 PASSENGER	1



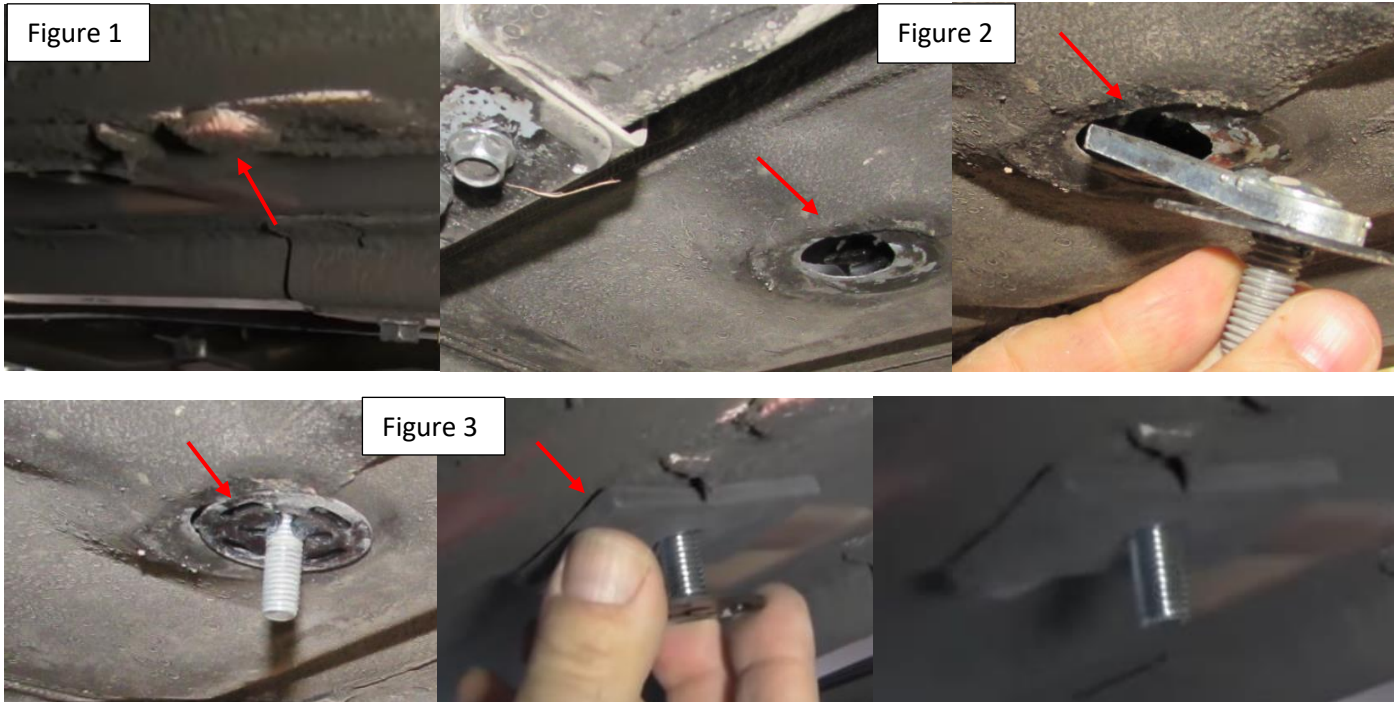
Installation Instructions 3227/3233 Bracket Kit

Video

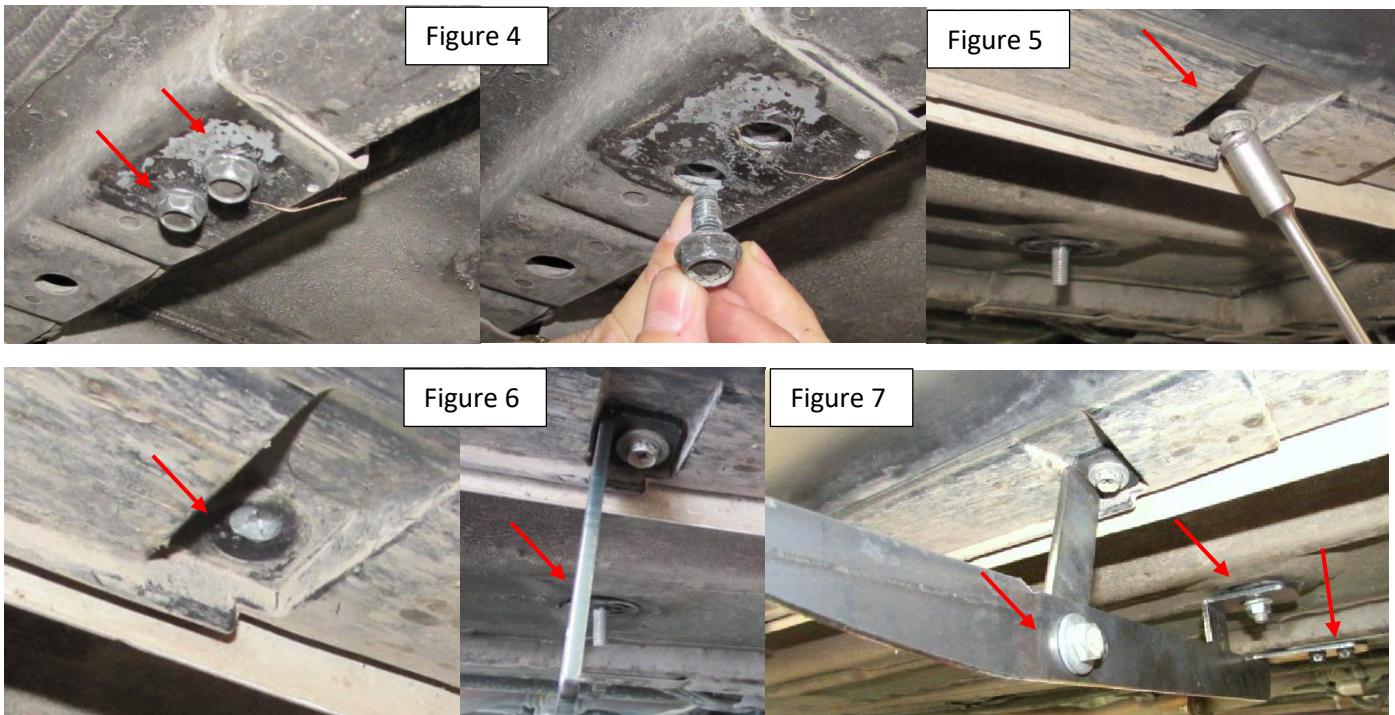


Step 1: Locate front mounting locations and hardware as per 1st page of this installation manual

Step 2: Remove factory rubber plug Figure 1 and install provided HTC 230 as shown Figure 2. Install provided foam pad as shown Figure 3.

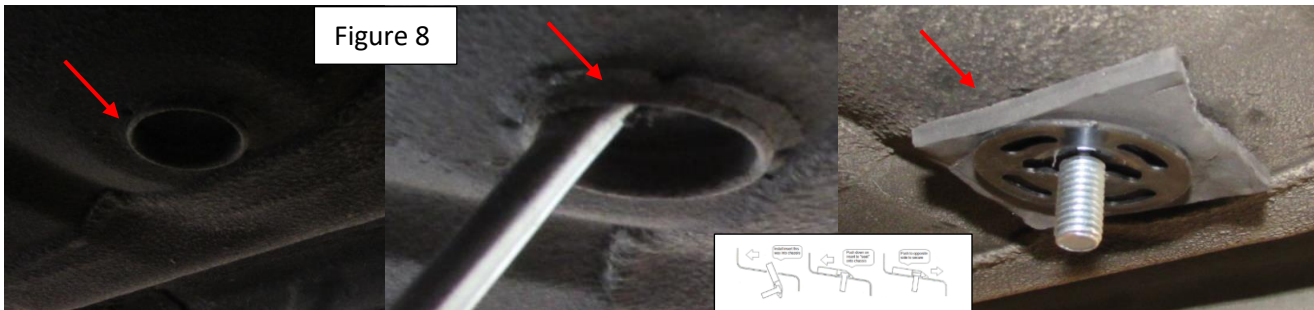


Step 3: Remove factory bolts as shown Figure 4 Do not discard as they will be re-used. Locate extra support bracket mounting area and remove factory bolt Figure 5 and install extra support Figure 6. Proceed to install main front bracket as shown Figure 7 Do not tighten.

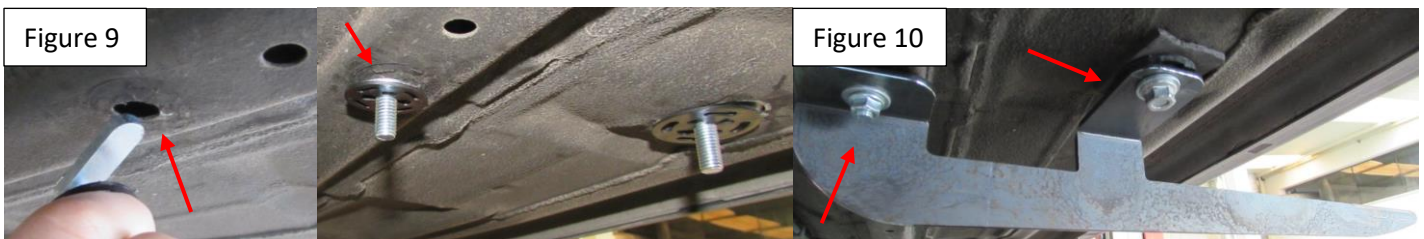


Installation Instructions 3227/3233 Bracket Kit

Step 4: Locate middle bracket location and remove factory rubber plug. Install provided HTC 230 and foam pad as shown Figure 8



Step 5: Install provided HTC 226 as shown on Figure 9. Proceed to install middle bracket as shown Figure 10. Do not tighten



Step 6: Locate rear mounting area. Using the supplied wire and special bolt #5 OV Bolt M8 pass the bolt through the oval hole into the smaller hole Figure 11. Add HTC 271 Klips to retain the bolt. Next pass the u clamp bolt Figure 12 and add HTC 269 clips to retain. Install rear bracket do not tighten.



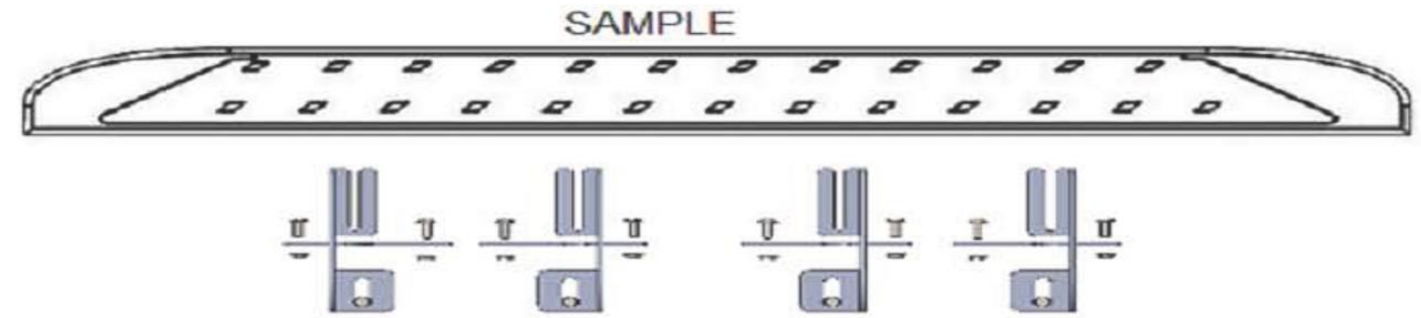
Installation Instructions 3227/3233 Bracket Kit

Step 8: Proceed to last page of this manual for running board install instructions and torque values.

For Technical support please call our team at 1-866-717-6645 and one of our experts will assist you with this installation.

Thank you for choosing Romik.

Running Board Installation Instructions



RAL / RB2 / REC / RCV / RZR



ROB / ROF / RPD

- 1) Flip your Romik running boards onto a flat surface, make sure to place the running boards on a towel or cardboard in order to protect the surface Figure 1.
- 2) Loosen the M8 bolts on back of your running boards Figure 2. Depending on your model there will be either 6 or 8 bolts installed per side.
- 3) Once your brackets have been installed, place the running board onto the brackets as shown on Figure 3.
- 4) Adjust running boards, centering on vehicle. Hand tight M8 hardware on running boards.
- 5) Follow the torque procedures, torque M8 hardware to **7 ft-lbs** using a torque wrench.
- 6) Cleaning and maintaining your running boards is important, apply a light coat of a quality carnauba wax at least 2X per year. Wash often with mild soap and make sure to remove all soap residue. Many car automatic carwashes use a strong soap, make sure to use enough water to remove all residue.
- 7) Register your products at www.Romik.com/contact/productregistration
- 8) Warranty information at www.Romik.com/warranty