



Installation Instructions

Part No. **3240**

Product: Running Boards

Application: **Nissan Pathfinder 2022-Present**

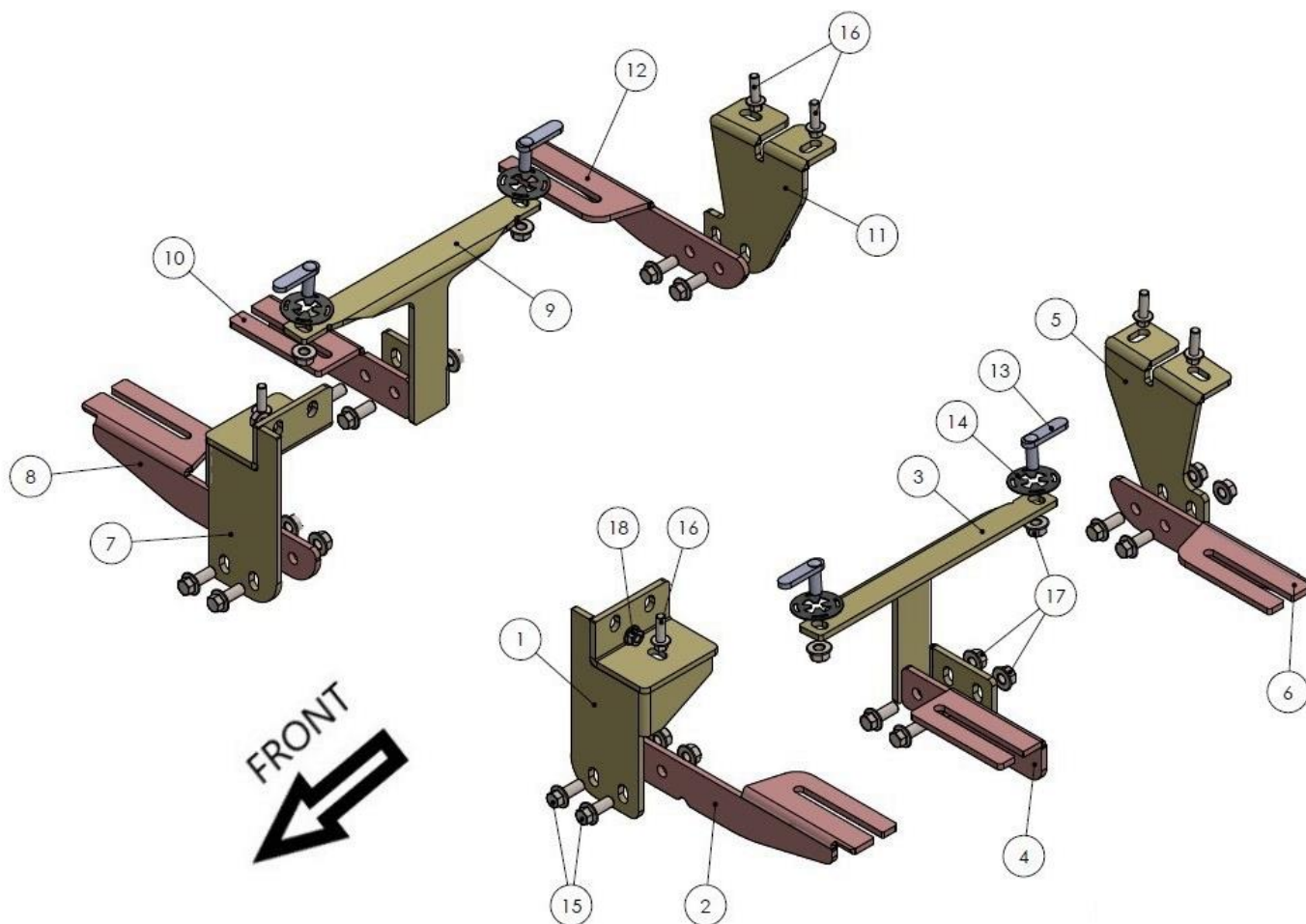
Level of Difficulty: **1 2 3 4 5**

Installation Time: 120 Min

REV 1 10/01/22

Hardware	Torque Aluminum	Torque Steel to Steel
M6 Bolt	3 ft-lbs.	14 ft-lbs.
M8 Bolt	7 ft-lbs.	35 ft-lbs.
M10 Bolt	16 ft-lbs.	64 ft-lbs.
M12 Bolt	28 ft-lbs.	112 ft-lbs.

ATTENTION: Use correct torque settings to avoid damaging the running boards and or mounting brackets. Failure to do so will void your warranty. If you have any questions, please contact our technical team at 1-866-717-6645



3240

1



DRIVER SIDE
FRONT BRACKET-1
1 x QTY

2



DRIVER SIDE
FRONT BRACKET-2
1 x QTY

3



DRIVER SIDE
CENTER BRACKET-1
1 x QTY

4



DRIVER SIDE
CENTER BRACKET-2
1 x QTY

5



DRIVER SIDE
REAR BRACKET-1
1 x QTY

6



DRIVER SIDE
REAR BRACKET-2
1 x QTY

7



PASSENGER SIDE
FRONT BRACKET-1
1 x QTY

8



PASSENGER SIDE
FRONT BRACKET-2
1 x QTY

9



PASSENGER SIDE
CENTER BRACKET-1
1 x QTY

10



PASSENGER SIDE
CENTER BRACKET-2
1 x QTY

11



PASSENGER SIDE
REAR BRACKET-1
1 x QTY

12



PASSENGER SIDE
REAR BRACKET-2
1 x QTY

HARDWARE

13



HTC 243 – M10x25 (4x12x50)
4x

14



HTC 269 – CLIPS (M10)
4x

15



M10x25 FLANGE BOLT
12x

16



M8x25 FLANGE BOLT
6x

17



M10 FLANGE NUT
16x

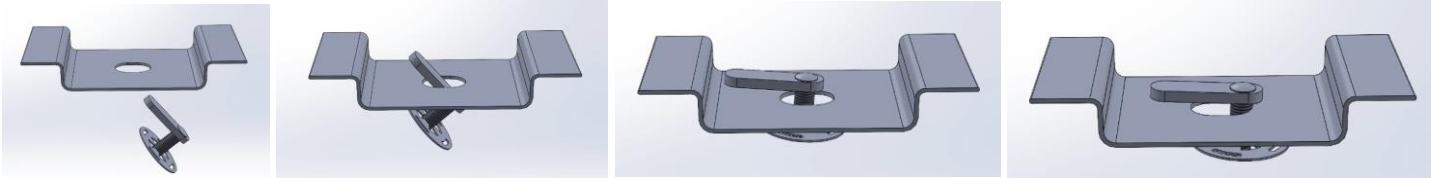
18



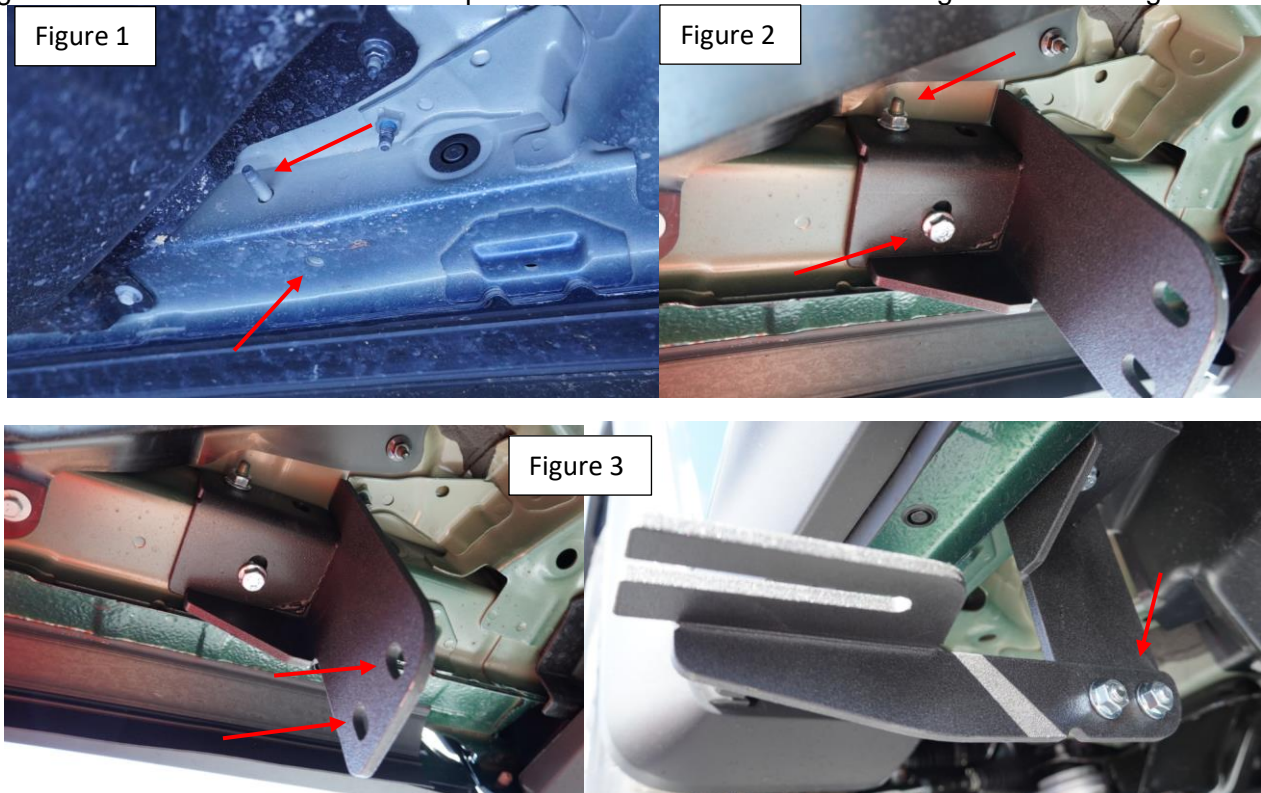
M8 FLANGE NUT
2x

Installation Instructions 3240 Bracket Kit

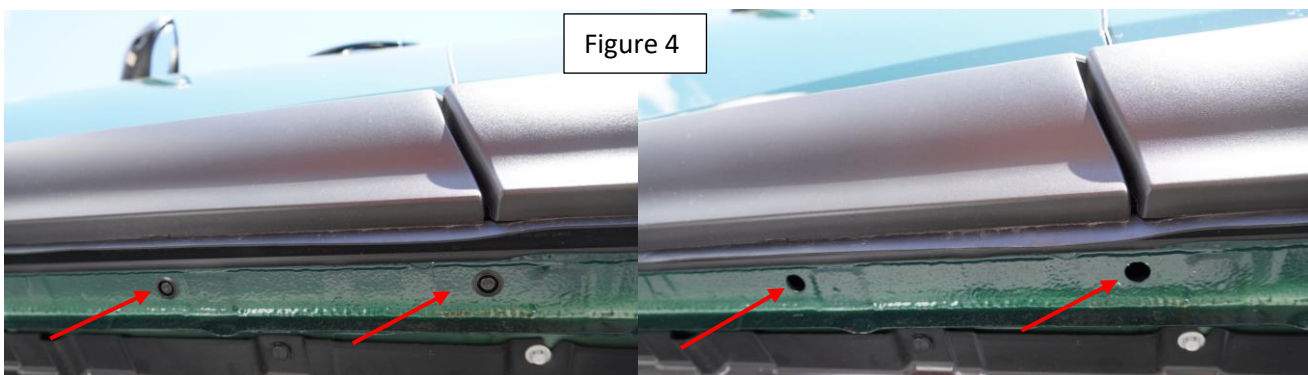
Important Install Tip: When installing Romik HTC inserts follow the sequence below. Make sure the HTC is seated correctly and do not use power tools as this will only spin the insert and possibly damage it. Test by tugging on it before installing bracket. Blue loctite is highly recommended on all metal parts.



Step 1: Locate front bracket mounting area Figure 1. Install bracket #1 using supplied M8 hardware #16 and #18 Figure 2. Install lower bracket #2 with provided M10 hardware #15 / #17 Figure 3. Do not tighten.

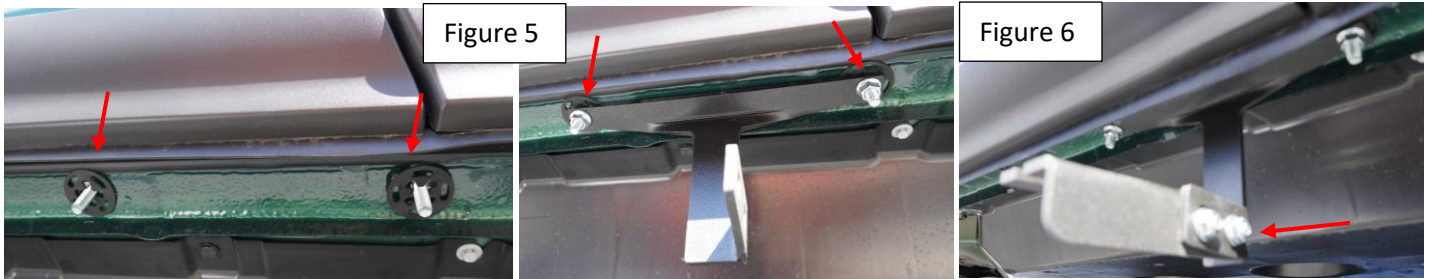


Step 2: Locate middle bracket mounting area, remove factory rubber plugs Figure 4 and discard.

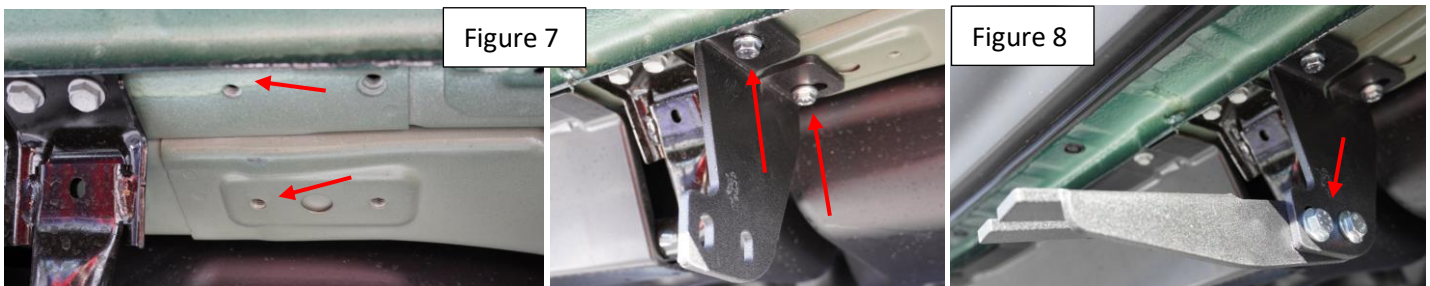


Installation Instructions 3240 Bracket Kit

Step 3: Install HTC 243 #13 and Middle bracket #3 as show on Figure 5. Install lower bracket #4 with provided M10 hardware #15 / #17 Figure 6. Do not tighten.



Step 4: Locate rear bracket mounting area, Install rear bracket #5 with supplied M8 hardware #16. Install lower bracket #6 with supplied M10 hardware #15 / #17 as shown Figure 8. Do not tighten



Step 5: Repeat process on passenger side.

Step 6: Proceed to last page of this manual for running board install instructions and torque values

For Technical support please call our team at 1-866-717-6645 and one of our experts will assist you with this installation.

Thank you for choosing Romik.

Installation Instructions Running Boards

NOTE: Use of power tools will damage the bottom of the running board and void your warranty.

Step 1: loosen the M8 hardware on back of the running boards.

Step 2: Slide running board onto brackets

Step 3: Tighten hardware to 7 ft lbs.



ROF/RPD/ROB Running boards

Step 1: Place clamping plate on top of running board as shown below.

Step 2: Install carriage bolts and plastic retaining clips as shown below.

Step 3: Install and tighten hardware to 7 ft lbs.



Product Registration and Warranty Information

- Register your Romik products at <https://romik.com/productregistration>
- Warranty information at <http://www.romik.com/warranty>

Cleaning and maintaining your Romik Running boards

Cleaning and maintaining your running boards is important, apply a light coat of a quality carnauba wax at least 2X per year. Wash often with mild soap and make sure to remove all soap residue. Many car automatic carwashes use a strong soap, make sure to use enough water to remove all residue.

For video instructions on how to clean your Romik products please click here <https://romik.com/cleaning>