



Installation Instructions

Part No. **3947**

Product: Running Boards

Application: **Toyota Tundra Double Cab 2022+**

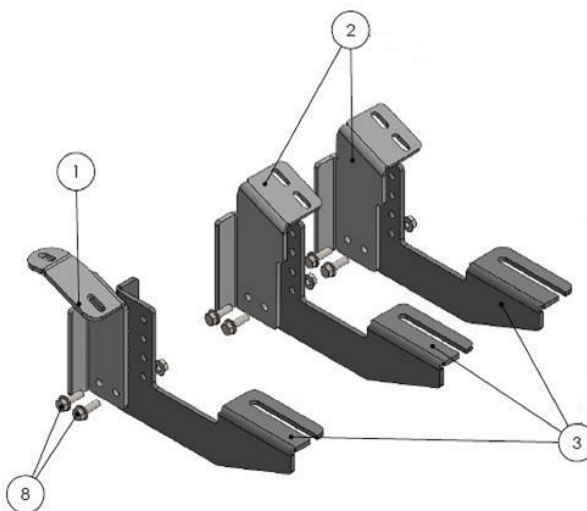
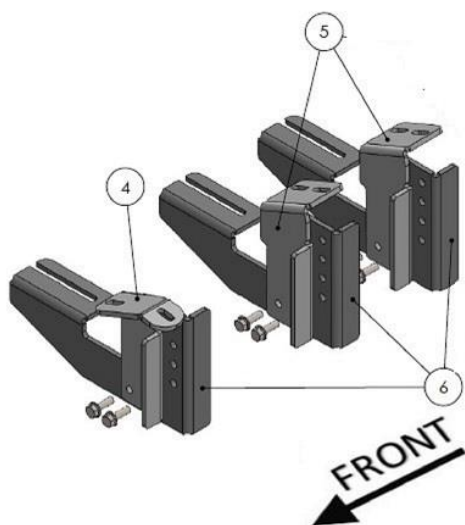
Level of Difficulty: **1** 2 3 4 5

Installation Time: 60 Min

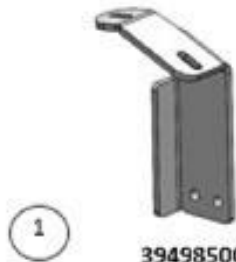
REV 1.2 05/01/22

Hardware	Torque Aluminum	Torque Steel to Steel
M6 Bolt	3 ft-lbs.	14 ft-lbs.
M8 Bolt	7 ft-lbs.	35 ft-lbs.
M10 Bolt	16 ft-lbs.	64 ft-lbs.
M12 Bolt	28 ft-lbs.	112 ft-lbs.

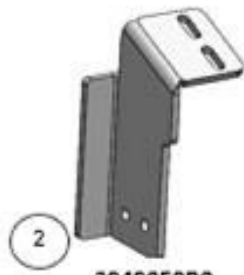
ATTENTION: Use correct torque settings to avoid damaging the running boards and or mounting brackets. Failure to do so will void your warranty. If you have any questions, please contact our technical team at 1-866-717-6645



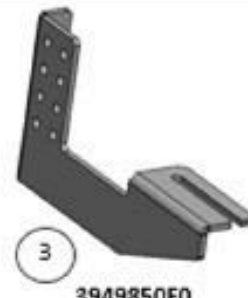
ITEM NO.	PART NUMBER	QTY.
1	3932850F0 - DRIVER FRONT	1
2	3932850C0 - DRIVER CENTER-REAR	2
3	3932850F1 - DRIVER CENTER-REAR	3
4	3932850F0 - PASSENGER FRONT	1
5	3932850C0 - PASSENGER CENTER-REAR	2
6	3932850F1 - PASSENGER CENTER-REAR	3
7	M8 - Hex Flange Nut	12
8	M8 x 25 - Heavy Hex Flange Screw	12



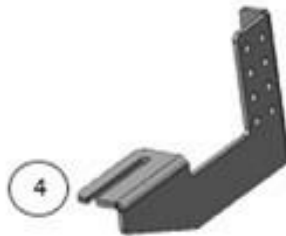
**3949850C0
DRIVER SIDE
FRONT BRACKET
1 x QTY**



**3949850B0
DRIVER SIDE
CENTER-REAR BRACKET
2 x QTY**



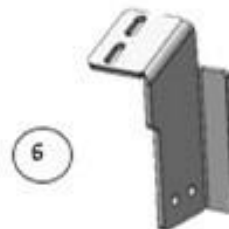
**3949850F0
DRIVER SIDE
FRONT-CENTER-REAR
BRACKET
3 x QTY**



**3949850R0
PASSENGER SIDE
FRONT-CENTER-REAR BRACKET
3 x QTY**



**3949850C0
PASSENGER SIDE
SUPPORT FRONT BRACKET
1 x QTY**



**2217850B0
PASSENGER SIDE
CENTER-REAR BRACKET
2 x QTY**

HARDWARE



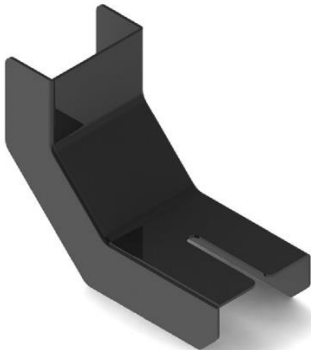
**M8 FLANGE
NUT
12 x**



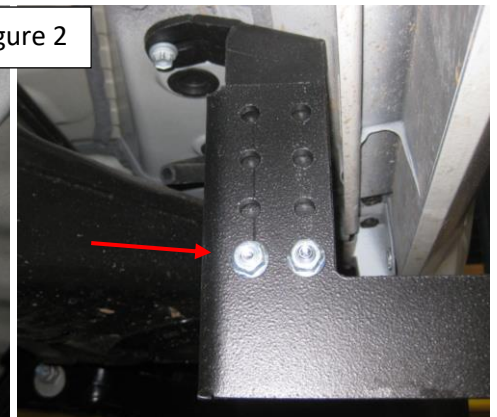
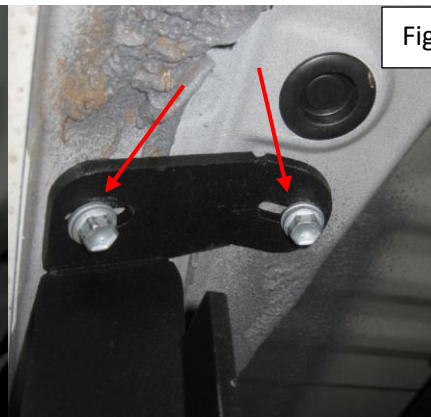
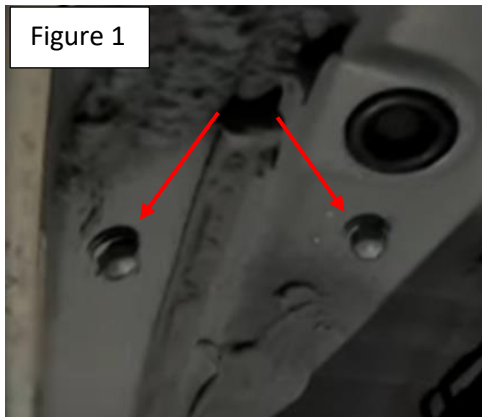
**M8x25
FLANGE BOLT
12 x**

Installation Instructions 3247 Bracket Kit

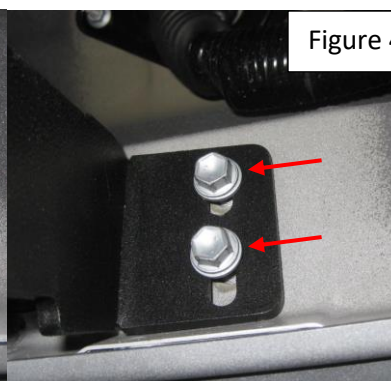
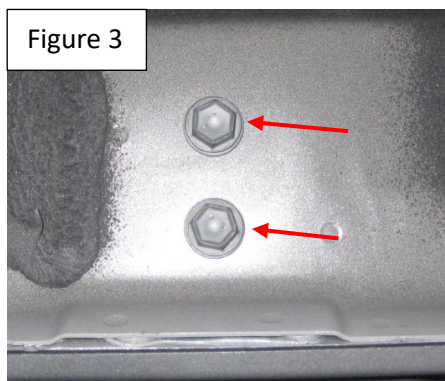
Thank you for choosing the Romik DRP System. This system allows you to adjust the brackets from 0 to 3 inch drop. If you ordered the optional DRP cover you can customize them to match the desired height by cutting on the lines inside the cover. Please test before cutting, in many cases you will be able to tuck the cover behind the body of the vehicle without cutting. **Blue Loctite is recommended**



Step 1: Locate front mounting points Figure 1, remove factory bolts and keep them as they will be reused to install the bracket. Assemble DRP bracket and set to desired height. Attach to vehicle do not tighten figure 2.



Step 2: Locate the remaining 2 mounting points and remove factory bolts Figure 3. Assemble DRP bracket and set to desired height. Attach to vehicle do not tighten Figure 4.



Step 3: Please note steel to steel torque figures are listed on the first page. Torque brackets 35 to 50 ft lbs. Install DRP covers on brackets and proceed to last page of this manual for running board install instructions and torque values. Use of a level is recommended.

For Technical support please call our team at 1-866-717-6645 and one of our experts will assist you with this installation.

Thank you for choosing Romik.

Installation Instructions Running Boards

NOTE: Use of power tools will damage the bottom of the running board and void your warranty.

Step 1: loosen the M8 hardware on back of the running boards.

Step 2: Slide running board onto brackets

Step 3: Tighten hardware to 7 ft lbs.



ROF/RPD/ROB Running boards

Step 1: Place clamping plate on top of running board as shown below.

Step 2: Install carriage bolts and plastic retaining clips as shown below.

Step 3: Install and tighten hardware to 7 ft lbs.



Product Registration and Warranty Information

- Register your Romik products at <https://romik.com/productregistration>
- Warranty information at <http://www.romik.com/warranty>

Cleaning and maintaining your Romik Running boards

Cleaning and maintaining your running boards is important, apply a light coat of a quality carnauba wax at least 2X per year. Wash often with mild soap and make sure to remove all soap residue. Many car automatic carwashes use a strong soap, make sure to use enough water to remove all residue.

For video instructions on how to clean your Romik products please click here <https://romik.com/cleaning>