



## Installation Instructions

REV 2 04/15/20

Part No. **4033**

Product: Running Boards

Application:

**VW Tiguan 2018+**

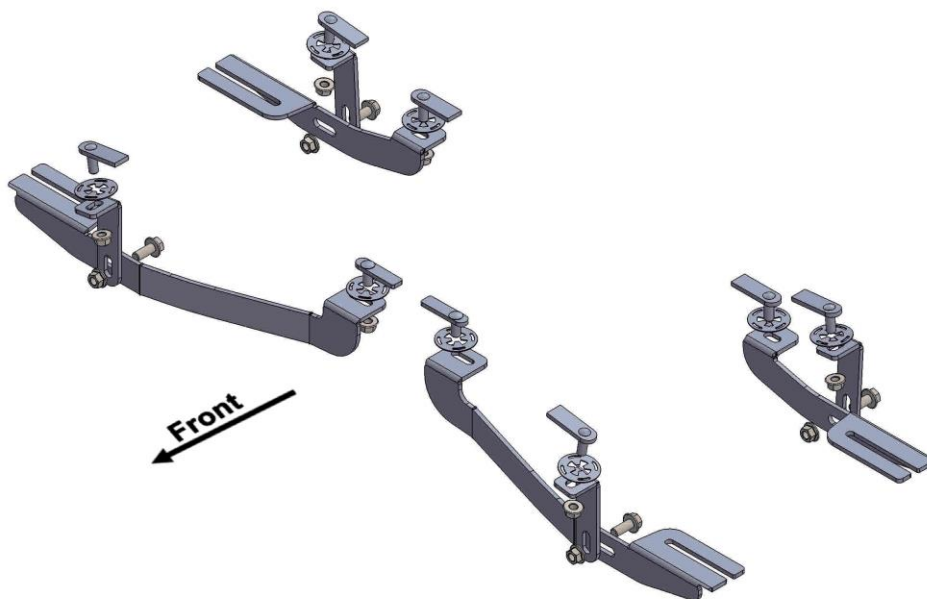
Level of Difficulty: 1 2 **3** 4 5

Installation Time: 90 min

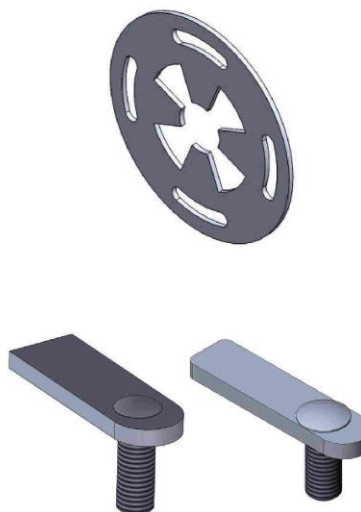
Hardware	Torque Specifications
M6 Bolt	3 ft-lbs.
M8 Bolt	7 ft-lbs.
M10 Bolt	16 ft-lbs.
M12 Bolt	28 ft-lbs.

**ATTENTION:** Use correct torque settings to avoid damaging the running boards and or mounting brackets. Failure to do so will void your warranty.

If you have any questions please contact our technical team at 1-866-717-6645



ITEM/NO	PART NUMBER	QTY
1	4033850F0 DRIVER	1
2	4033850F1 DRIVER	1
3	4033850B0 DRIVER	1
4	HTC 269 - CLIPS (M10)	8
5	HTC 232 - M10x20 (5X15X60)	2
6	HTC 230 - M10x25(5x20x60)	6
7	DIN 6921 FLANGE BOLT - M10 x 25	4
8	DIN 6923 FLANGE NUT - M10	12
9	4033850B1 DRIVER	1
10	4033850F0 PASSENGER	1
11	4033850B0 PASSENGER	1
12	4033850F1 PASSENGER	1
13	4033850B1 PASSENGER	1



# Installation Instructions 4033 Bracket Kit

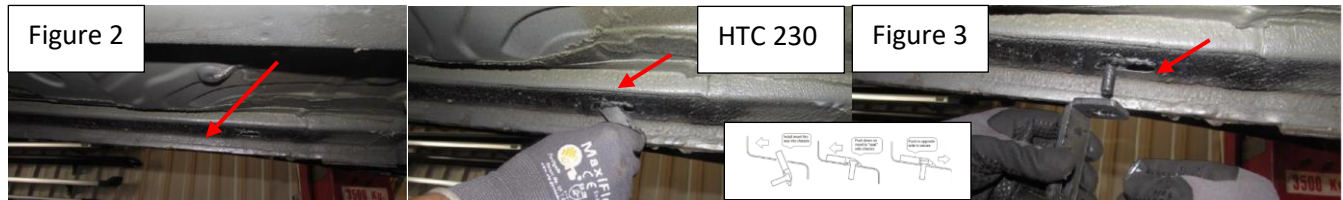
**NOTE:** This vehicle requires plastic undercarriage panel trimming.

**Step 1:** Remove plastic undercarriage panels. Save hardware as it will be reused

**Step 2:** Locate front mounting locations and hardware as per 1<sup>st</sup> page of this installation manual, Install provided HTC 232 as shown on Figure 1



**Step 3:** Locate extra support mounting area, if the area is covered with tape, remove and discard. If the area has a rubber plug remove and discard. Install provided HTC 230 as shown Figure 2. Install extra support as shown Figure 3 do not tighten.



**Step 4:** Install front bracket as shown on Figure 4. Attach front bracket to extra support using supplied M10 hardware Figure 5 do not tighten.



# Installation Instructions 4033 Bracket Kit

**Step 5:** Locate rear area extra support mounting points, if the area is covered with tape, remove and discard. If the area has a rubber plug remove and discard. Install provided HTC 230 as shown Figure 6. Install extra support as shown Figure 7 do not tighten.

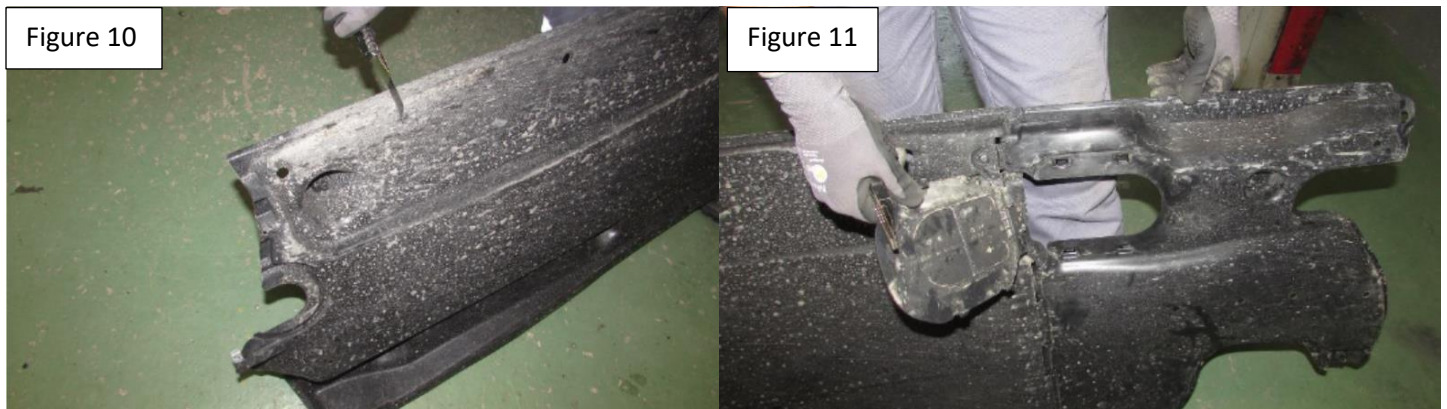


**Step 6:** Install rear bracket as shown on Figure 8. Attach rear bracket to extra support using supplied M10 hardware Figure 9 do not tighten.



**Step 7:** Proceed to last page of this manual for running board install instructions and torque values

**Step 8:** After installing both running boards, lift plastic panels and scribe area that makes contact with brackets. Using a utility knife proceed to make cuts to expose brackets. Install panels back on.

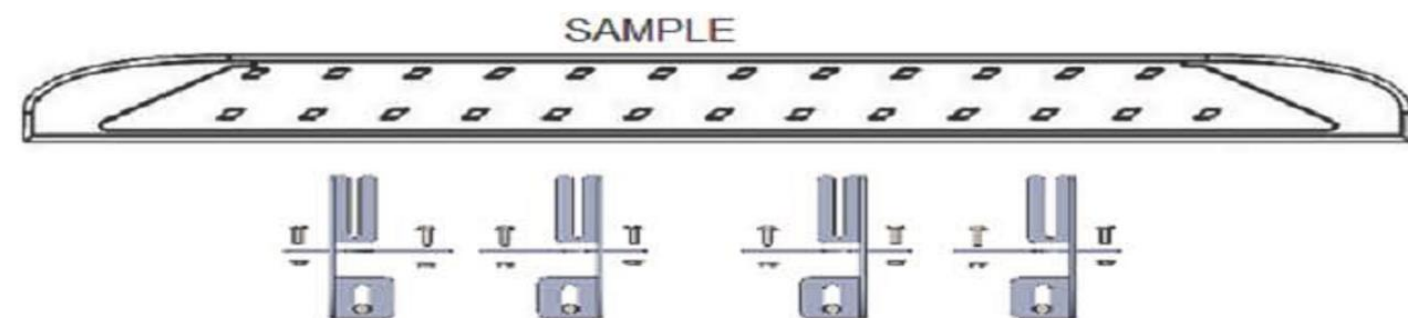


For Technical support please call our team at 1-866-717-6645 and one of our experts will assist you with this installation.

**Thank you for choosing Romik**



# Running Board Installation Instructions



**RAL / RB2 / REC / RCV / RZR**



**ROB / ROF / RPD**

- 1) Flip your Romik running boards onto a flat surface, make sure to place the running boards on a towel or cardboard in order to protect the surface Figure 1.
- 2) Loosen the M8 bolts on back of your running boards Figure 2. Depending on your model there will be either 6 or 8 bolts installed per side.
- 3) Once your brackets have been installed, place the running board onto the brackets as shown on Figure 3.
- 4) Adjust running boards, centering on vehicle. Hand tight M8 hardware on running boards.
- 5) Follow the torque procedures, torque M8 hardware to **7 ft-lbs** using a torque wrench.
- 6) Cleaning and maintaining your running boards is important, apply a light coat of a quality carnauba wax at least 2X per year. Wash often with mild soap and make sure to remove all soap residue. Many car automatic carwashes use a strong soap, make sure to use enough water to remove all residue.
- 7) Register your products at [www.Romik.com/contact/productregistration](http://www.Romik.com/contact/productregistration)
- 8) Warranty information at [www.Romik.com/warranty](http://www.Romik.com/warranty)