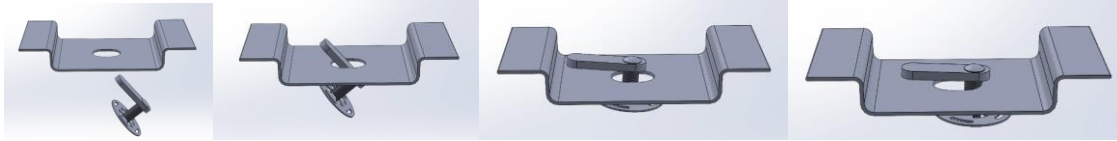


Installation Instructions 2819 V2 Bracket Kit

Important Install Tip: When installing Romik HTC inserts follow the sequence below. Make sure the HTC is seated correctly and do not use power tools as this will only spin the insert and possibly damage it. Test by tugging on it before installing bracket. Blue loctite is highly recommended.



NOTE: Minor trimming is optional. Brackets can be installed without trimming; however, they will be more difficult to maneuver in place. Please read below and follow instructions. Cut a 5 x 7-inch section on the felt material as shown below. You must expose the mounting points indicated by the red arrow. **ATTENTION** do not remove panels; this procedure must be done with panels installed.

Step 1: Locate front mounting locations as shown on Figure 1. Note red arrow points towards the front of the vehicle. Install provided HTC 328 as shown Figure 2

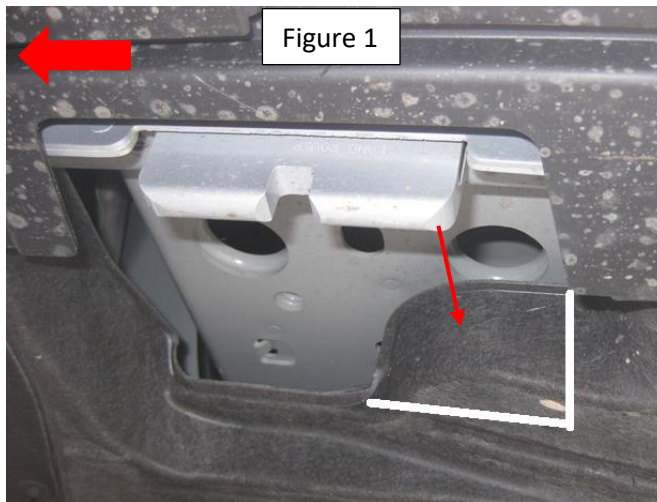


Figure 1

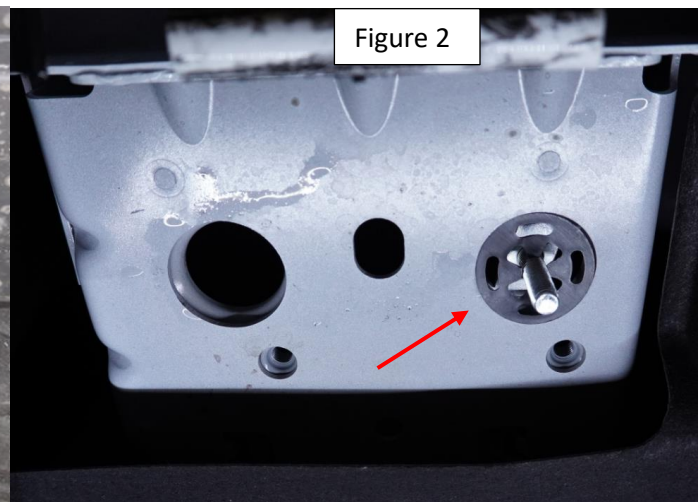


Figure 2

Step 2: Install front bracket using supplied M10 bolt and HTC 328 as shown on Figure 3 Note: Some vehicles may require chasing the threads to remove extra paint or dirt before installing 10mm bolt. Do not fully tighten.

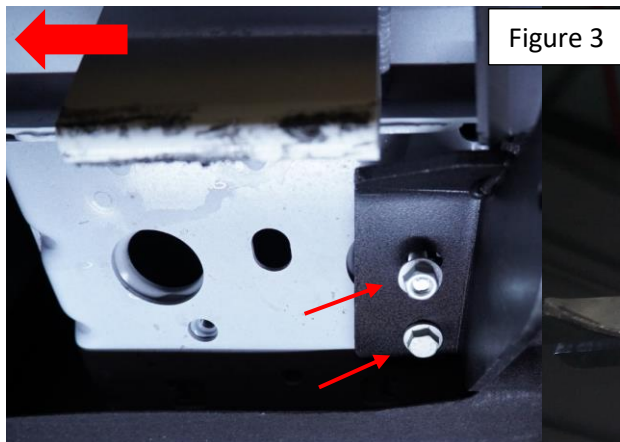
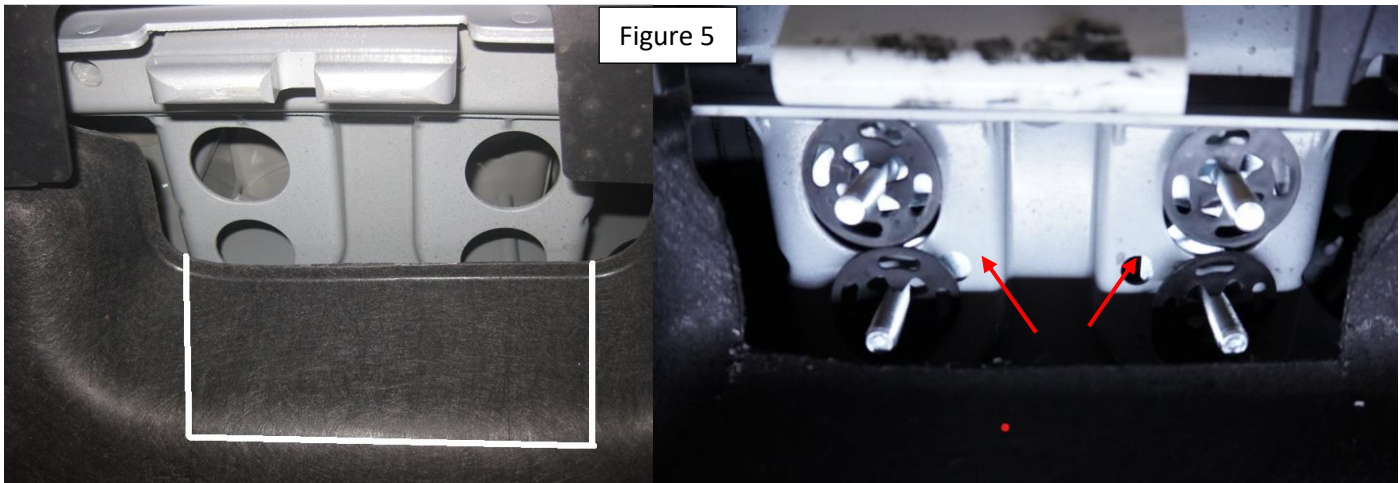


Figure 3

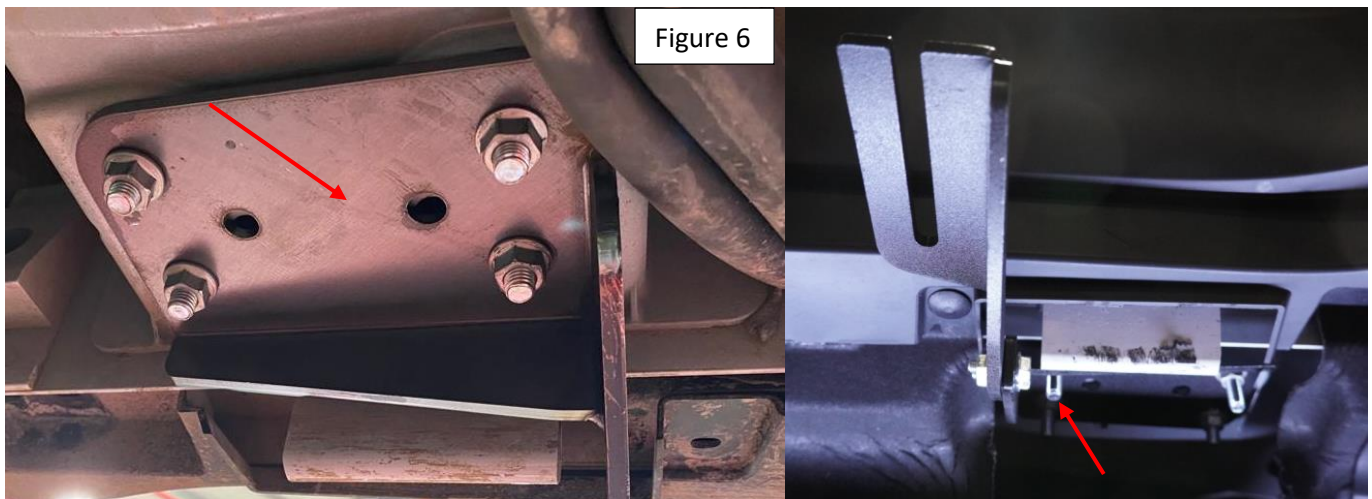


Installation Instructions 2819 V2 Bracket Kit

Step 3: This step must be done after trimming felt panels. Install provided all 4 HTC 326 as shown Figure 5.



Step 4: Install rear bracket as shown Figure 6. Do not fully tighten.



Step 6: Proceed to last page of this manual for running board install instructions and torque values Max torque is 7 ft lbs. Do not overtighten as this may damage the running boards.

For Technical support please call our team at 1-866-717-6645 and one of our experts will assist you with this installation.

Thank you for choosing Romik.