



## Installation Instructions

Part No. **1432**

Product: Running Boards

Application:

**Chevy Silverado Crew Cab 2019+**

**GMC Sierra Crew Cab 2019+**

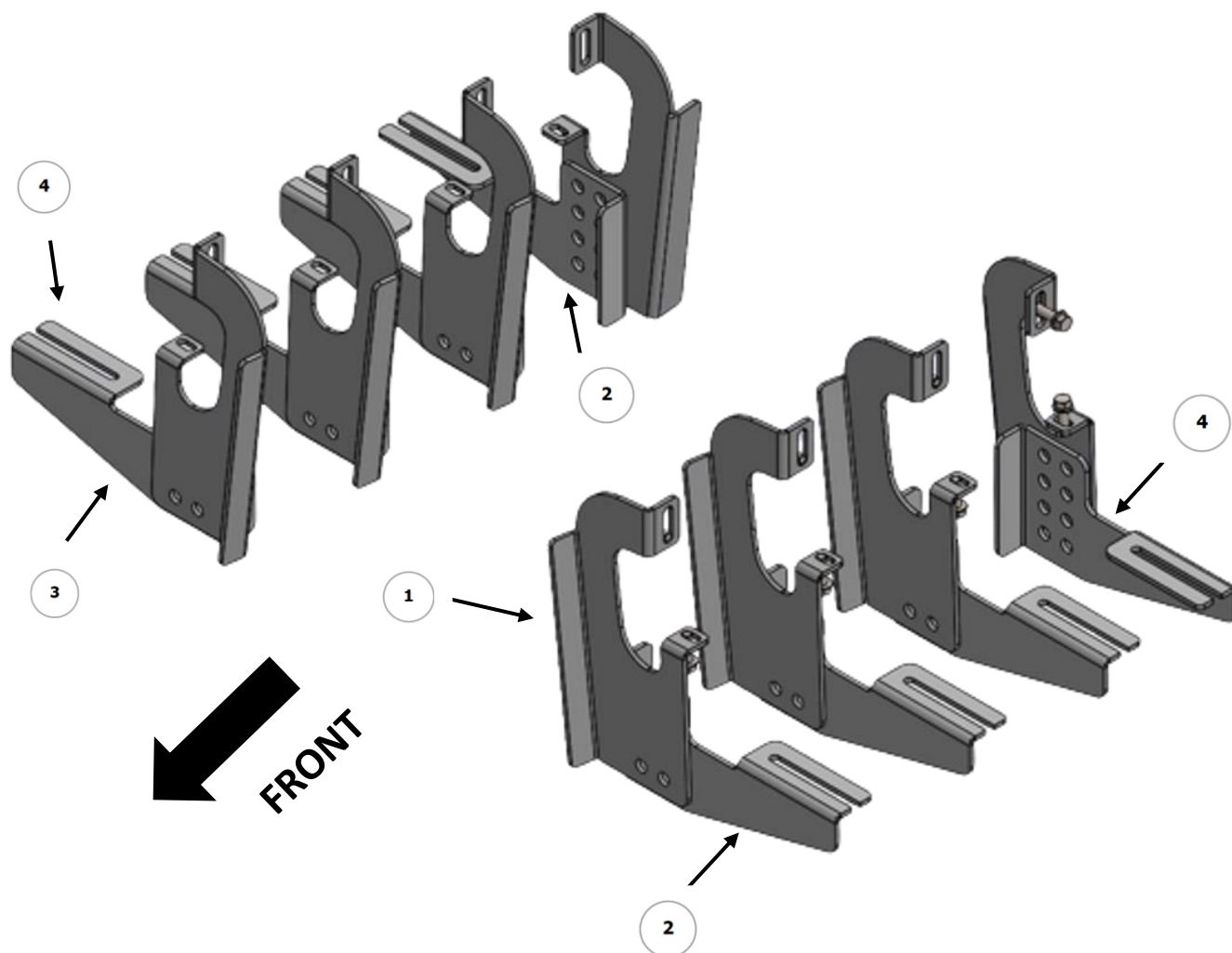
Level of Difficulty: **1** 2 3 4 5

Installation Time: 60 Min.

REV 2 12/01/22

Hardware	Torque Aluminum	Torque Steel to Steel
M6 Bolt	3 ft-lbs.	14 ft-lbs.
M8 Bolt	7 ft-lbs.	35 ft-lbs.
M10 Bolt	16 ft-lbs.	64 ft-lbs.
M12 Bolt	28 ft-lbs.	112 ft-lbs.

**ATTENTION:** Use correct torque settings to avoid damaging the running boards and or mounting brackets. Failure to do so will void your warranty. If you have any questions, please contact our technical team at 1-866-717-6645



## 1432 "DRP"

1



DRIVER SIDE  
FRONT-1\_CENTER-1\_REAR-1 BRACKET  
4 x QTY

2



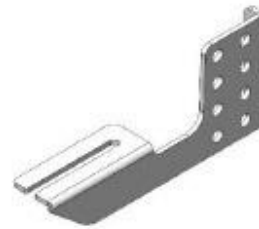
DRIVER SIDE  
FRONT-2\_CENTER-2\_REAR-2 BRACKET  
4 x QTY

3



PASSENGER SIDE  
FRONT-1\_CENTER-1\_REAR-1 BRACKET  
4 x QTY

4



PASSENGER SIDE  
FRONT-2\_CENTER-2\_REAR-2 BRACKET  
4 x QTY

### HARDWARE

5



M10x25 FLANGE BOLT  
16x

6



M8x25 FLANGE BOLT  
16x

7



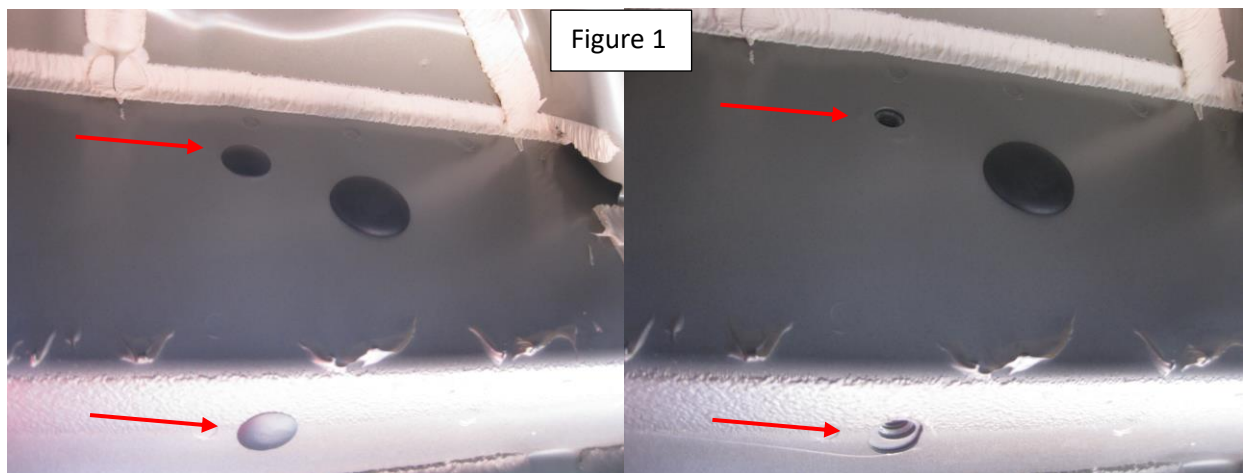
M10 FLANGE NUT  
16x

# Installation Instructions 1432 “DRP” Bracket Kit

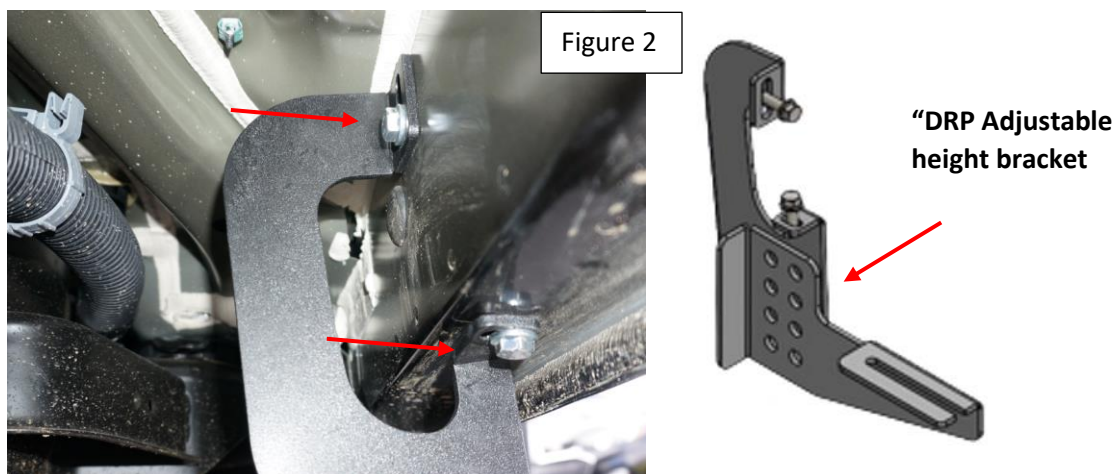
Thank you for choosing the Romik DRP System. This system allows you to adjust the brackets from 0 to 3-inch drop. If you ordered the **optional** DRP cover you can customize them to match the desired height by cutting on the lines inside the cover. Please test before cutting, in many cases you will be able to tuck the cover behind the body of the vehicle without cutting. NOTE: **Blue Loctite is recommended on all metal parts**



**Step 1:** Locate all 4 mounting points, Remove factory rubber plugs and dispose. Figure 1.



**Step 2:** Assemble “DRP” Brackets to desired height. Install using supplied M8 hardware Figure 2. Do not tighten



# Installation Instructions 1432 “DRP” Bracket Kit

---

**Step 3:** Install DRP covers on brackets. Torque M8 bolts to 35 ft-lbs. Torque M10 bolts to 64 ft-lbs proceed to last page of this manual for running board install instructions and torque values. Use of a level is recommended.

**NOTE:** DRP system is designed to assist you getting in and out of the vehicle. However the lower you place the brackets the lower the weight rating. For maximum weight capacity use DRP brackets at zero.

**If installing ROB / ROF / RPD running boards make sure “clamping” plates are properly installed on running boards.**

For Technical support please call our team at 1-866-717-6645 and one of our experts will assist you with this installation.

**Thank you for choosing Romik.**

# Installation Instructions Running Boards

**NOTE: Use of power tools will damage the bottom of the running board and void your warranty.**

**Step 1: loosen the M8 hardware on back of the running boards.**

**Step 2: Slide running board onto brackets**

**Step 3: Tighten hardware to 7 ft lbs.**

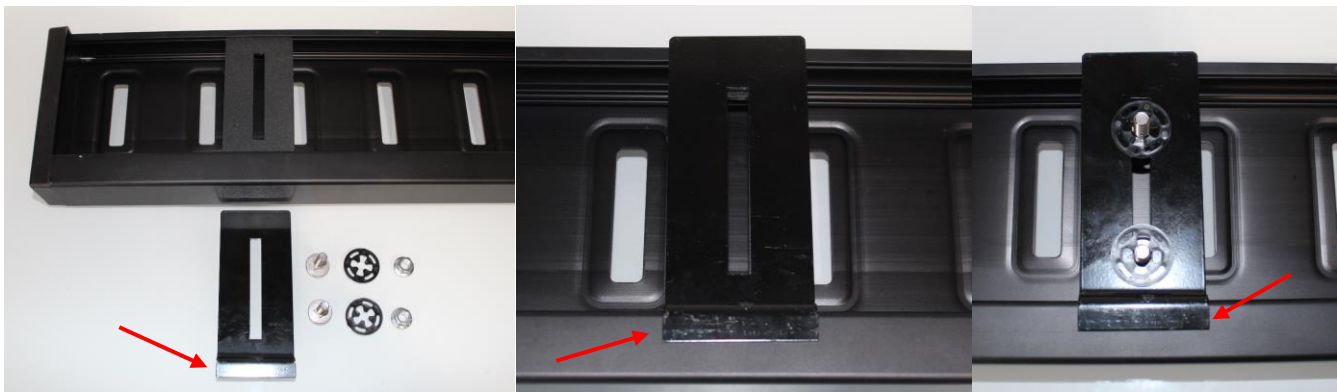


## ROF/RPD/ROB Running boards

**Step 1: Place clamping plate on top of running board as shown below. Make sure clamping plate sits correctly on running board surface.**

**Step 2: Install carriage bolts and plastic retaining clips as shown below.**

**Step 3: Install and tighten hardware to 7 ft lbs.**



## Product Registration and Warranty Information

- Register your Romik products at <https://romik.com/productregistration>
- Warranty information at <http://www.romik.com/warranty>

## Cleaning and maintaining your Romik Running boards

Cleaning and maintaining your running boards is important, apply a light coat of a quality carnauba wax at least 2X per year. Wash often with mild soap and make sure to remove all soap residue. Many car automatic carwashes use a strong soap, make sure to use enough water to remove all residue.

For video instructions on how to clean your Romik products please click here <https://romik.com/cleaning>